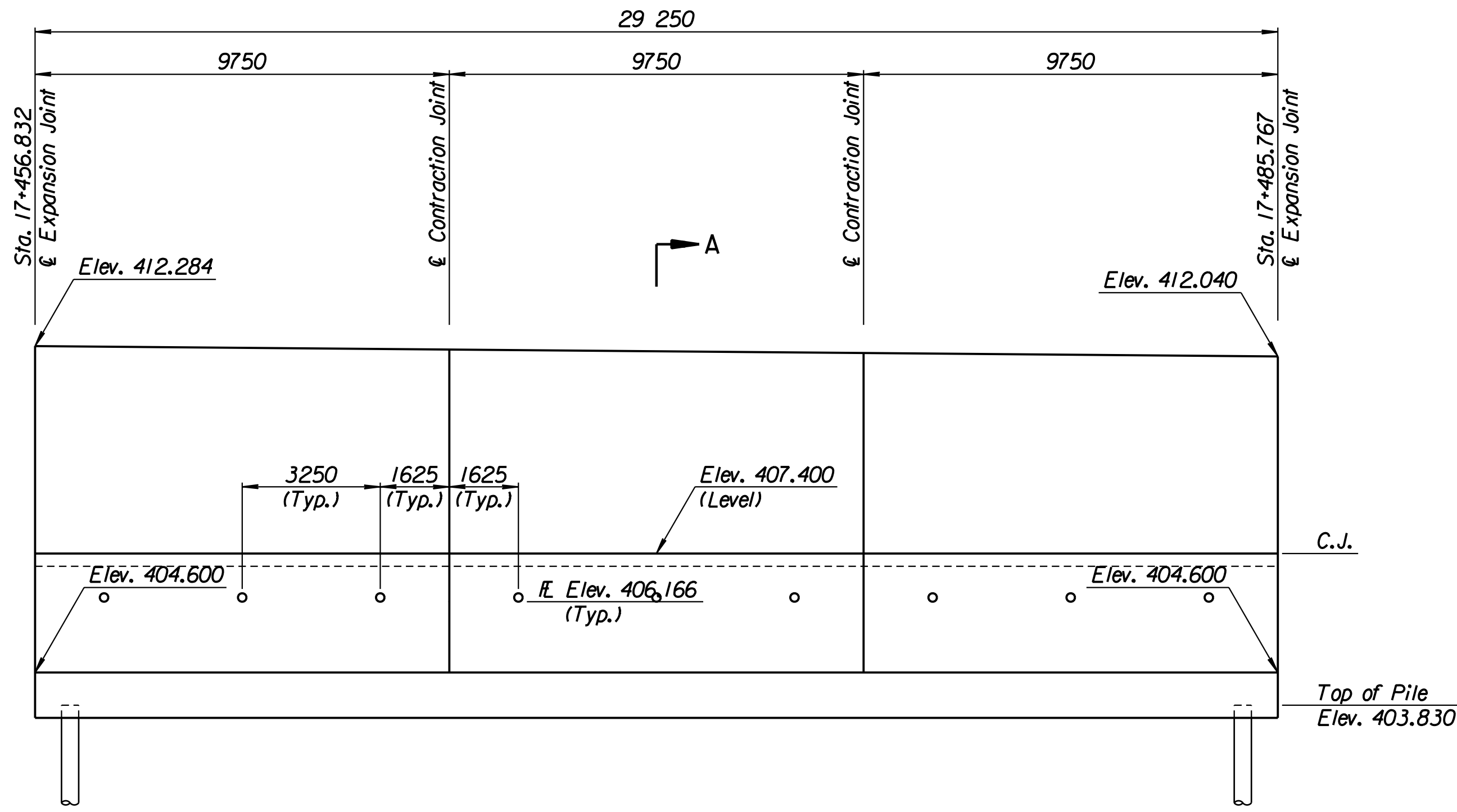


STATE	PROJECT NO.	YEAR	SHEET NO.	TOTAL SHEETS
KANSAS	54-87 K-6657-01	2002	330	1122

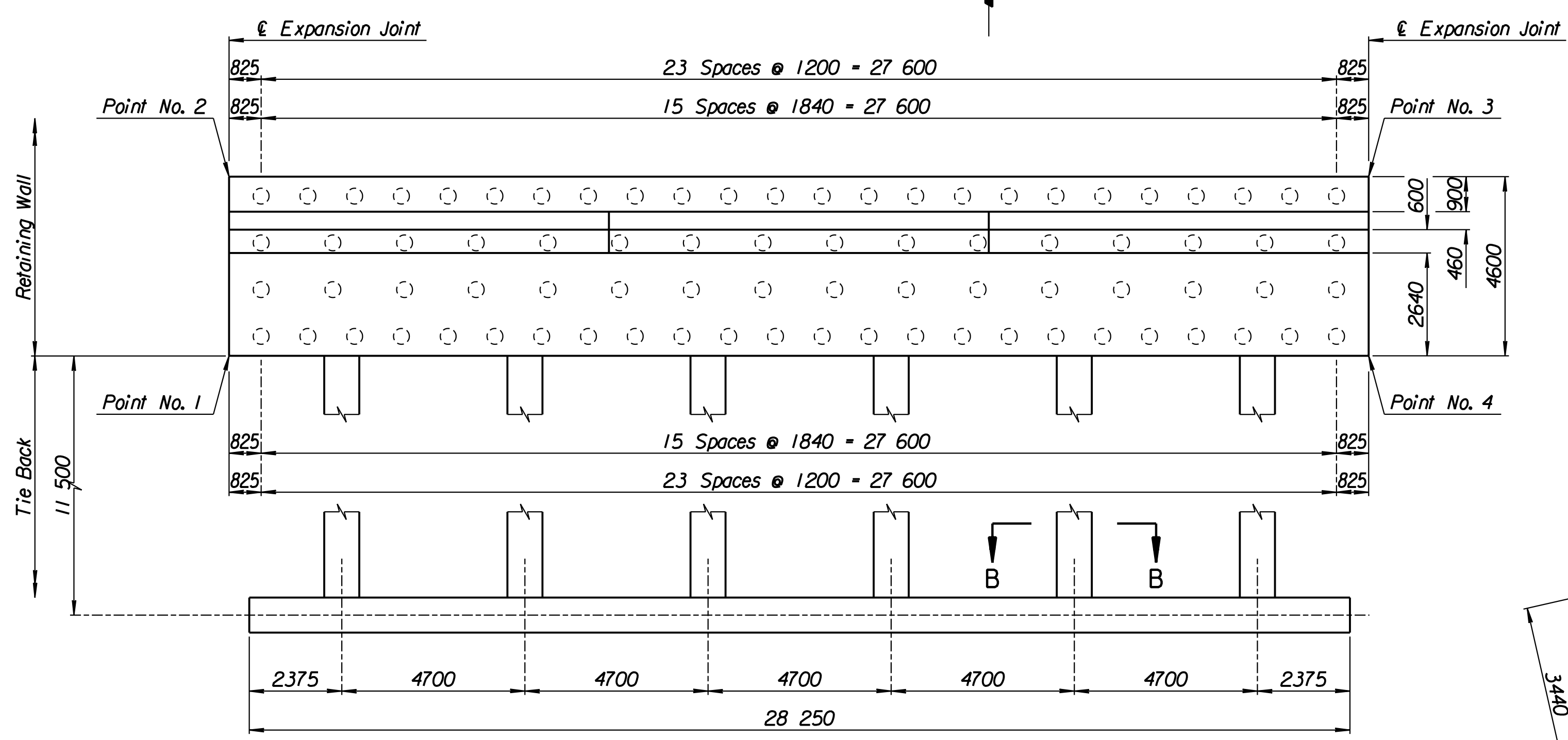
LAYOUT INFORMATION				
Point No.	North Coordinate	East Coordinate	Station	Offset
1	512070.572	493318.674	17+456.832	14.795 Lt.
2	512074.744	493316.736	17+456.832	19.395 Lt.
3	512086.872	493343.369	17+485.767	19.395 Lt.
4	512082.668	493345.235	17+485.767	14.795 Lt.

REINFORCING STEEL							
Straight Bars				Bent Bars			
Mark	Size	Number	Length	Mark	Size	Number	Length
C6-1	*25	342	4520	C6-3	*29	195	3940
C6-2	*25	60	15 540	C6-4	*19	195	2620
C6-6	*29	195	4890	C6-5	*29	195	2500
C6-7	*13	99	3650	C6-9	*19	99	1350
C6-8	*16	150	9650				
C6-10	*19	99	4490				
C6-11	*13	99	4590				
C6-12	*29	72	4000				

WALL QUANTITIES		
Item	Quantity	Unit
Pressure Grouted Pile (406 mm)	960.0	m
Concrete (Grade 30)(AE)	267.4	m ³
Reinforcing Steel (Grade 420)	27 974	kg
Class III Excavation	292.2	m ³



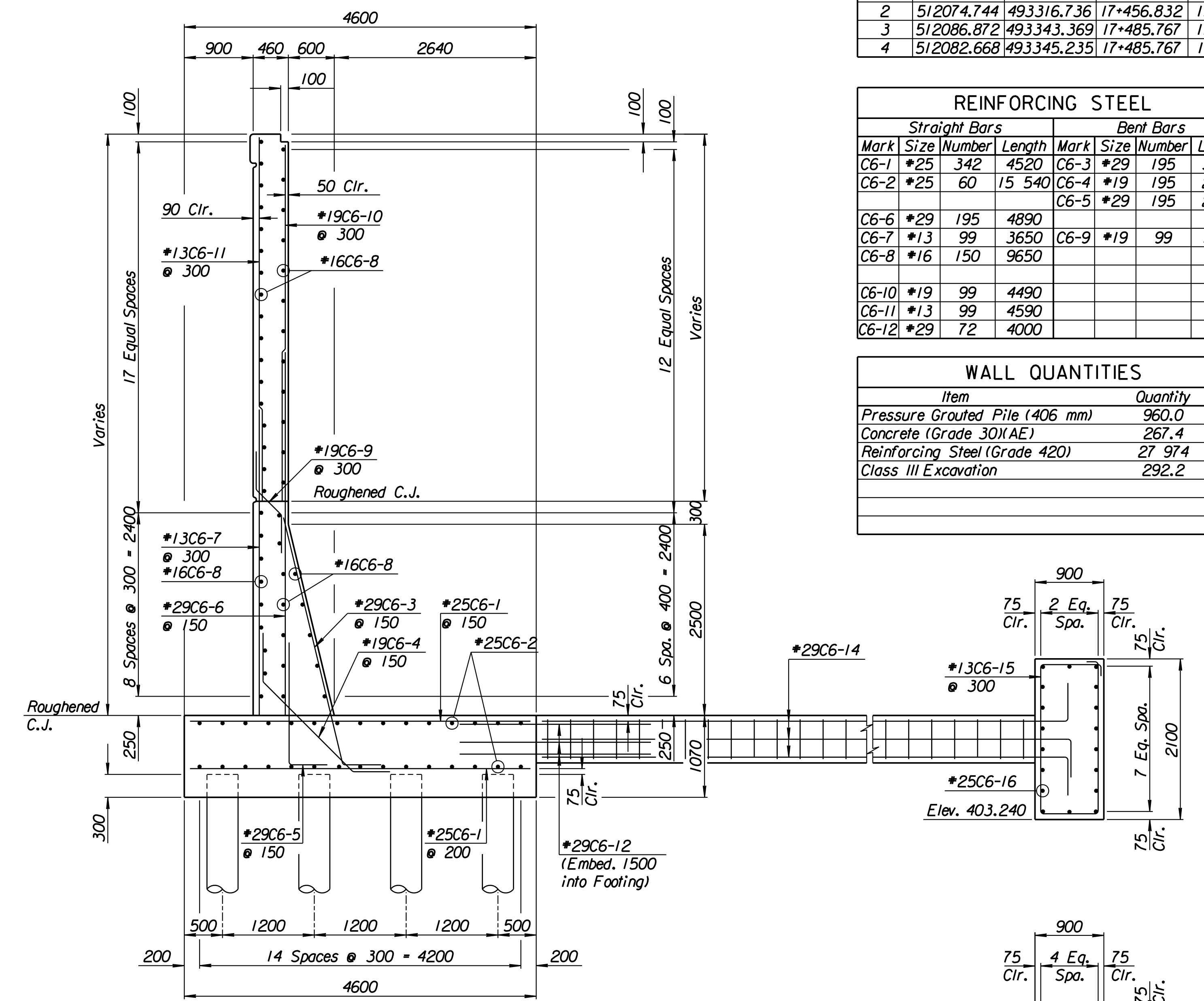
ELEVATION



PLAN

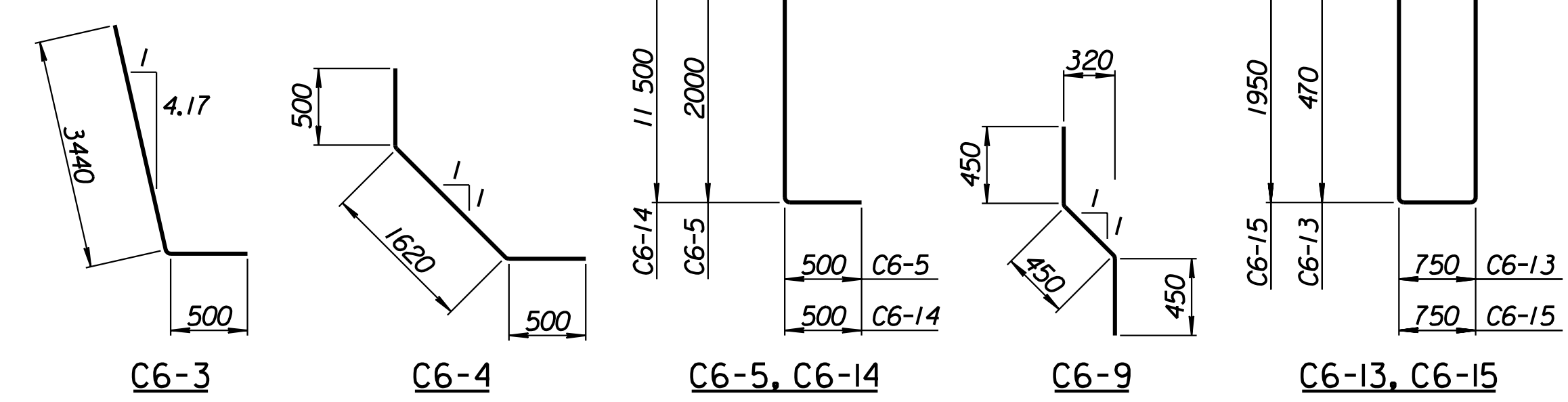
TIE BACK REINFORCING STEEL							
Straight Bars				Bent Bars			
Mark	Size	Number	Length	Mark	Size	Number	Length
C6-16	*25	36	15 040	C6-13	*13	222	2740
				C6-14	*29	72	12 000
				C6-15	*13	94	5700

TIE BACK QUANTITIES		
Item	Quantity	Unit
Concrete (Grade 30)(AE)	90.4	m ³
Reinforcing Steel (Grade 420)	7660	kg



SECTION A-A

SECTION B-B



BENDING DIAGRAMS
All dimensions are out to out of bars.

RECORD DRAWING

1			
No.	Revisions	By	Date
CITY OF WICHITA			
TYLER NORTHEAST WALL			
STA. 17+456.832 TO STA. 17+485.767			
SEDGWICK COUNTY			
 Professional Engineering Consultants, P.A. 303 S. TOPEKA • WICHITA, KANSAS 67202 316-262-2691 • FAX 316-262-3003			
Designed by	P.D.F.	Checked by	R.A.S.
Drawn by	W.L.L.	Date	April 11, 2002
		Job No.	97362

Drawn by: wil
 Plotted by: drp
 4-11-2002
 I:\1997\97362\As-Built\tdgn\Vol 2\Sh 330-Tyler-NEWall-3.dgn Last Rev: 8-23-07 By: gdr