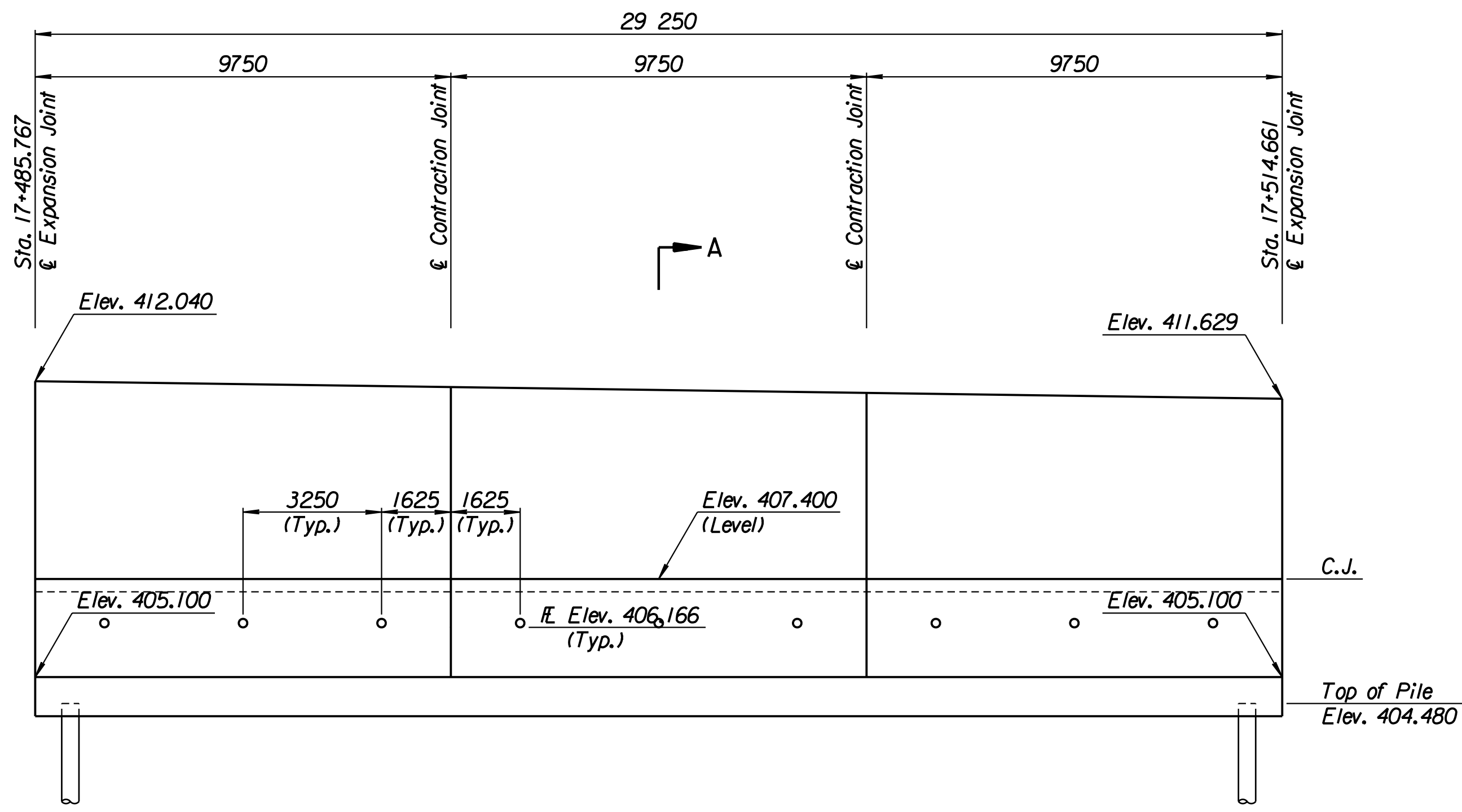


STATE	PROJECT NO.	YEAR	SHEET NO.	TOTAL SHEETS
KANSAS	54-87 K-6657-01	2002	331	1122

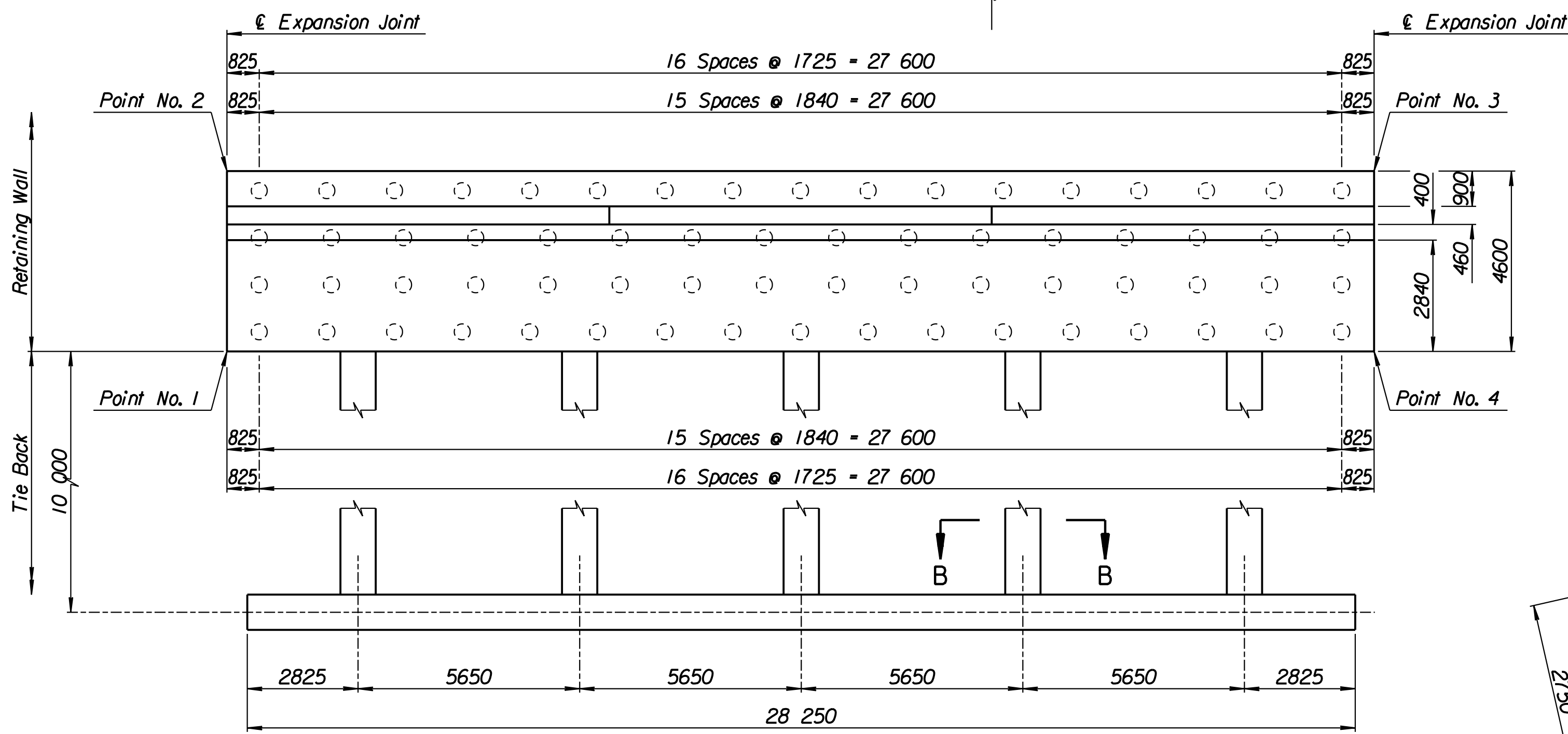
LAYOUT INFORMATION				
Point No.	North Coordinate	East Coordinate	Station	Offset
1	512082.668	493345.235	17+485.767	14.795 Lt.
2	512086.872	493343.369	17+485.767	19.395 Lt.
3	512098.490	493370.231	17+514.661	19.395 Lt.
4	512094.250	493372.017	17+514.661	14.795 Lt.

REINFORCING STEEL							
Straight Bars				Bent Bars			
Mark	Size	Number	Length	Mark	Size	Number	Length
D6-1	*25	294	4520	D6-3	*29	195	3250
D6-2	*25	60	15 540	D6-4	*19	195	2320
D6-6	*29	195	4560	D6-5	*29	195	2300
D6-7	*13	99	3320	D6-9	*19	99	1350
D6-8	*16	138	9650				
D6-10	*19	99	4080				
D6-11	*13	99	4180				
D6-12	*29	60	4000				

WALL QUANTITIES		
Item	Quantity	Unit
Pressure Grouted Pile (406 mm)	792.0	m
Concrete (Grade 30)(AE)	225.8	m ³
Reinforcing Steel (Grade 420)	25 191	kg
Class III Excavation	184.9	m ³



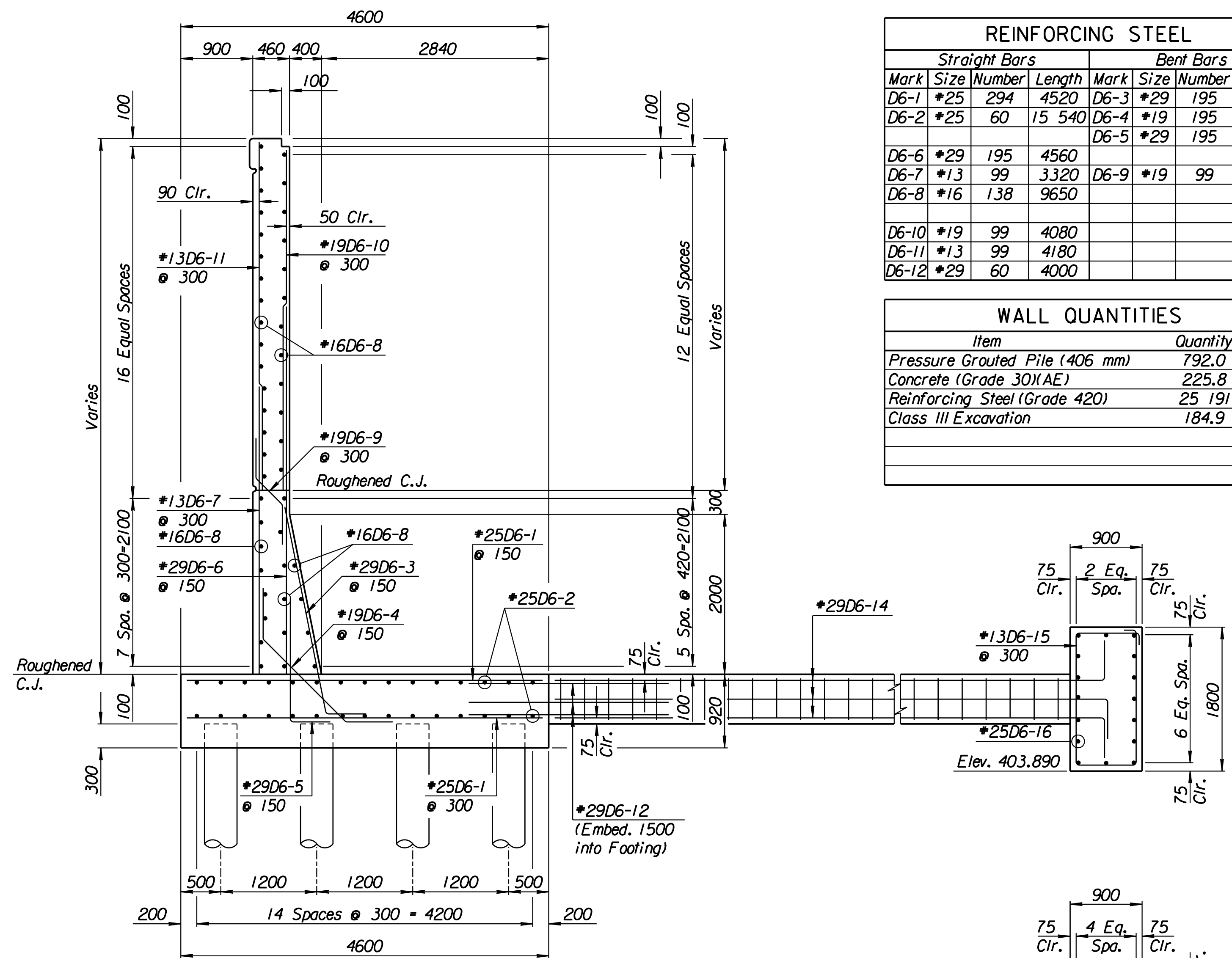
ELEVATION



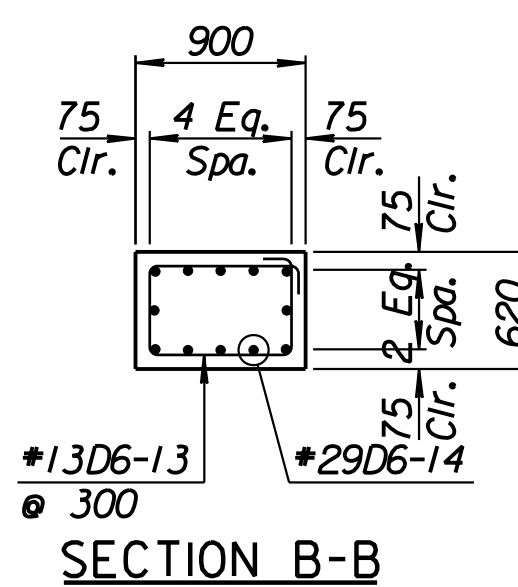
PLAN

TIE BACK REINFORCING STEEL							
Straight Bars			Bent Bars				
Mark	Size	Number	Length	Mark	Size	Number	Length
D6-16	*25	32	15 040	D6-13	*13	160	2740
				D6-14	*29	60	10 500
				D6-15	*13	94	5100

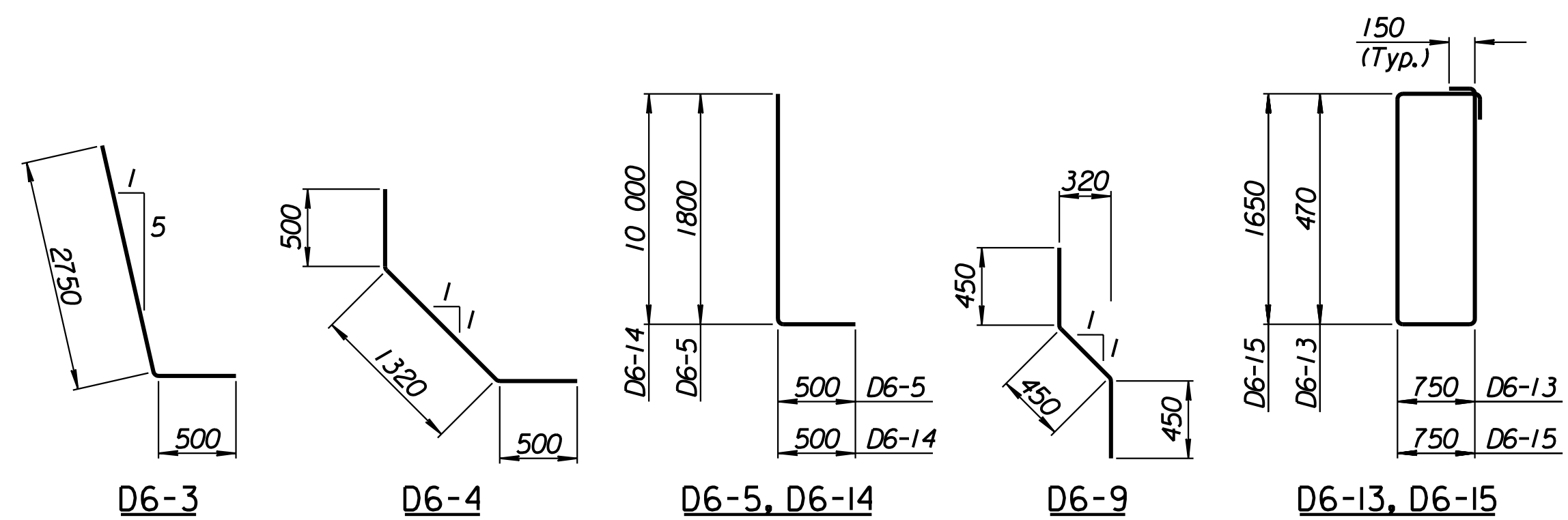
TIE BACK QUANTITIES		
Item	Quantity	Unit
Concrete (Grade 30)(AE)	72.4	m ³
Reinforcing Steel (Grade 420)	6012	kg



SECTION A-A



SECTION B-B



BENDING DIAGRAMS

All dimensions are out to out of bars.

RECORD DRAWING

No.	Revisions	By	Date

CITY OF WICHITA
TYLER NORTHEAST WALL
 STA. 17+485.767 TO STA. 17+514.661
 SEDGWICK COUNTY

Professional Engineering Consultants, P.A.
 303 S. TOPEKA • WICHITA, KANSAS 67202
 316-262-2691 • FAX 316-262-3003

Designed by	P.D.F.	Checked by	R.A.S.
Drawn by	W.L.L.	Date	April, 2002
		Job No.	97362

Drawn by: wil
 Plotted by: drp
 4-11-2002
 I:/1997/97362/As-Built/s/dgn/s/Vol 2/Sh 331-Tyler-NEWall-4.dgn Last Rev: B-23-07 By: gdr