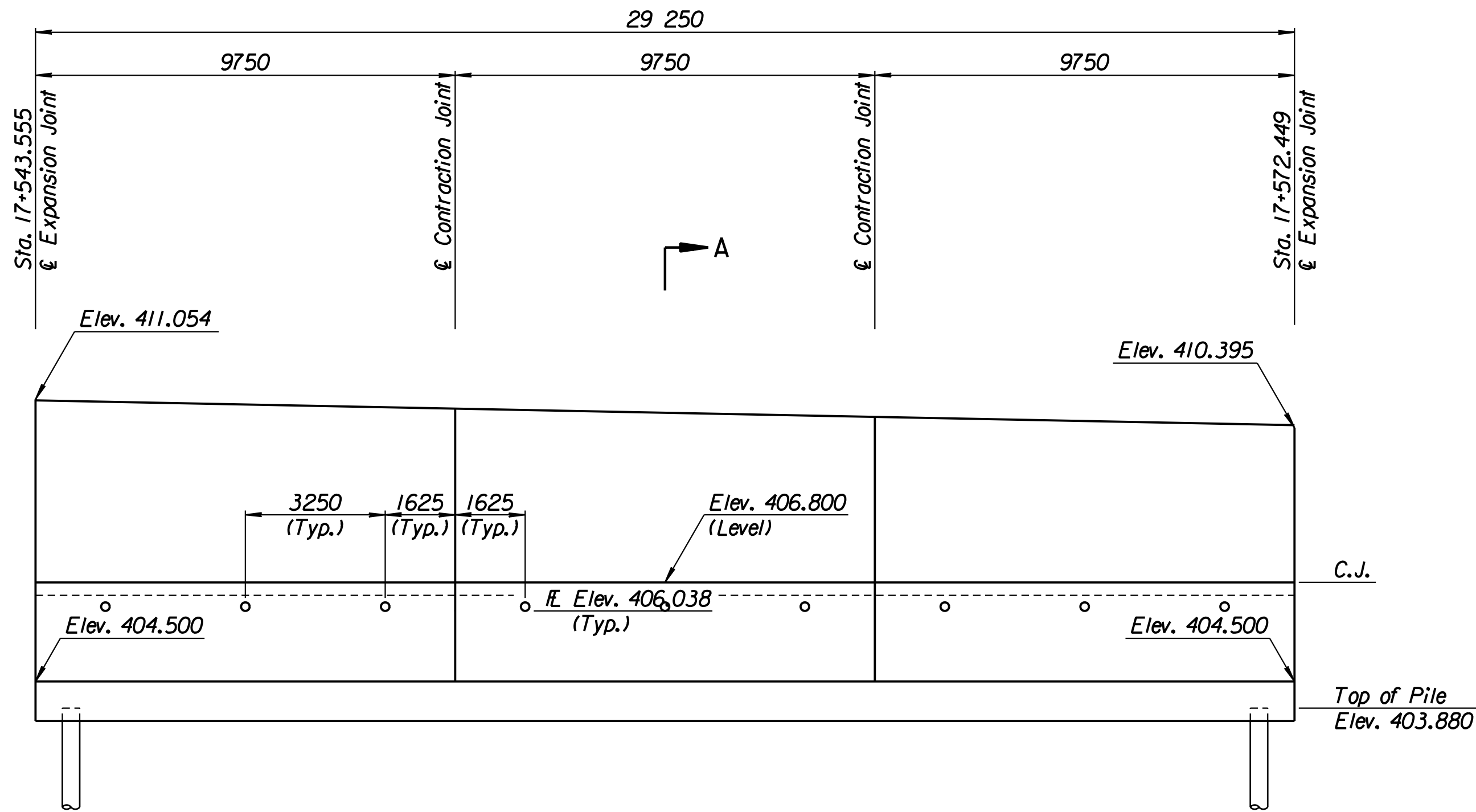


STATE	PROJECT NO.	YEAR	SHEET NO.	TOTAL SHEETS
KANSAS	54-87 K-6657-01	2002	333	1122

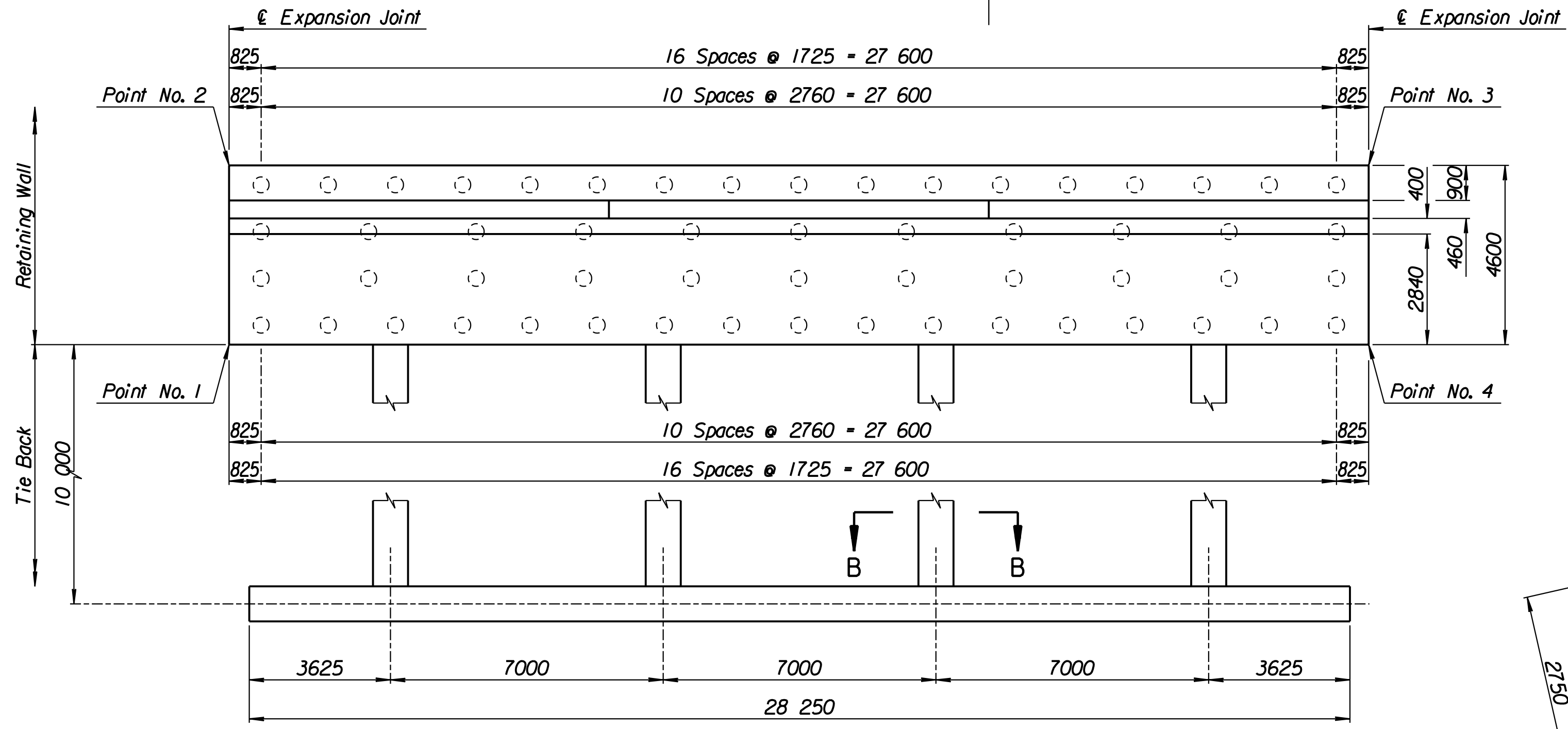
LAYOUT INFORMATION				
Point No.	North Coordinate	East Coordinate	Station	Offset
1	512105.315	493399.016	17+543.555	14.795 Lt.
2	512109.588	493397.313	17+543.555	19.395 Lt.
3	512120.162	493424.603	17+572.449	19.395 Lt.
4	512115.857	493426.223	17+572.449	14.795 Lt.

REINFORCING STEEL							
Straight Bars				Bent Bars			
Mark	Size	Number	Length	Mark	Size	Number	Length
F6-1	*25	246	4520	F6-3	*29	195	3250
F6-2	*25	60	15 540	F6-4	*19	195	2320
F6-6	*25	195	4420	F6-5	*25	195	1910
F6-7	*13	99	3570	F6-9	*19	99	1350
F6-8	*16	129	9650				
F6-10	*19	99	3440				
F6-11	*13	99	3540				
F6-12	*29	48	4000				

WALL QUANTITIES		
Item	Quantity	Unit
Pressure Grouted Pile (406 mm)	672.0	m
Concrete (Grade 30)(AE)	218.9	m <sup>3</sup>
Reinforcing Steel (Grade 420)	21 907	kg
Class III Excavation	236.9	m <sup>3</sup>



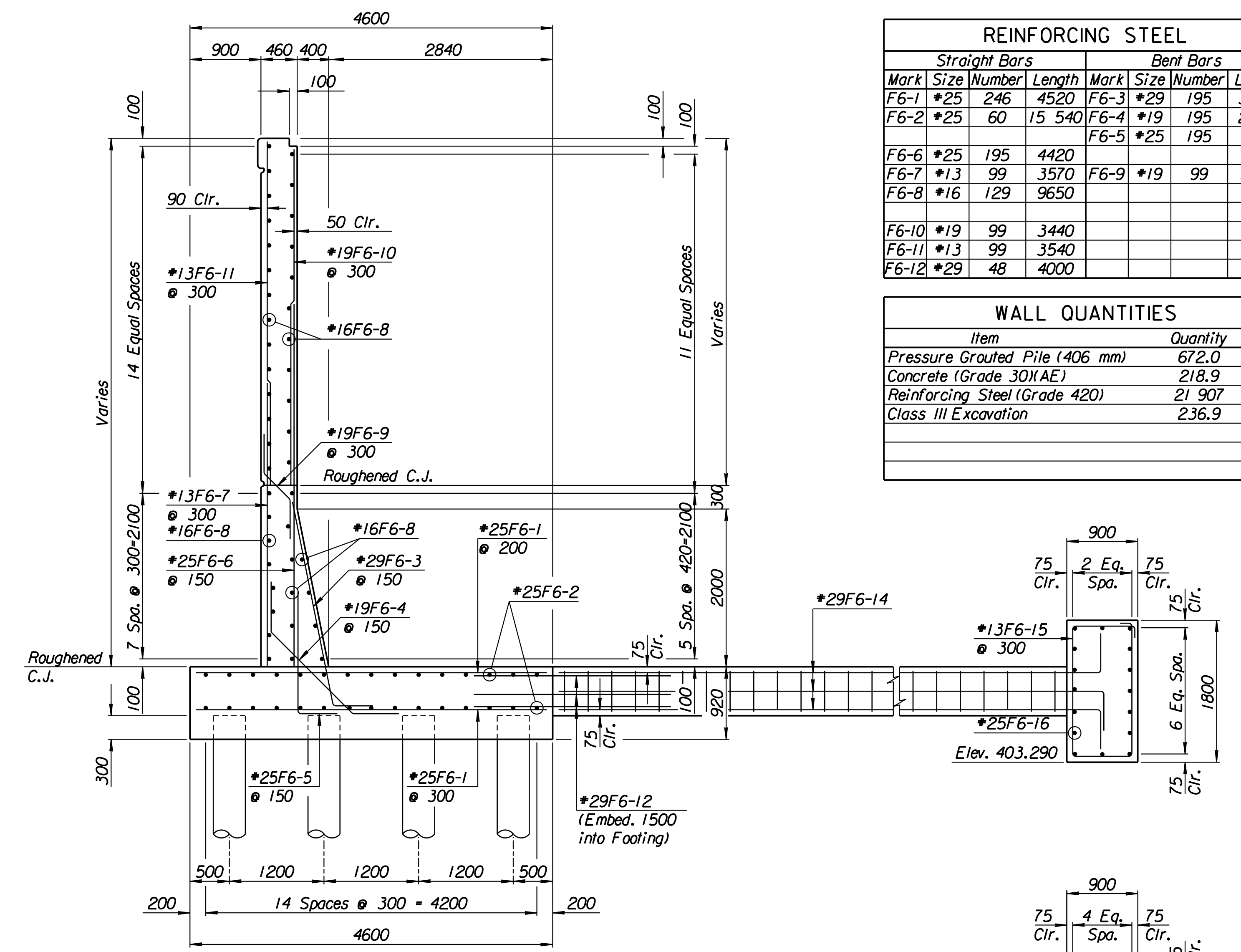
ELEVATION



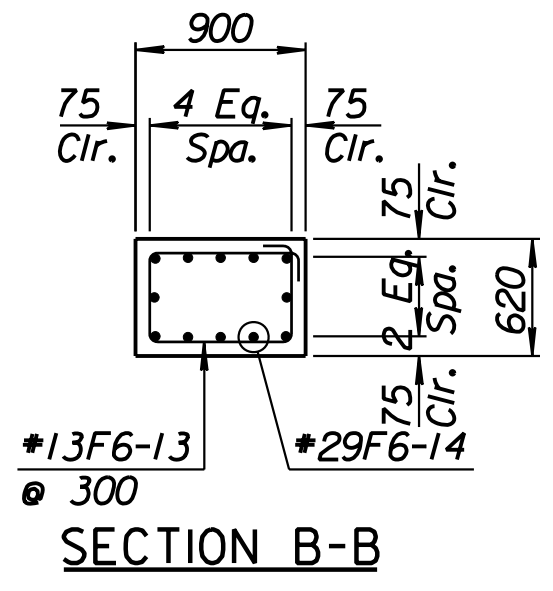
PLAN

TIE BACK REINFORCING STEEL							
Straight Bars				Bent Bars			
Mark	Size	Number	Length	Mark	Size	Number	Length
F6-16	*25	32	15 040	F6-13	*13	128	2740
				F6-14	*29	48	10 500
				F6-15	*13	94	5100

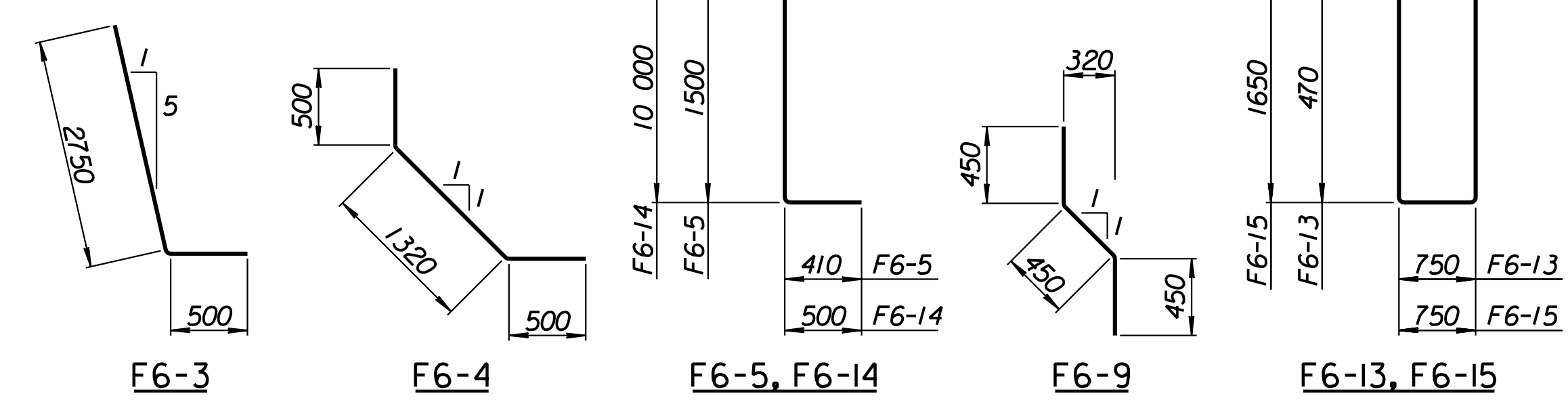
TIE BACK QUANTITIES		
Item	Quantity	Unit
Concrete (Grade 30)(AE)	67.1	m <sup>3</sup>
Reinforcing Steel (Grade 420)	5288	kg



SECTION A-A



SECTION B-B



BENDING DIAGRAMS  
All dimensions are out to out of bars.

RECORD DRAWING

1			
No.	Revisions	By	Date
CITY OF WICHITA			
<b>TYLER NORTHEAST WALL</b>			
STA. 17+543.555 TO STA. 17+572.449			
SEDGWICK COUNTY			
 <b>Professional Engineering Consultants, P.A.</b> 303 S. TOPEKA • WICHITA, KANSAS 67202 316-262-2691 • FAX 316-262-3003			
Designed by	P.D.F.	Checked by	R.A.S.
Drawn by	W.L.L.	Date	April 11, 2002
		Job No.	97362

Drawn by: wil  
 Plotted by: drp  
 4-11-2002  
 I:/1997/97362/As-Built/s/dgn/s/Vol 2/Sh 333-Tyler-NEWall-6.dgn Last Rev: 8-23-07 By: gdr