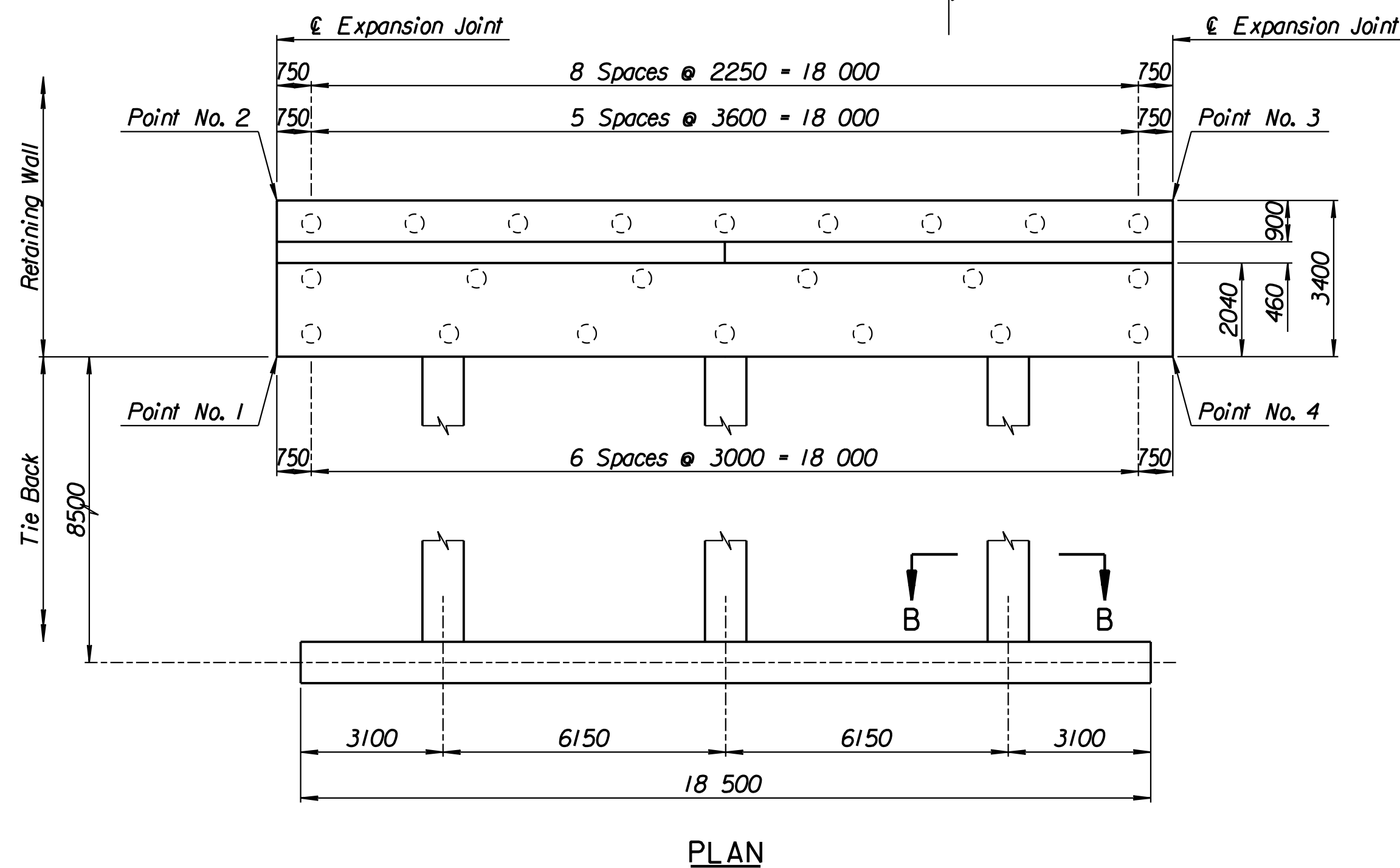
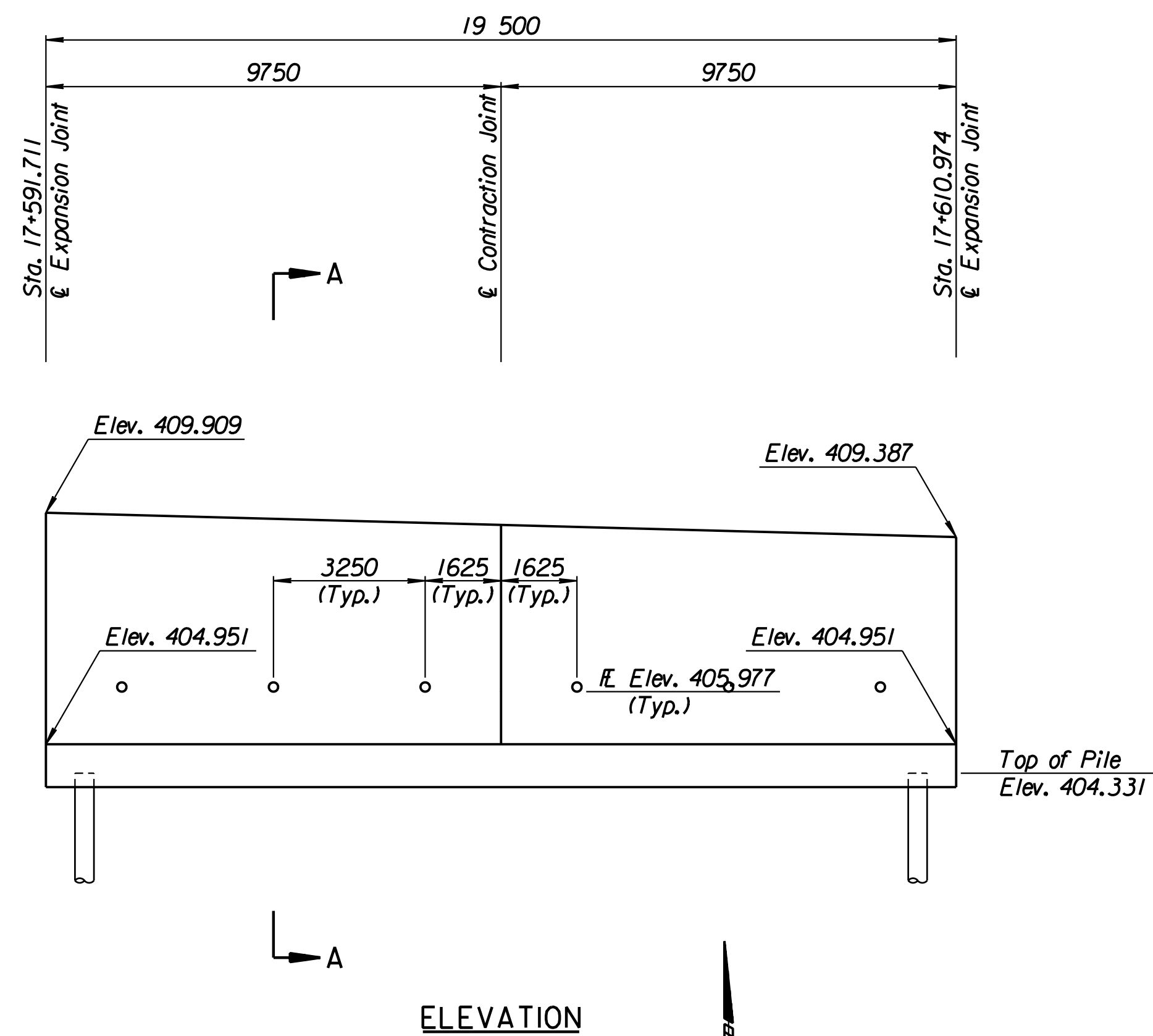


STATE	PROJECT NO.	YEAR	SHEET NO.	TOTAL SHEETS
KANSAS	54-87 K-6657-01	2002	335	1122

LAYOUT INFORMATION				
Point No.	North Coordinate	East Coordinate	Station	Offset
1	512123.722	493444.063	17+591.711	15.995 Lt.
2	512126.919	493442.907	17+591.711	19.395 Lt.
3	512133.440	493461.296	17+610.974	19.395 Lt.
4	512130.228	493462.412	17+610.974	15.995 Lt.

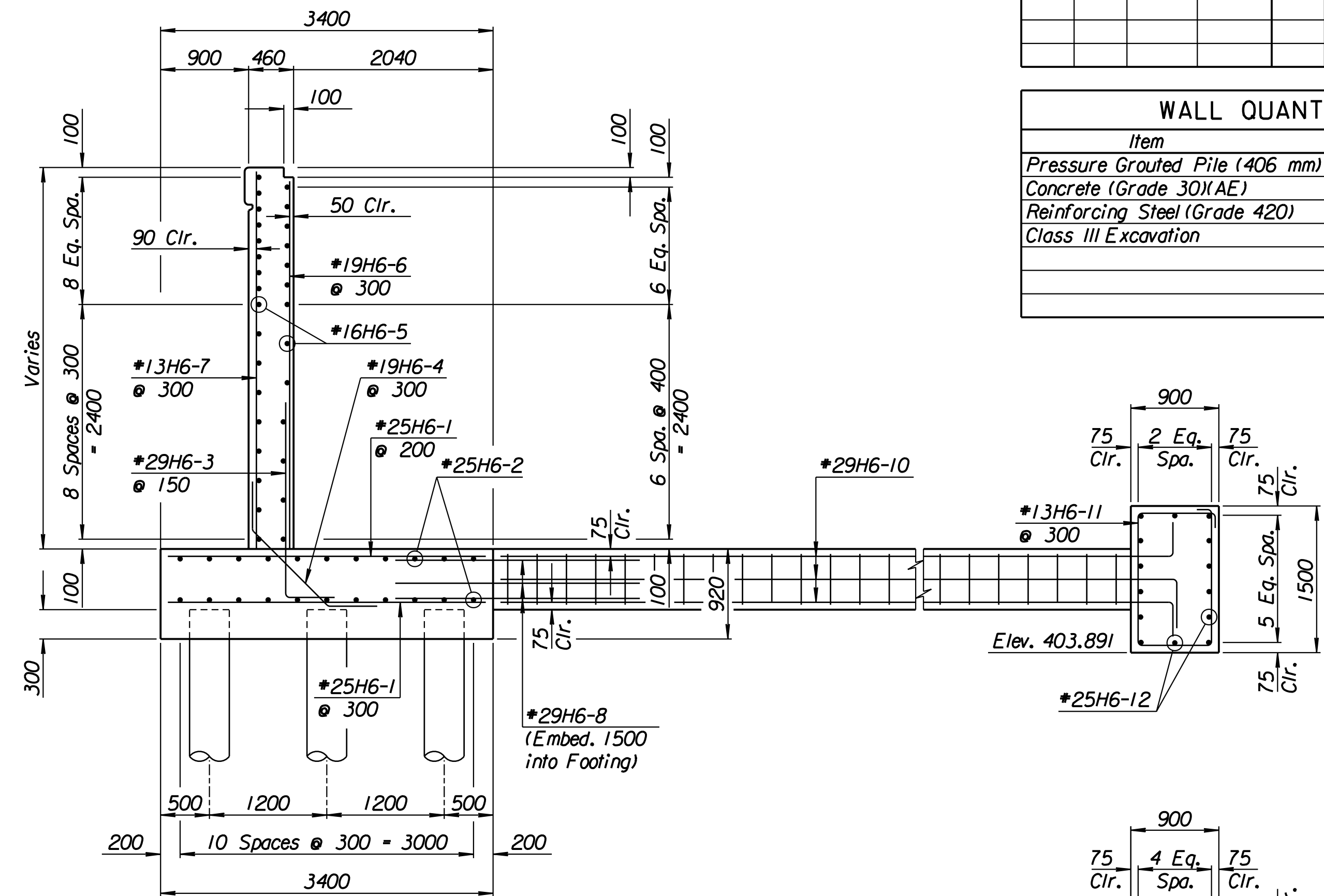
REINFORCING STEEL							
Straight Bars				Bent Bars			
Mark	Size	Number	Length	Mark	Size	Number	Length
H6-1	*25	164	3320	H6-3	*29	130	3420
H6-2	*25	44	10 670	H6-4	*19	66	1970
H6-5	*16	60	9650				
H6-6	*19	66	4280				
H6-7	*13	66	4900				
H6-8	*29	36	4000				

WALL QUANTITIES		
Item	Quantity	Unit
Pressure Grouted Pile (406 mm)	264.0	m
Concrete (Grade 30)(AE)	102.9	m ³
Reinforcing Steel (Grade 420)	9149	kg
Class III Excavation	90.5	m ³



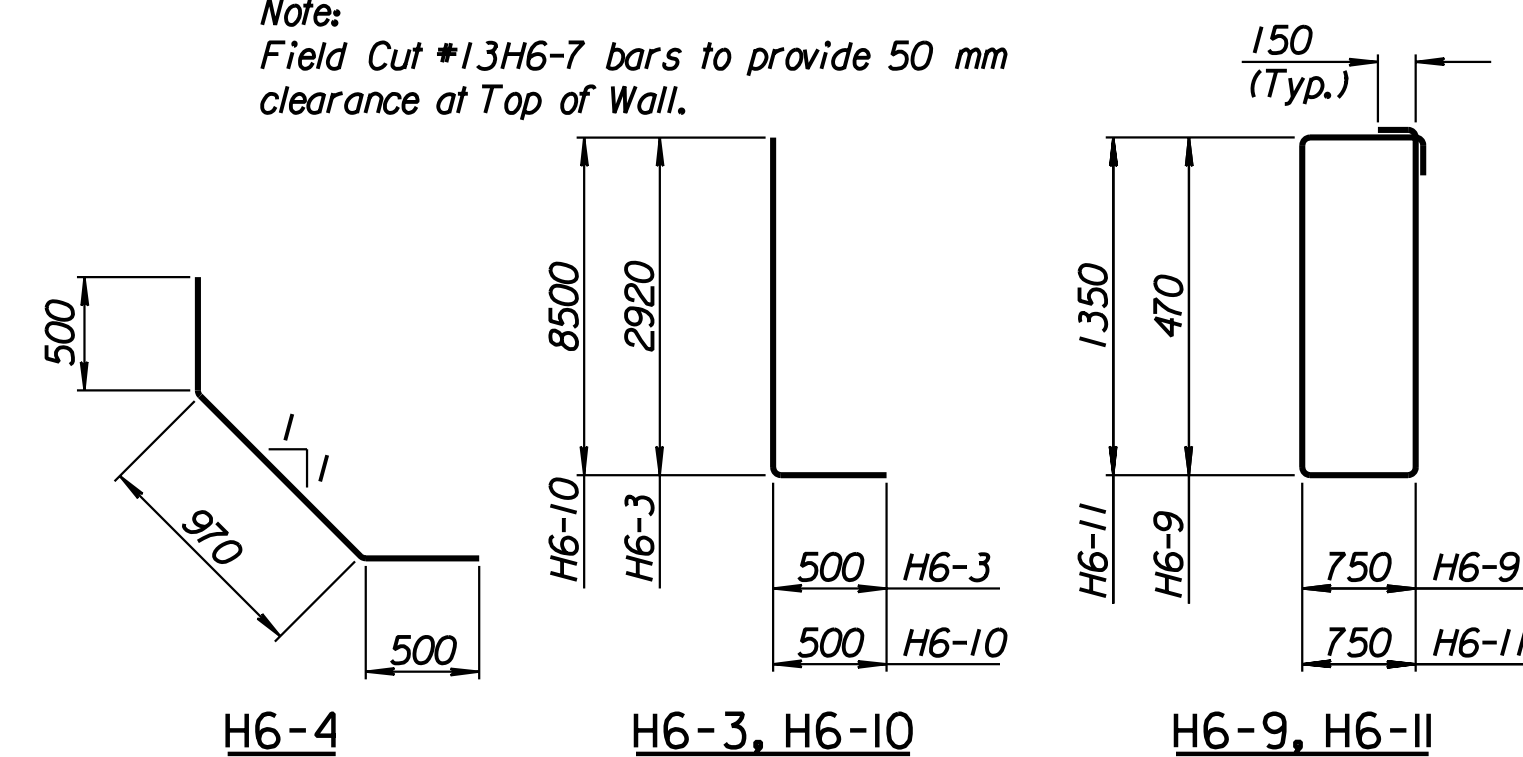
TIE BACK REINFORCING STEEL							
Straight Bars			Bent Bars				
Mark	Size	Number	Length	Mark	Size	Number	Length
H6-12	*25	28	10 170	H6-9	*13	81	2740
				H6-10	*29	36	9000
				H6-11	*13	63	4500

TIE BACK QUANTITIES		
Item	Quantity	Unit
Concrete (Grade 30)(AE)	38.5	m ³
Reinforcing Steel (Grade 420)	3273	kg



SECTION A-A

Note:
Field Cut #13H6-7 bars to provide 50 mm clearance at Top of Wall.



BENDING DIAGRAMS

All dimensions are out to out of bars.

RECORD DRAWING

No.	Revisions	By	Date
1			

CITY OF WICHITA

TYLER NORTHEAST WALL
STA. 17+591.711 TO STA. 17+610.974

SEDGWICK COUNTY

Professional Engineering Consultants, P.A.
303 S. TOPEKA • WICHITA, KANSAS 67202
316-262-2691 • FAX 316-262-3003

Designed by P.D.F. Checked by R.A.S.
Drawn by W.L.L. Date April, 2002 Job No. 97362

Drawn by: wil
 Plotted by: drp
 4-11-2002
 I:/1997/97362/As-Built/s/dgn/s/Vol 2/Sh 335-Tyler-NEWall-8.dgn Last Rev: 8-23-07 By: gdr