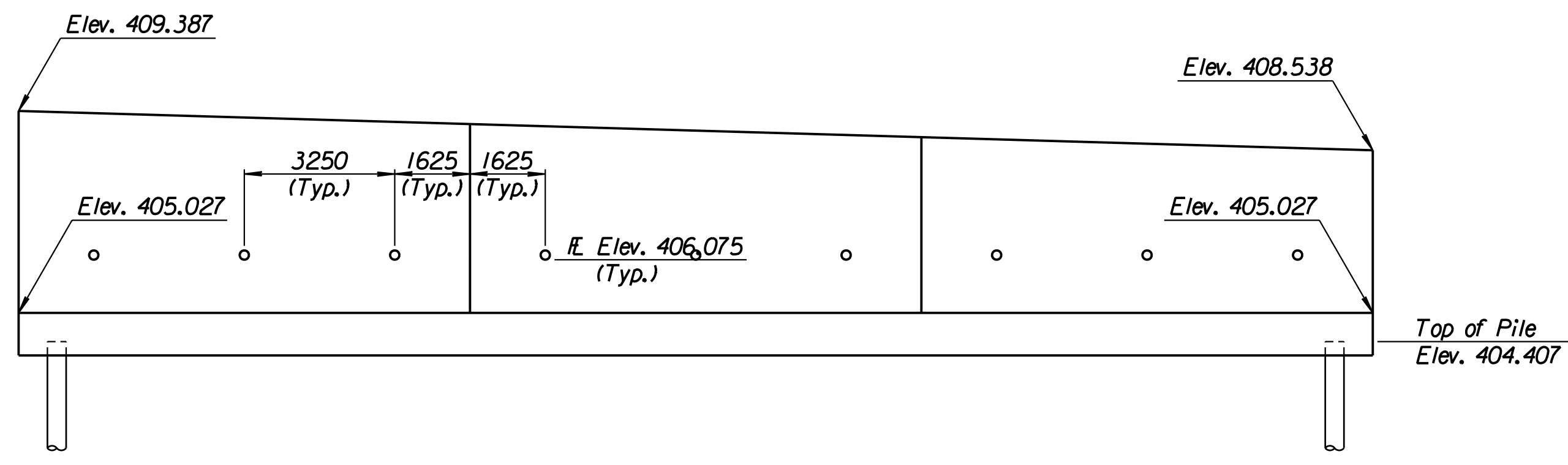
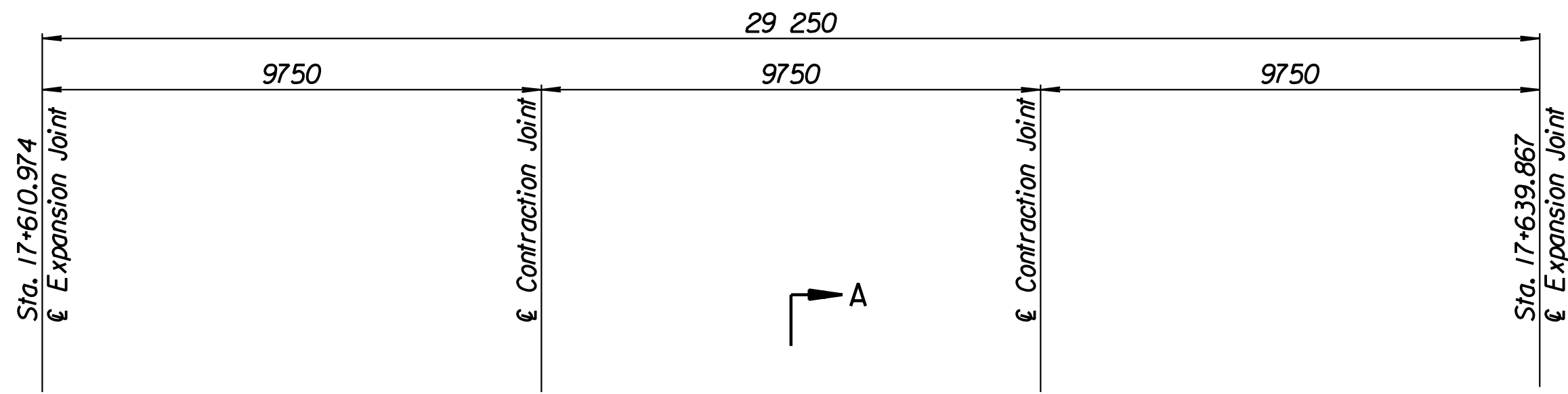


STATE	PROJECT NO.	YEAR	SHEET NO.	TOTAL SHEETS
KANSAS	54-87 K-6657-01	2002	336	1122

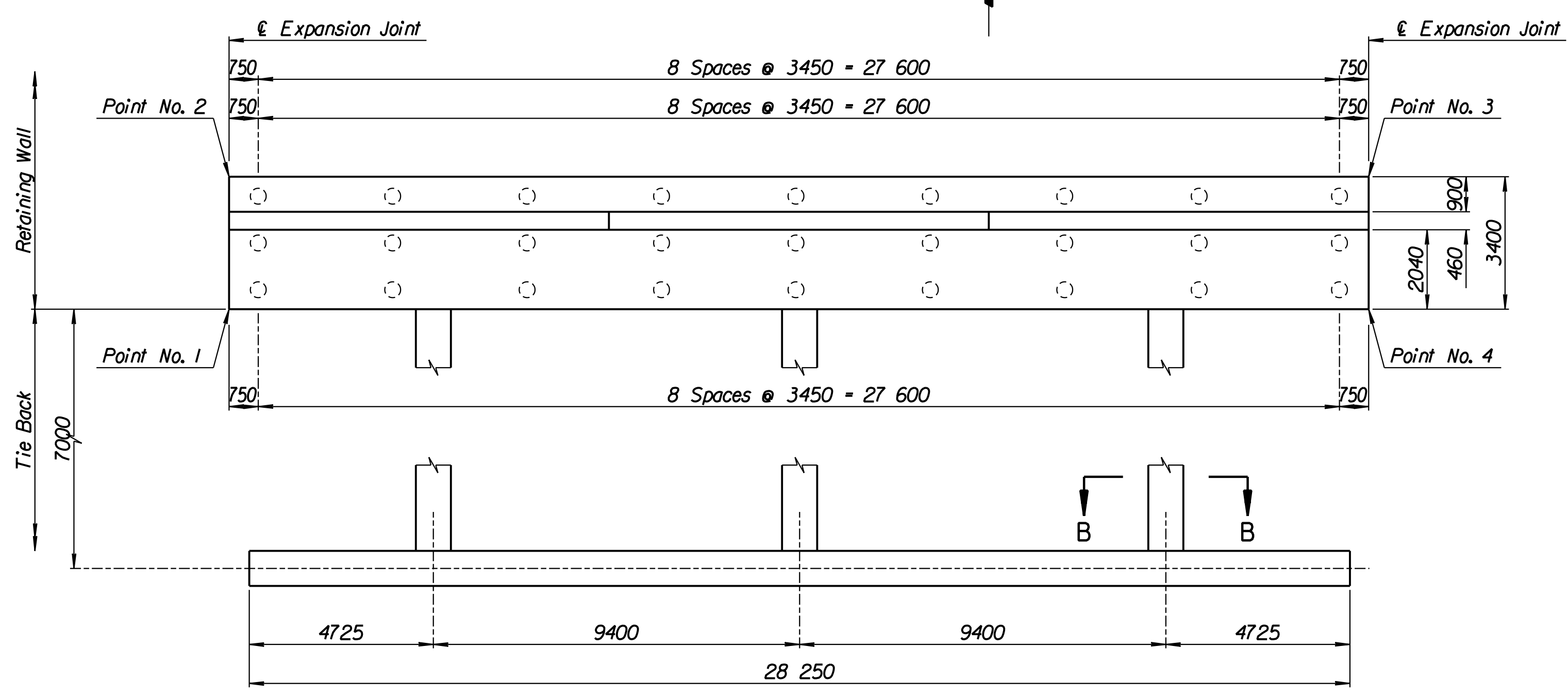
LAYOUT INFORMATION				
Point No.	North Coordinate	East Coordinate	Station	Offset
1	512130.228	493462.412	17+610.974	15.995 Lt.
2	512133.440	493461.296	17+610.974	19.395 Lt.
3	512142.777	493489.033	17+639.867	19.395 Lt.
4	512139.545	493490.087	17+639.867	15.995 Lt.

REINFORCING STEEL							
Straight Bars				Bent Bars			
Mark	Size	Number	Length	Mark	Size	Number	Length
J6-1	*25	246	3320	J6-3	*22	195	2860
J6-2	*25	44	15 540	J6-4	*16	99	1970
J6-5	*16	78	9650				
J6-6	*19	99	3360				
J6-7	*13	99	4300				
J6-8	*29	36	4000				

WALL QUANTITIES		
Item	Quantity	Unit
Pressure Grouted Pile (406 mm)	324.0	m
Concrete (Grade 30)(AE)	144.2	m <sup>3</sup>
Reinforcing Steel (Grade 420)	11 024	kg
Class III Excavation	131.3	m <sup>3</sup>

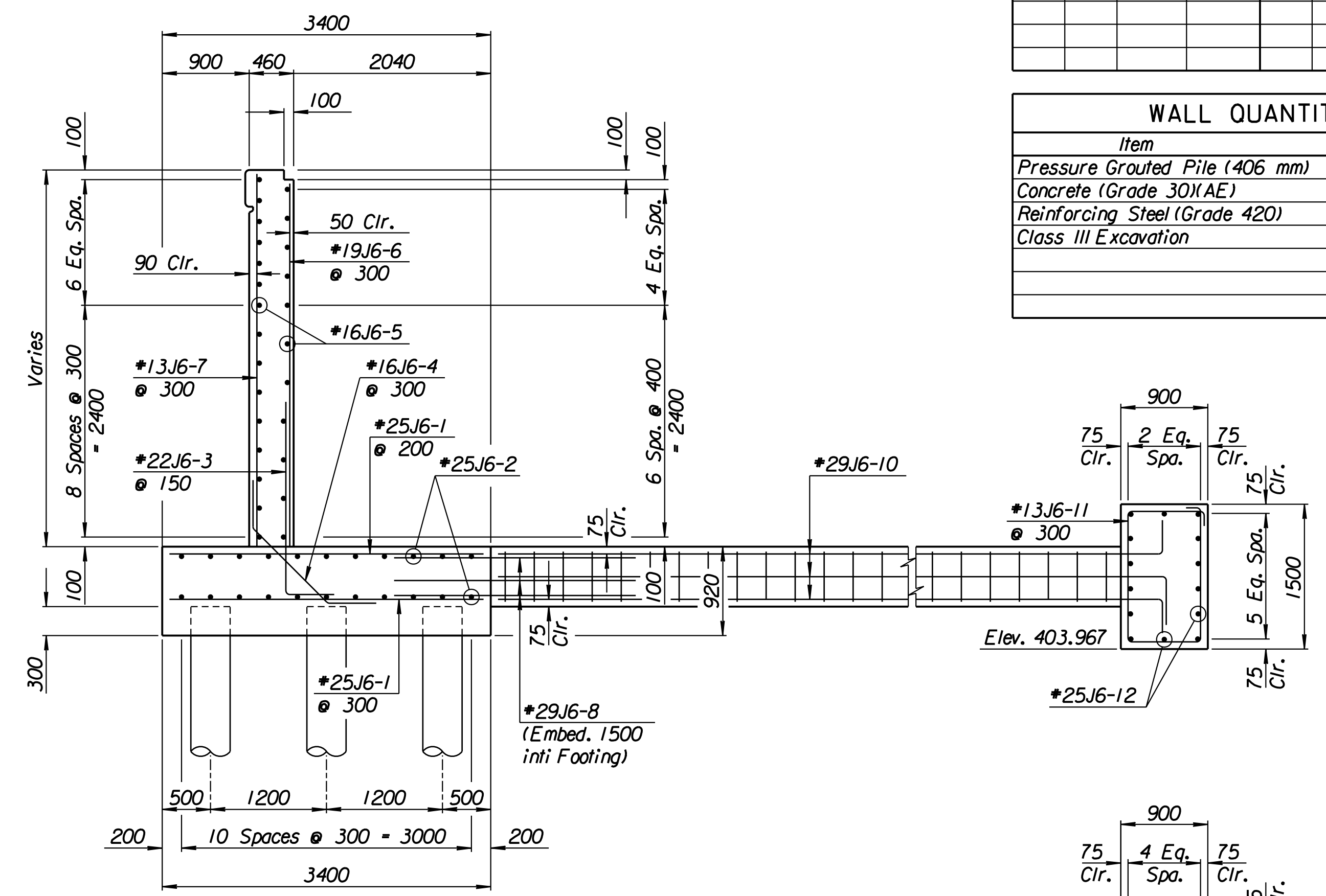


ELEVATION



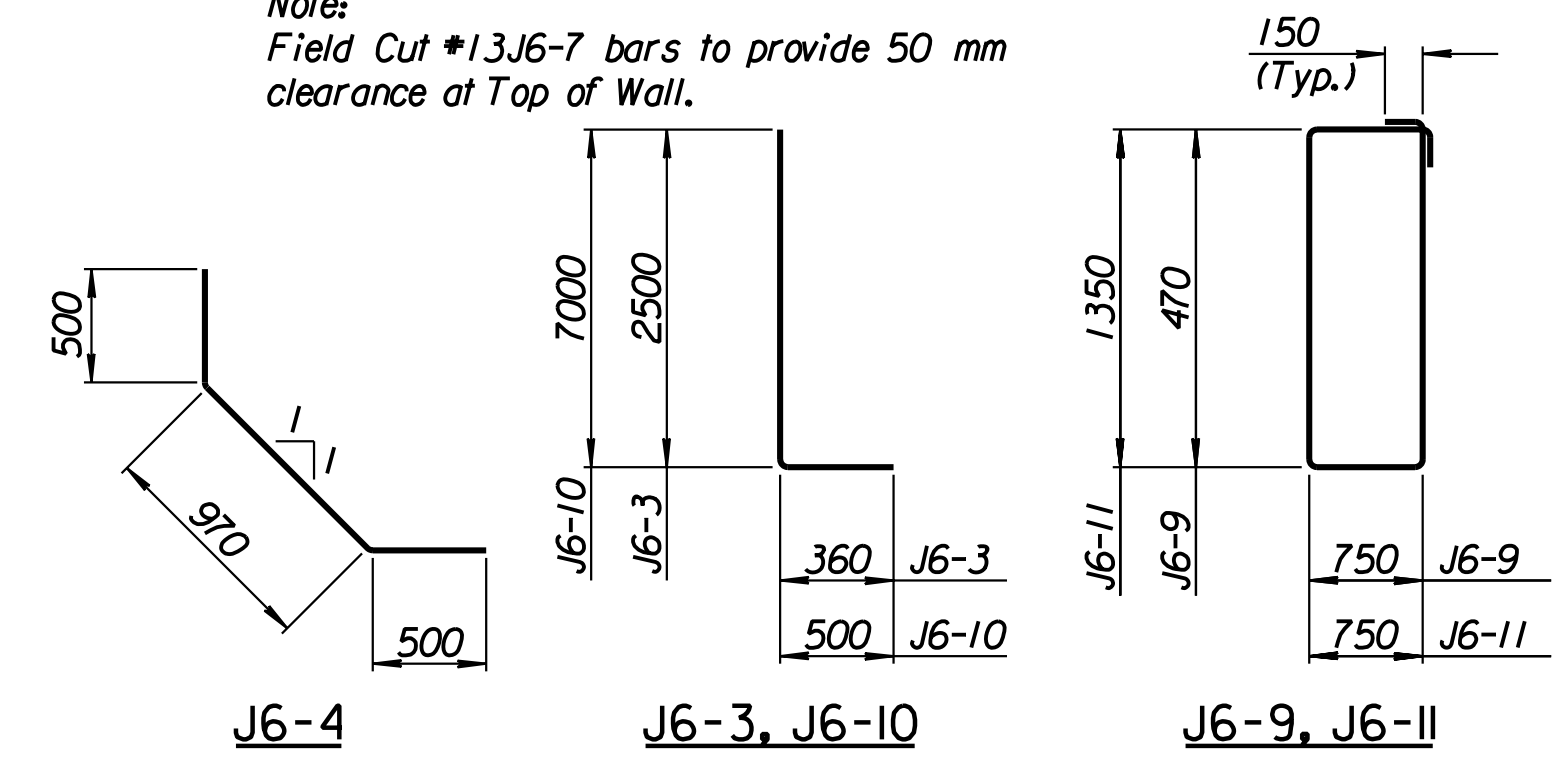
TIE BACK REINFORCING STEEL							
Straight Bars				Bent Bars			
Mark	Size	Number	Length	Mark	Size	Number	Length
J6-12	*25	28	15 040	J6-9	*13	66	2740
				J6-10	*29	36	7500
				J6-11	*13	94	4500

TIE BACK QUANTITIES		
Item	Quantity	Unit
Concrete (Grade 30)(AE)	49.1	m <sup>3</sup>
Reinforcing Steel (Grade 420)	3640	kg

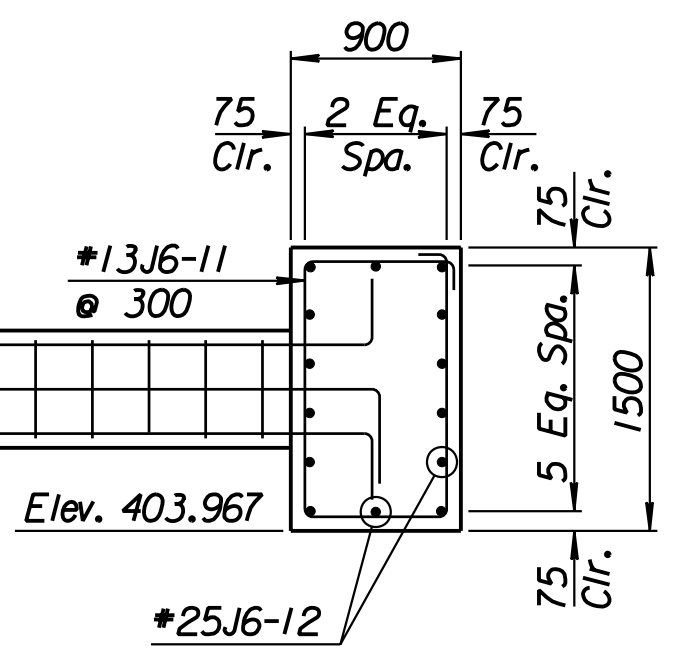


SECTION A-A

Note:  
Field Cut \*13J6-7 bars to provide 50 mm clearance at Top of Wall.



BENDING DIAGRAMS  
All dimensions are out to out of bars.



SECTION B-B

1			
No.	Revisions	By	Date
CITY OF WICHITA			
<b>TYLER NORTHEAST WALL</b>			
STA. 17+610.974 TO STA. 17+639.867			
SEDGWICK COUNTY			
<b>Professional Engineering Consultants, P.A.</b> 303 S. TOPEKA • WICHITA, KANSAS 67202 316-262-2691 • FAX 316-262-3003			
Designed by	P.D.F.	Checked by	R.A.S.
Drawn by	W.L.L.	Date	April 11, 2002
		Job No.	97362

Drawn by: wil  
 Plotted by: drp  
 4-11-2002  
 I:/1997/97362/As-Built/s/dgn/s/Vol 2/Sh 336-Tyler-NEWall-9.dgn Last Rev: 8-23-07 By: gdr