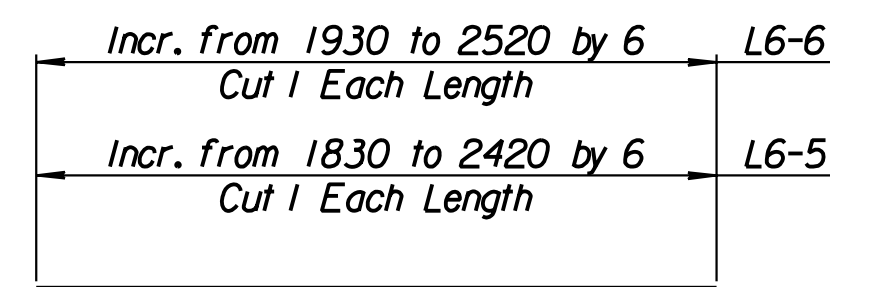
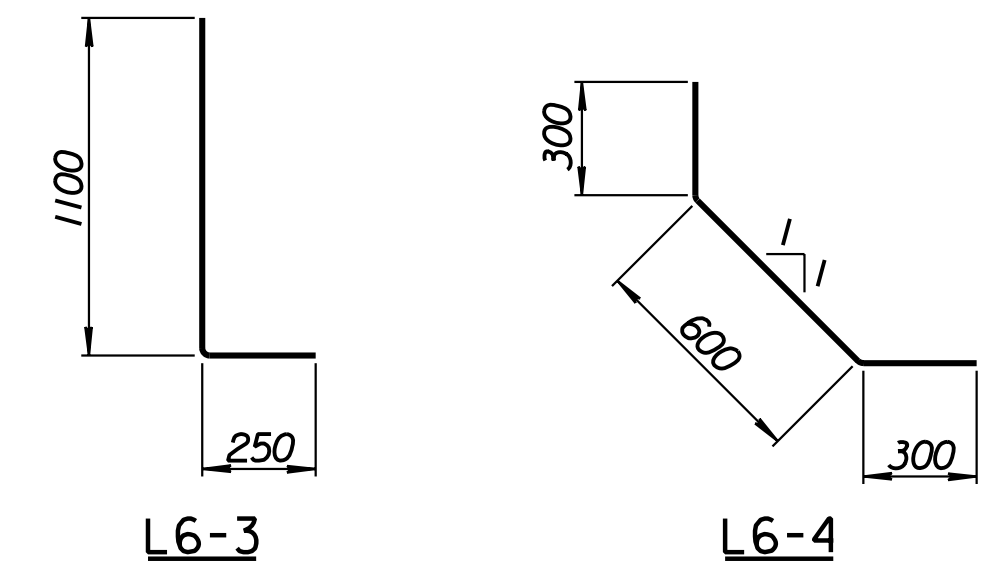


STATE	PROJECT NO.	YEAR	SHEET NO.	TOTAL SHEETS
KANSAS	54-87 K-6657-01	2002	338	1122

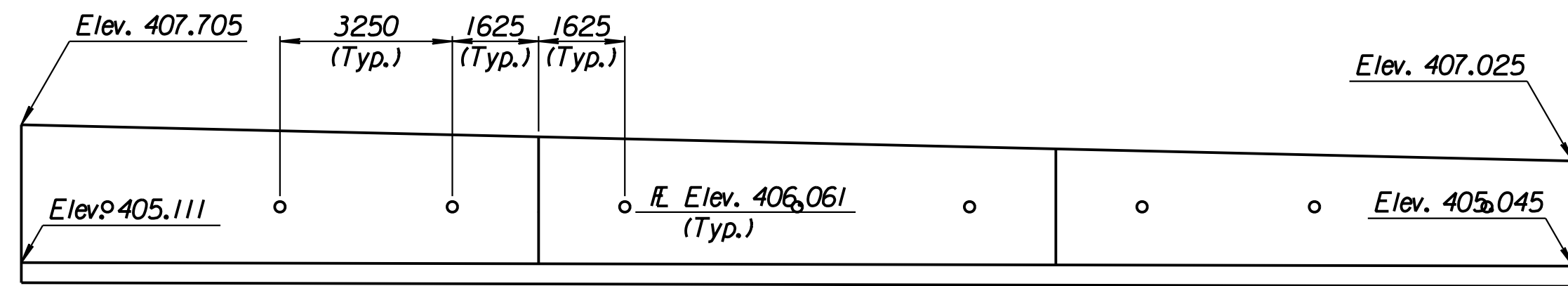
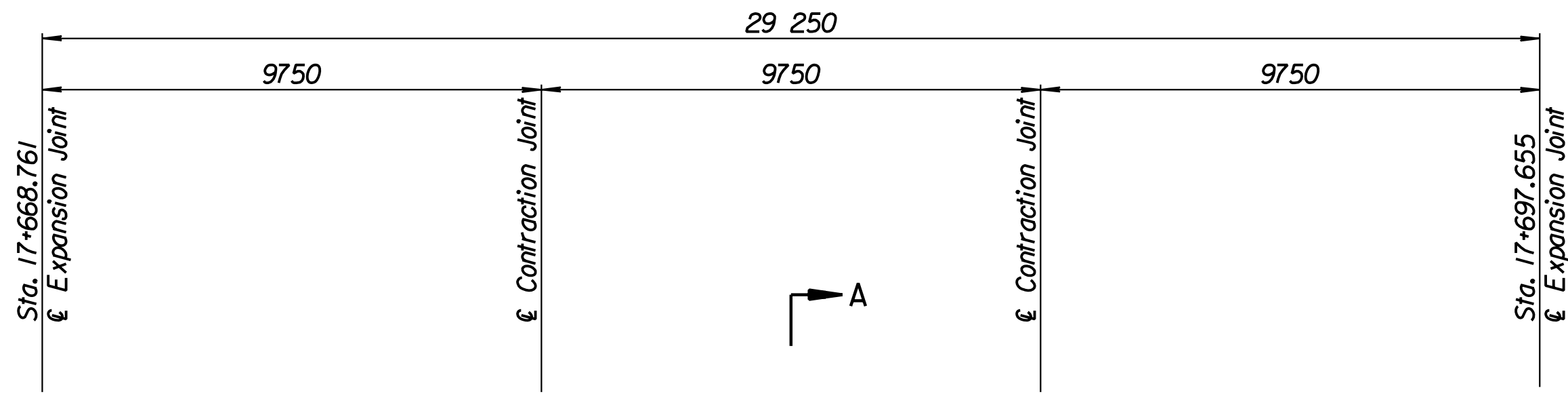
LAYOUT INFORMATION				
Point No.	North Coordinate	East Coordinate	Station	Offset
1	512148.327	493517.937	17+668.761	15.995 Lt.
2	512151.579	493516.945	17+668.761	19.395 Lt.
3	512159.841	493545.022	17+697.655	19.395 Lt.
4	512156.570	493545.950	17+697.655	15.995 Lt.

REINFORCING STEEL							
Straight Bars				Bent Bars			
Mark	Size	Number	Length	Mark	Size	Number	Length
L6-1	*16	246	3320	L6-3	*16	195	1350
L6-2	*13	44	14 960	L6-4	*13	99	1200
L6-5	*16	99	Varies				
L6-6	*13	99	Varies				
L6-7	*13	54	9650				

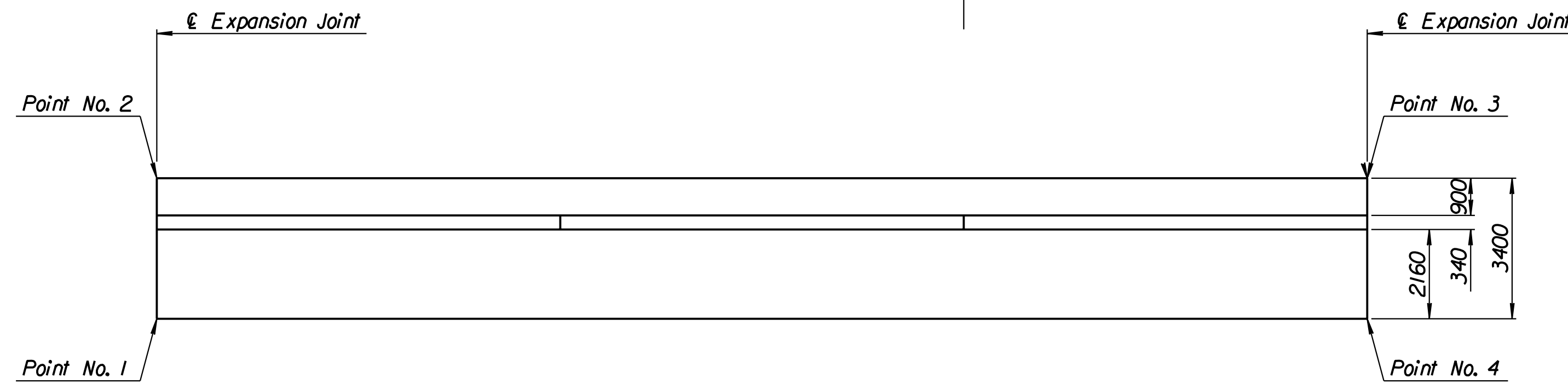
WALL QUANTITIES		
Item	Quantity	Unit
Concrete (Grade 30)(AE)	60.2	m ³
Reinforcing Steel (Grade 420)	3512	kg
Class III Excavation	54.9	m ³



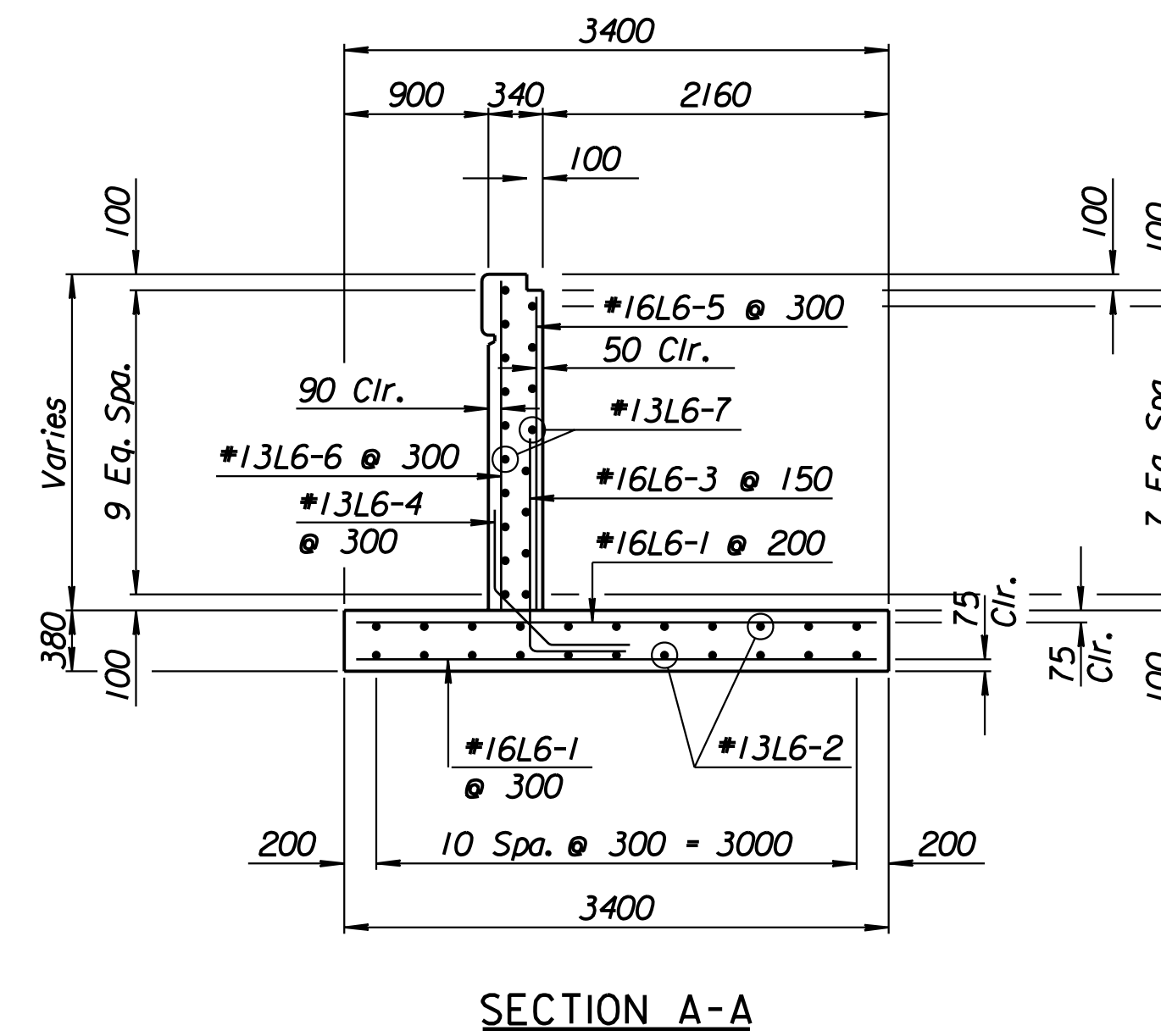
BENDING DIAGRAMS
All dimensions are out to out of bars.



ELEVATION



PLAN



SECTION A-A

Drawn by: wil
 Plotted by: drp
 4-11-2002
 I:/1997/97362/As-Builts/dgn/s/Vol 2/Sh 338-Tyler-NE wall-1.dgn Last Rev: 8-23-07 By: gdr

RECORD DRAWING

1			
No.	Revisions	By	Date
CITY OF WICHITA			
TYLER NORTHEAST WALL			
STA. 17+668.761 TO STA. 17+697.655			
SEDGWICK COUNTY			
Professional Engineering Consultants, P.A. 303 S. TOPEKA • WICHITA, KANSAS 67202 316-262-2691 • FAX 316-262-3003			
Designed by	P.D.F.	Checked by	R.A.S.
Drawn by	W.L.L.	Date	April, 2002
		Job No.	97362