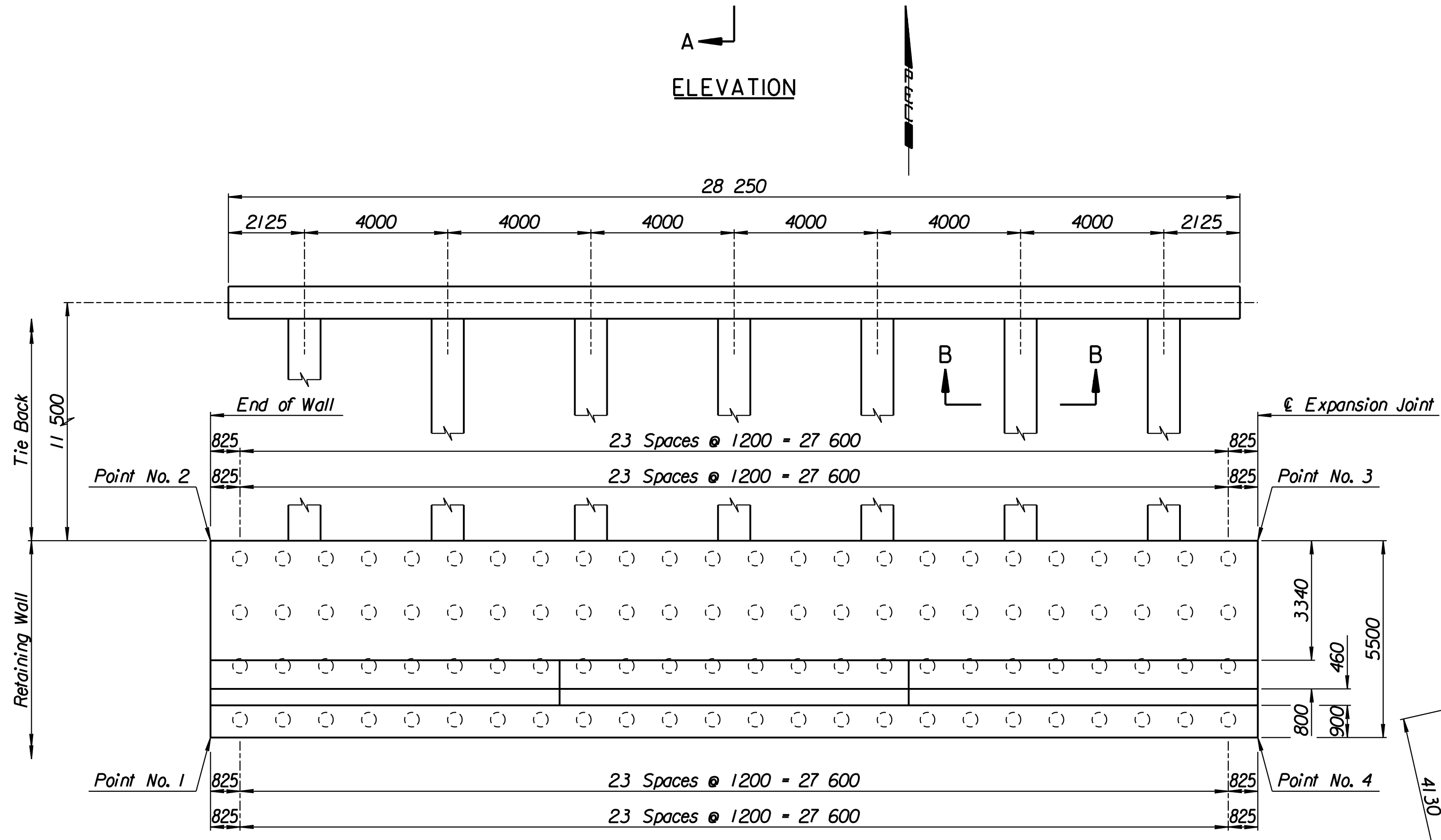
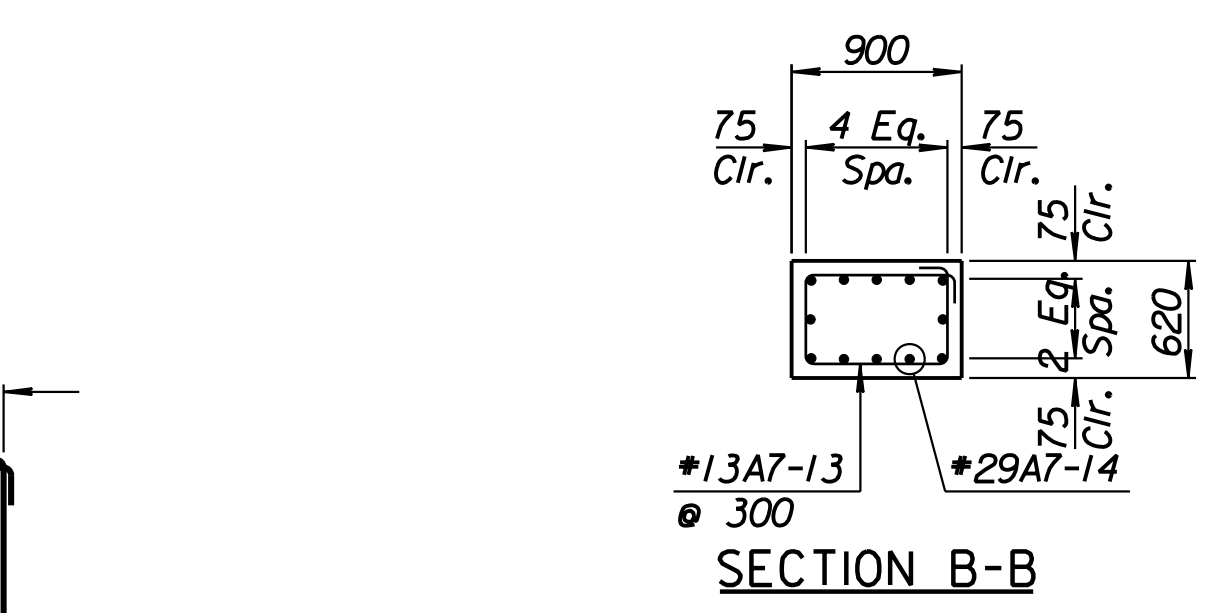
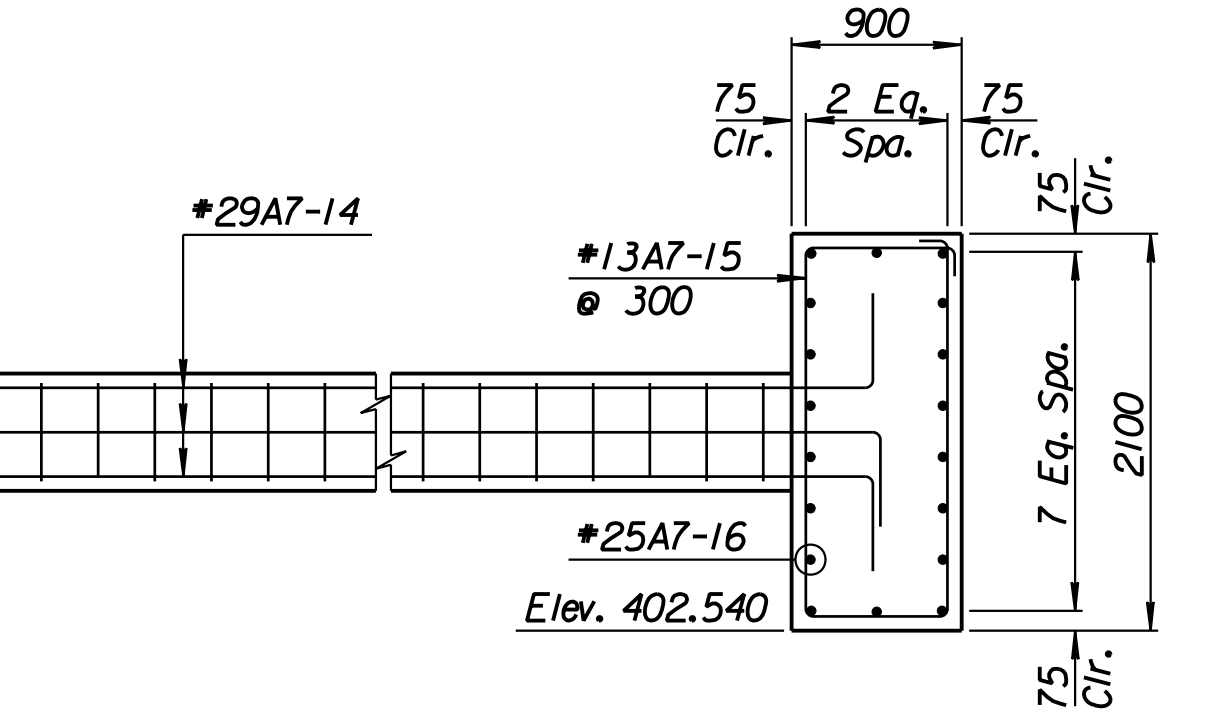
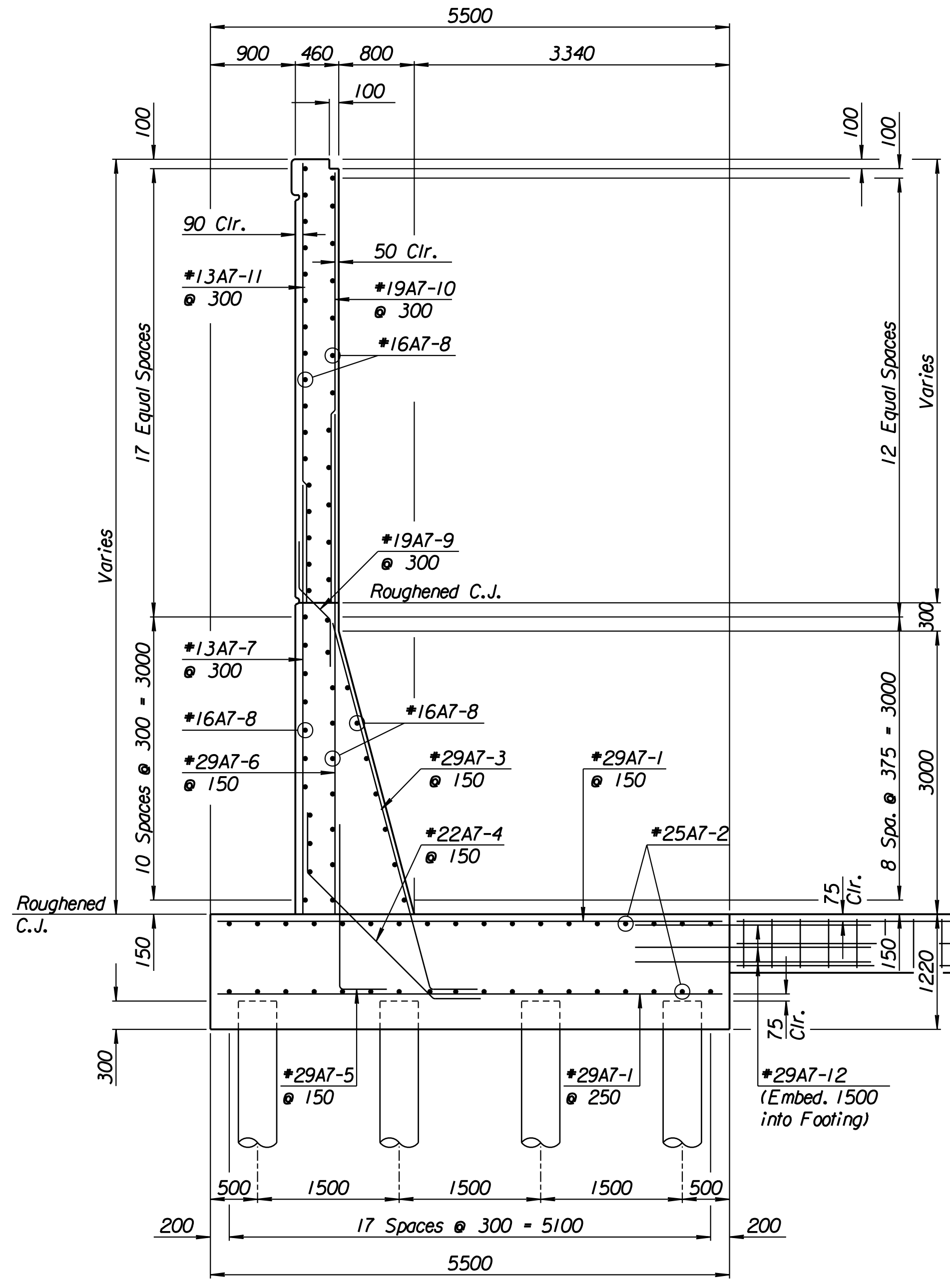
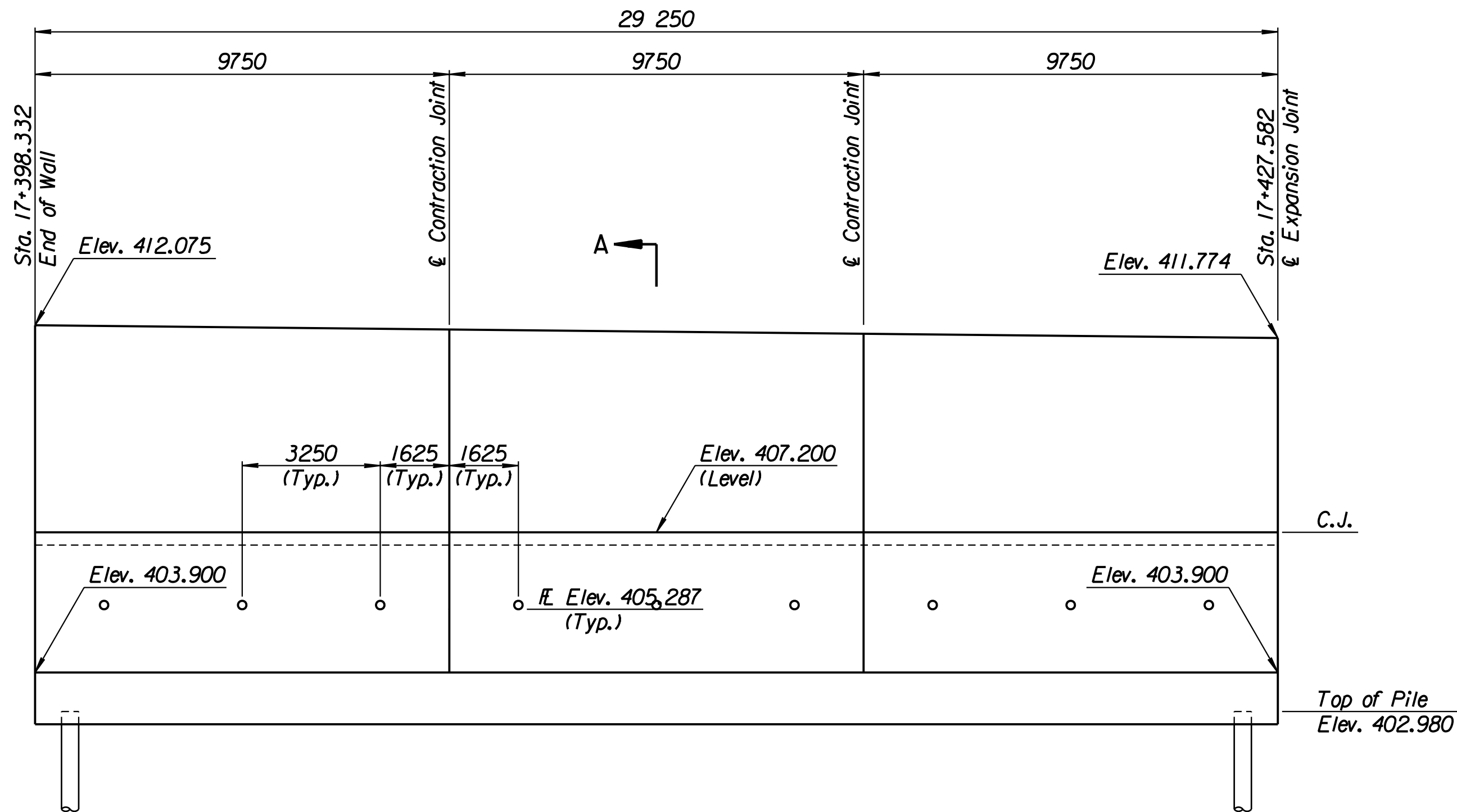


STATE	PROJECT NO.	YEAR	SHEET NO.	TOTAL SHEETS
KANSAS	54-87 K-6657-01	2002	340	1122

LAYOUT INFORMATION				
Point No.	North Coordinate	East Coordinate	Station	Offset
1	512014.920	493280.021	17+398.332	19.395 Rt.
2	512019.908	493277.704	17+398.332	13.895 Rt.
3	512032.230	493304.232	17+427.582	13.895 Rt.
4	512027.242	493306.549	17+427.582	19.395 Rt.

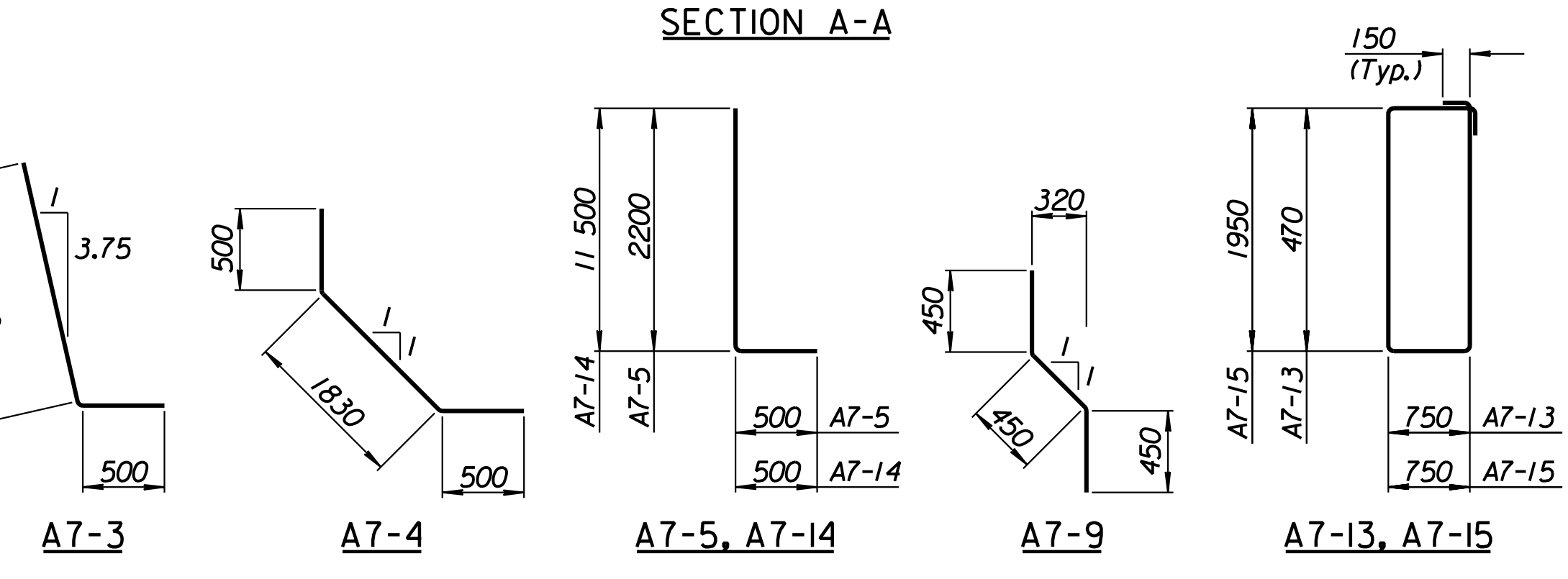
REINFORCING STEEL							
Straight Bars				Bent Bars			
Mark	Size	Number	Length	Mark	Size	Number	Length
A7-1	*29	312	5420	A7-3	*29	195	4630
A7-2	*25	72	15 540	A7-4	*22	195	2830
A7-6	*29	195	5450	A7-5	*29	195	2700
A7-7	*13	99	4210	A7-9	*19	99	1350
A7-8	*16	168	9650				
A7-10	*19	99	4420				
A7-11	*13	99	4520				
A7-12	*29	84	4000				

WALL QUANTITIES		
Item	Quantity	Unit
Pressure Grouted Pile (406 mm)	1152.0	m
Concrete (Grade 30)(AE)	339.0	m ³
Reinforcing Steel (Grade 420)	33 643	kg
Class III Excavation	532.4	m ³



TIE BACK REINFORCING STEEL							
Straight Bars				Bent Bars			
Mark	Size	Number	Length	Mark	Size	Number	Length
A7-16	*25	36	15 040	A7-13	*13	259	2740
				A7-14	*29	84	12 000
				A7-15	*13	94	5700

TIE BACK QUANTITIES		
Item	Quantity	Unit
Concrete (Grade 30)(AE)	96.6	m ³
Reinforcing Steel (Grade 420)	8490	kg



BENDING DIAGRAMS
All dimensions are out to out of bars.

RECORD DRAWING

1			
No.	Revisions	By	Date
CITY OF WICHITA			
TYLER SOUTHEAST WALL			
STA. 17+398.332 TO STA. 17+427.582			
SEDGWICK COUNTY			
Professional Engineering Consultants, P.A.			
303 S. TOPEKA • WICHITA, KANSAS 67202			
316-262-2691 • FAX 316-262-3003			
Designed by	P.D.F.	Checked by	R.A.S.
Drawn by	W.L.L.	Date	April, 2002
		Job No.	97362

Drawn by: wil
 Plotted by: drp
 3-22-2002
 1:1997:97362:As-Built:1.dgn
 Vol 2/Sh 340-Tyler-SEWall-1.dgn
 Last Rev: 8-23-07
 By: gdr