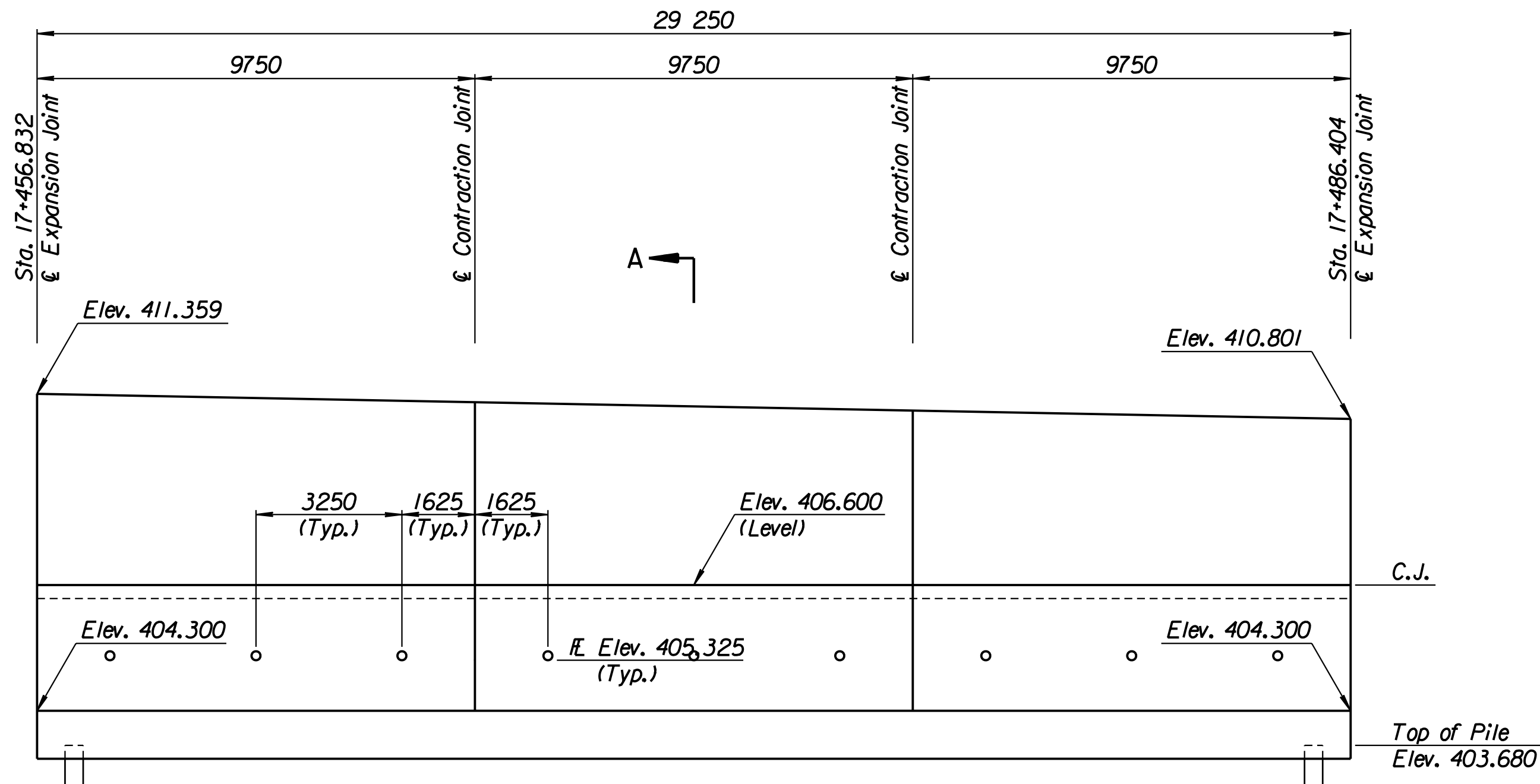


STATE	PROJECT NO.	YEAR	SHEET NO.	TOTAL SHEETS
KANSAS	54-87 K-6657-01	2002	342	1122

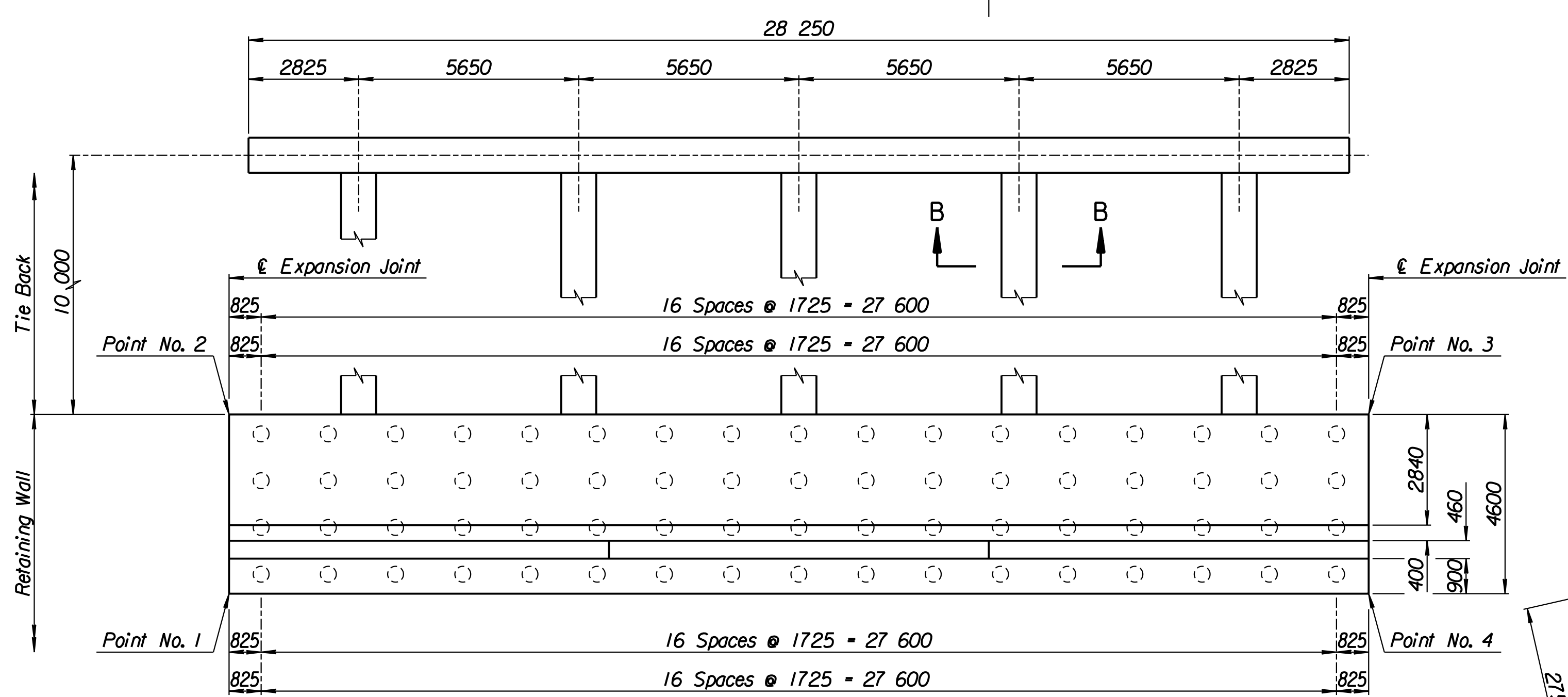
LAYOUT INFORMATION				
Point No.	North Coordinate	East Coordinate	Station	Offset
1	512039.563	493333.077	17+456.832	19.395 Rt.
2	512043.735	493331.139	17+456.832	14.795 Rt.
3	512055.879	493357.819	17+486.404	14.795 Rt.
4	512051.674	493359.684	17+486.404	19.395 Rt.

REINFORCING STEEL							
Straight Bars				Bent Bars			
Mark	Size	Number	Length	Mark	Size	Number	Length
C7-1	*25	294	4520	C7-3	*29	195	3250
C7-2	*25	60	15 540	C7-4	*19	195	2320
C7-6	*29	195	4710	C7-5	*29	195	2300
C7-7	*13	99	3470	C7-9	*19	99	1350
C7-8	*16	138	9650				
C7-10	*19	99	4050				
C7-11	*13	99	4150				
C7-12	*29	60	4000				

WALL QUANTITIES		
Item	Quantity	Unit
Pressure Grouted Pile (406 mm)	816.0	m
Concrete (Grade 30)(AE)	226.4	m <sup>3</sup>
Reinforcing Steel (Grade 420)	25 358	kg
Class III Excavation	337.3	m <sup>3</sup>



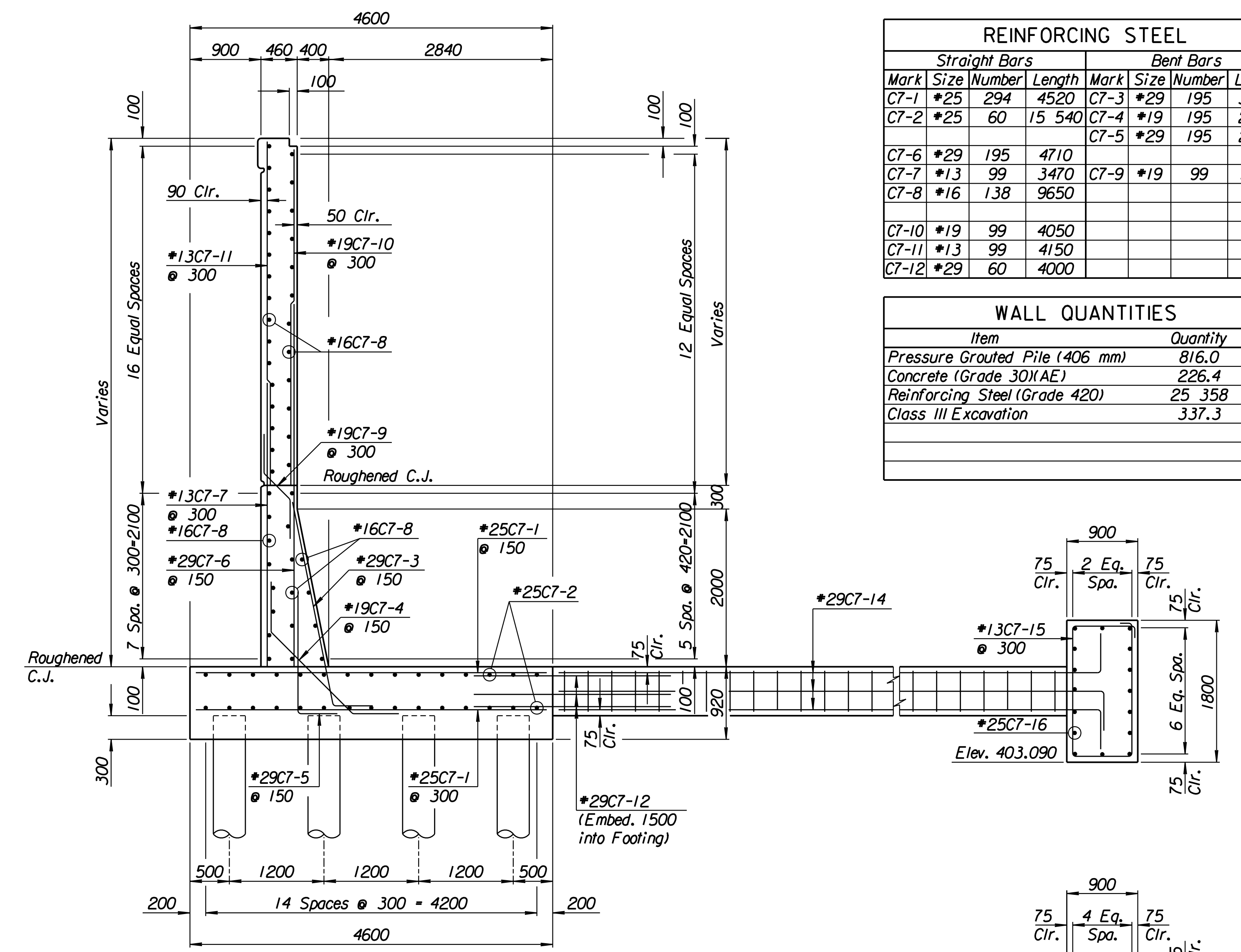
ELEVATION



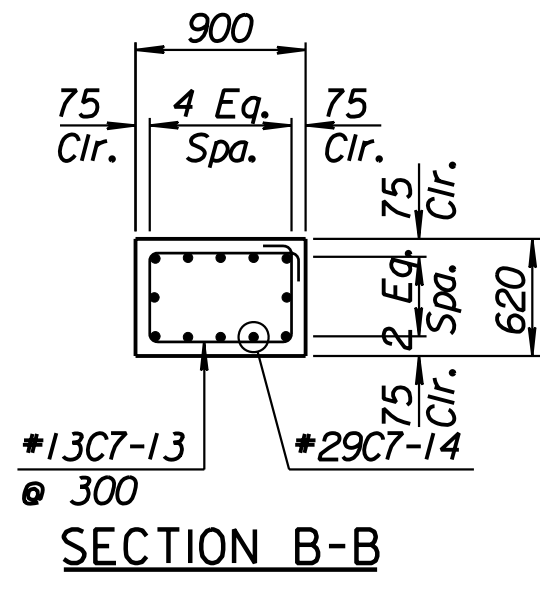
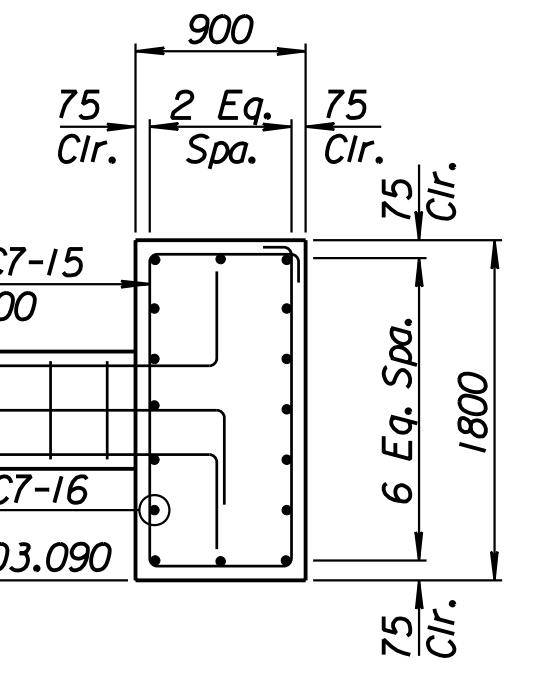
PLAN

TIE BACK REINFORCING STEEL							
Straight Bars			Bent Bars				
Mark	Size	Number	Length	Mark	Size	Number	Length
C7-16	*25	32	15 040	C7-13	*13	160	2740
				C7-14	*29	60	10 500
				C7-15	*13	94	5100

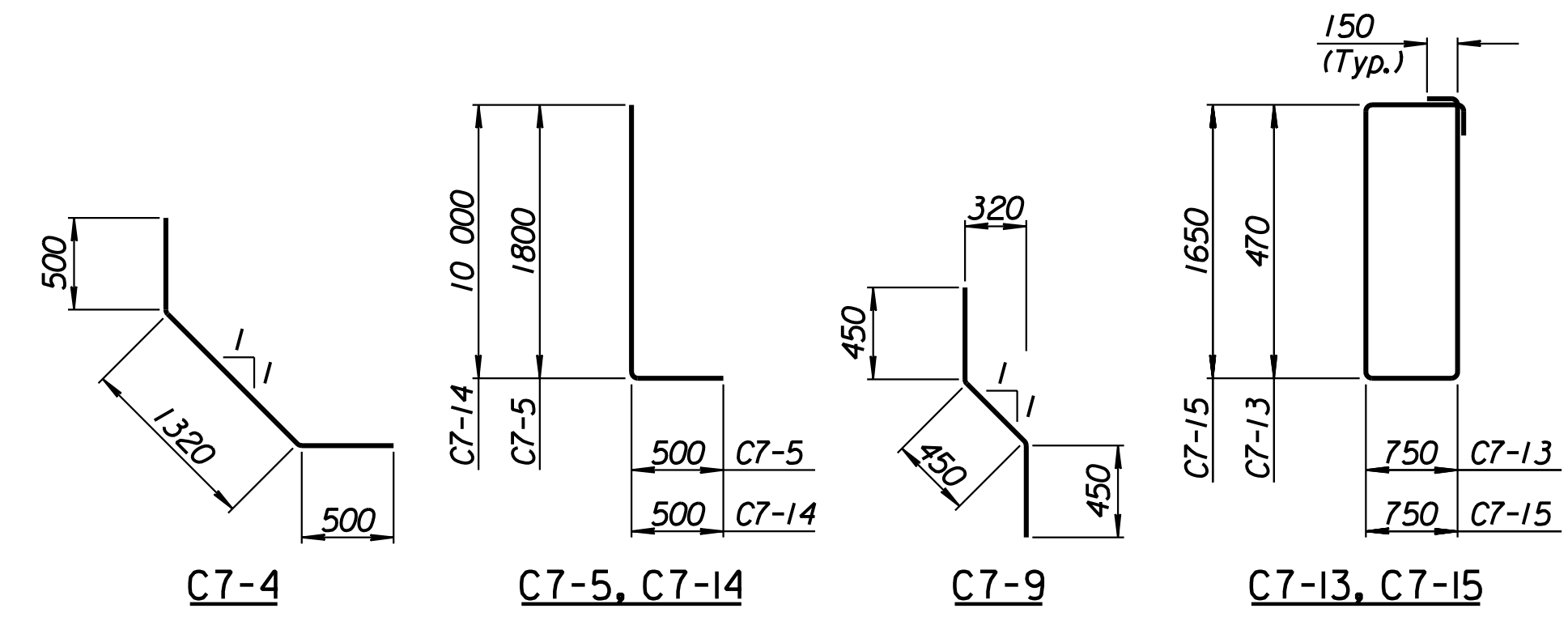
TIE BACK QUANTITIES		
Item	Quantity	Unit
Concrete (Grade 30)(AE)	72.4	m <sup>3</sup>
Reinforcing Steel (Grade 420)	6012	kg



SECTION A-A



SECTION B-B



BENDING DIAGRAMS  
All dimensions are out to out of bars.

RECORD DRAWING

1			
No.	Revisions	By	Date
CITY OF WICHITA			
<b>TYLER SOUTHEAST WALL</b>			
STA. 17+456.832 TO STA. 17+486.404			
SEDGWICK COUNTY			
<b>Professional Engineering Consultants, P.A.</b> 303 S. TOPEKA • WICHITA, KANSAS 67202 316-262-2691 • FAX 316-262-3003			
Designed by	P.D.F.	Checked by	R.A.S.
Drawn by	W.L.L.	Date	April 11, 2002
		Job No.	97362

Drawn by: wil 3-22-2002  
 Plotted by: drp 3-22-2002  
 I:/1997/97362/As-Built/dgn/s/Vol 2/Sh 342-Tyler-SEWall-3.dgn Last Rev: 8-23-07 Bjs: gdr