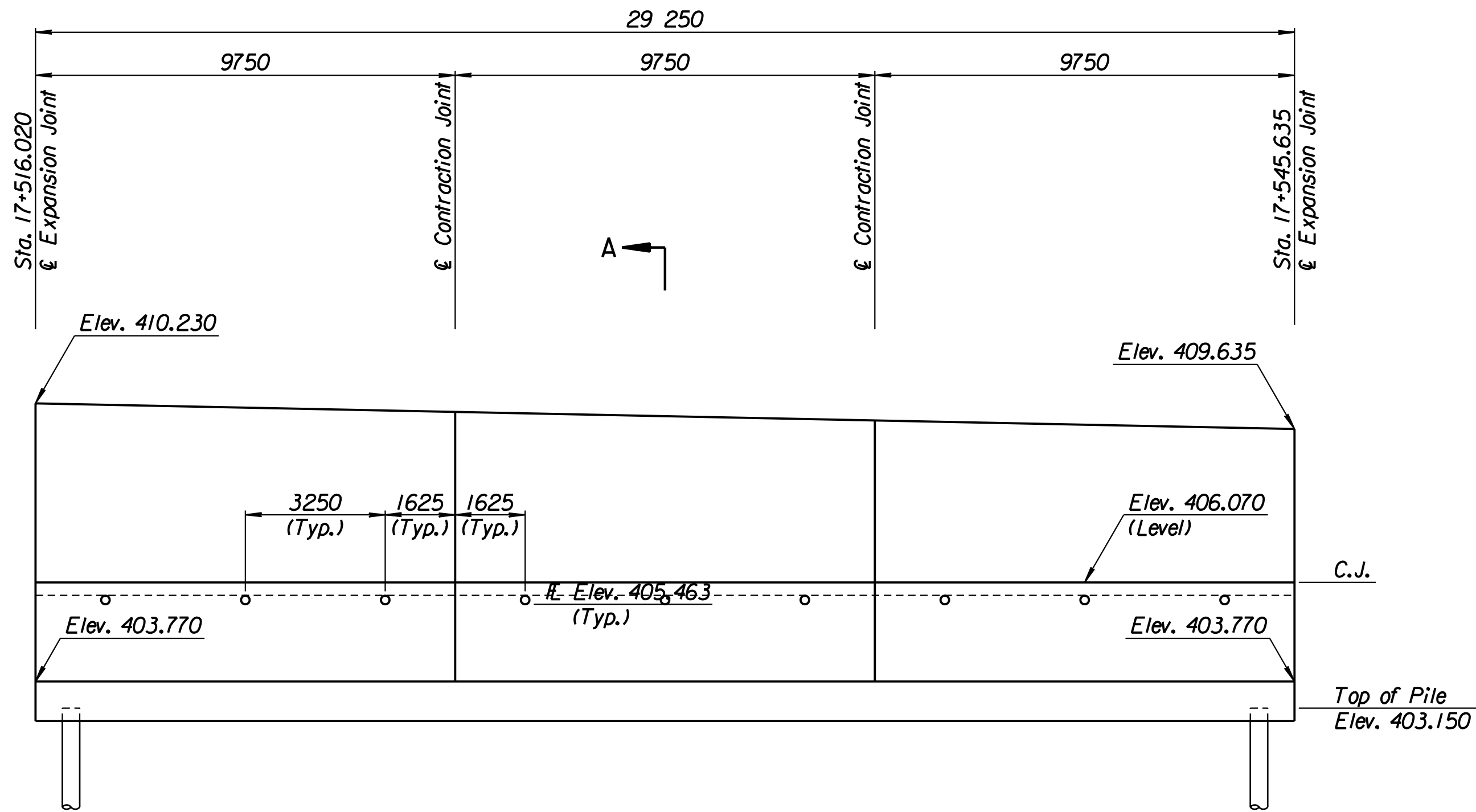


STATE	PROJECT NO.	YEAR	SHEET NO.	TOTAL SHEETS
KANSAS	54-87 K-6657-01	2002	344	1122

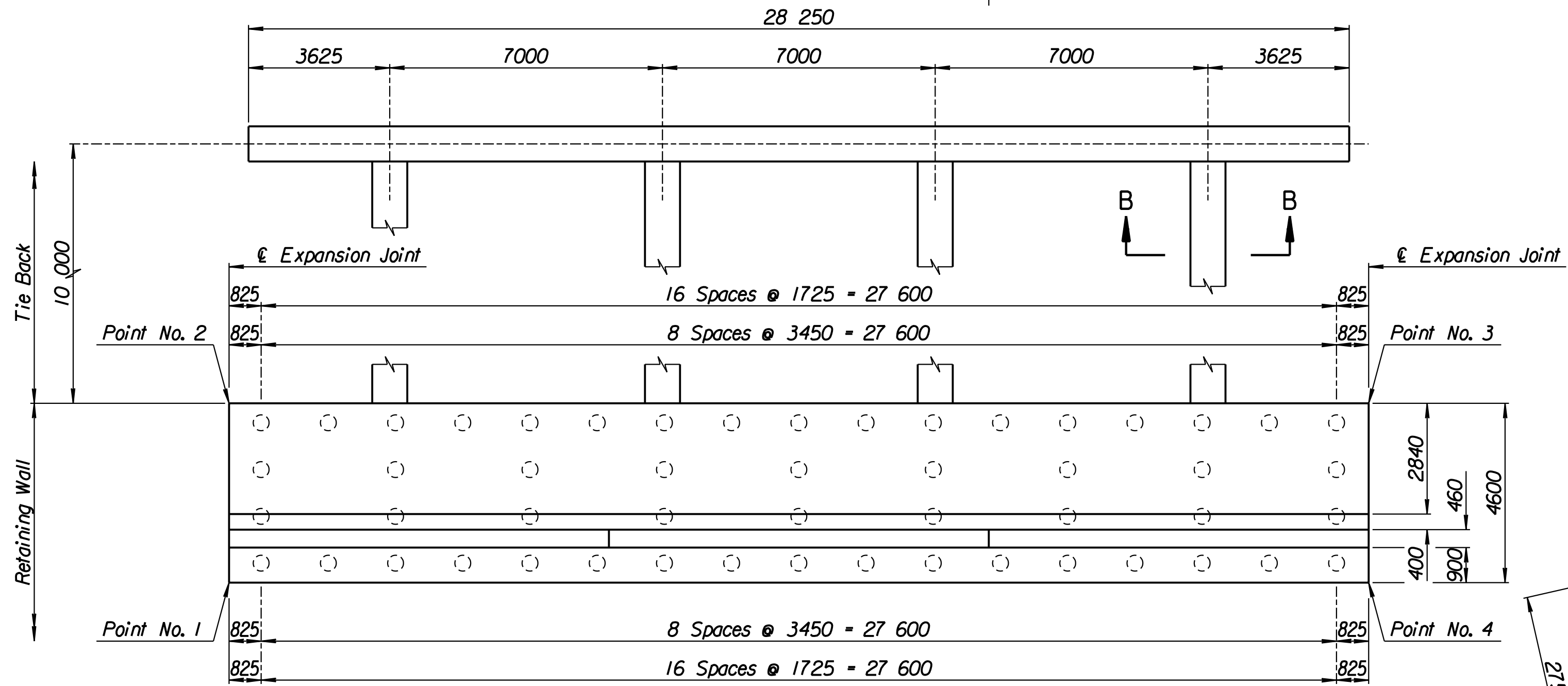
LAYOUT INFORMATION				
Point No.	North Coordinate	East Coordinate	Station	Offset
1	512063.260	493386.522	17+516.020	19.395 Rt.
2	512067.501	493384.741	17+516.020	14.795 Rt.
3	512078.589	493411.886	17+545.635	14.795 Rt.
4	512074.314	493413.583	17+545.635	19.395 Rt.

REINFORCING STEEL							
Straight Bars				Bent Bars			
Mark	Size	Number	Length	Mark	Size	Number	Length
E7-1	*25	246	4520	E7-3	*25	195	3160
E7-2	*25	60	15 540	E7-4	*19	195	2320
E7-6	*25	195	4350	E7-5	*25	195	1910
E7-7	*13	99	3510	E7-9	*19	99	1350
E7-8	*16	129	9650				
E7-10	*19	99	3410				
E7-11	*13	99	3510				
E7-12	*29	48	4000				

WALL QUANTITIES		
Item	Quantity	Unit
Pressure Grouted Pile (406 mm)	624.0	m
Concrete (Grade 30)(AE)	218.1	m ³
Reinforcing Steel (Grade 420)	21 079	kg
Class III Excavation	406.6	m ³



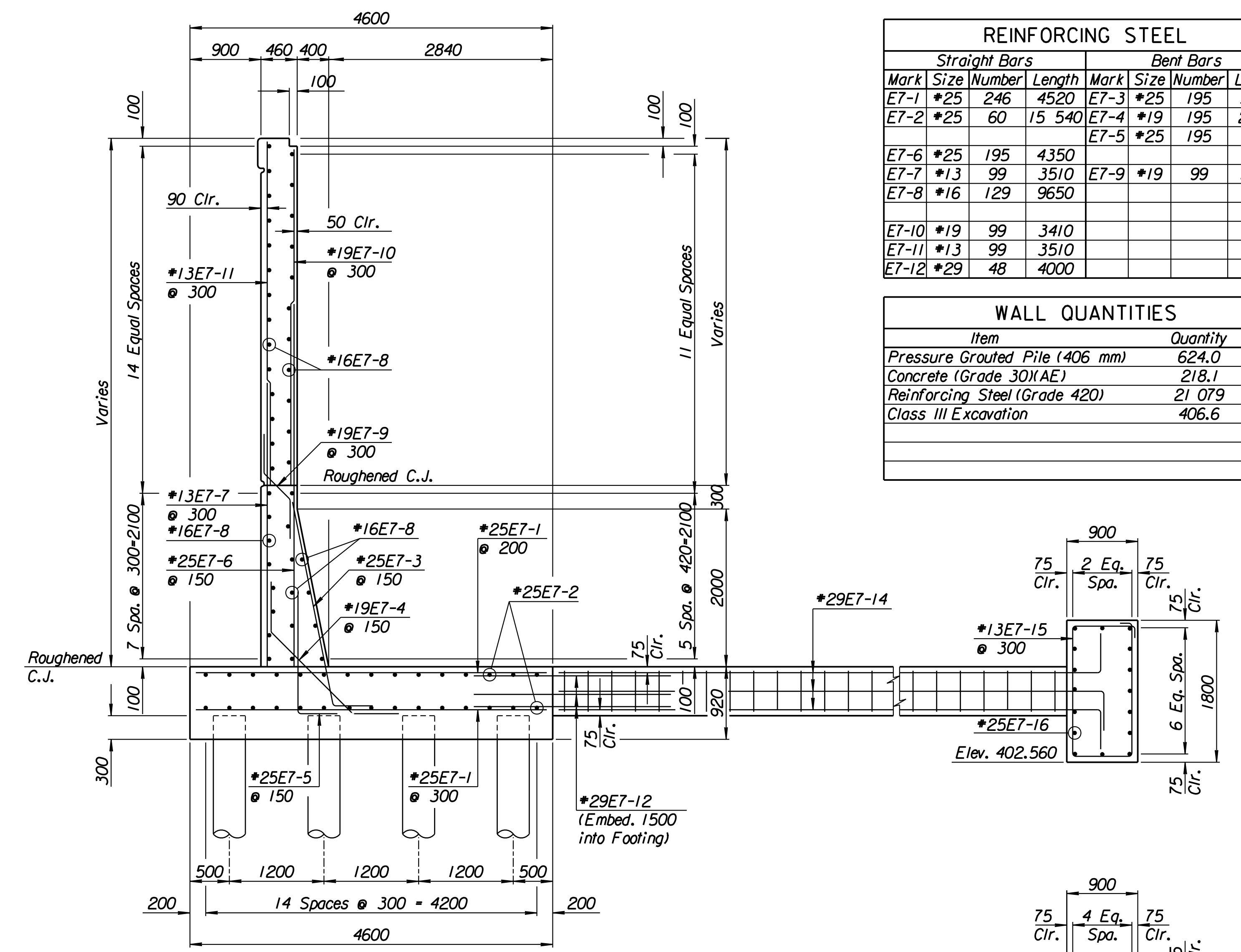
ELEVATION



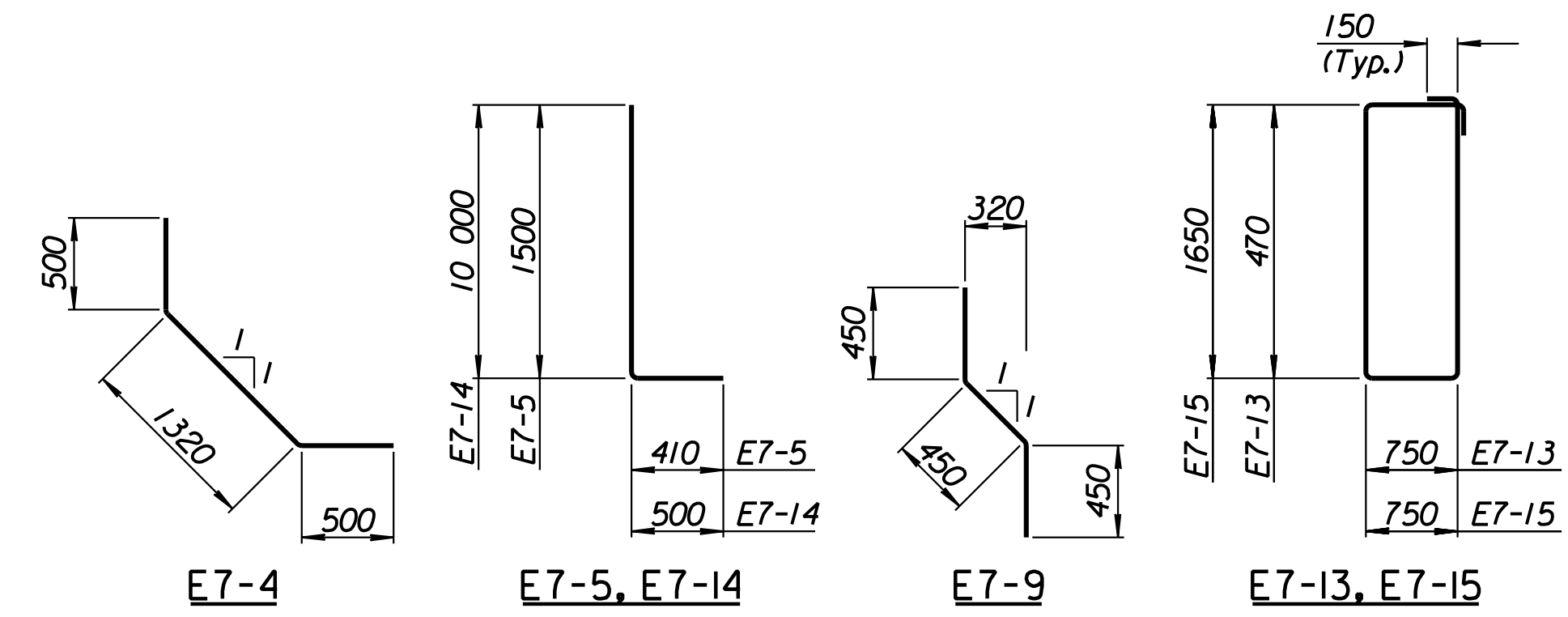
PLAN

TIE BACK REINFORCING STEEL							
Straight Bars			Bent Bars				
Mark	Size	Number	Length	Mark	Size	Number	Length
E7-16	*25	32	15 040	E7-13	*13	128	2740
				E7-14	*29	48	10 500
				E7-15	*13	94	5100

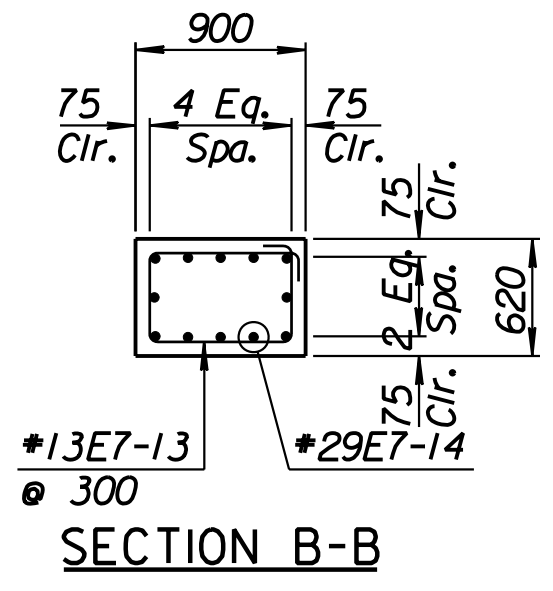
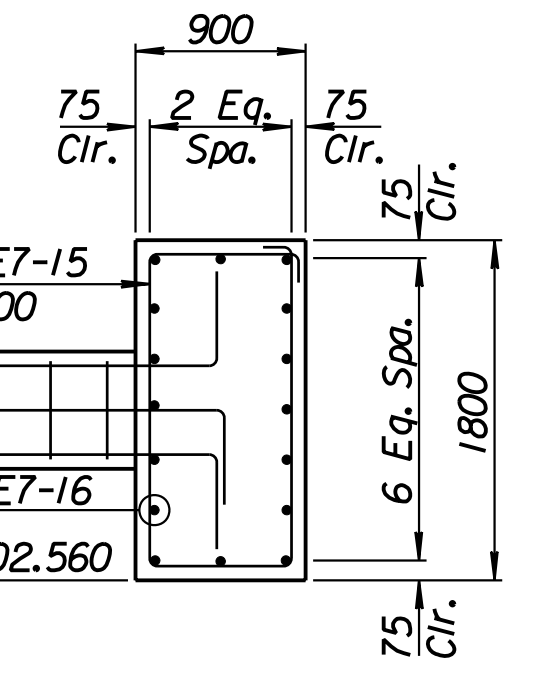
TIE BACK QUANTITIES		
Item	Quantity	Unit
Concrete (Grade 30)(AE)	67.1	m ³
Reinforcing Steel (Grade 420)	5288	kg



SECTION A-A



BENDING DIAGRAMS
All dimensions are out to out of bars.



SECTION B-B

1			
No.	Revisions	By	Date
CITY OF WICHITA			
TYLER SOUTHEAST WALL			
STA. 17+516.020 TO STA. 17+545.635			
SEDGWICK COUNTY			
Professional Engineering Consultants, P.A. 303 S. TOPEKA • WICHITA, KANSAS 67202 316-262-2691 • FAX 316-262-3003			
Designed by	P.D.F.	Checked by	R.A.S.
Drawn by	W.L.L.	Date	April 11, 2002
		Job No.	97362

Drawn by: wil 3-22-2002
 Plotted by: drp 3-22-2002
 I:/1997/97362/As-Built/dgn/s/Vol 2/Sh 344-Tyler-SEWall-5.dgn Last Rev: 8-23-07 By: gdr