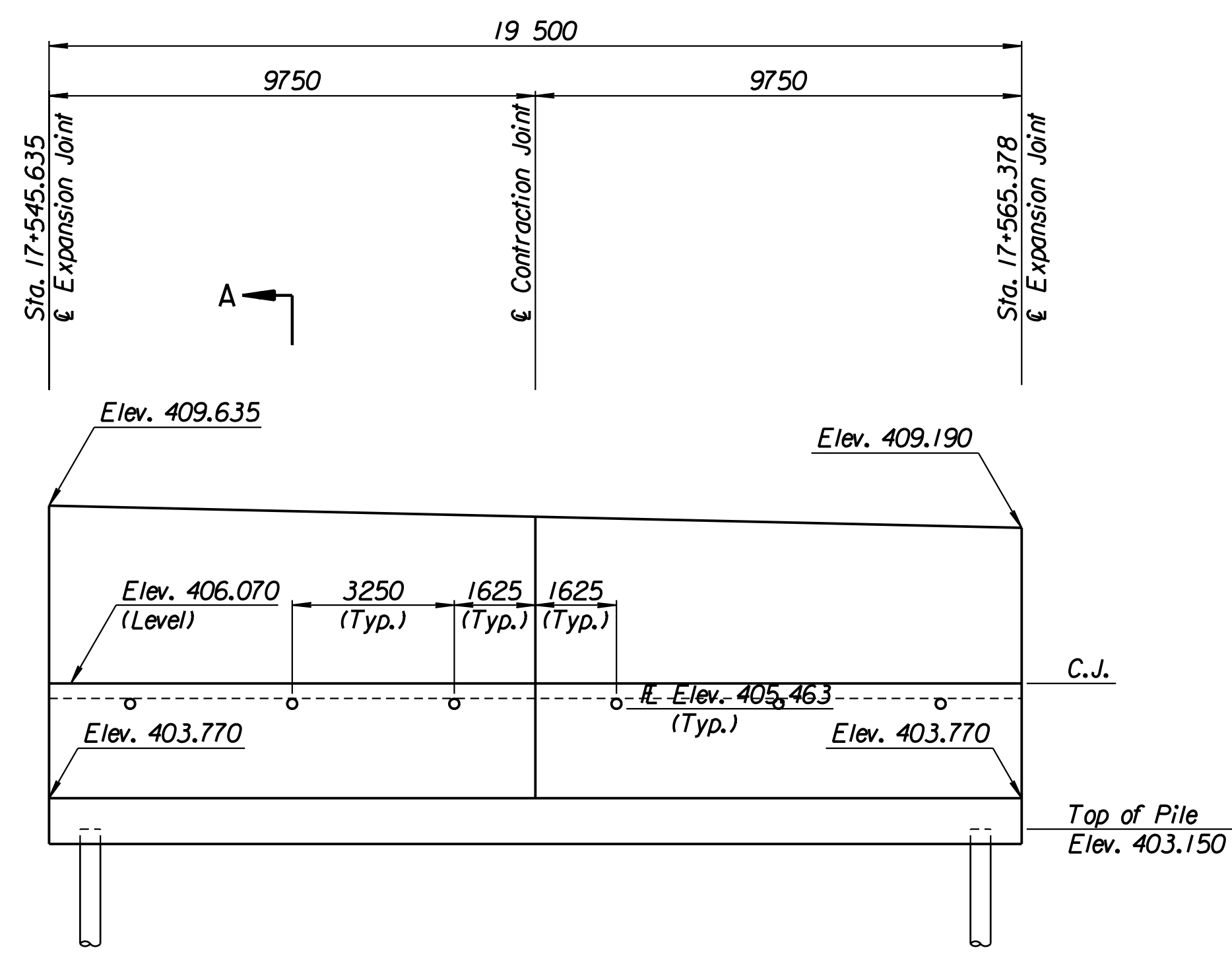


STATE	PROJECT NO.	YEAR	SHEET NO.	TOTAL SHEETS
KANSAS	54-87 K-6657-01	2002	345	1122

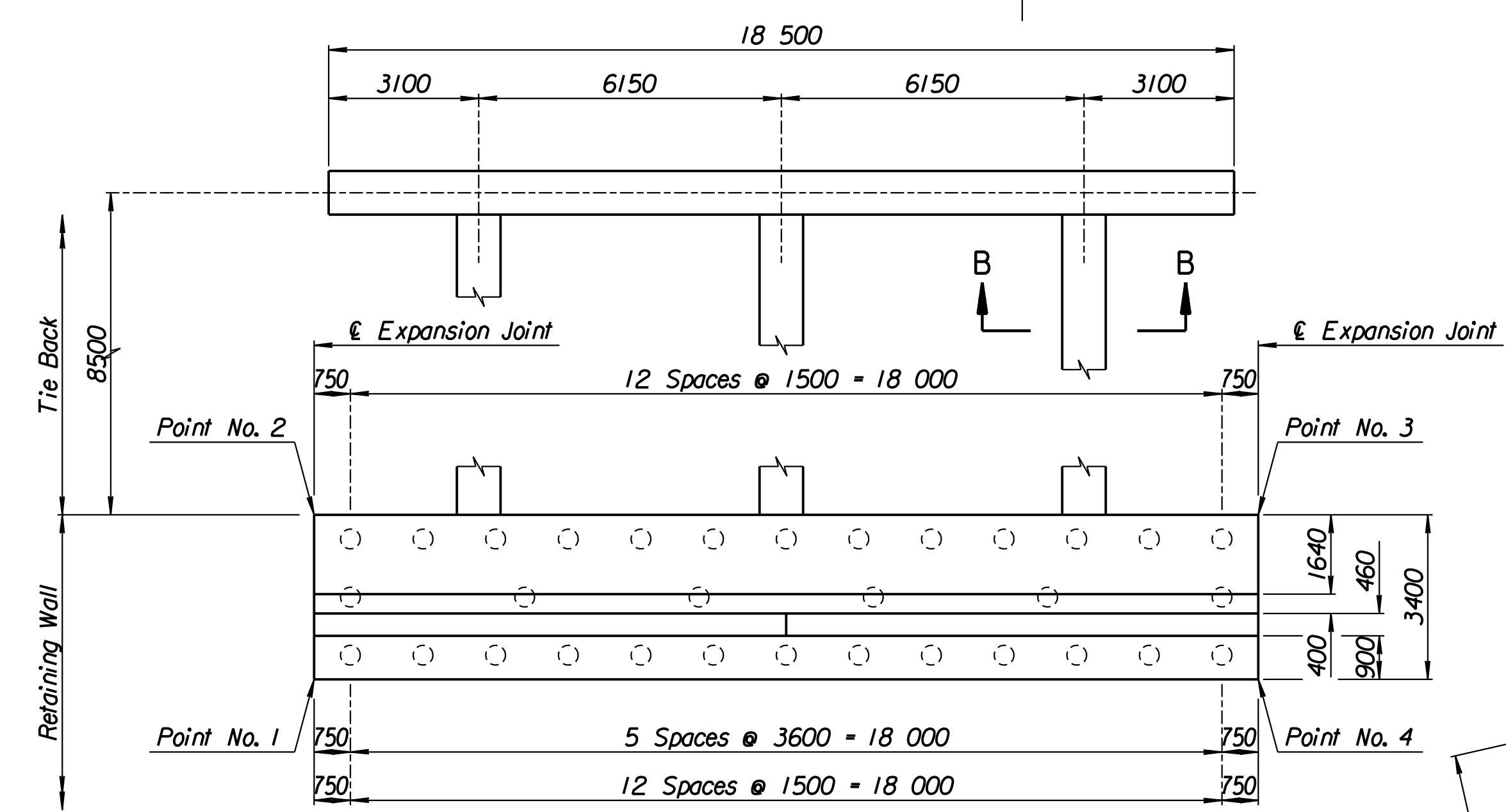
LAYOUT INFORMATION				
Point No.	North Coordinate	East Coordinate	Station	Offset
1	512074.314	493413.583	17+545.635	19.395 Rt.
2	512077.474	493412.329	17+545.635	15.995 Rt.
3	512084.561	493430.530	17+565.378	15.995 Rt.
4	512081.385	493431.743	17+565.378	19.395 Rt.

REINFORCING STEEL							
Straight Bars				Bent Bars			
Mark	Size	Number	Length	Mark	Size	Number	Length
F7-1	*25	164	3320	F7-3	*22	130	3110
F7-2	*25	44	10 670	F7-4	*22	66	2320
F7-6	*19	130	3660	F7-5	*19	130	1500
F7-7	*13	66	3360	F7-9	*16	66	1350
F7-8	*16	78	9650				
F7-10	*19	66	2970				
F7-11	*13	66	3070				
F7-12	*29	36	4000				

WALL QUANTITIES		
Item	Quantity	Unit
Pressure Grouted Pile (406 mm)	384.0	m
Concrete (Grade 30(AE))	119.2	m <sup>3</sup>
Reinforcing Steel (Grade 420)	10 118	kg
Class III Excavation	205.3	m <sup>3</sup>



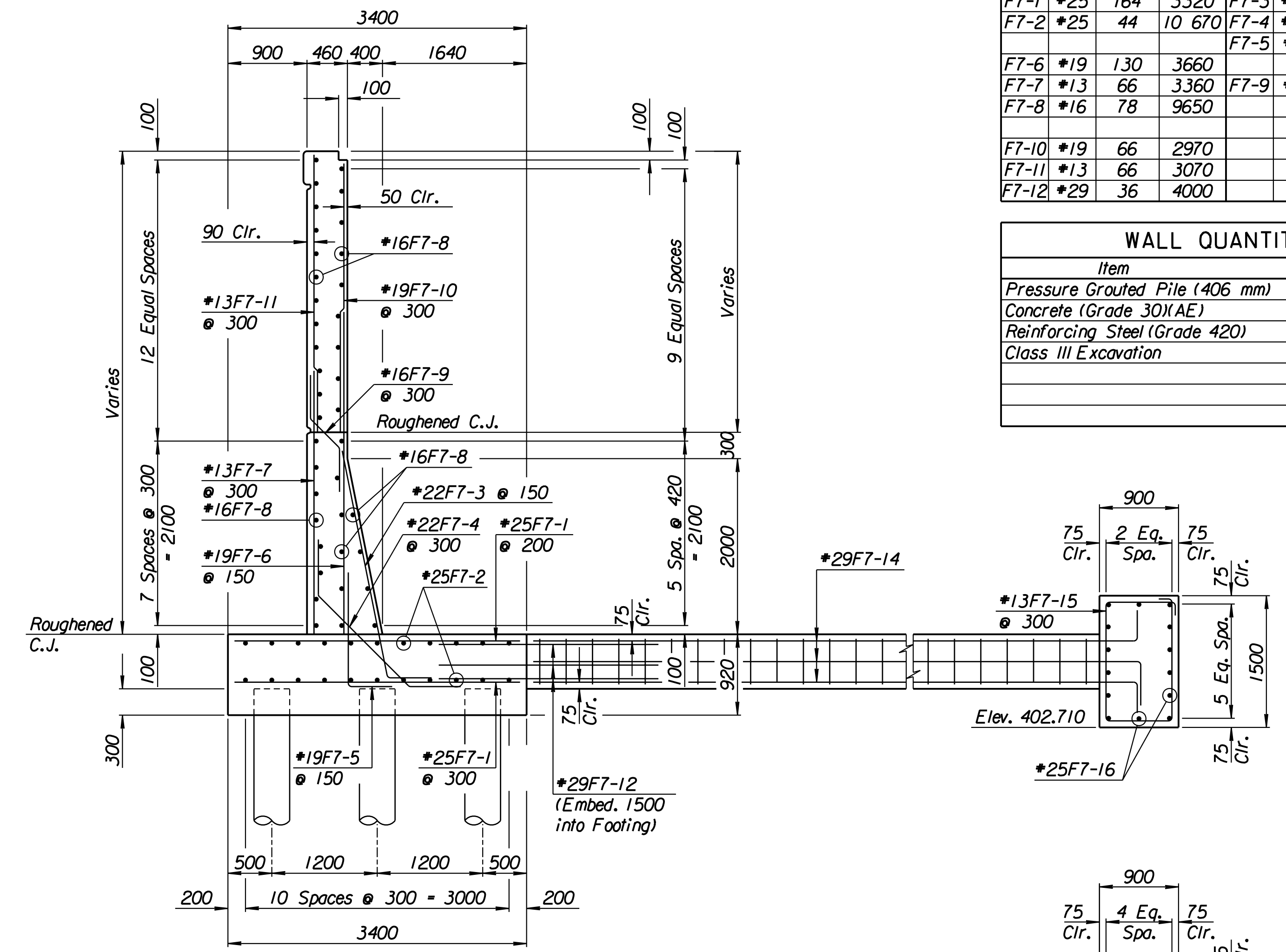
ELEVATION



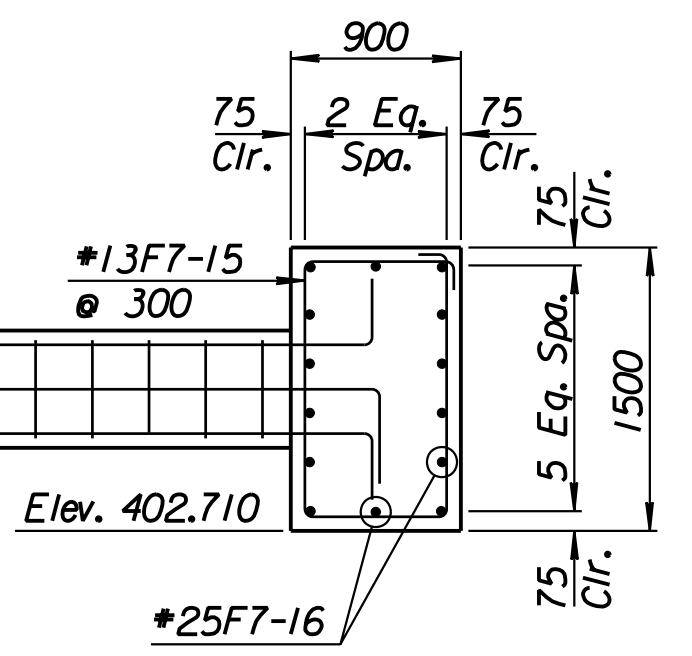
PLAN

TIE BACK REINFORCING STEEL							
Straight Bars			Bent Bars				
Mark	Size	Number	Length	Mark	Size	Number	Length
F7-16	*25	28	10 170	F7-13	*13	81	2740
				F7-14	*29	36	9000
				F7-15	*13	63	4500

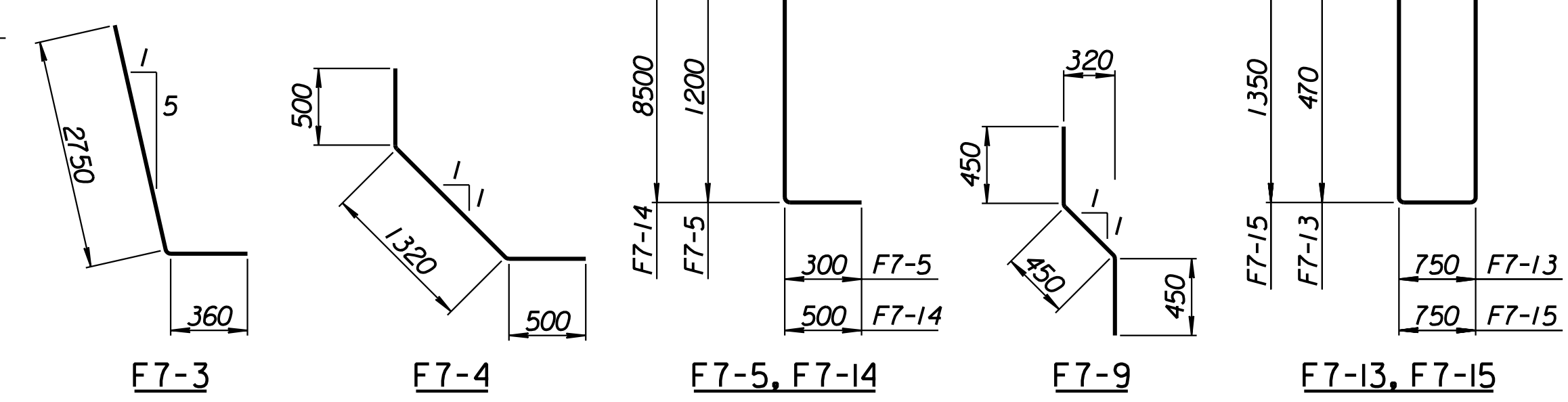
TIE BACK QUANTITIES		
Item	Quantity	Unit
Concrete (Grade 30(AE))	38.5	m <sup>3</sup>
Reinforcing Steel (Grade 420)	3273	kg



SECTION A-A



SECTION B-B



BENDING DIAGRAMS  
All dimensions are out to out of bars.

RECORD DRAWING

1			
No.	Revisions	By	Date
CITY OF WICHITA			
<b>TYLER SOUTHEAST WALL</b>			
STA. 17+545.635 TO STA. 17+565.378			
SEDGWICK COUNTY			
<b>Professional Engineering Consultants, P.A.</b> 303 S. TOPEKA • WICHITA, KANSAS 67202 316-262-2691 • FAX 316-262-3003			
Designed by	P.D.F.	Checked by	R.A.S.
Drawn by	W.L.L.	Date	April 11, 2002
		Job No.	97362

Drawn by: wil 3-22-2002  
 Plotted by: drp 3-22-2002  
 I:/1997/97362/As-Built/dgn/s/Vol 2/Sh 345-Tyler-SEWall-6.dgn Last Rev: 8-23-07 By: gdr