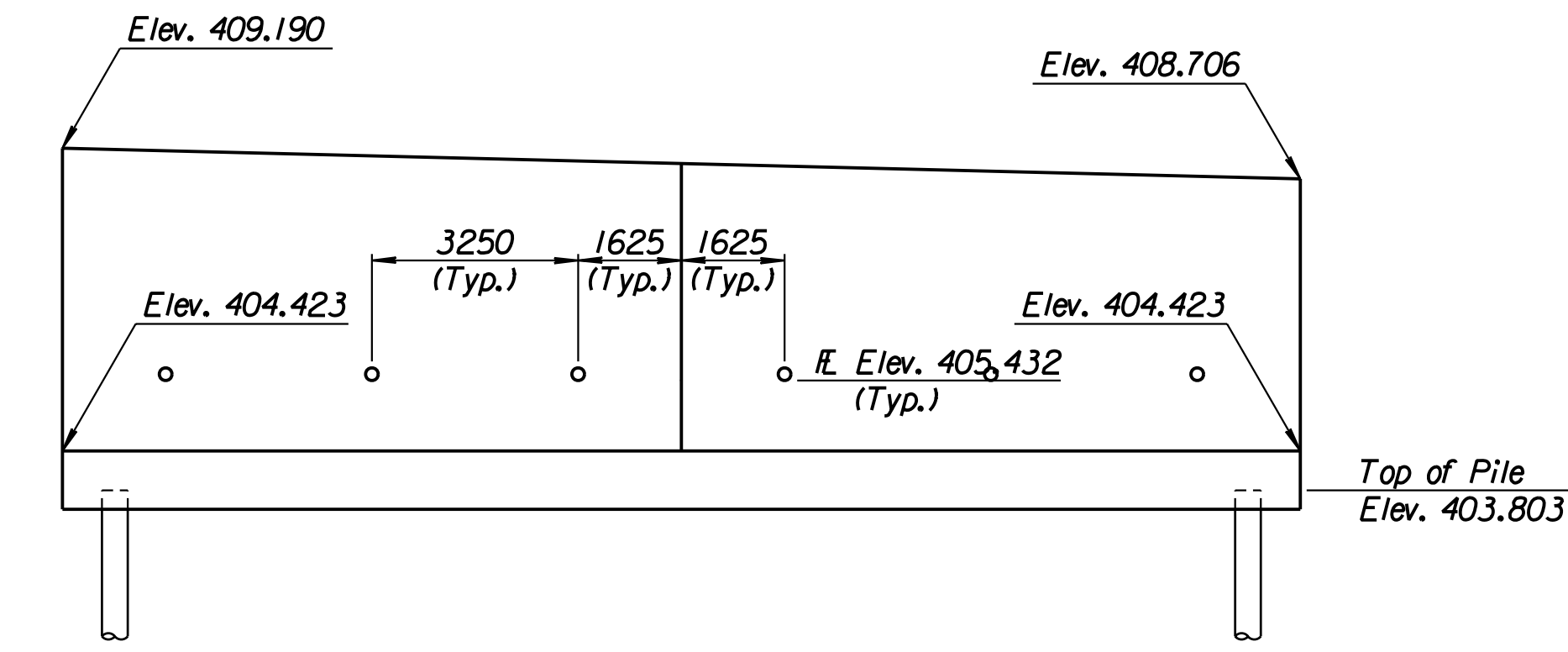
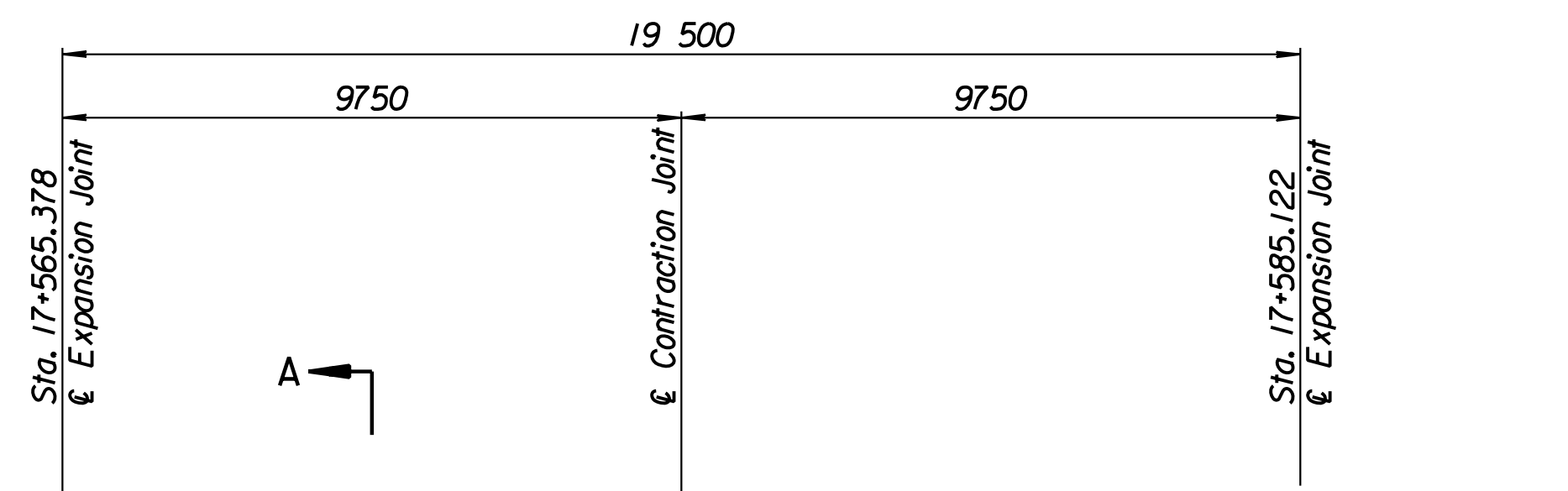


STATE	PROJECT NO.	YEAR	SHEET NO.	TOTAL SHEETS
KANSAS	54-87 K-6657-01	2002	346	1122

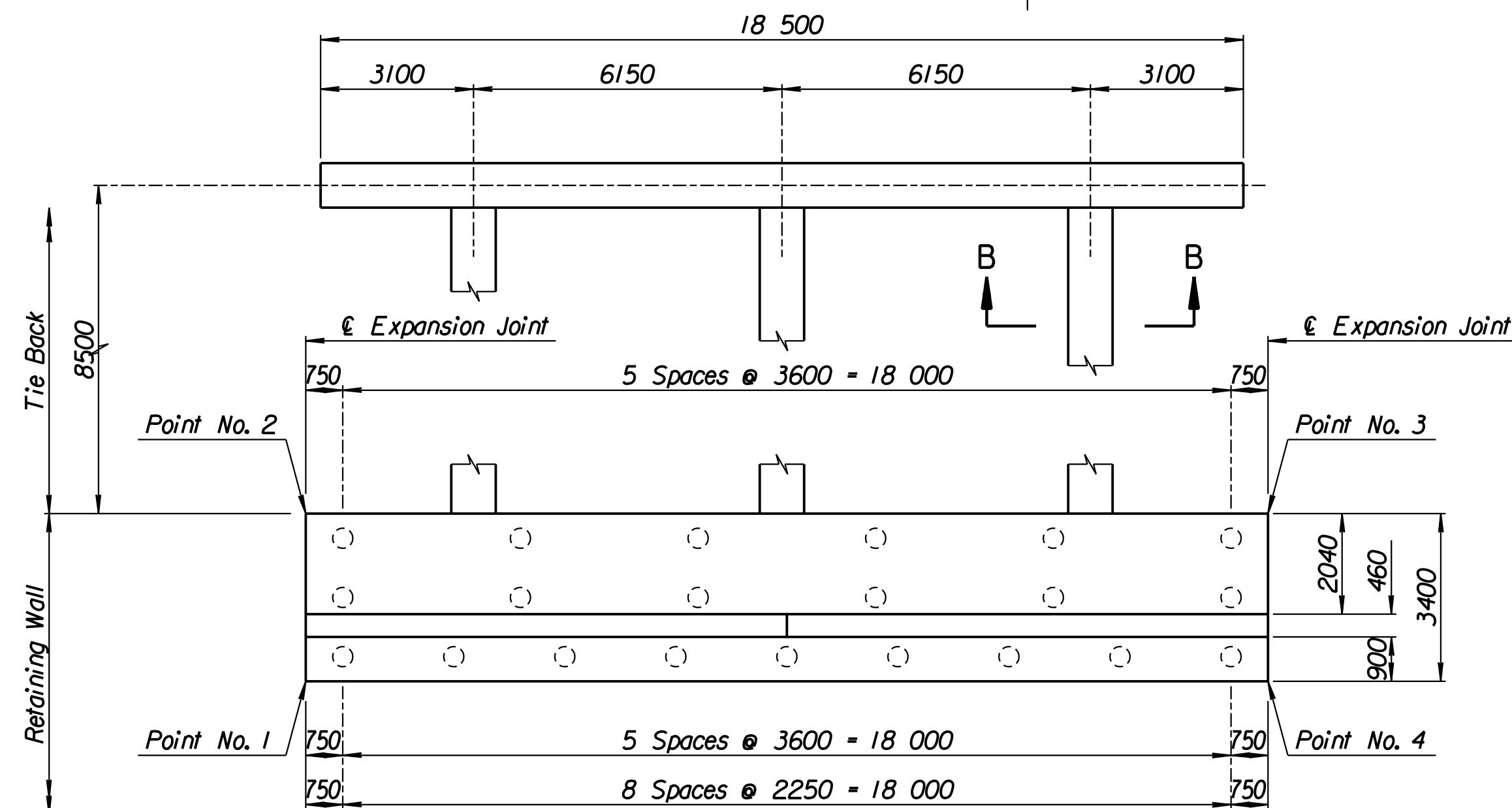
LAYOUT INFORMATION				
Point No.	North Coordinate	East Coordinate	Station	Offset
1	512081.385	493431.743	17+565.378	19.395 Rt.
2	512084.561	493430.530	17+565.378	15.995 Rt.
3	512091.409	493448.824	17+585.122	15.995 Rt.
4	512088.217	493449.994	17+585.122	19.395 Rt.

REINFORCING STEEL							
Straight Bars				Bent Bars			
Mark	Size	Number	Length	Mark	Size	Number	Length
G7-1	*25	164	3320	G7-3	*25	130	2890
G7-2	*25	44	10 670	G7-4	*19	66	1970
G7-5	*16	60	9650				
G7-6	*19	66	4130				
G7-7	*13	66	4710				
G7-8	*29	36	4000				

WALL QUANTITIES		
Item	Quantity	Unit
Pressure Grouted Pile (406 mm)	252.0	m
Concrete (Grade 30)(AE)	101.4	m ³
Reinforcing Steel (Grade 420)	8357	kg
Class III Excavation	150.1	m ³



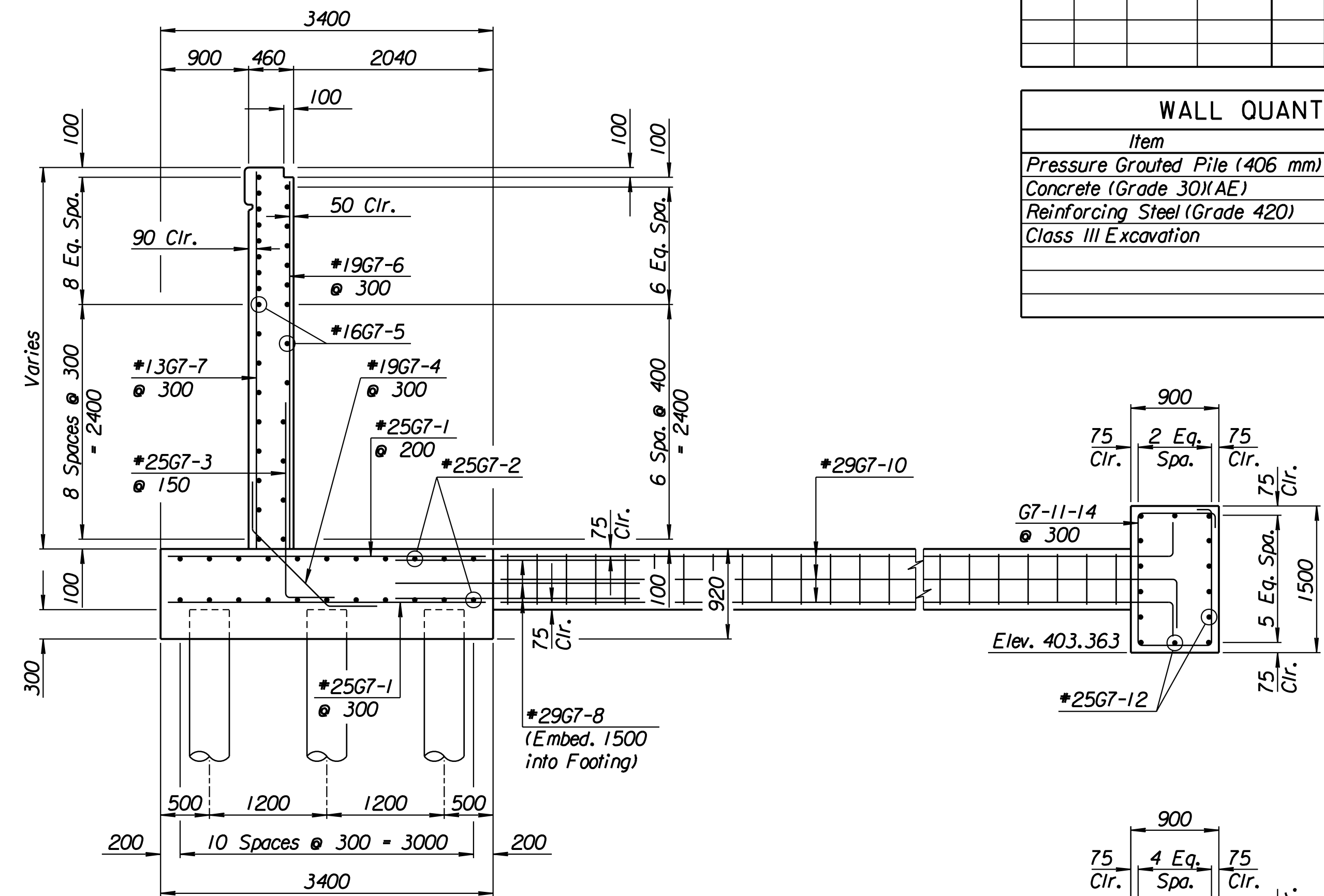
ELEVATION



PLAN

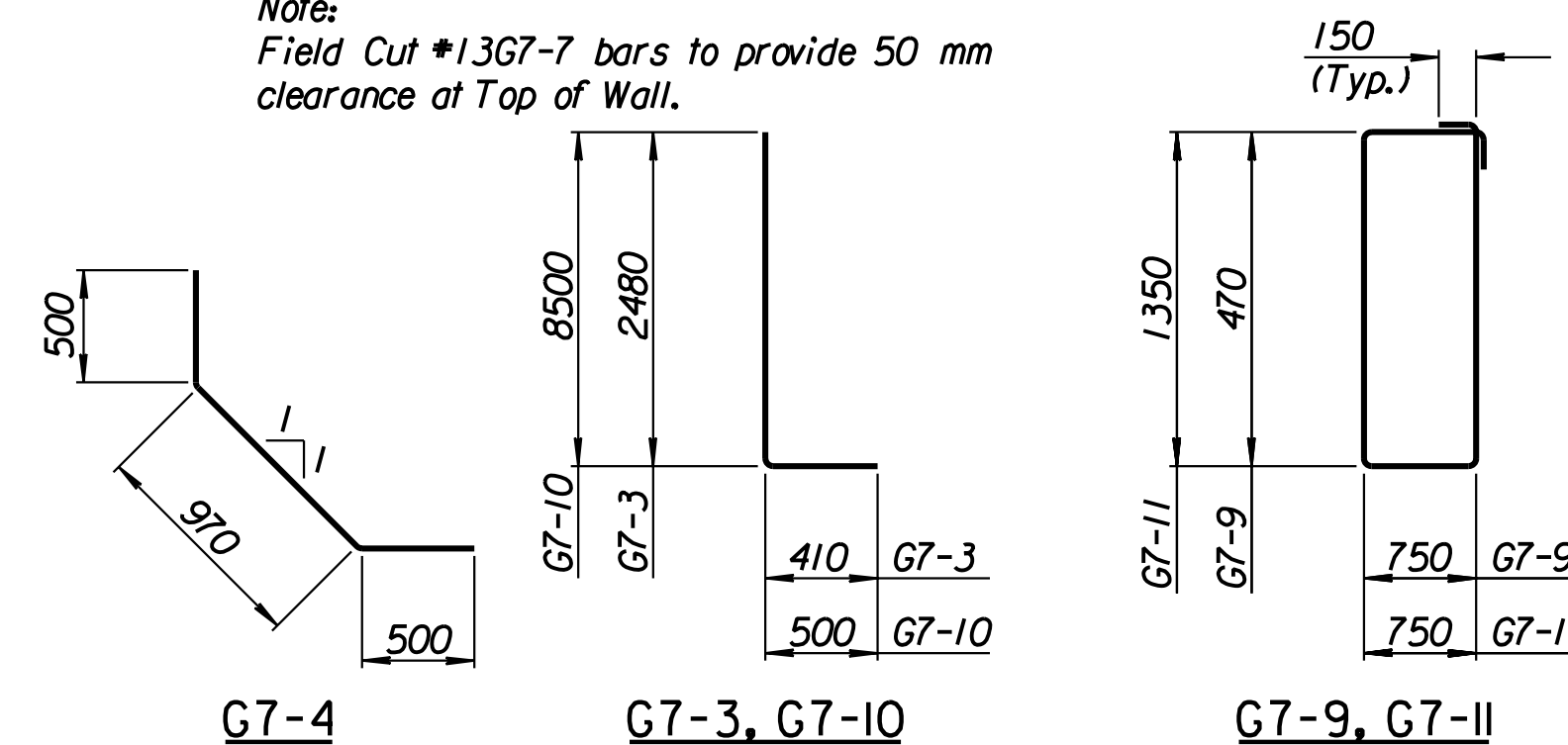
TIE BACK REINFORCING STEEL							
Straight Bars			Bent Bars				
Mark	Size	Number	Length	Mark	Size	Number	Length
G7-12	*25	28	10 170	G7-9	*13	81	2740
				G7-10	*29	36	9000
				G7-11	*13	63	4500

TIE BACK QUANTITIES		
Item	Quantity	Unit
Concrete (Grade 30)(AE)	38.5	m ³
Reinforcing Steel (Grade 420)	3273	kg



SECTION A-A

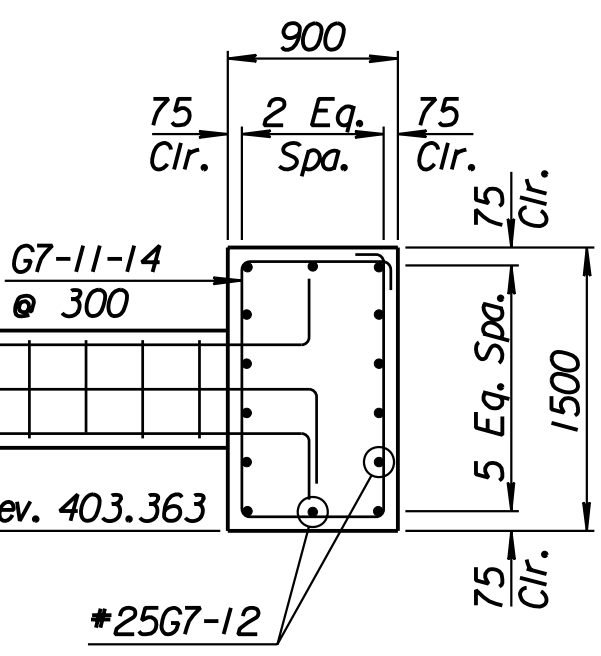
Note:
Field Cut #13G7-7 bars to provide 50 mm clearance at Top of Wall.



BENDING DIAGRAMS

All dimensions are out to out of bars.

RECORD DRAWING



SECTION B-B

1			
No.	Revisions	By	Date
CITY OF WICHITA			
TYLER SOUTHEAST WALL			
STA. 17+565.378 TO STA. 17+585.122			
SEDGWICK COUNTY			
Professional Engineering Consultants, P.A. 303 S. TOPEKA • WICHITA, KANSAS 67202 316-262-2691 • FAX 316-262-3003			
Designed by	P.D.F.	Checked by	R.A.S.
Drawn by	W.L.L.	Date	April, 2002
		Job No.	97362

Drawn by: wil
 Plotted by: drp
 3-22-2002
 I:\1997\97362\As-Builts\dgn\Vol 2\Sh 346-Tyler-SEWall-7.dgn Last Rev: B-23-07 By: gdr