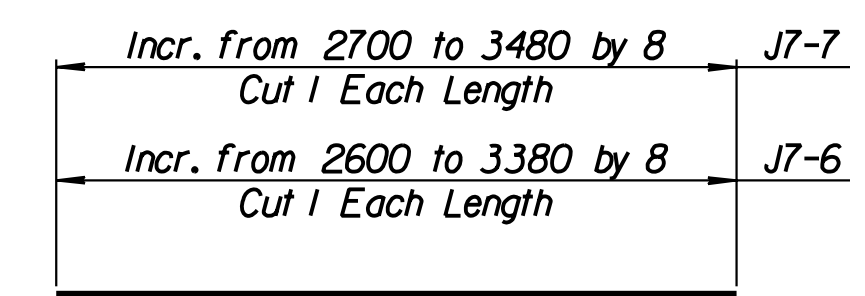
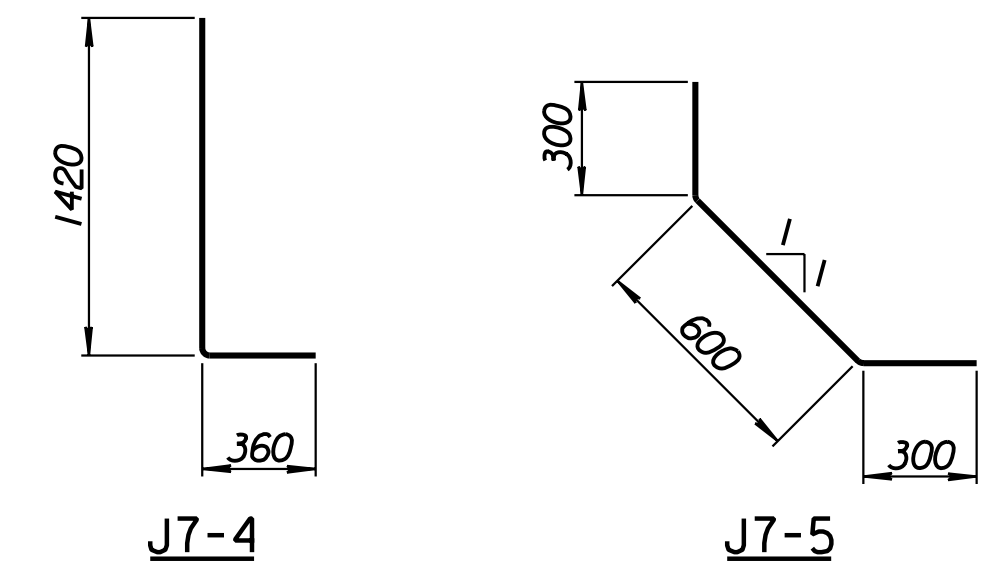


STATE	PROJECT NO.	YEAR	SHEET NO.	TOTAL SHEETS
KANSAS	54-87 K-6657-01	2002	348	1122

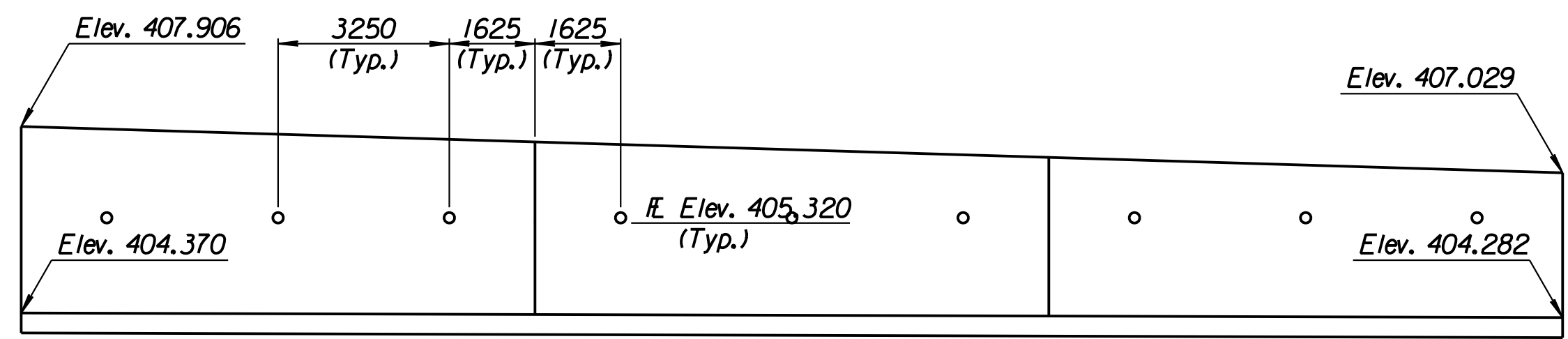
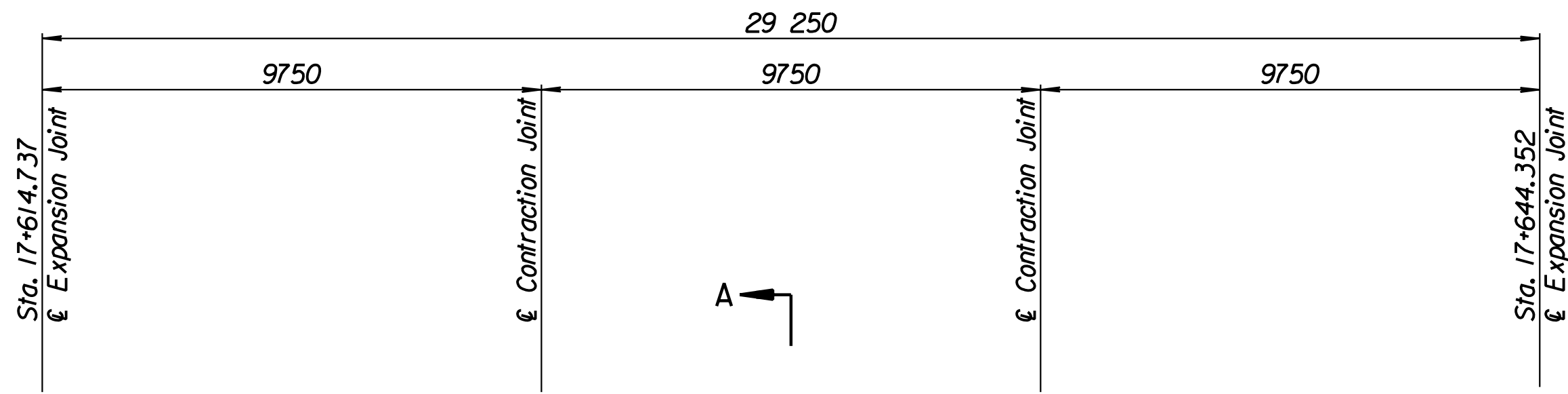
LAYOUT INFORMATION				
Point No.	North Coordinate	East Coordinate	Station	Offset
1	512098.013	493477.536	17+614.737	19.395 Rt.
2	512102.362	493476.037	17+614.737	14.795 Rt.
3	512111.640	493503.853	17+644.352	14.795 Rt.
4	512107.263	493505.265	17+644.352	19.395 Rt.

REINFORCING STEEL							
Straight Bars				Bent Bars			
Mark	Size	Number	Length	Mark	Size	Number	Length
J7-1	*16	99	4520	J7-4	*22	195	1780
J7-2	*22	147	4520	J7-5	*16	99	1200
J7-3	*13	60	14 960				
J7-6	*16	99	Varies				
J7-7	*13	99	Varies				
J7-8	*13	69	9650				

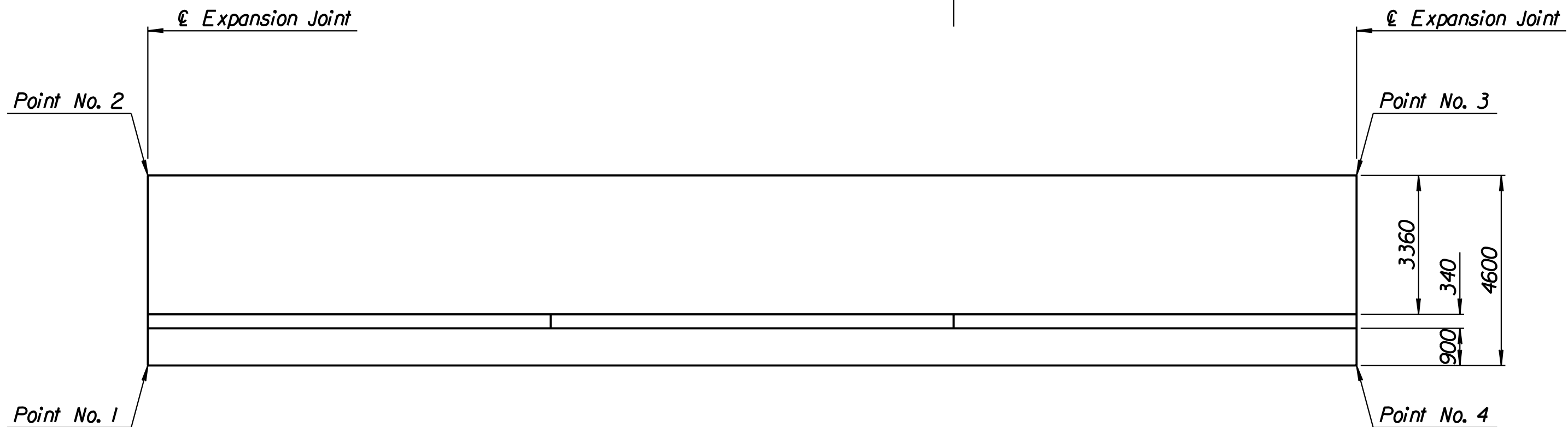
WALL QUANTITIES		
Item	Quantity	Unit
Concrete (Grade 30)(AE)	82.1	m ³
Reinforcing Steel (Grade 420)	6274	kg
Class III Excavation	215.0	m ³



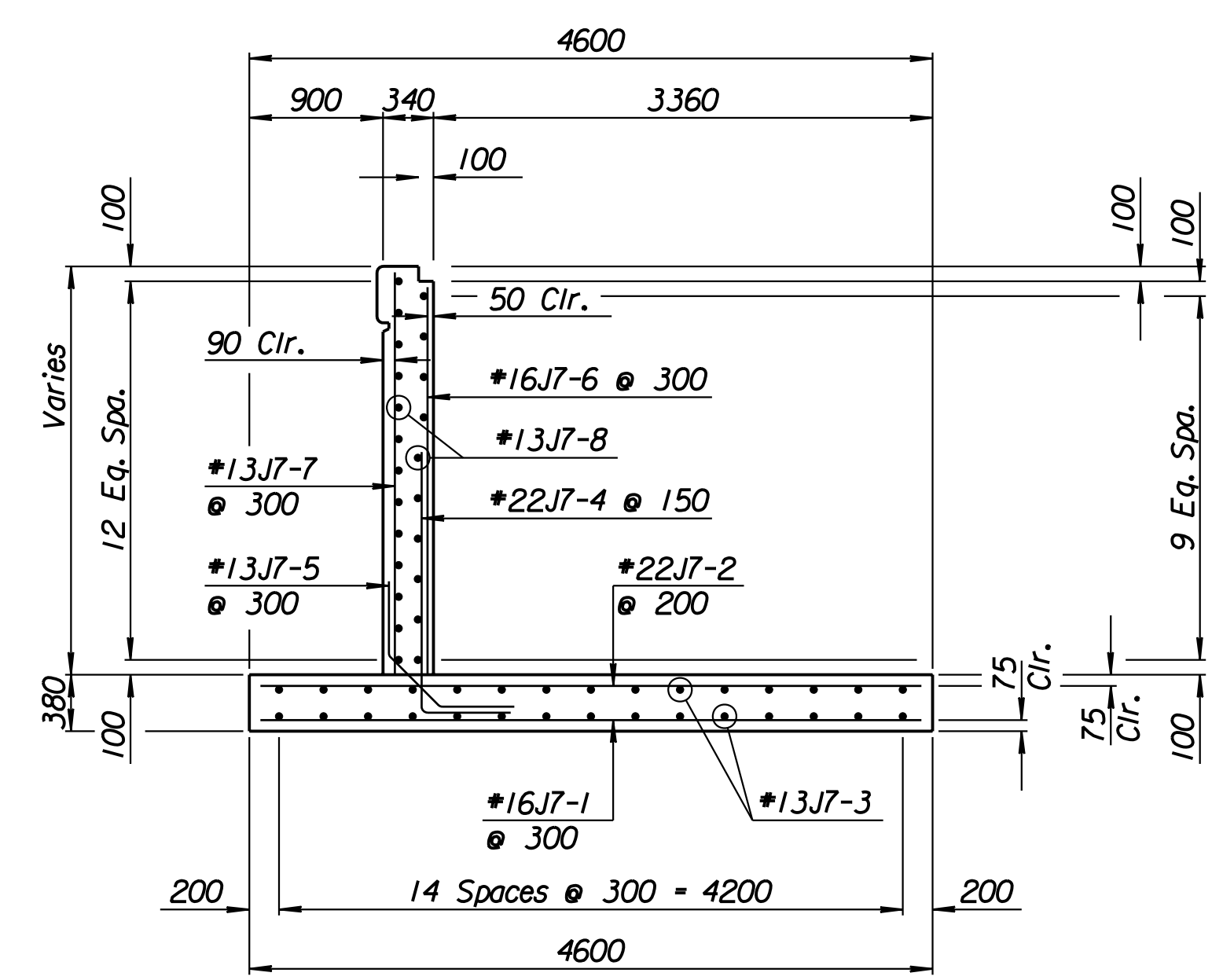
BENDING DIAGRAMS
All dimensions are out to out of bars.



ELEVATION



PLAN



SECTION A-A

Drawn by: wil
 Plotted by: drp
 3-22-2002
 I:/1997/97362/As-Builts/dgn/s/Vol 2/Sh 348-Tyler-SEWall-9.dgn Last Rev: 8-23-07 By: gdr

1			
No.	Revisions	By	Date
CITY OF WICHITA			
TYLER SOUTHEAST WALL			
STA. 17+614.737 TO STA. 17+644.352			
SEDGWICK COUNTY			
Professional Engineering Consultants, P.A. 303 S. TOPEKA • WICHITA, KANSAS 67202 316-262-2691 • FAX 316-262-3003			
Designed by	P.D.F.	Checked by	R.A.S.
Drawn by	W.L.L.	Date	April 11, 2002
		Job No.	97362

RECORD DRAWING