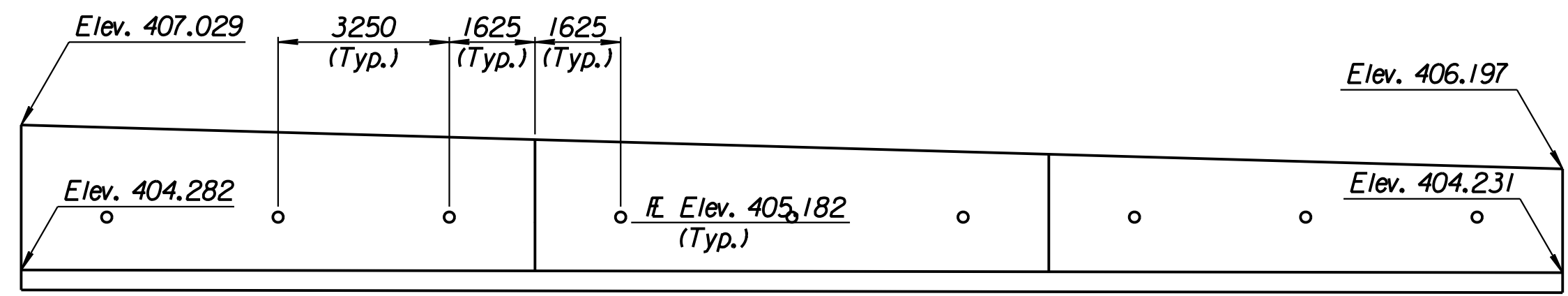
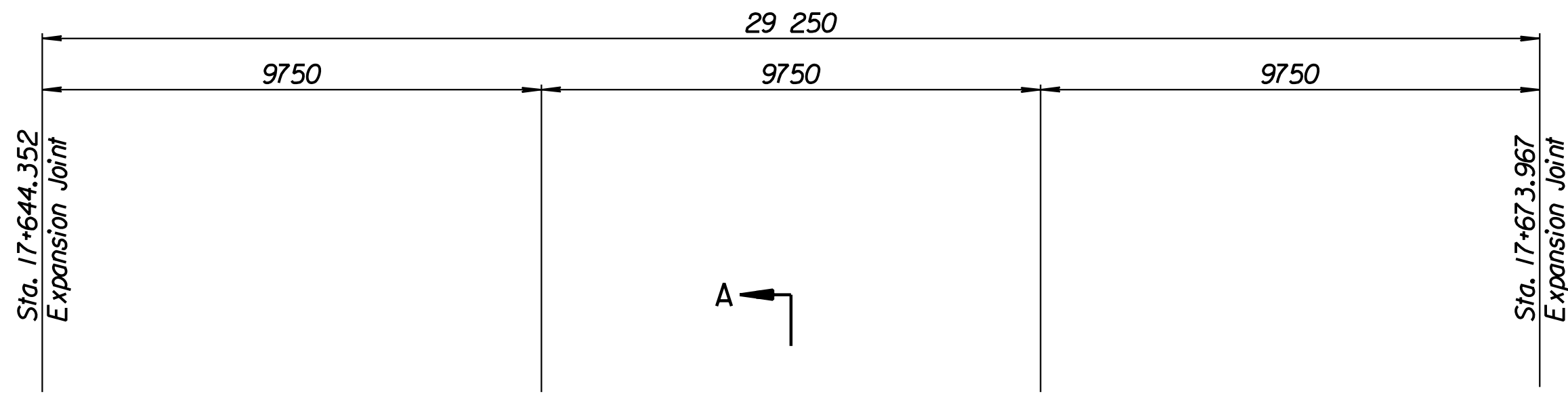


STATE	PROJECT NO.	YEAR	SHEET NO.	TOTAL SHEETS
KANSAS	54-87 K-6657-01	2002	349	1122

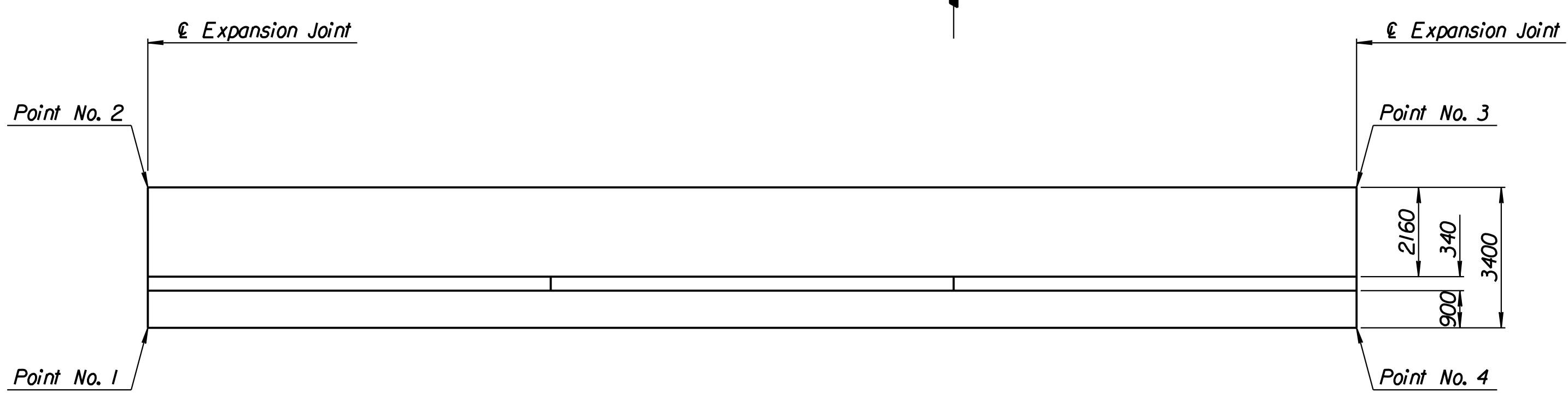
LAYOUT INFORMATION				
Point No.	North Coordinate	East Coordinate	Station	Offset
1	512107.263	493505.265	17+644.352	19.395 Rt.
2	512110.498	493504.221	17+644.352	15.995 Rt.
3	512119.219	493532.192	17+673.967	15.995 Rt.
4	512115.963	493533.172	17+673.967	19.395 Rt.

REINFORCING STEEL							
Straight Bars				Bent Bars			
Mark	Size	Number	Length	Mark	Size	Number	Length
K7-1	*16	246	3320	K7-3	*16	195	1350
K7-2	*13	44	14 960	K7-4	*13	99	1200
K7-5	*16	99	Varies				
K7-6	*13	99	Varies				
K7-7	*13	54	9650				

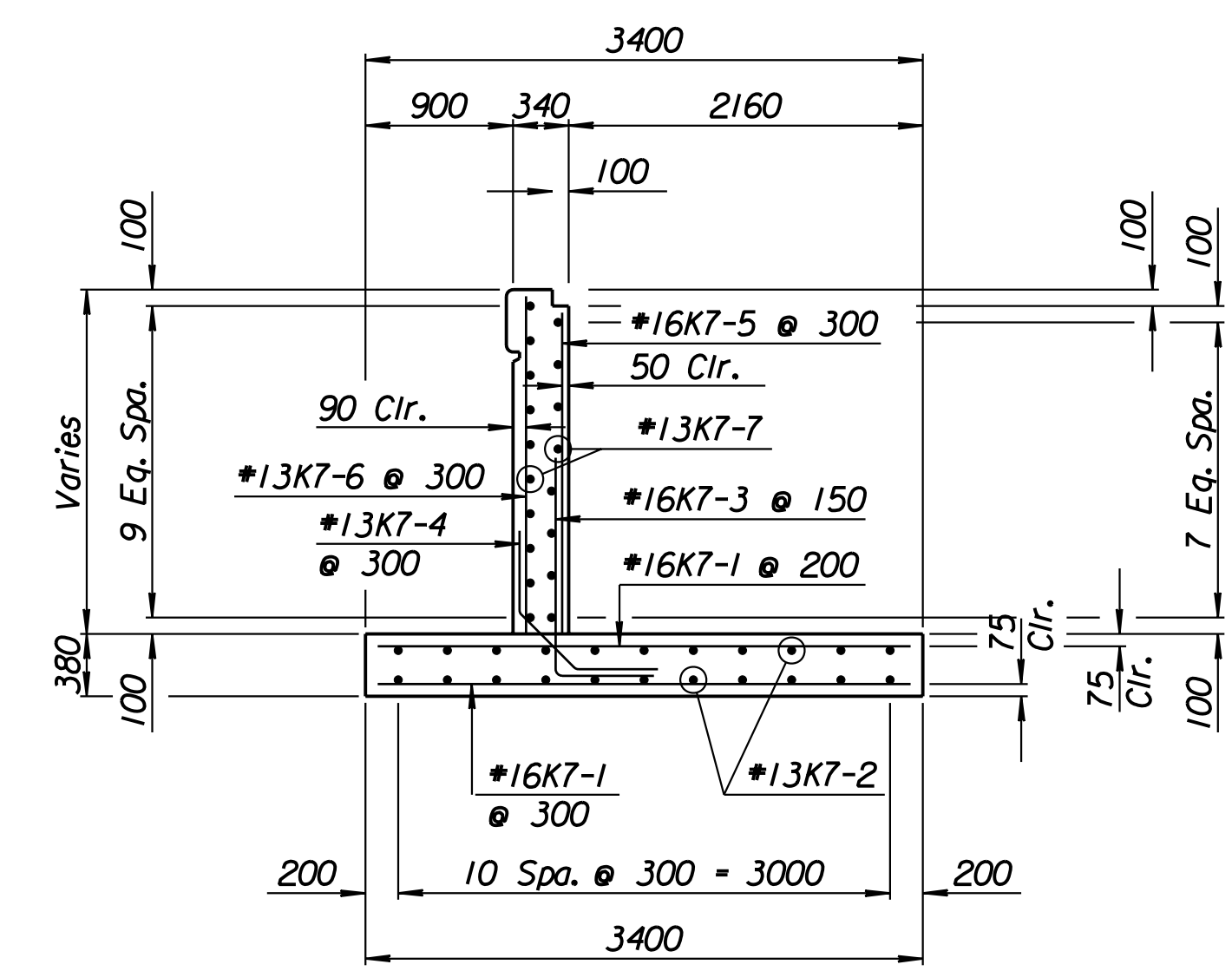
WALL QUANTITIES		
Item	Quantity	Unit
Concrete (Grade 30)(AE)	60.9	m ³
Reinforcing Steel (Grade 420)	3531	kg
Class III Excavation	177.7	m ³



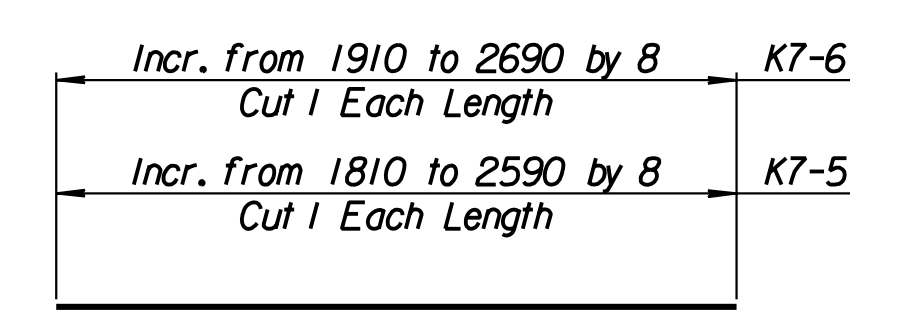
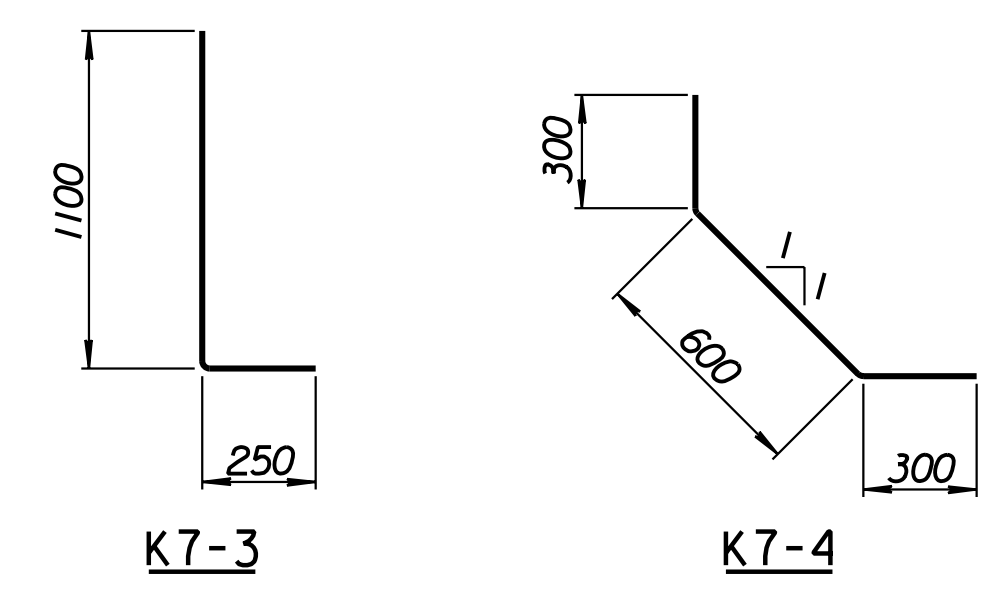
ELEVATION



PLAN



SECTION A-A



BENDING DIAGRAMS
All dimensions are out to out of bars.

Drawn by: wil 3-22-2002
 Plotted by: drp 3-22-2002
 I:/1997/97362/As-Built/dgn/s/Vol 2/Sh 349-Tyler-SEWall-I.dgn Last Rev: 8-23-07 By: gdr

1			
No.	Revisions	By	Date
CITY OF WICHITA			
TYLER SOUTHEAST WALL STA. 17+644.352 TO STA. 17+673.967 SEDGWICK COUNTY			
Professional Engineering Consultants, P.A. <small>303 S. TOPEKA • WICHITA, KANSAS 67202 316-262-2691 • FAX 316-262-3003</small>			
Designed by	P.D.F.	Checked by	R.A.S.
Drawn by	W.L.L.	Date	April, 2002 Job No. 97362

RECORD DRAWING