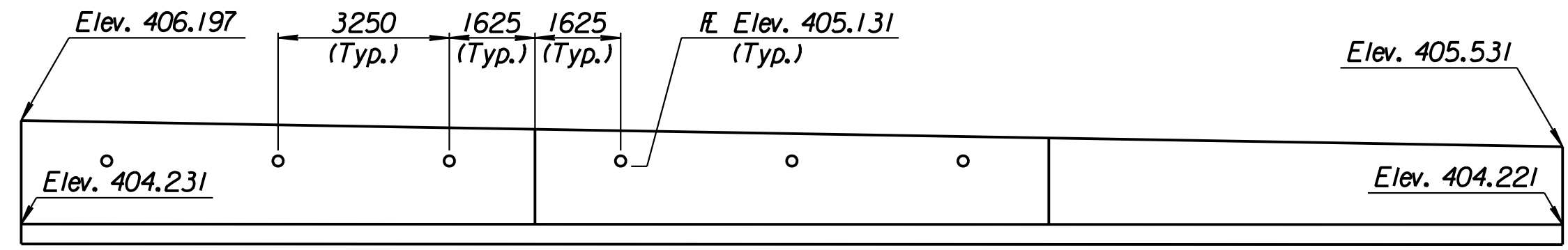
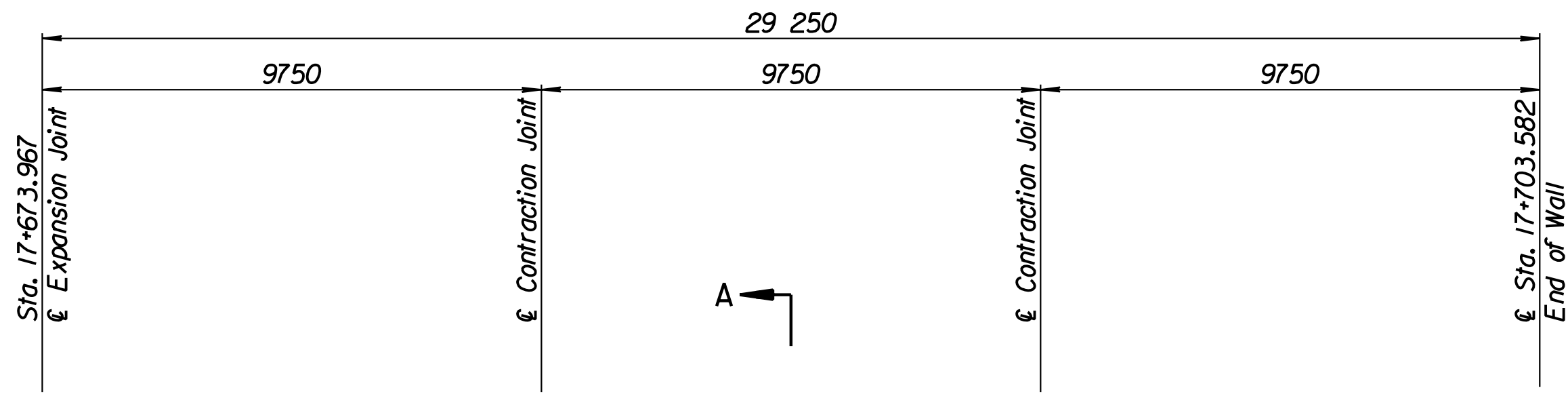


STATE	PROJECT NO.	YEAR	SHEET NO.	TOTAL SHEETS
KANSAS	54-87 K-6657-01	2002	350	1122

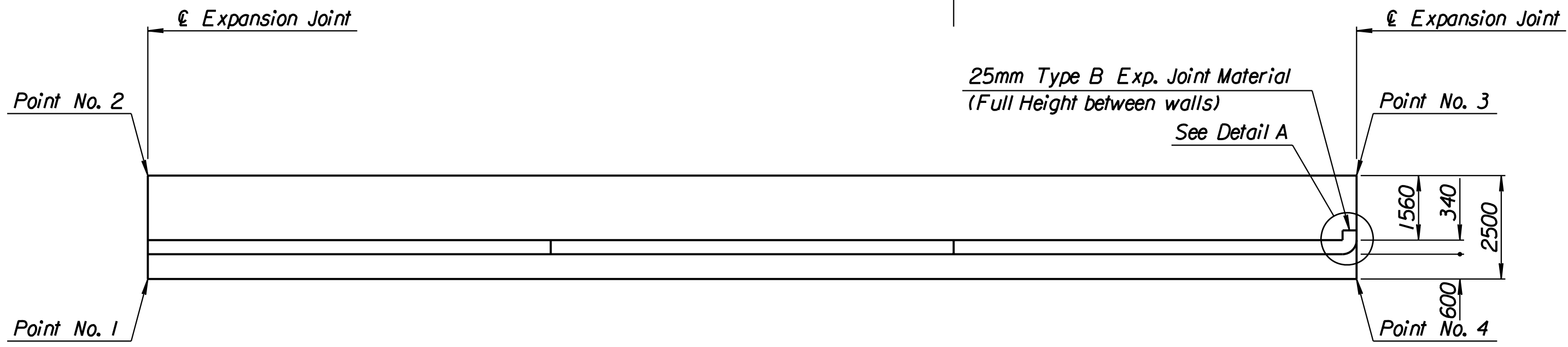
LAYOUT INFORMATION				
Point No.	North Coordinate	East Coordinate	Station	Offset
1	512116.251	493533.086	17+673.967	19.095 Rt.
2	512118.645	493532.365	17+673.967	16.595 Rt.
3	512126.808	493560.491	17+703.582	16.595 Rt.
4	512124.401	493561.164	17+703.582	19.095 Rt.

REINFORCING STEEL							
Straight Bars				Bent Bars			
Mark	Size	Number	Length	Mark	Size	Number	Length
L7-1	*16	198	2420	L7-3	*19	100	1520
L7-2	*13	32	14 960	L7-4	*13	99	1200
L7-5	*16	100	Varies	L7-8	*13	7	840
L7-6	*13	101	Varies				
L7-7	*13	36	9650				

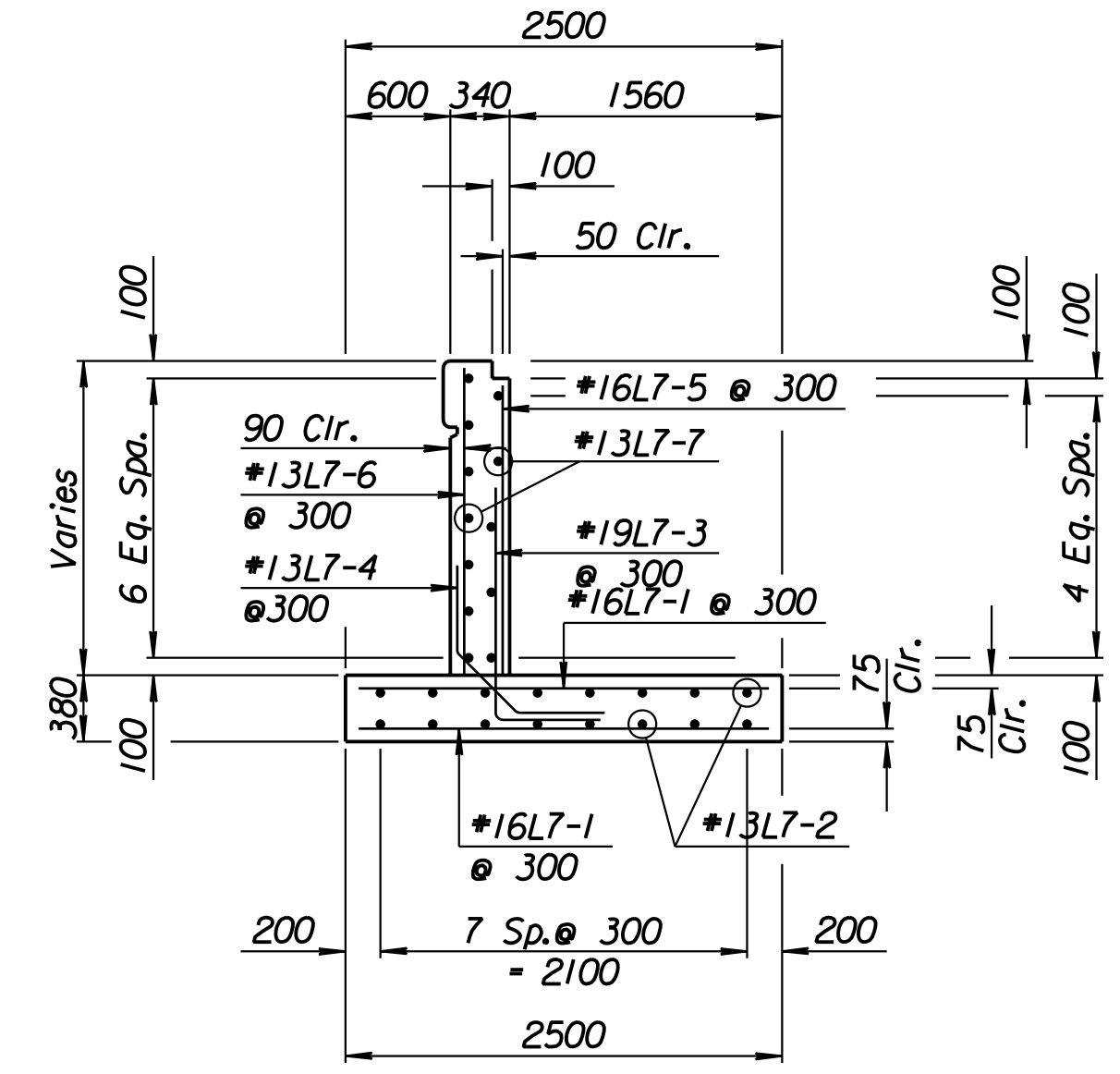
WALL QUANTITIES		
Item	Quantity	Unit
Concrete (Grade 30)(AE)	43.8	m ³
Reinforcing Steel (Grade 420)	2418	kg
Class III Excavation	134.9	m ³



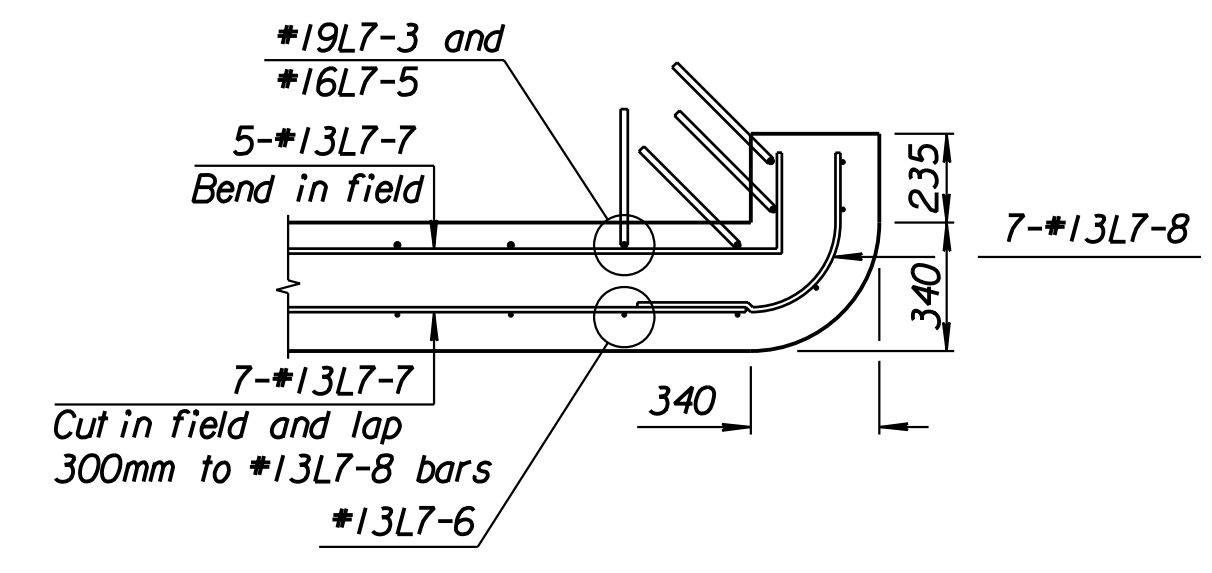
ELEVATION



PLAN

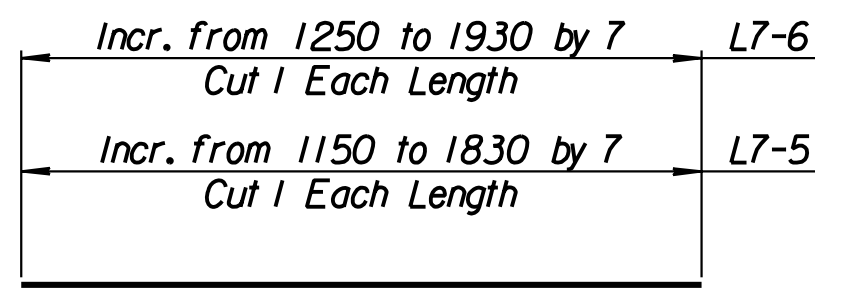
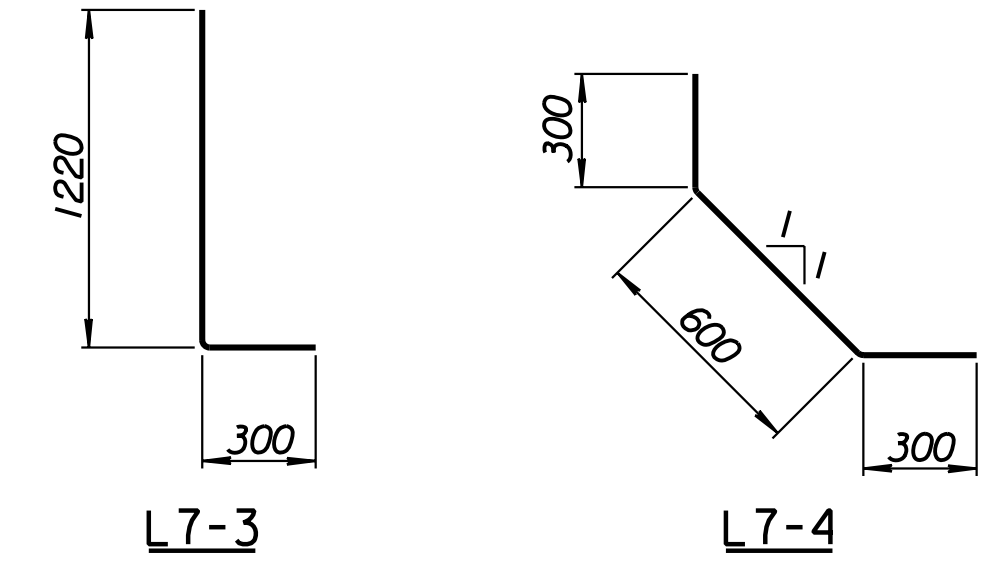


SECTION A-A

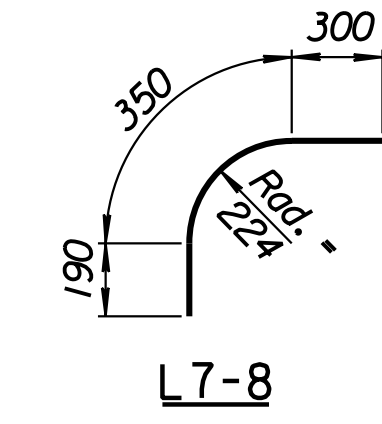


DETAIL A

Note: End of wall section has an additional 2-#13L7-6, 1-#19L7-3 and 1-#16L7-5.



BENDING DIAGRAMS
All dimensions are out to out of bars.



L7-8

Drawn by: wil 3-22-2002
 Plotted by: drp 3-22-2002
 I:/1997/97362/As-Built/dgn/s/Vol 2/Sh 350-Tyler-SEWall-I.dgn Last Rev: 8-23-07 By: gdr

RECORD DRAWING

1			
No.	Revisions	By	Date
CITY OF WICHITA			
TYLER SOUTHEAST WALL STA. 17+673.967 TO STA. 17+703.582 SEDGWICK COUNTY			
Professional Engineering Consultants, P.A. 303 S. TOPEKA • WICHITA, KANSAS 67202 316-262-2691 • FAX 316-262-3003			
Designed by	P.D.F.	Checked by	R.A.S.
Drawn by	W.L.L.	Date	April 11, 2002 Job No. 97362