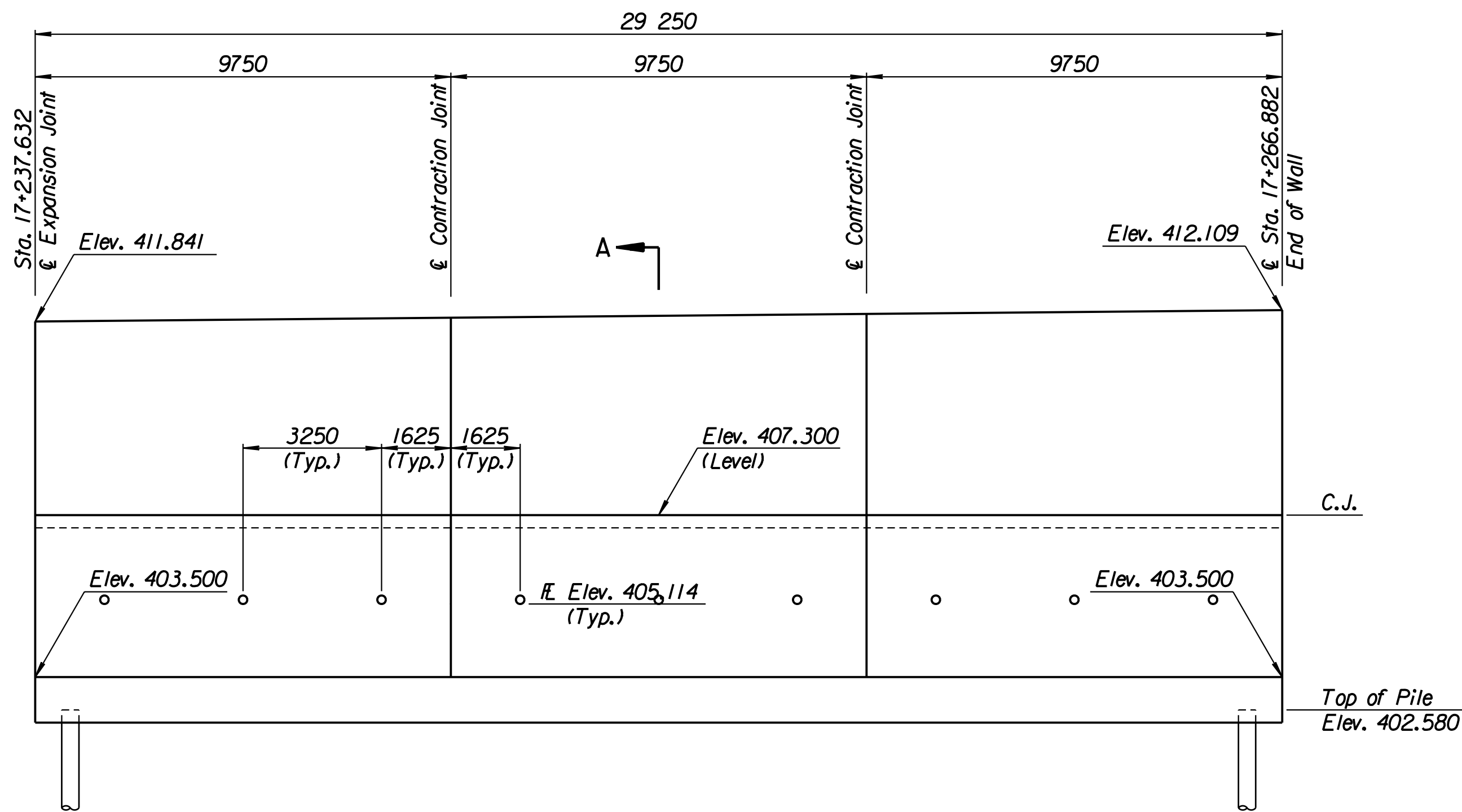


STATE	PROJECT NO.	YEAR	SHEET NO.	TOTAL SHEETS
KANSAS	54-87 K-6657-01	2002	351	1122

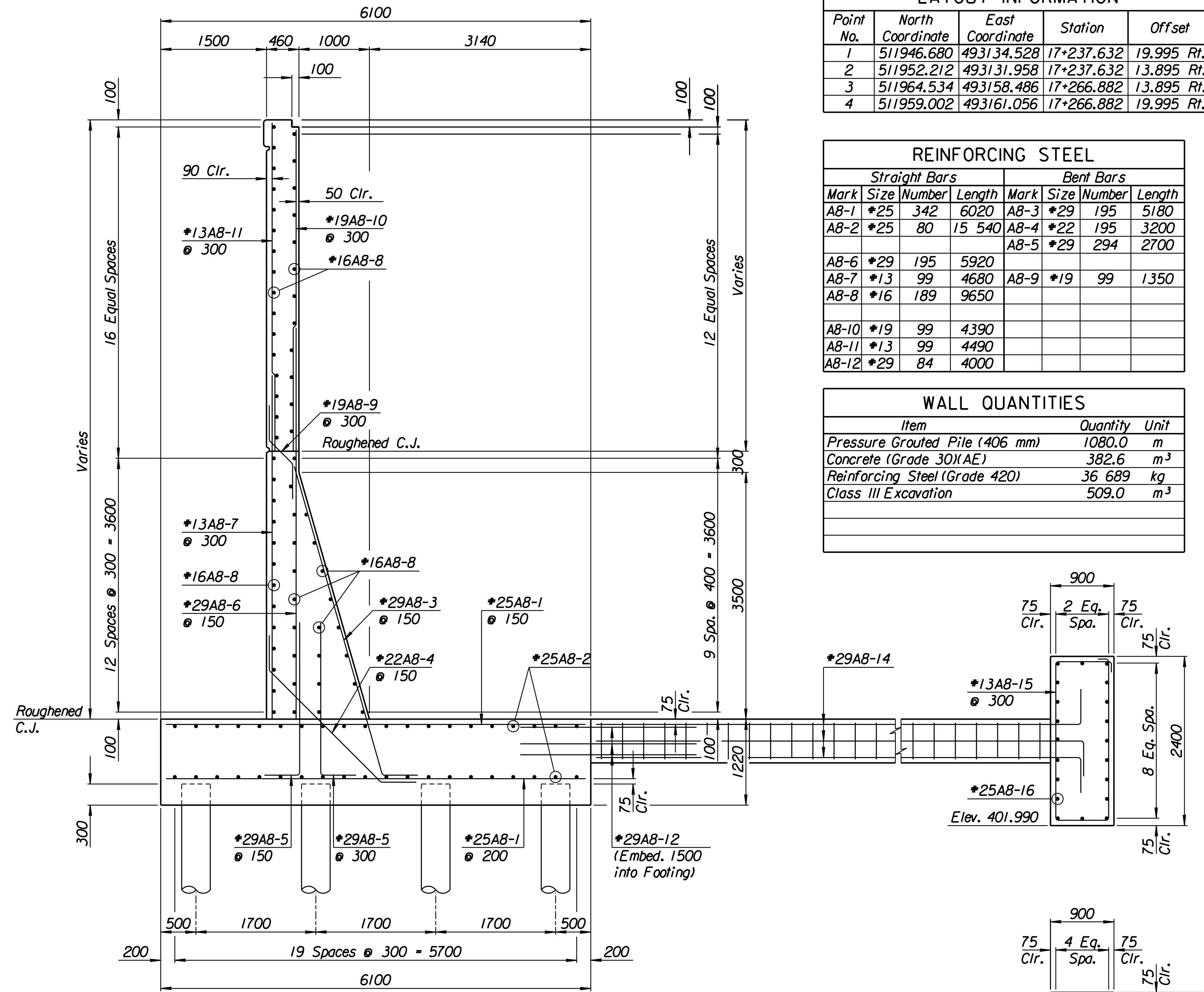
LAYOUT INFORMATION				
Point No.	North Coordinate	East Coordinate	Station	Offset
1	511946.680	493134.528	17+237.632	19.995 Rt.
2	511952.212	493131.958	17+237.632	13.895 Rt.
3	511964.534	493158.486	17+266.882	13.895 Rt.
4	511959.002	493161.056	17+266.882	19.995 Rt.

REINFORCING STEEL							
Straight Bars				Bent Bars			
Mark	Size	Number	Length	Mark	Size	Number	Length
A8-1	*25	342	6020	A8-3	*29	195	5180
A8-2	*25	80	15 540	A8-4	*22	195	3200
A8-6	*29	195	5920	A8-5	*29	294	2700
A8-7	*13	99	4680	A8-9	*19	99	1350
A8-8	*16	189	9650				
A8-10	*19	99	4390				
A8-11	*13	99	4490				
A8-12	*29	84	4000				

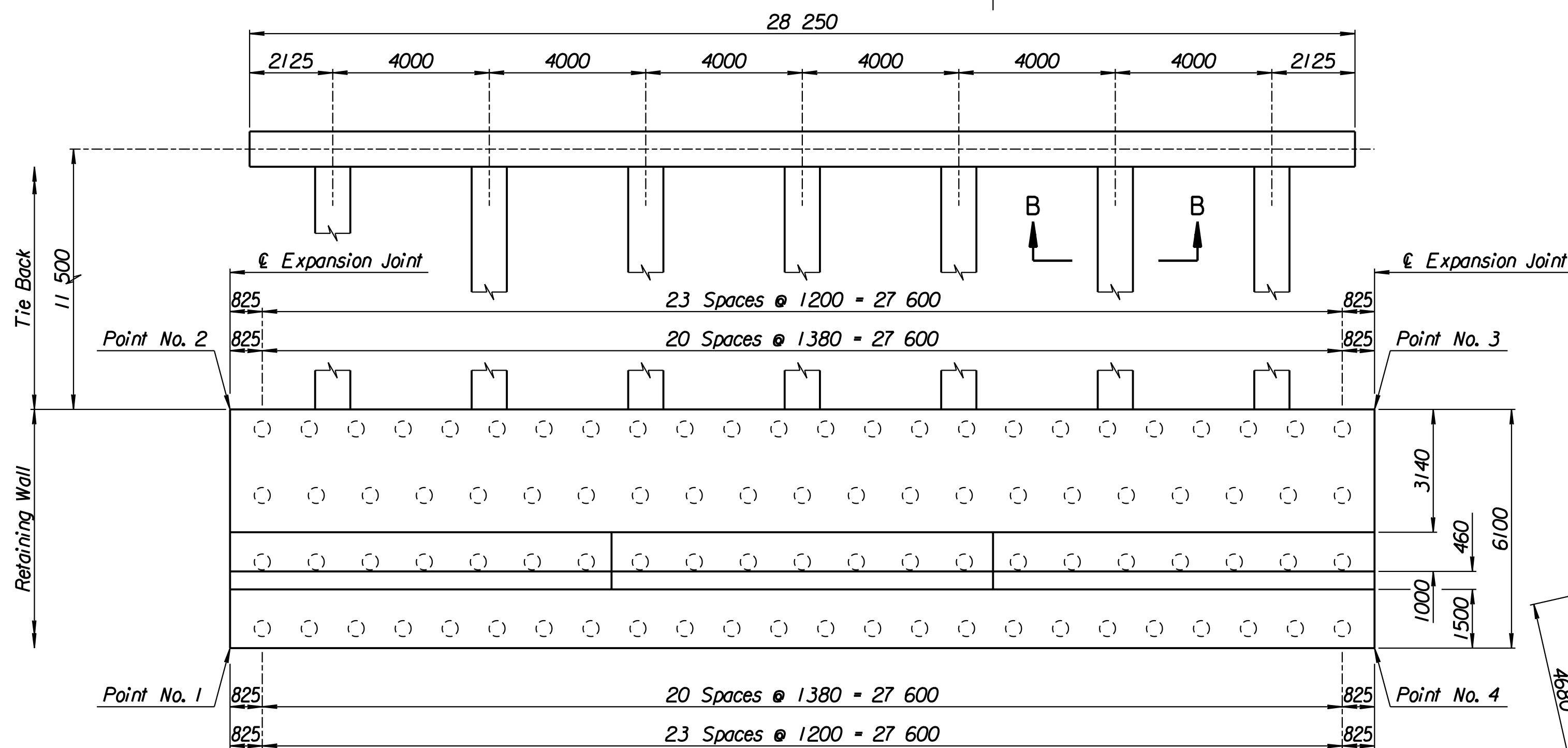
WALL QUANTITIES		
Item	Quantity	Unit
Pressure Grouted Pile (406 mm)	1080.0	m
Concrete (Grade 30)(AE)	382.6	m ³
Reinforcing Steel (Grade 420)	36 689	kg
Class III Excavation	509.0	m ³



ELEVATION



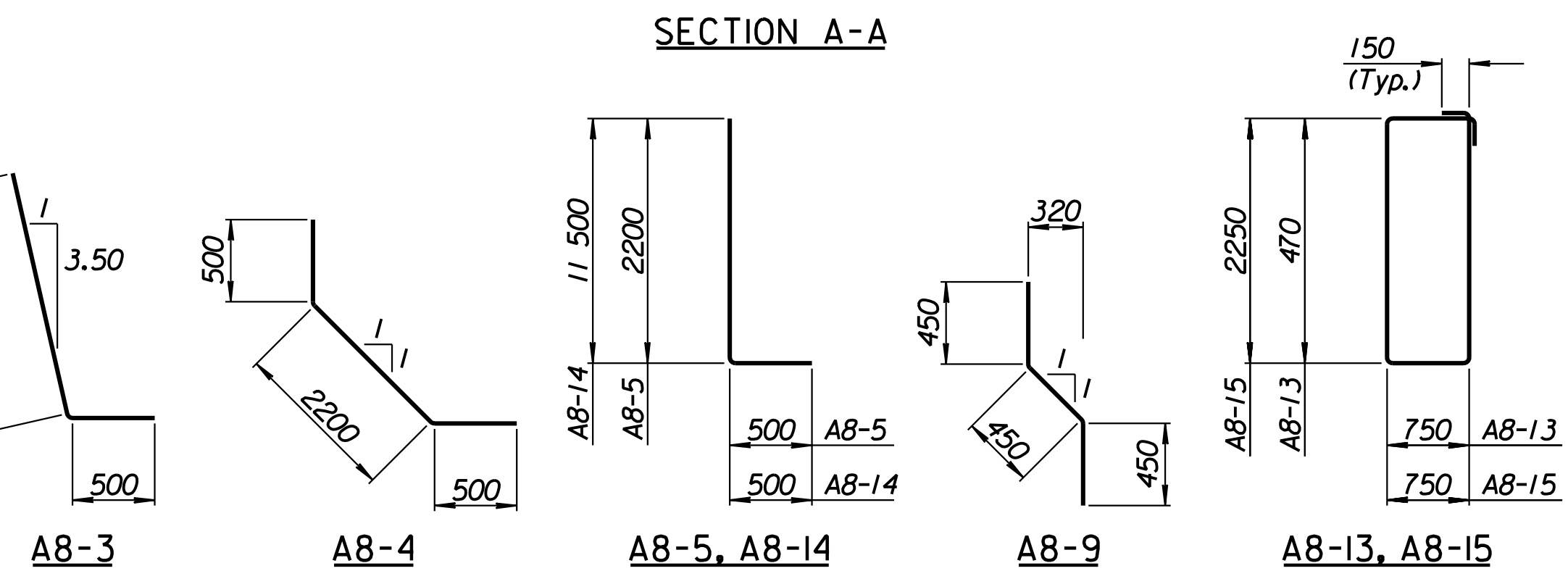
SECTION A-A



PLAN

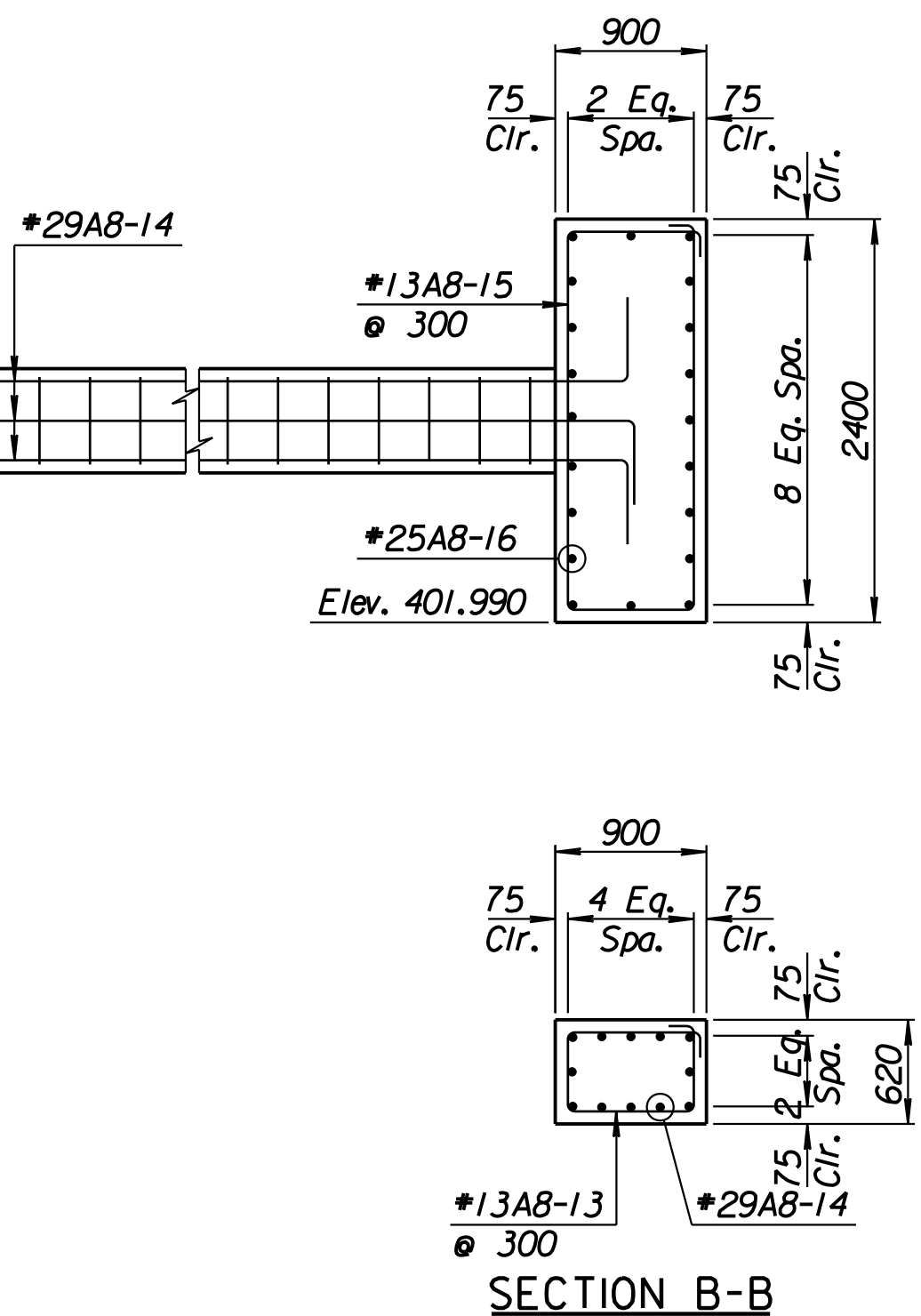
TIE BACK REINFORCING STEEL							
Straight Bars				Bent Bars			
Mark	Size	Number	Length	Mark	Size	Number	Length
A8-16	*25	40	15 040	A8-13	*13	259	2740
				A8-14	*29	84	12 000
				A8-15	*13	94	6300

TIE BACK QUANTITIES		
Item	Quantity	Unit
Concrete (Grade 30)(AE)	104.2	m ³
Reinforcing Steel (Grade 420)	8785	kg



BENDING DIAGRAMS
All dimensions are out to out of bars.

RECORD DRAWING



SECTION B-B

1			
No.	Revisions	By	Date
CITY OF WICHITA			
TYLER SOUTHWEST WALL			
STA. 17+237.632 TO STA. 17+266.882			
SEDGWICK COUNTY			
Professional Engineering Consultants, P.A. 303 S. TOPEKA • WICHITA, KANSAS 67202 316-262-2691 • FAX 316-262-3003			
Designed by	P.D.F.	Checked by	R.A.S.
Drawn by	W.L.L.	Date	April, 2002
		Job No.	97362

Drawn by: wil
 Plotted by: drp
 3-25-2002
 1:1997197362/As-Built/s/dgn/s/Vol 2/Sh 351-Tyler-SWWall-1.dgn Last Rev: 8-23-07 By: gdr