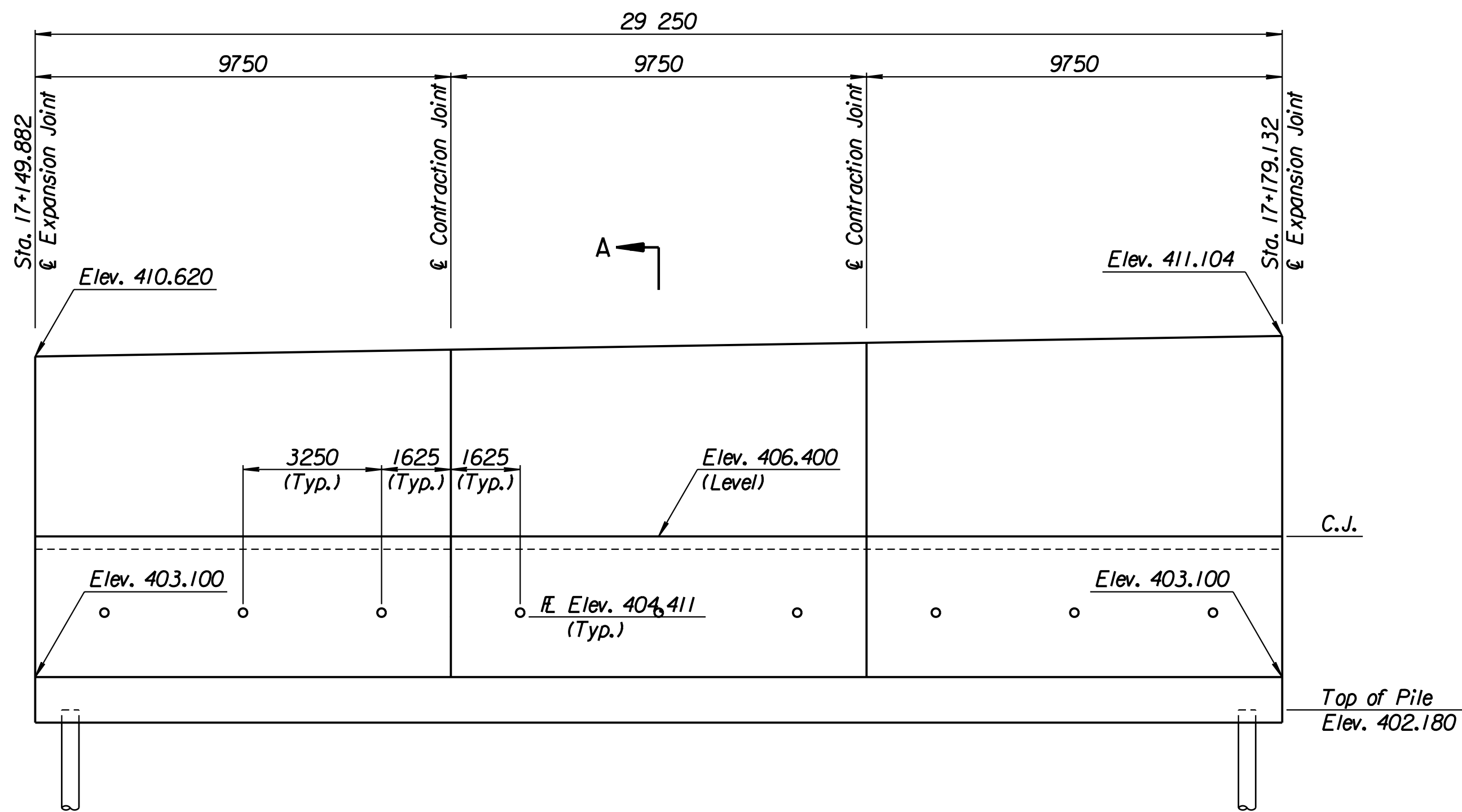


STATE	PROJECT NO.	YEAR	SHEET NO.	TOTAL SHEETS
KANSAS	54-87 K-6657-01	2002	354	1122

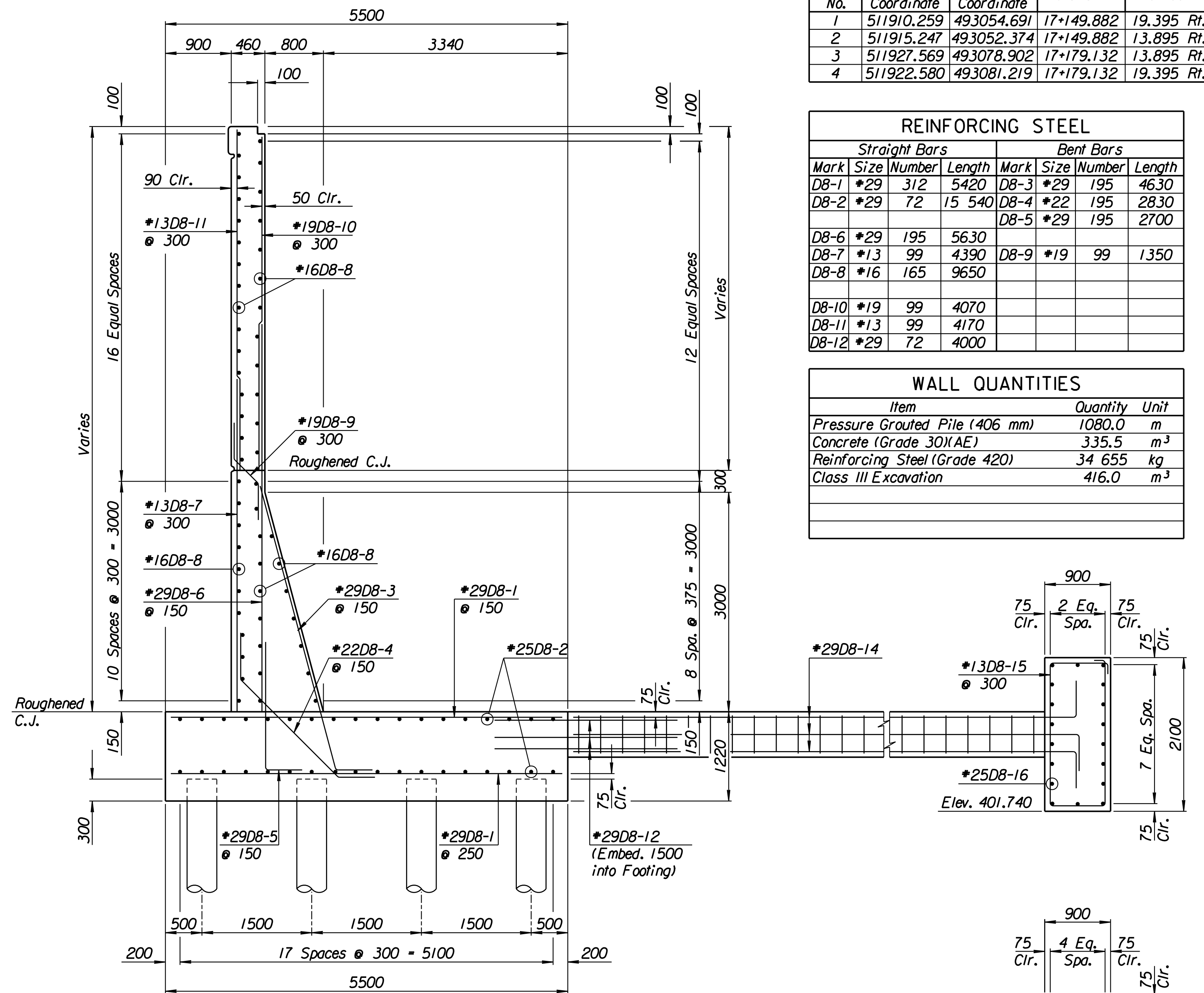
LAYOUT INFORMATION				
Point No.	North Coordinate	East Coordinate	Station	Offset
1	511910.259	493054.691	17+149.882	19.395 Rt.
2	511915.247	493052.374	17+149.882	13.895 Rt.
3	511927.569	493078.902	17+179.132	13.895 Rt.
4	511922.580	493081.219	17+179.132	19.395 Rt.

REINFORCING STEEL							
Straight Bars				Bent Bars			
Mark	Size	Number	Length	Mark	Size	Number	Length
D8-1	*29	312	5420	D8-3	*29	195	4630
D8-2	*29	72	15 540	D8-4	*22	195	2830
D8-6	*29	195	5630	D8-5	*29	195	2700
D8-7	*13	99	4390	D8-9	*19	99	1350
D8-8	*16	165	9650				
D8-10	*19	99	4070				
D8-11	*13	99	4170				
D8-12	*29	72	4000				

WALL QUANTITIES		
Item	Quantity	Unit
Pressure Grouted Pile (406 mm)	1080.0	m
Concrete (Grade 30)(AE)	335.5	m ³
Reinforcing Steel (Grade 420)	34 655	kg
Class III Excavation	416.0	m ³

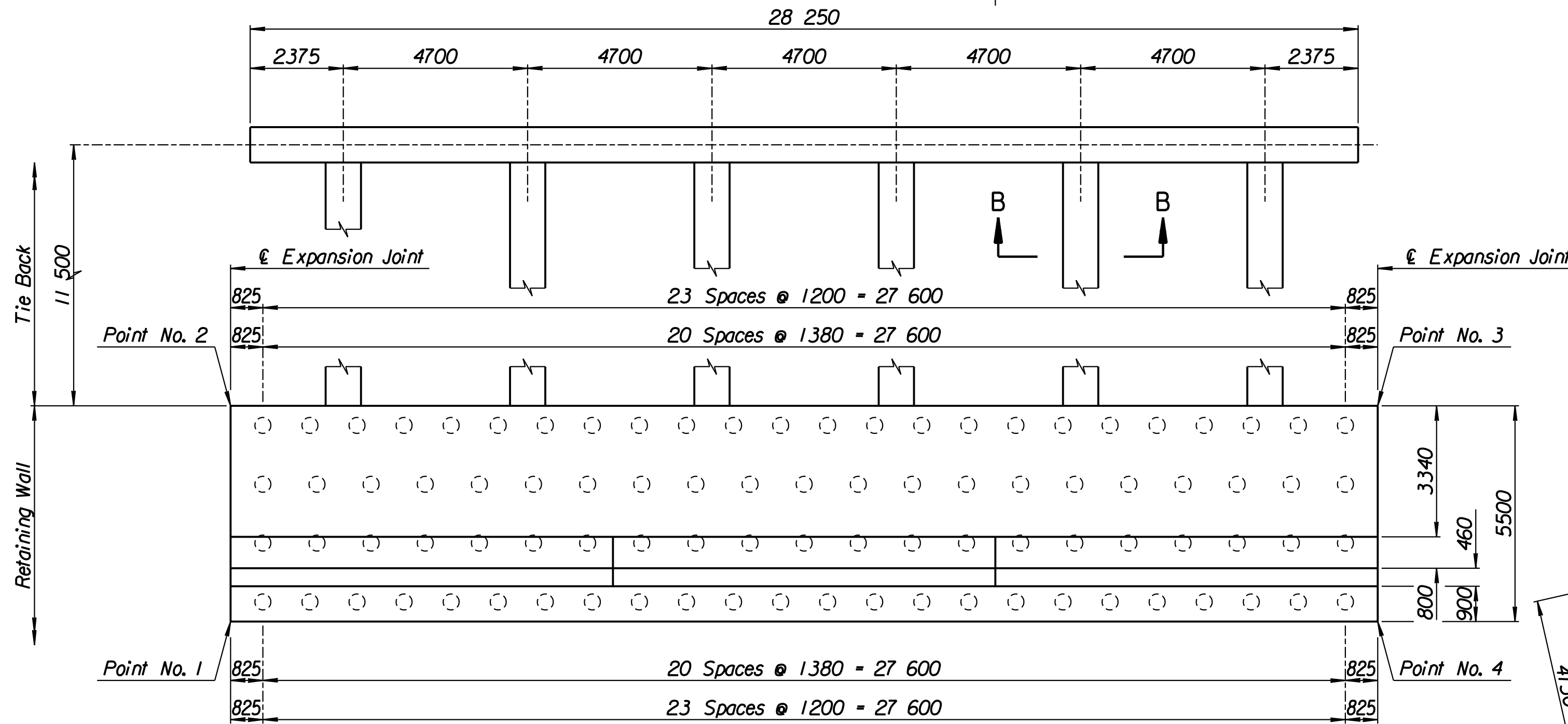


ELEVATION



SECTION A-A

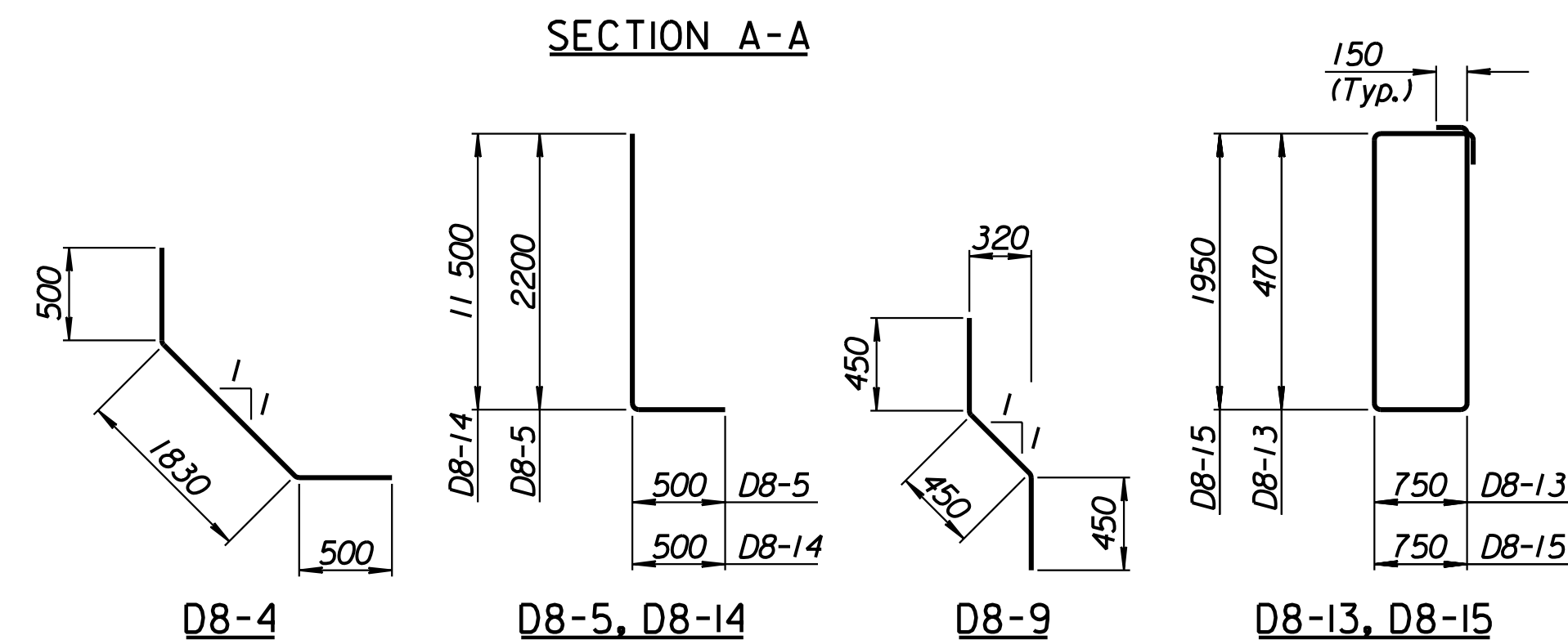
SECTION B-B



PLAN

TIE BACK REINFORCING STEEL							
Straight Bars			Bent Bars				
Mark	Size	Number	Length	Mark	Size	Number	Length
D8-16	*25	36	15 040	D8-13	*13	222	2740
				D8-13	*29	72	12 000
				D8-13	*13	94	5700

TIE BACK QUANTITIES		
Item	Quantity	Unit
Concrete (Grade 30)(AE)	90.4	m ³
Reinforcing Steel (Grade 420)	7660	kg



BENDING DIAGRAMS

All dimensions are out to out of bars.

RECORD DRAWING

1			
No.	Revisions	By	Date
CITY OF WICHITA			
TYLER SOUTHWEST WALL			
STA. 17+149.882 TO STA. 17+179.132			
SEDGWICK COUNTY			
Professional Engineering Consultants, P.A. 303 S. TOPEKA • WICHITA, KANSAS 67202 316-262-2691 • FAX 316-262-3003			
Designed by	P.D.F.	Checked by	R.A.S.
Drawn by	W.L.L.	Date	April, 2002
		Job No.	97362

Drawn by: wil
 Plotted by: drp
 3-25-2002
 1:1997197362/As-Built/dgn/s/Vol 2/Sh 354-Tyler-SWWall-4.dgn Last Rev: 8-24-07 By: gdr