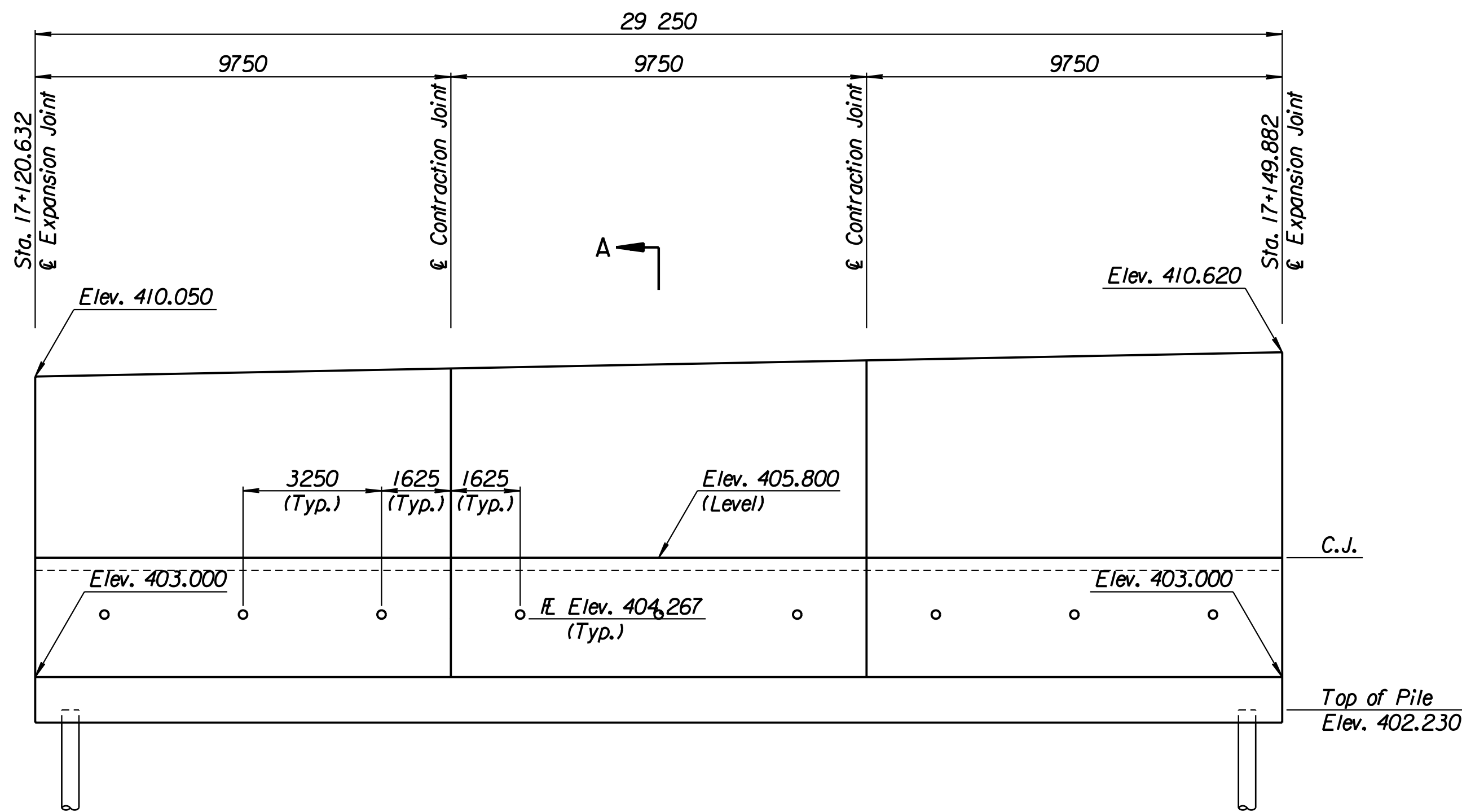


STATE	PROJECT NO.	YEAR	SHEET NO.	TOTAL SHEETS
KANSAS	54-87 K-6657-01	2002	355	1122

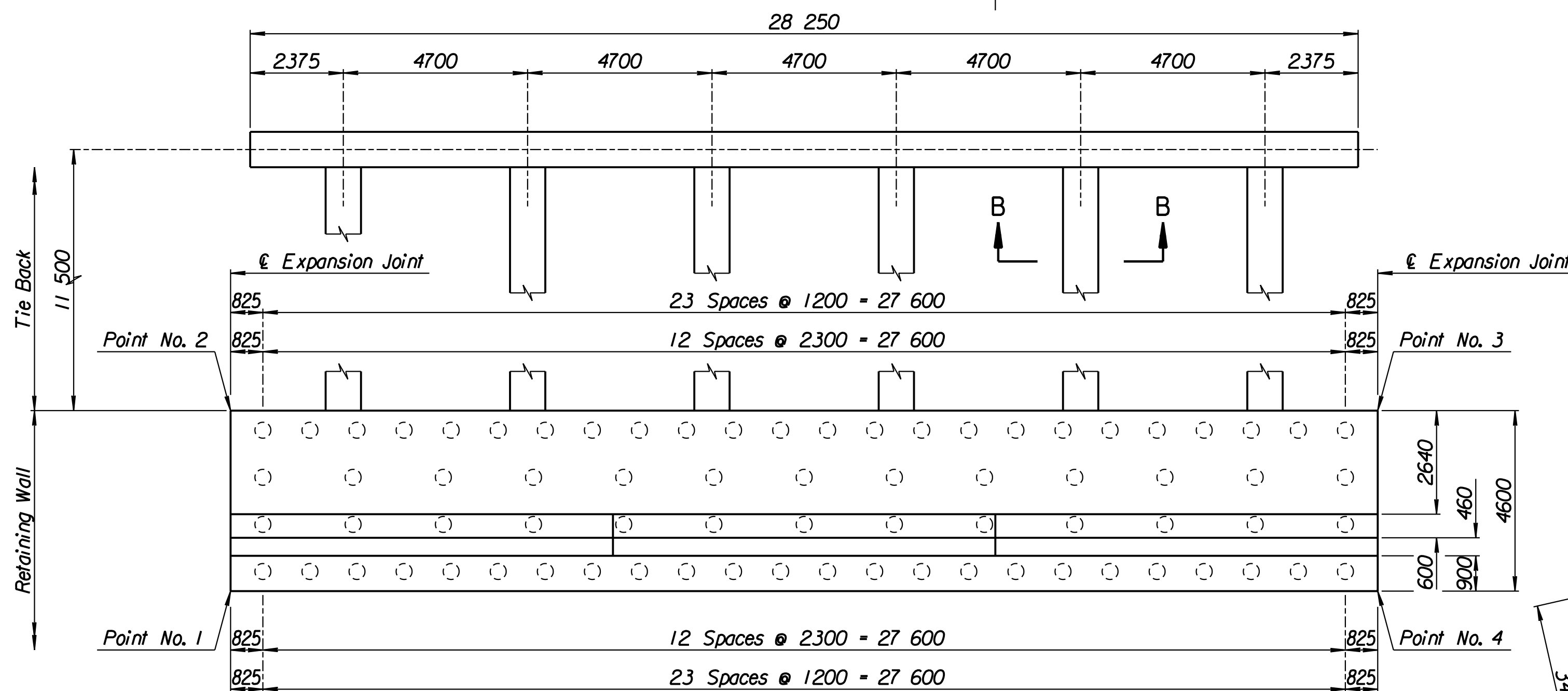
LAYOUT INFORMATION				
Point No.	North Coordinate	East Coordinate	Station	Offset
1	511897.937	493028.163	17+120.632	19.395 Rt.
2	511902.109	493026.225	17+120.632	14.795 Rt.
3	511914.431	493052.753	17+149.882	14.795 Rt.
4	511910.259	493054.691	17+149.882	19.395 Rt.

REINFORCING STEEL						
Straight Bars				Bent Bars		
Mark	Size	Number	Length	Mark	Size	Number
E8-1	*25	342	4520	E8-3	*29	195
E8-2	*25	60	15 540	E8-4	*19	195
E8-6	*29	195	5220	E8-5	*29	195
E8-7	*13	99	3980	E8-9	*19	99
E8-8	*16	150	9650			
E8-10	*19	99	4100			
E8-11	*13	99	4200			
E8-12	*29	72	4000			

WALL QUANTITIES		
Item	Quantity	Unit
Pressure Grouted Pile (406 mm)	888.0	m
Concrete (Grade 30)(AE)	264.3	m ³
Reinforcing Steel (Grade 420)	28 207	kg
Class III Excavation	327.6	m ³



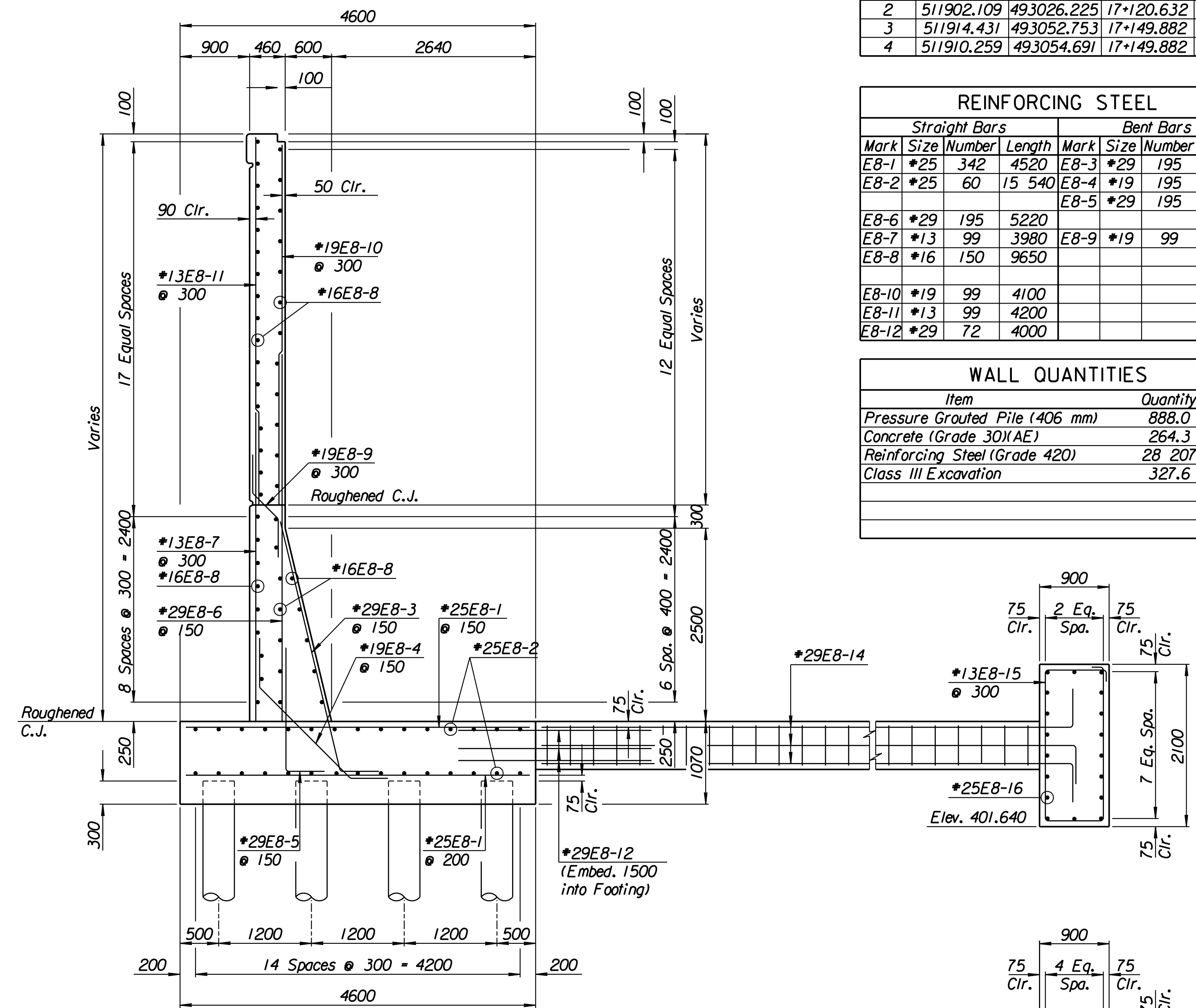
ELEVATION



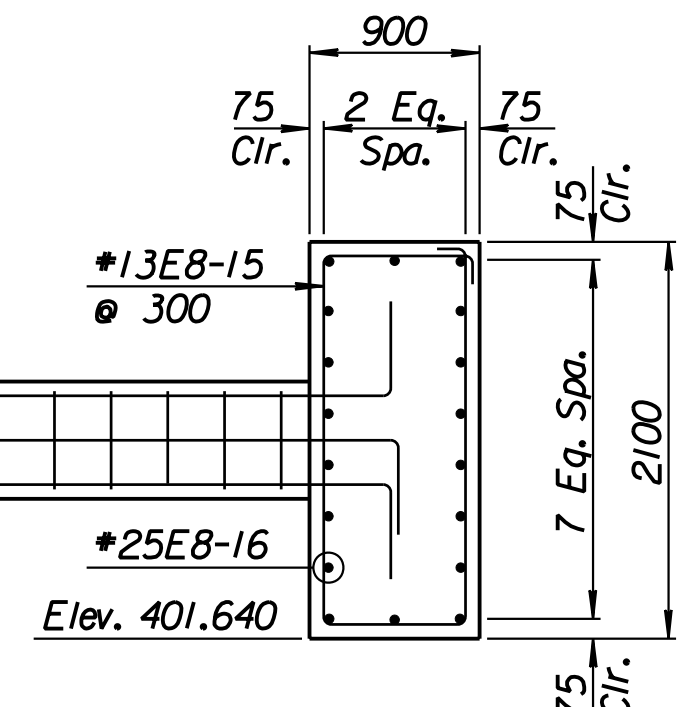
PLAN

TIE BACK REINFORCING STEEL					
Straight Bars			Bent Bars		
Mark	Size	Number	Length	Mark	Size
E8-16	*25	36	15 040	E8-13	*13
				E8-14	*29
				E8-15	*13

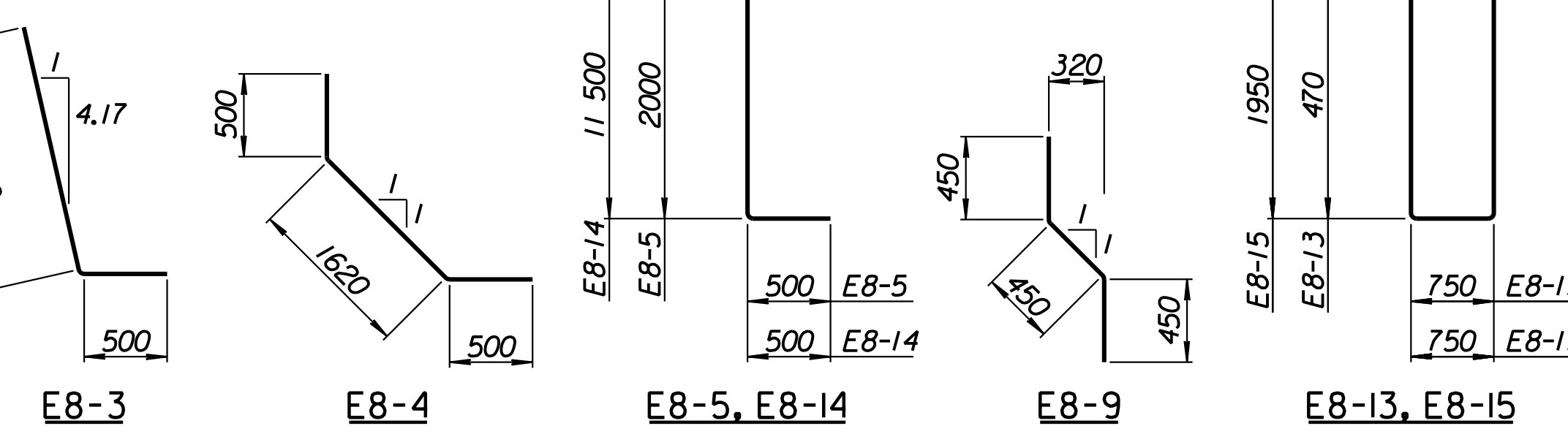
TIE BACK QUANTITIES		
Item	Quantity	Unit
Concrete (Grade 30)(AE)	90.4	m ³
Reinforcing Steel (Grade 420)	7660	kg
Class III Excavation	m ³



SECTION A-A



SECTION B-B



No.	Revisions	By	Date
1			

CITY OF WICHITA

TYLER SOUTHWEST WALL
 STA. 17+120.632 TO STA. 17+149.882
 SEDGWICK COUNTY

Professional Engineering Consultants, P.A.
 303 S. TOPEKA • WICHITA, KANSAS 67202
 316-262-2691 • FAX 316-262-3003

Designed by	P.D.F.	Checked by	R.A.S.
Drawn by	W.L.L.	Date	April 11, 2002

RECORD DRAWING

Drawn by: wil 3-25-2002
 Plotted by: drp 3-25-2002
 1:1997197362/As-Built/s/dgn/s/Vol 2/Sh 355-Tyler-SWWall-5.dgn Last Rev: 8-24-07 By: gdr