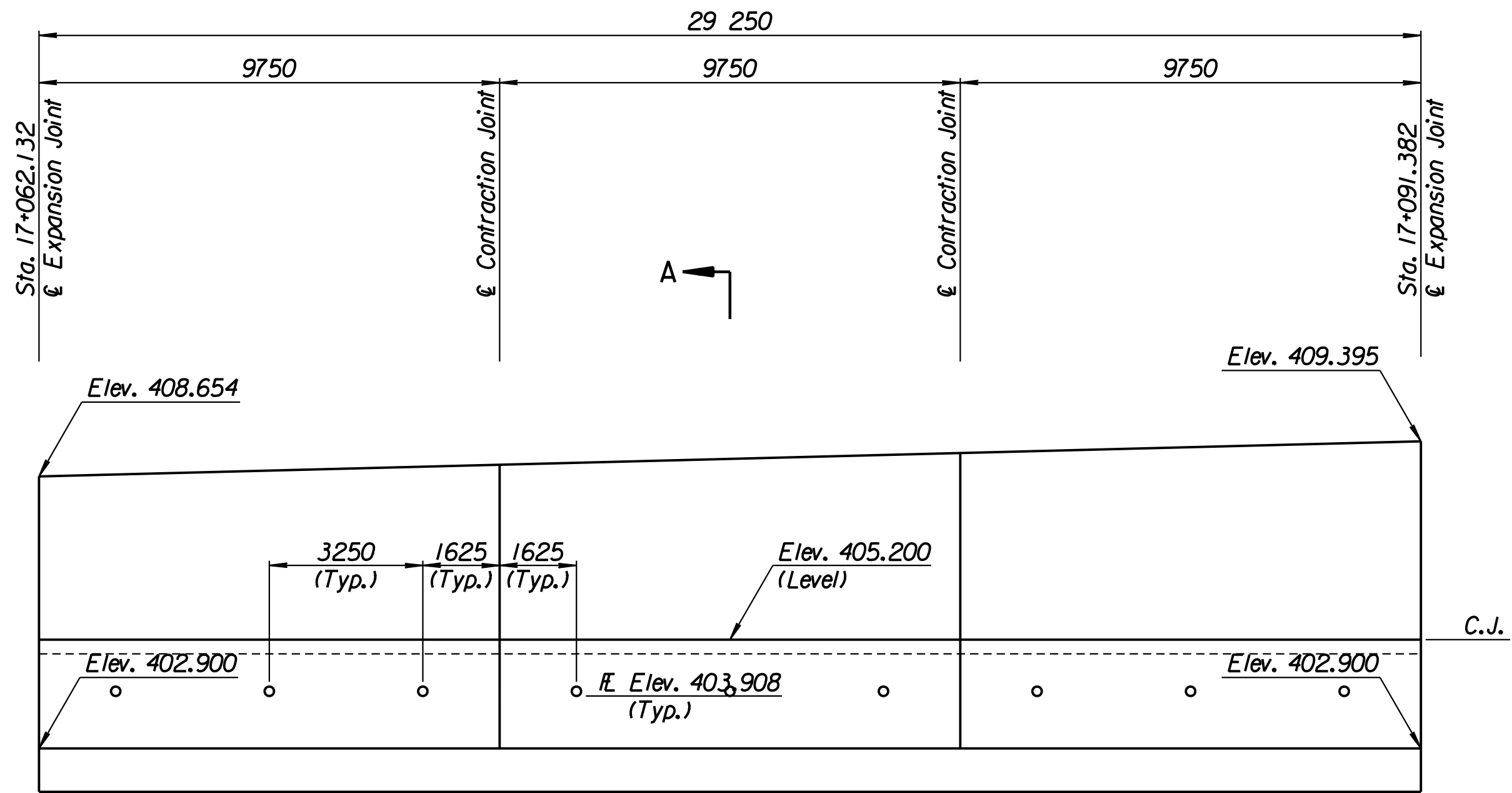


STATE	PROJECT NO.	YEAR	SHEET NO.	TOTAL SHEETS
KANSAS	54-87 K-6657-01	2002	357	1122

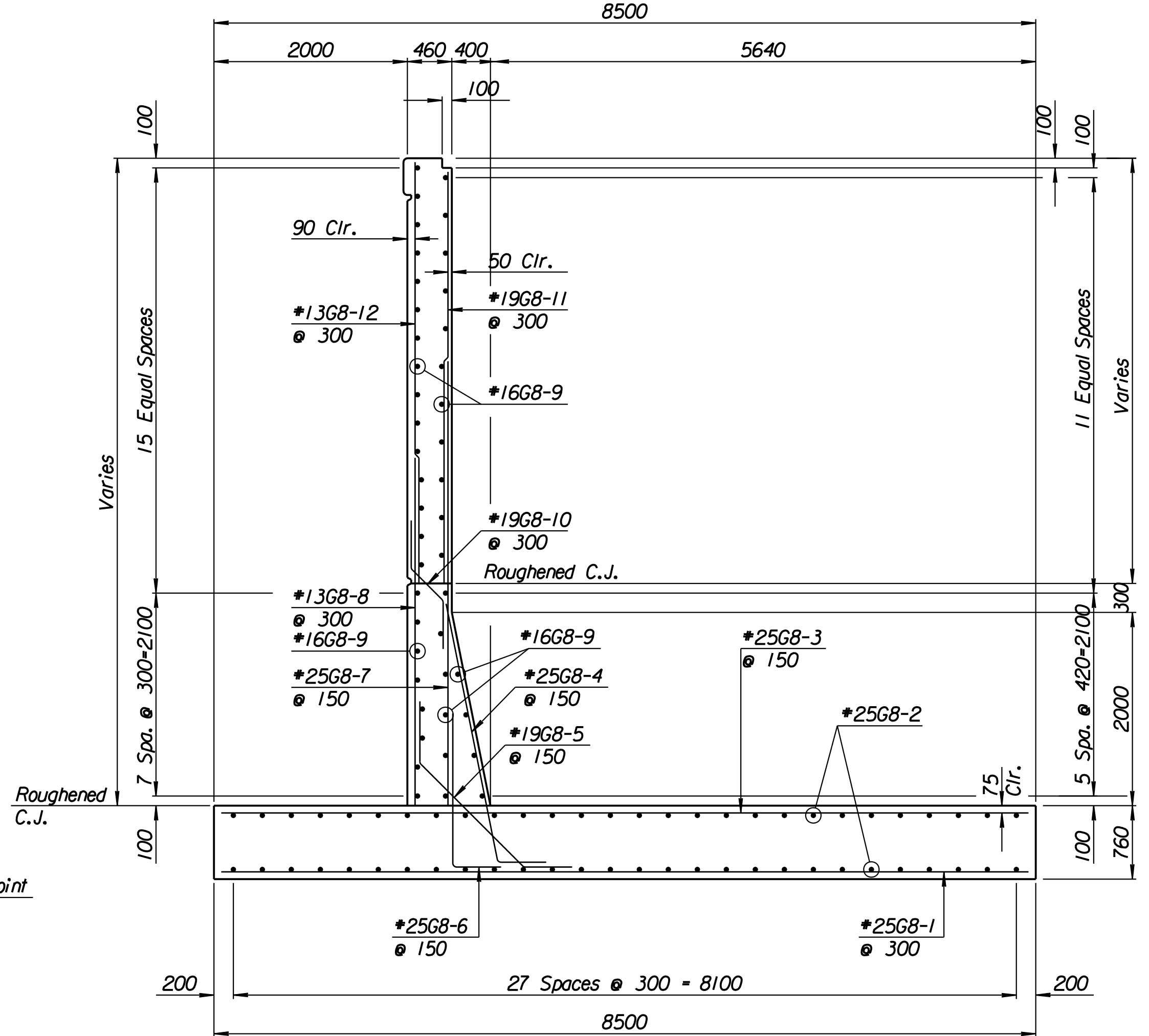
LAYOUT INFORMATION				
Point No.	North Coordinate	East Coordinate	Station	Offset
1	511872.296	492975.570	17+062.132	20.495 Rt.
2	511880.005	492971.990	17+062.132	11.995 Rt.
3	511892.327	492998.518	17+091.382	11.995 Rt.
4	511884.618	493002.098	17+091.382	20.495 Rt.

REINFORCING STEEL							
Straight Bars				Bent Bars			
Mark	Size	Number	Length	Mark	Size	Number	Length
G8-1	*25	99	8420	G8-4	*25	195	3300
G8-2	*25	112	15 540	G8-5	*19	195	2500
G8-3	*25	195	8420	G8-6	*25	195	2060
G8-7	*25	195	4500	G8-10	*19	99	1350
G8-8	*13	99	3650				
G8-9	*16	132	9650				
G8-11	*19	99	3300				
G8-12	*13	99	3400				

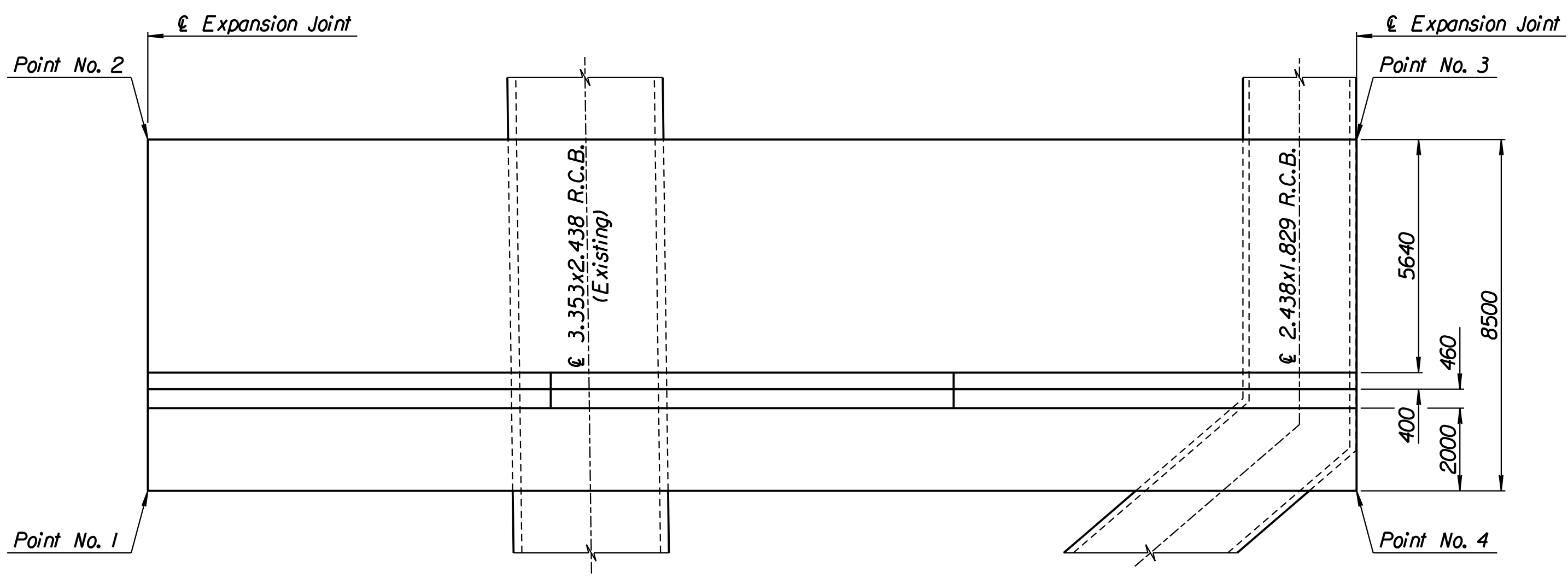
WALL QUANTITIES		
Item	Quantity	Unit
Concrete (Grade 30)(AE)	282.8	m ³
Reinforcing Steel (Grade 420)	29 178	kg
Class III Excavation	1420.4	m ³



A
ELEVATION

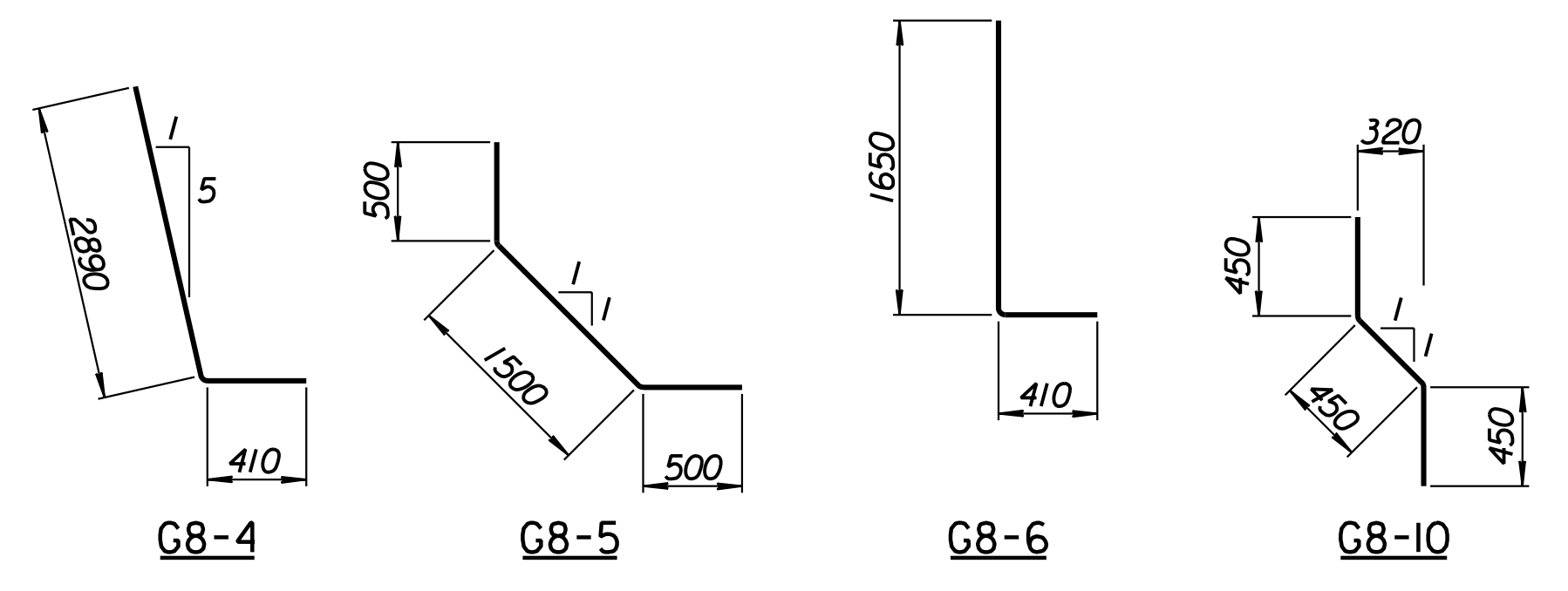


SECTION A-A



PLAN

Excavate to Elevation 399.3 and compact backfill.
See "Overexcavation and Compaction Detail" on Sheet No. 238.



BENDING DIAGRAMS
All dimensions are out to out of bars.

RECORD DRAWING

1			
No.	Revisions	By	Date
CITY OF WICHITA			
TYLER SOUTHWEST WALL			
STA. 17+062.132 TO STA. 17+091.382			
SEDGWICK COUNTY			
Professional Engineering Consultants, P.A. 303 S. TOPEKA • WICHITA, KANSAS 67202 316-262-2691 • FAX 316-262-3003			
Designed by	P.D.F.	Checked by	R.A.S.
Drawn by	W.L.L.	Date	April, 2002
		Job No.	97362

Drawn by: wil
 Plotted by: drp
 3-28-2002
 I:/1997/97362/As-Built/dgn/s/Vol 2/Sh 357-Tyler-SWwall-7.dgn Last Rev: 8-24-07 By: gdr