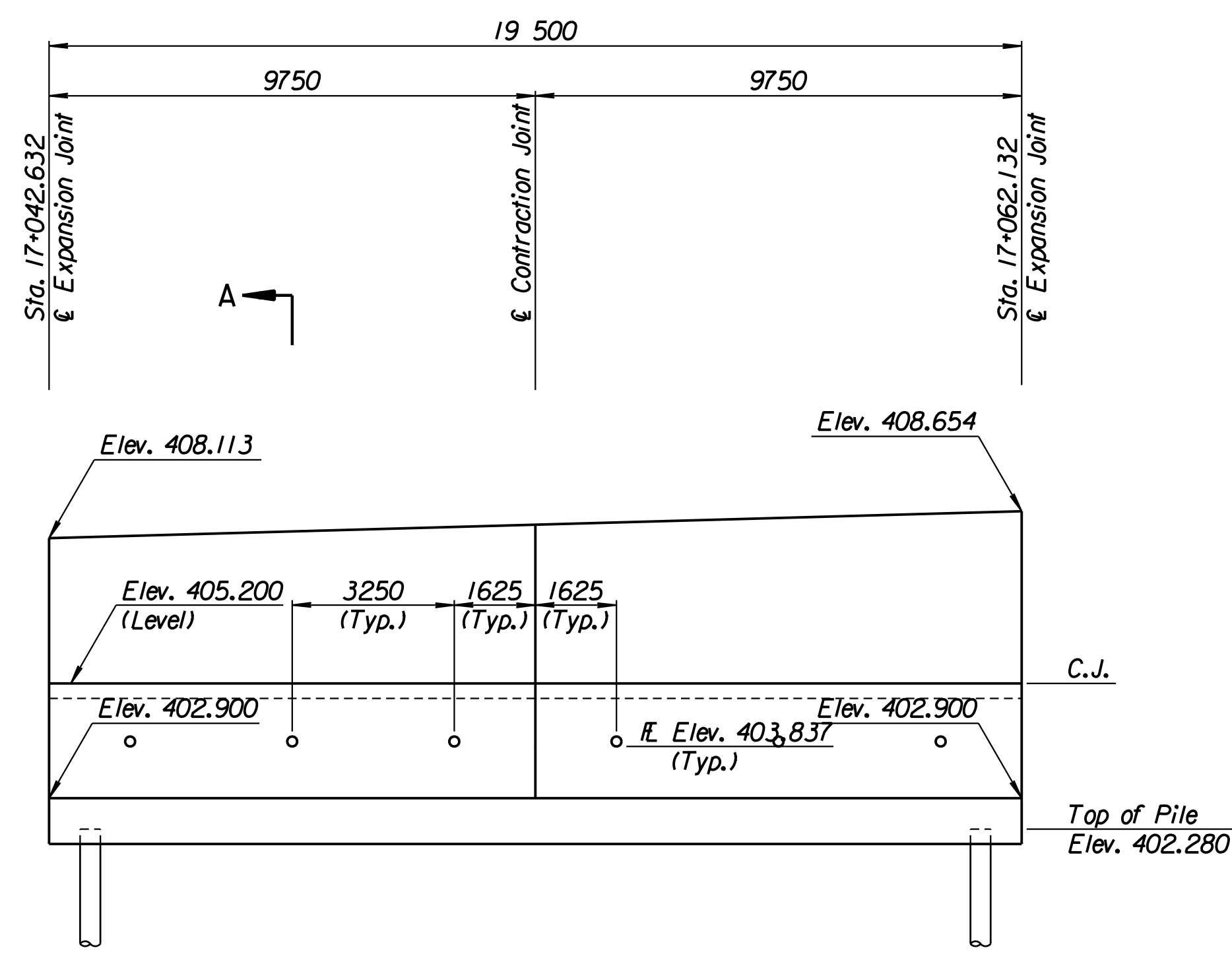


STATE	PROJECT NO.	YEAR	SHEET NO.	TOTAL SHEETS
KANSAS	54-87 K-6657-01	2002	358	1122

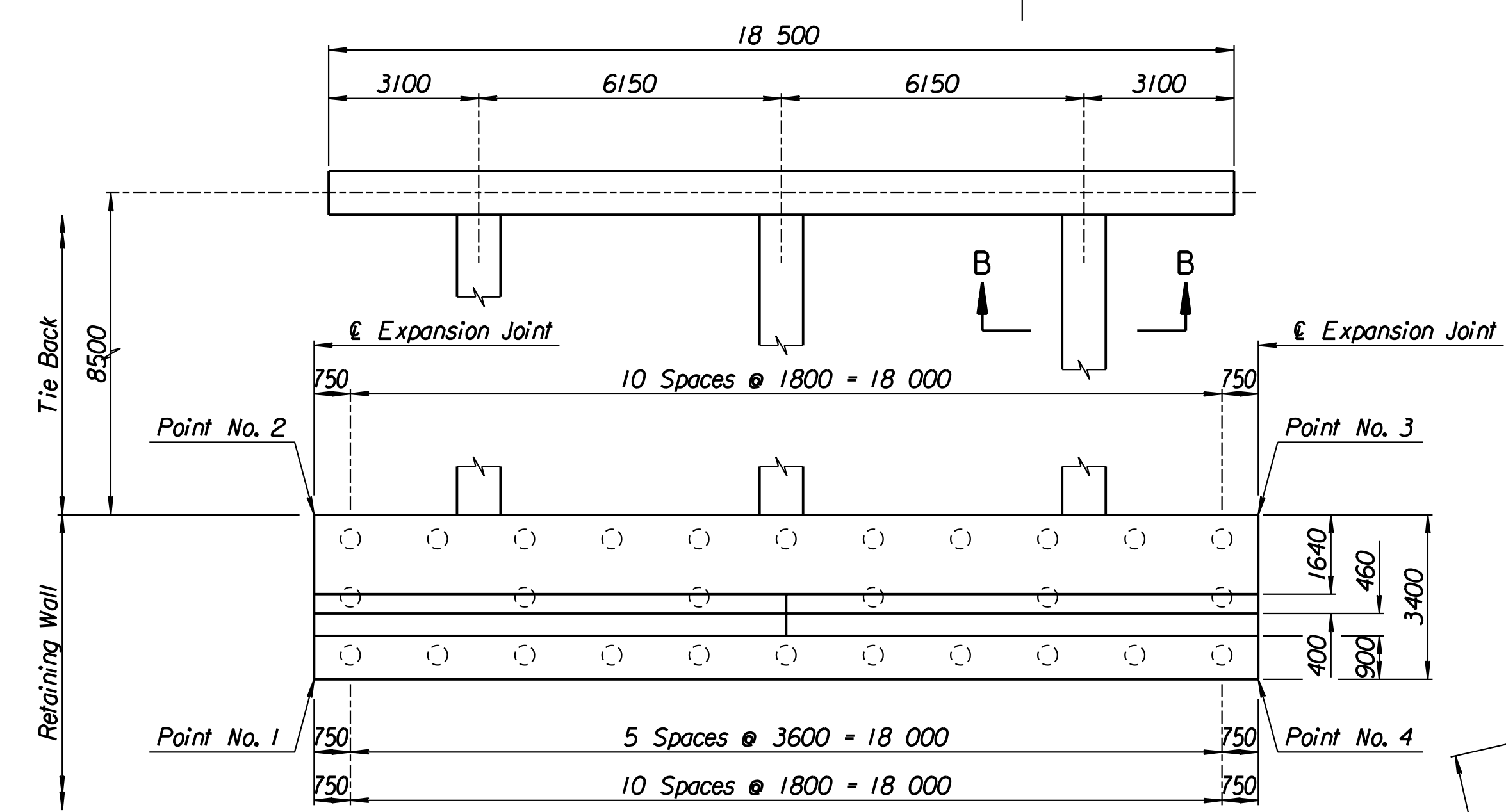
LAYOUT INFORMATION				
Point No.	North Coordinate	East Coordinate	Station	Offset
1	511865.079	492957.421	17+042.632	19.395 Rt.
2	511868.163	492955.989	17+042.632	15.995 Rt.
3	511876.377	492973.675	17+062.132	15.995 Rt.
4	511873.293	492975.107	17+062.132	19.395 Rt.

REINFORCING STEEL							
Straight Bars				Bent Bars			
Mark	Size	Number	Length	Mark	Size	Number	Length
H8-1	*25	164	3320	H8-3	*22	130	3110
H8-2	*25	44	10 670	H8-4	*22	66	2320
H8-6	*19	130	3760	H8-5	*19	130	1500
H8-7	*13	66	3450	H8-9	*16	66	1350
H8-8	*16	78	9650				
H8-10	*19	66	2760				
H8-11	*13	66	2860				
H8-12	*29	36	4000				

WALL QUANTITIES		
Item	Quantity	Unit
Pressure Grouted Pile (406 mm)	336.0	m
Concrete (Grade 30)(AE)	117.8	m ³
Reinforcing Steel (Grade 420)	9984	kg
Class III Excavation	139.6	m ³



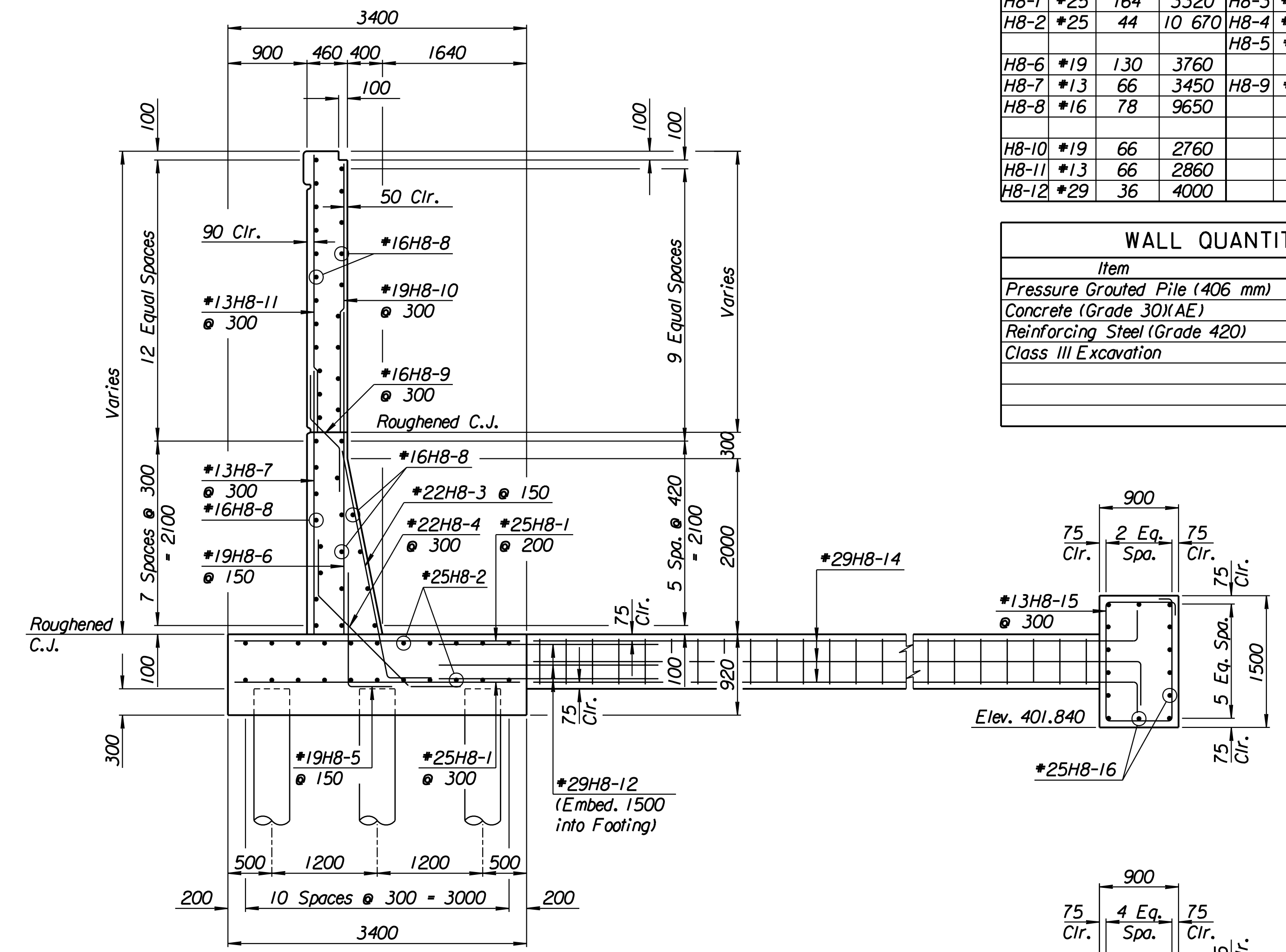
ELEVATION



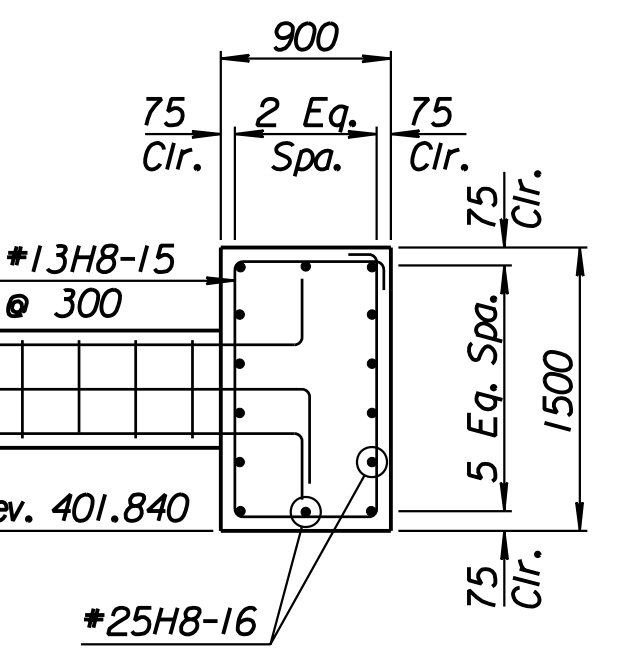
PLAN

TIE BACK REINFORCING STEEL					
Straight Bars			Bent Bars		
Mark	Size	Number	Length	Mark	Size
H8-16	*25	28	10 170	H8-13	*13
				H8-14	*29
				H8-15	*13

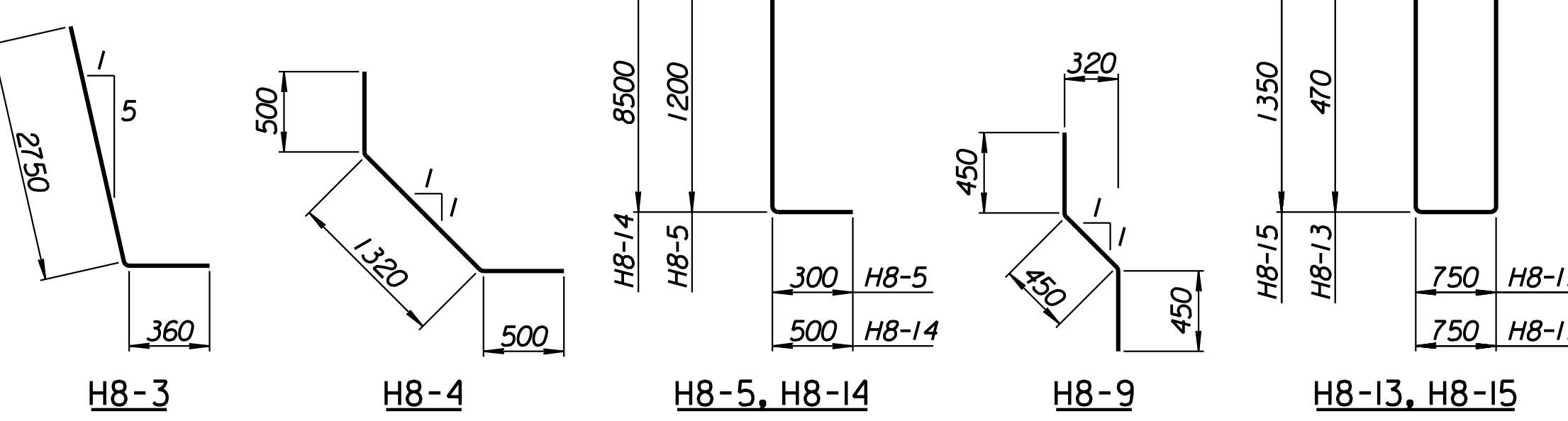
TIE BACK QUANTITIES		
Item	Quantity	Unit
Concrete (Grade 30)(AE)	38.5	m ³
Reinforcing Steel (Grade 420)	3273	kg



SECTION A-A



SECTION B-B



BENDING DIAGRAMS
All dimensions are out to out of bars.

RECORD DRAWING

1			
No.	Revisions	By	Date
CITY OF WICHITA			
TYLER SOUTHWEST WALL			
STA. 17+042.632 TO STA. 17+062.132			
SEDGWICK COUNTY			
Professional Engineering Consultants, P.A. 303 S. TOPEKA • WICHITA, KANSAS 67202 316-262-2691 • FAX 316-262-3003			
Designed by	P.D.F.	Checked by	R.A.S.
Drawn by	W.L.L.	Date	April 11, 2002
		Job No.	97362

Drawn by: wil
 Plotted by: drp
 3-25-2002
 I:\1997\97362\As-Builts\dgn\Vol 2\Sh 358-Tyler-SWWall-8.dgn Last Rev: 8-24-07 By: gdr