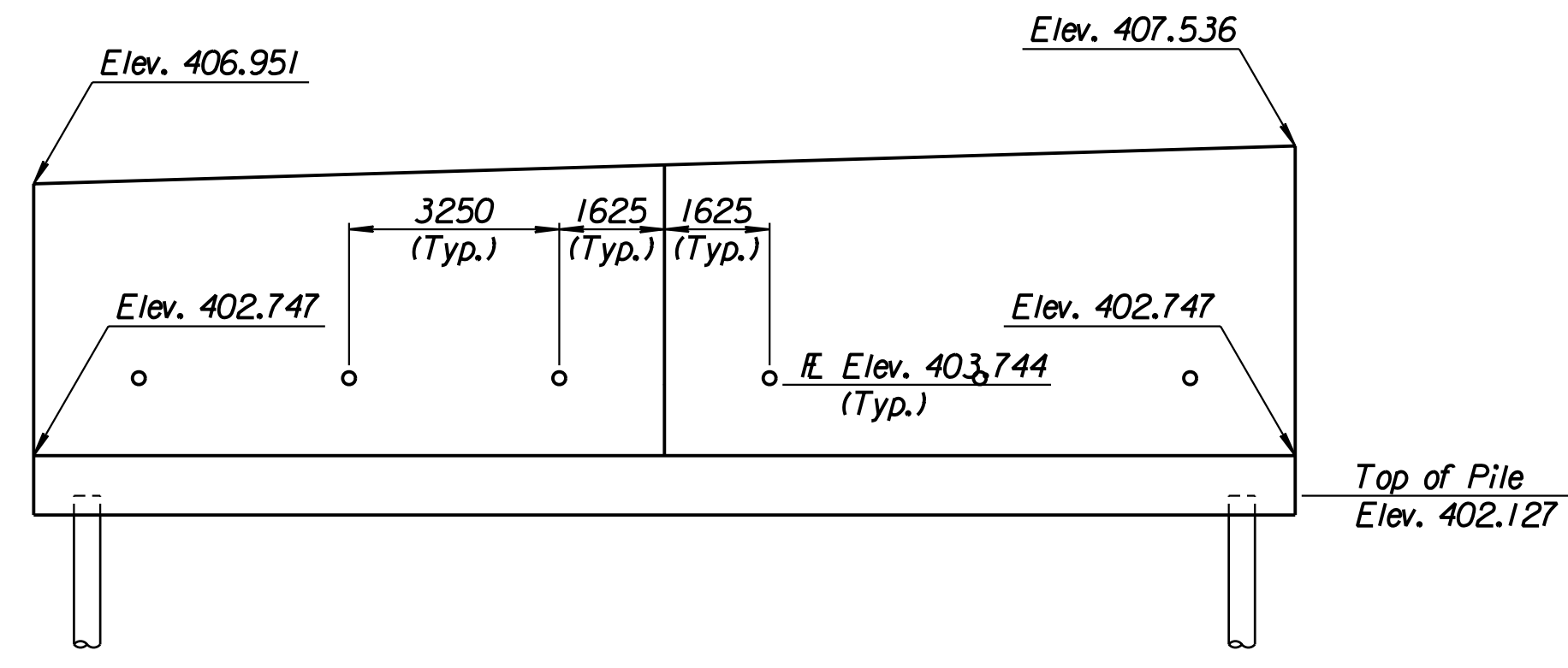
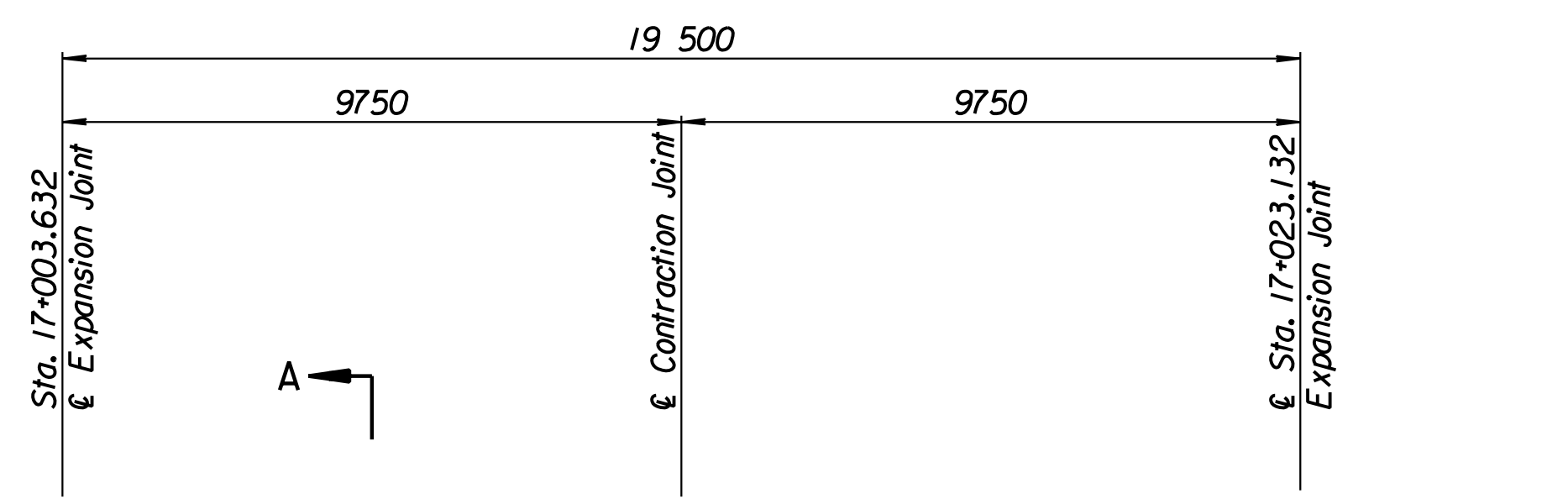


STATE	PROJECT NO.	YEAR	SHEET NO.	TOTAL SHEETS
KANSAS	54-87 K-6657-01	2002	360	1122

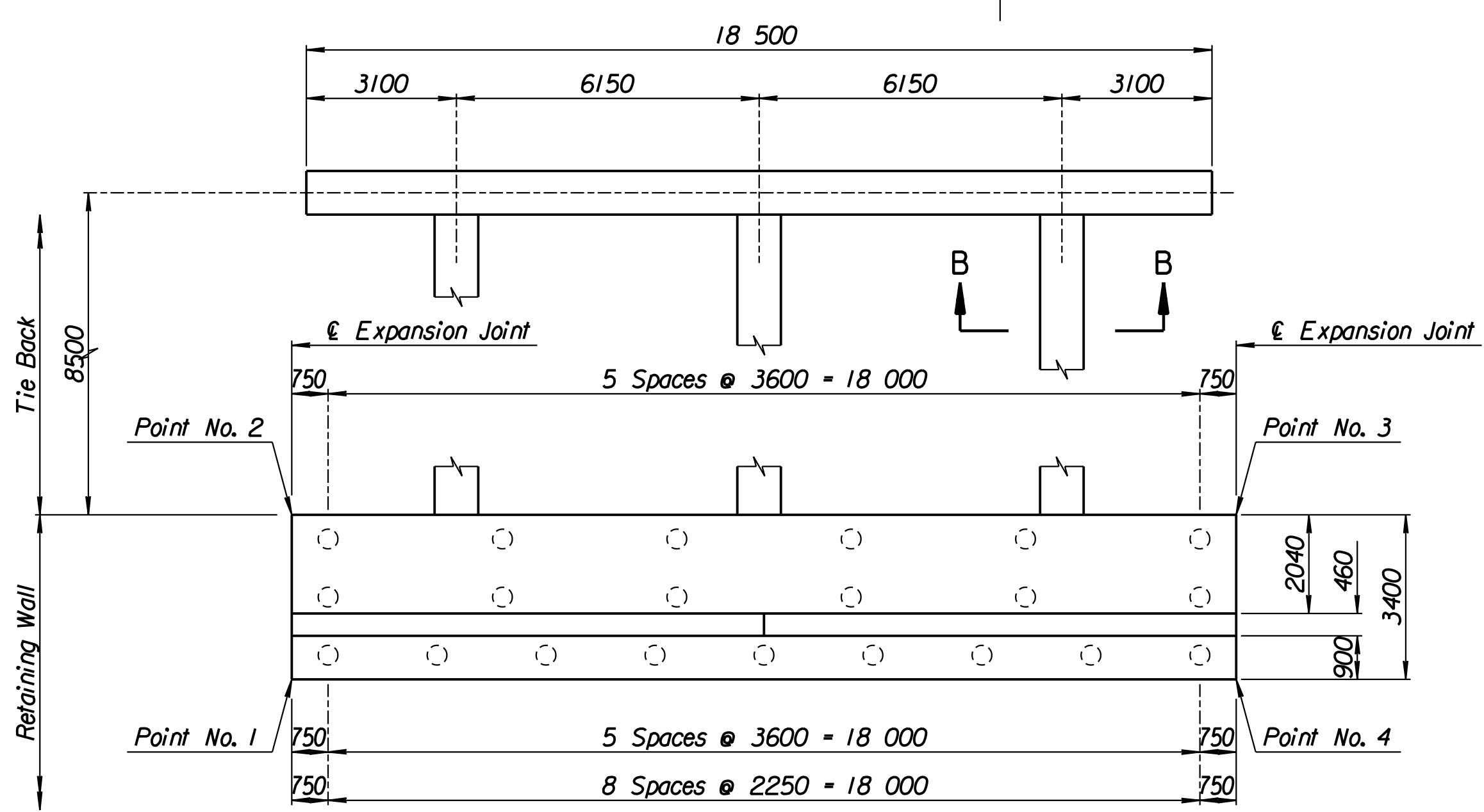
LAYOUT INFORMATION				
Point No.	North Coordinate	East Coordinate	Station	Offset
1	511848.650	492922.051	17+003.632	19.395 Rt.
2	511851.734	492920.618	17+003.632	15.995 Rt.
3	511859.948	492938.304	17+023.132	15.995 Rt.
4	511856.864	492939.736	17+023.132	19.395 Rt.

REINFORCING STEEL							
Straight Bars				Bent Bars			
Mark	Size	Number	Length	Mark	Size	Number	Length
K8-1	*25	164	3320	K8-3	*25	130	2990
K8-2	*25	44	10 670	K8-4	*19	66	1970
K8-5	*16	60	9650				
K8-6	*19	66	4050				
K8-7	*13	66	4740				
K8-8	*29	36	4000				

WALL QUANTITIES		
Item	Quantity	Unit
Pressure Grouted Pile (406 mm)	252.0	m
Concrete (Grade 30)(AE)	101.1	m <sup>3</sup>
Reinforcing Steel (Grade 420)	8399	kg
Class III Excavation	154.1	m <sup>3</sup>



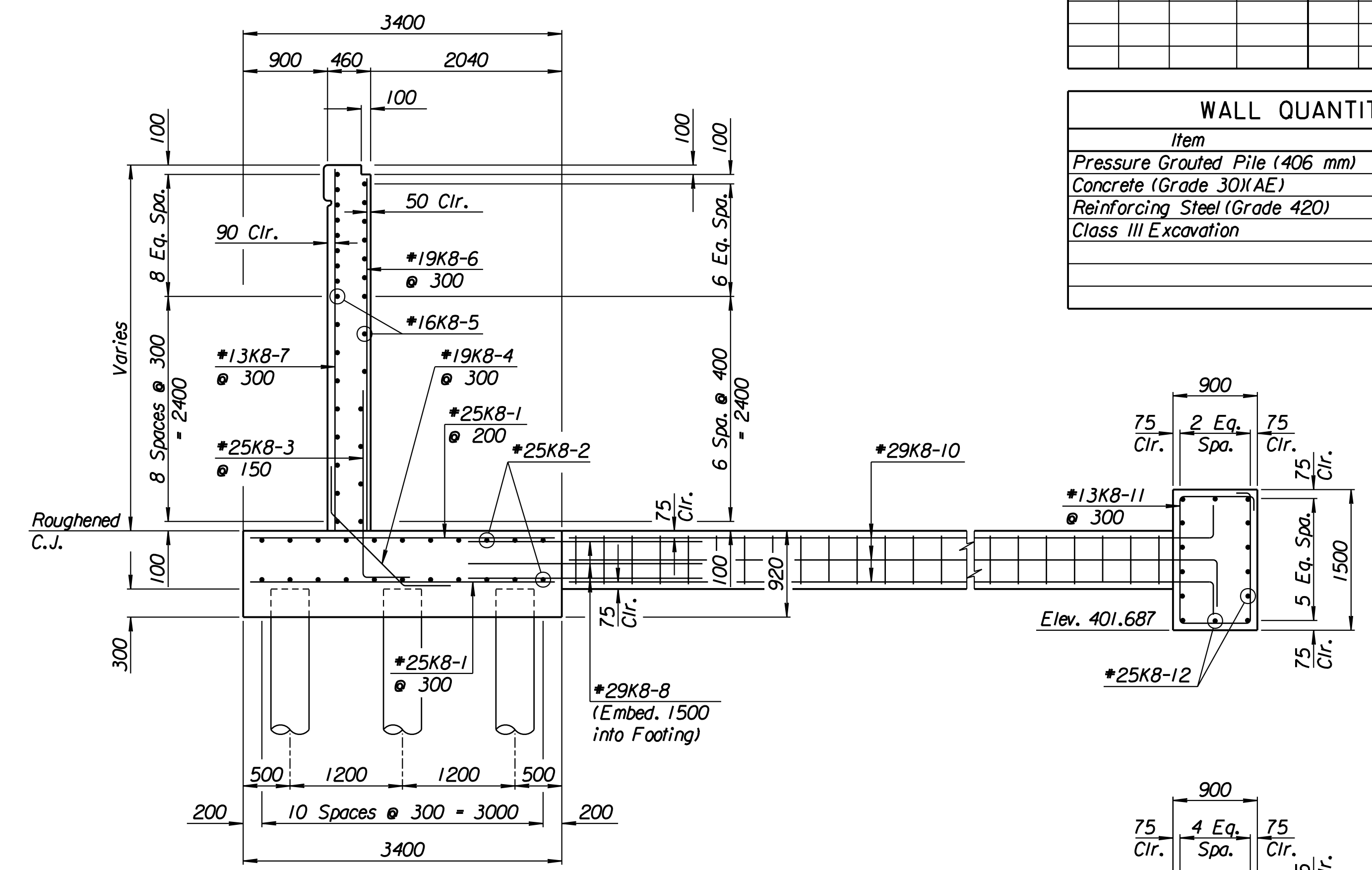
ELEVATION



PLAN

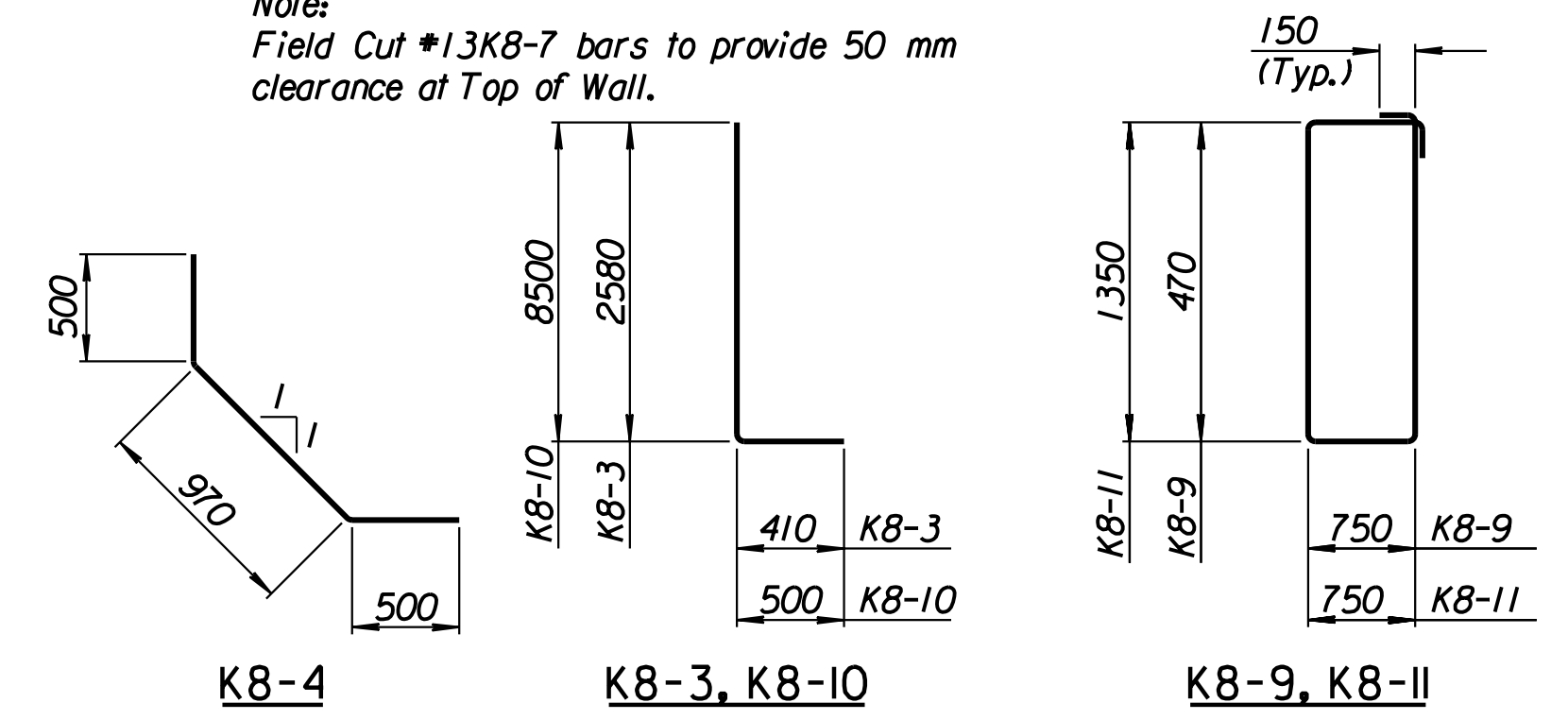
TIE BACK REINFORCING STEEL							
Straight Bars			Bent Bars				
Mark	Size	Number	Length	Mark	Size	Number	Length
K8-12	*25	28	10 170	K8-9	*13	81	2740
				K8-10	*29	36	9000
				K8-11	*13	63	4500

TIE BACK QUANTITIES		
Item	Quantity	Unit
Concrete (Grade 30)(AE)	38.5	m <sup>3</sup>
Reinforcing Steel (Grade 420)	3273	kg



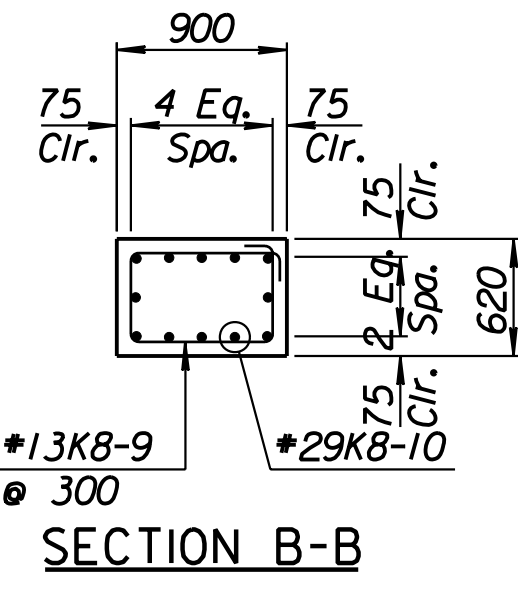
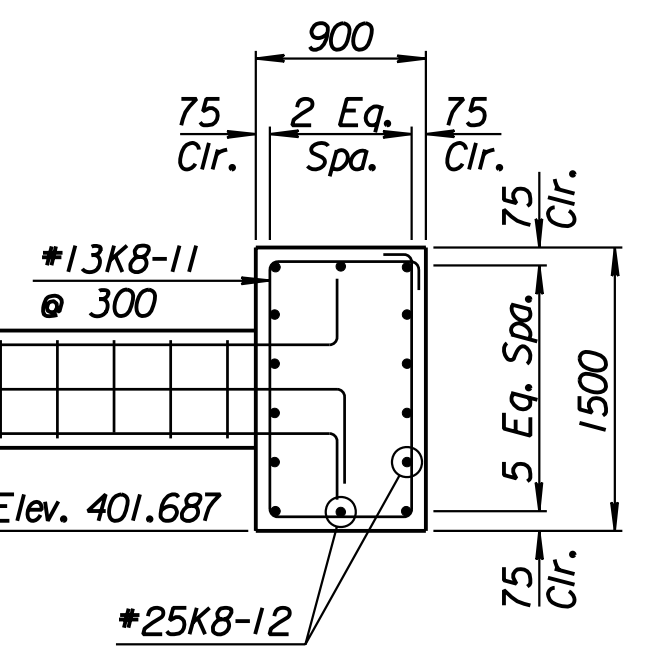
SECTION A-A

Note:  
Field Cut #13K8-7 bars to provide 50 mm clearance at Top of Wall.



BENDING DIAGRAMS

All dimensions are out to out of bars.



SECTION B-B

1			
No.	Revisions	By	Date
CITY OF WICHITA			
<b>TYLER SOUTHWEST WALL</b>			
STA. 17+003.632 TO STA. 17+023.132			
SEDGWICK COUNTY			
<b>Professional Engineering Consultants, P.A.</b> 303 S. TOPEKA • WICHITA, KANSAS 67202 316-262-2691 • FAX 316-262-3003			
Designed by	P.D.F.	Checked by	R.A.S.
Drawn by	W.L.L.	Date	April, 2002
		Job No.	97362

Drawn by: wil  
 Plotted by: drp  
 3-25-2002  
 I:\1997\97362\As-Built\tdgn\Vol 2\Sh 360-Tyler-SWWall-I.dgn Last Rev: 8-24-07 By: gdr