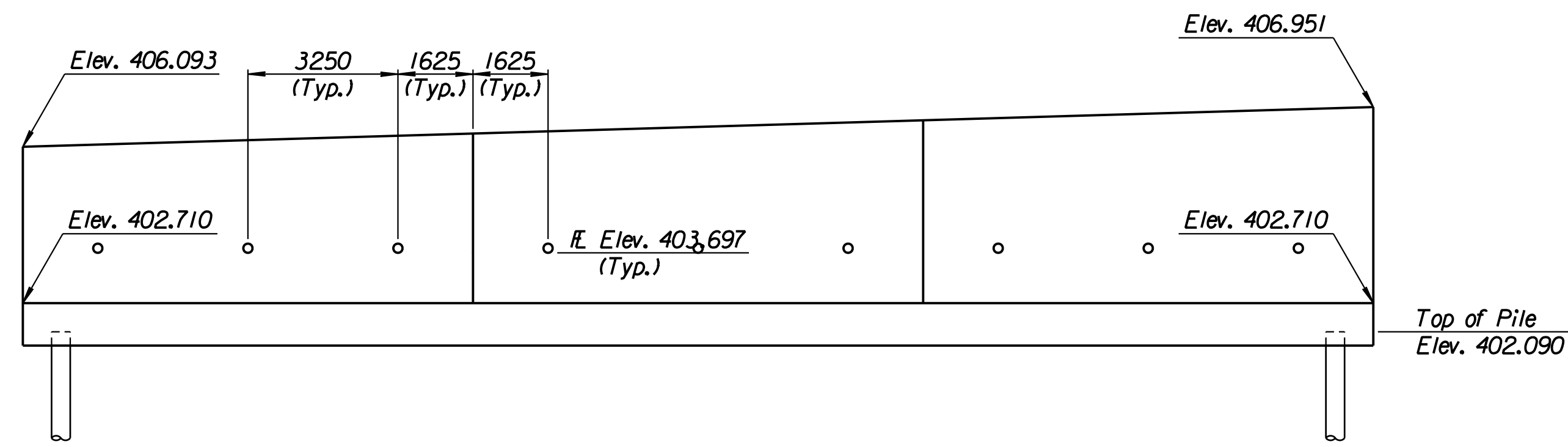
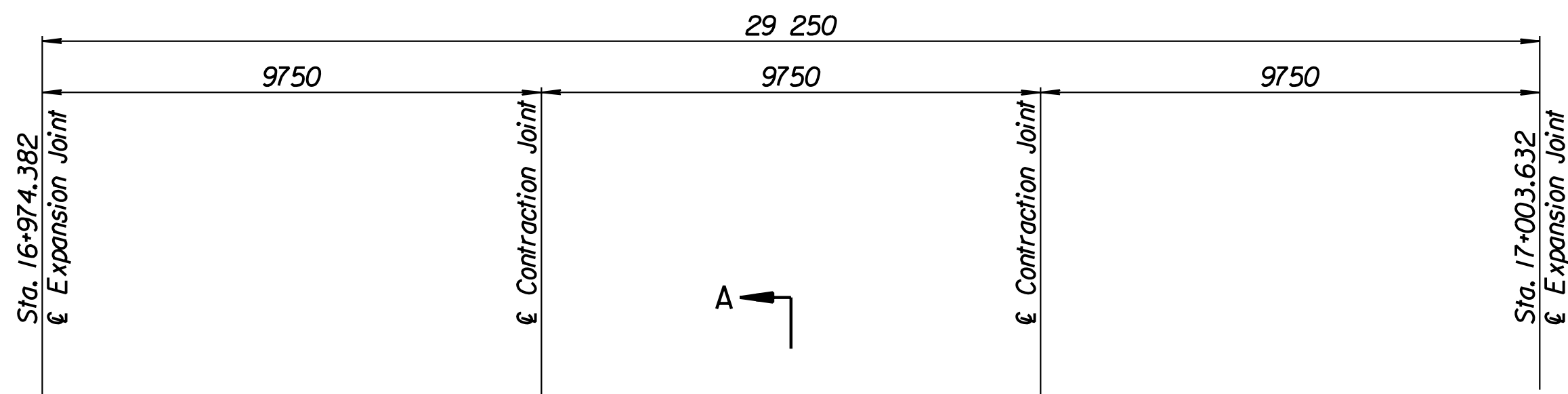


STATE	PROJECT NO.	YEAR	SHEET NO.	TOTAL SHEETS
KANSAS	54-87 K-6657-01	2002	361	1122

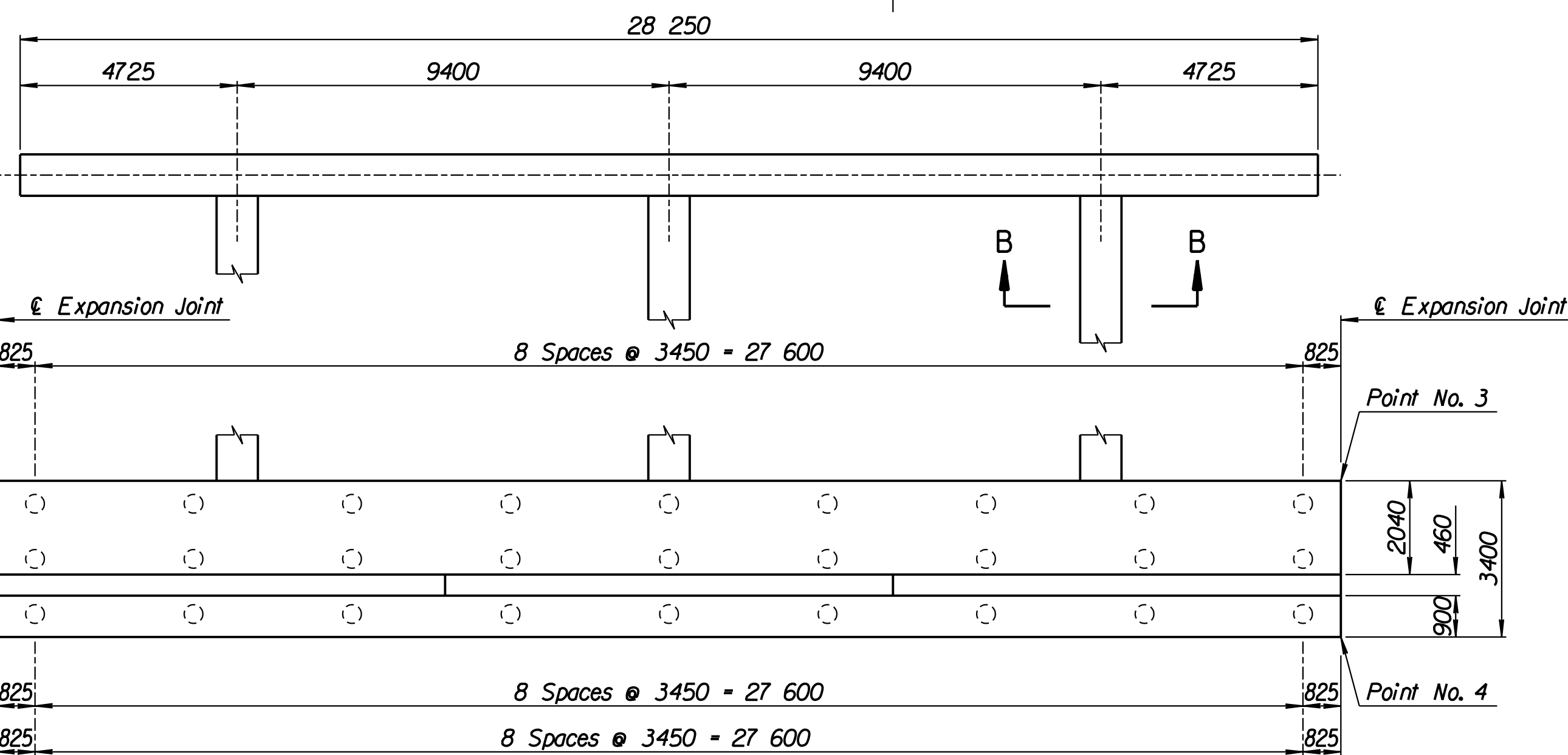
LAYOUT INFORMATION				
Point No.	North Coordinate	East Coordinate	Station	Offset
1	511836.328	492895.523	16+974.382	19.395 Rt.
2	511839.412	492894.090	16+974.382	15.995 Rt.
3	511851.734	492920.618	17+003.632	15.995 Rt.
4	511848.650	492922.051	17+003.632	19.395 Rt.

REINFORCING STEEL							
Straight Bars				Bent Bars			
Mark	Size	Number	Length	Mark	Size	Number	Length
L8-1	*25	246	3320	L8-3	*22	195	2870
L8-2	*25	44	15 540	L8-4	*16	99	1970
L8-5	*16	78	9650				
L8-6	*19	99	3230				
L8-7	*13	99	4190				
L8-8	*29	36	4000				

WALL QUANTITIES		
Item	Quantity	Unit
Pressure Grouted Pile (406 mm)	324.0	m
Concrete (Grade 30)(AE)	142.5	m ³
Reinforcing Steel (Grade 420)	10 990	kg
Class III Excavation	241.1	m ³



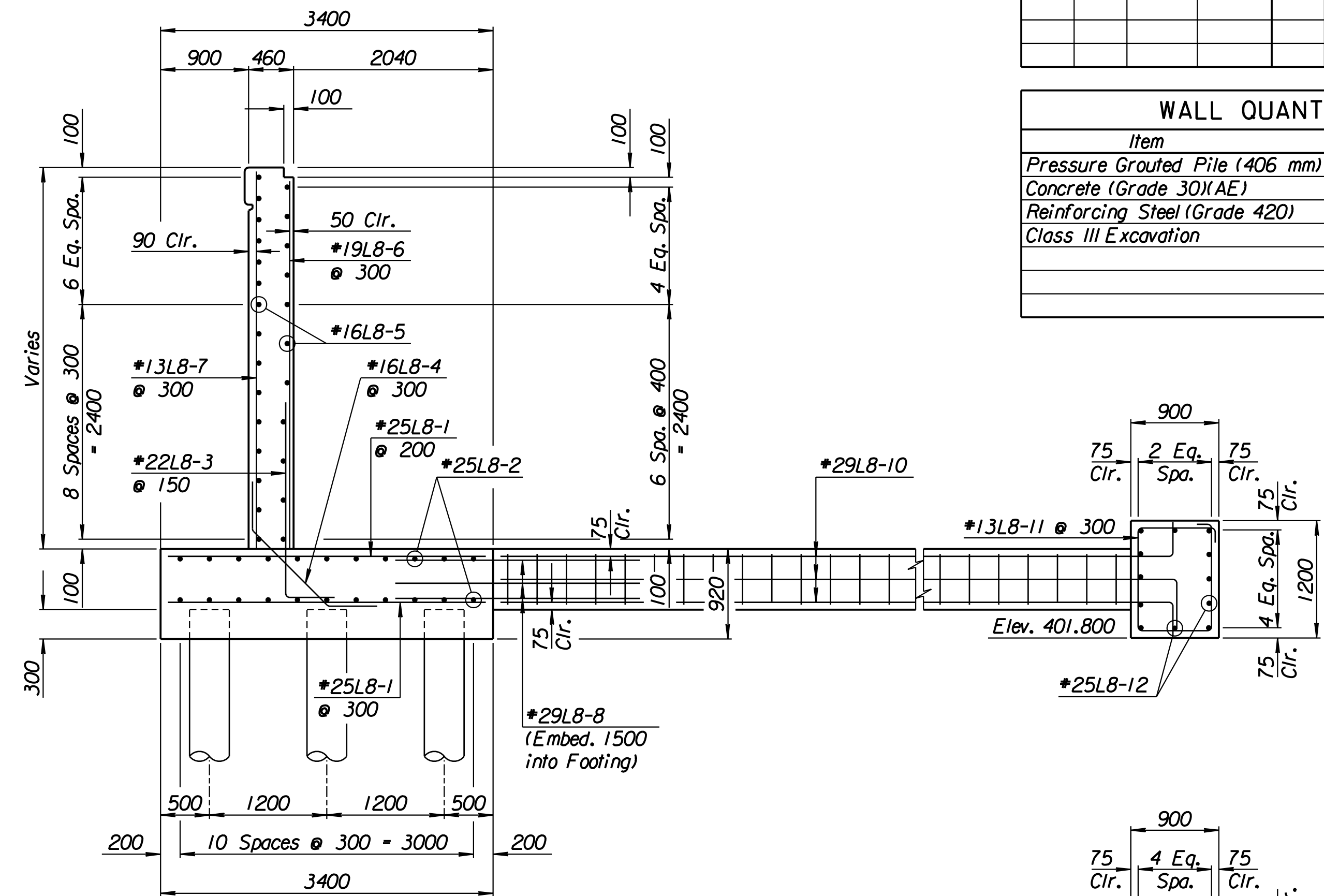
ELEVATION



PLAN

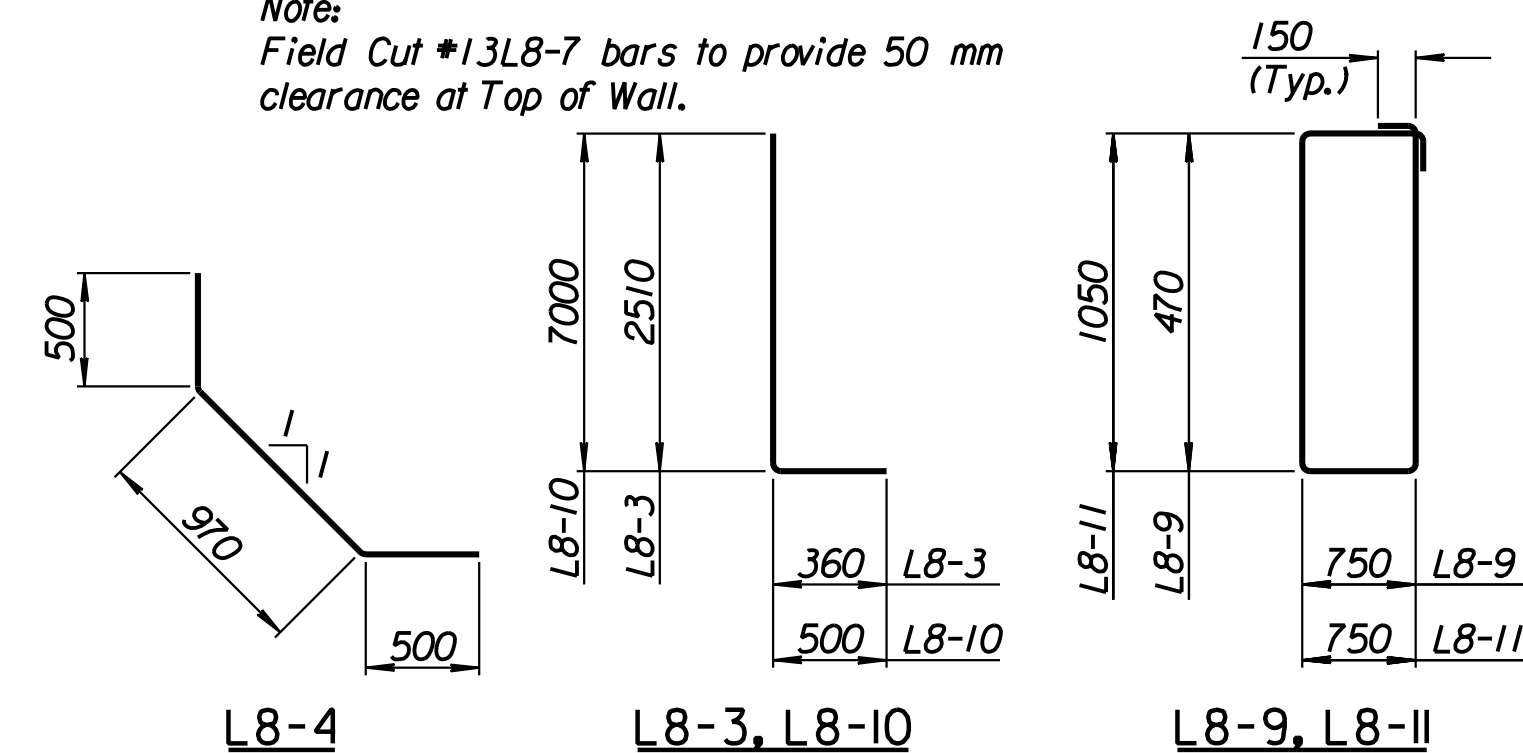
TIE BACK REINFORCING STEEL							
Straight Bars			Bent Bars				
Mark	Size	Number	Length	Mark	Size	Number	Length
L8-12	*25	24	15 040	L8-9	*13	66	2740
				L8-10	*29	36	7500
				L8-11	*13	94	3900

TIE BACK QUANTITIES		
Item	Quantity	Unit
Concrete (Grade 30)(AE)	41.5	m ³
Reinforcing Steel (Grade 420)	3344	kg



SECTION A-A

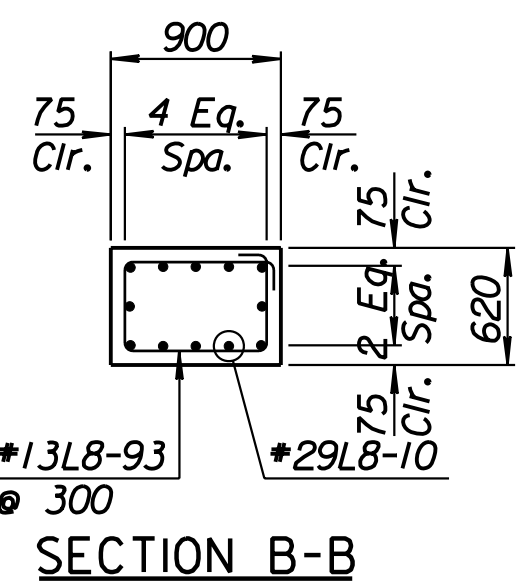
Note:
Field Cut #13L8-7 bars to provide 50 mm clearance at Top of Wall.



BENDING DIAGRAMS

All dimensions are out to out of bars.

RECORD DRAWING



SECTION B-B

No.	Revisions	By	Date
-----	-----------	----	------

CITY OF WICHITA
TYLER SOUTHWEST WALL
 STA. 16+974.382 TO STA. 17+003.632
 SEDGWICK COUNTY

Professional Engineering Consultants, P.A.
 303 S. TOPEKA • WICHITA, KANSAS 67202
 316-262-2691 • FAX 316-262-3003

Designed by	P.D.F.	Checked by	R.A.S.
Drawn by	W.L.L.	Date	April 11, 2002
		Job No.	97362

Drawn by: wil
 Plotted by: drp
 3-25-2002
 1:1997197362/As-Built/s/dgn/s/Vol 2/Sh 361-Tyler-SWwall-1.dgn Last Rev: 8-24-07 By: gdr