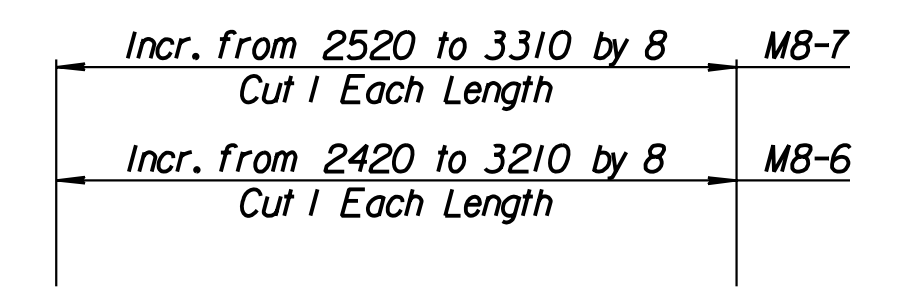
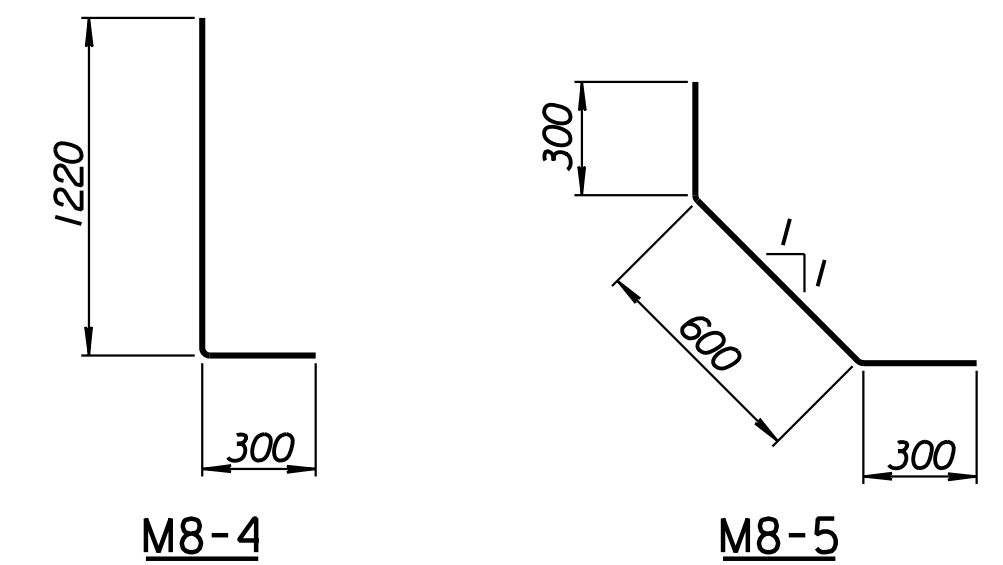


STATE	PROJECT NO.	YEAR	SHEET NO.	TOTAL SHEETS
KANSAS	54-87 K-6657-01	2002	362	1122

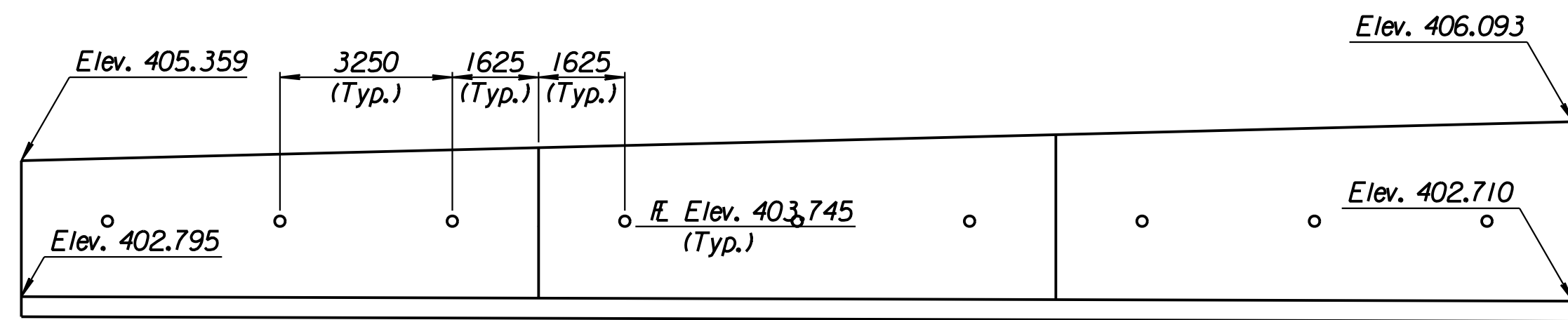
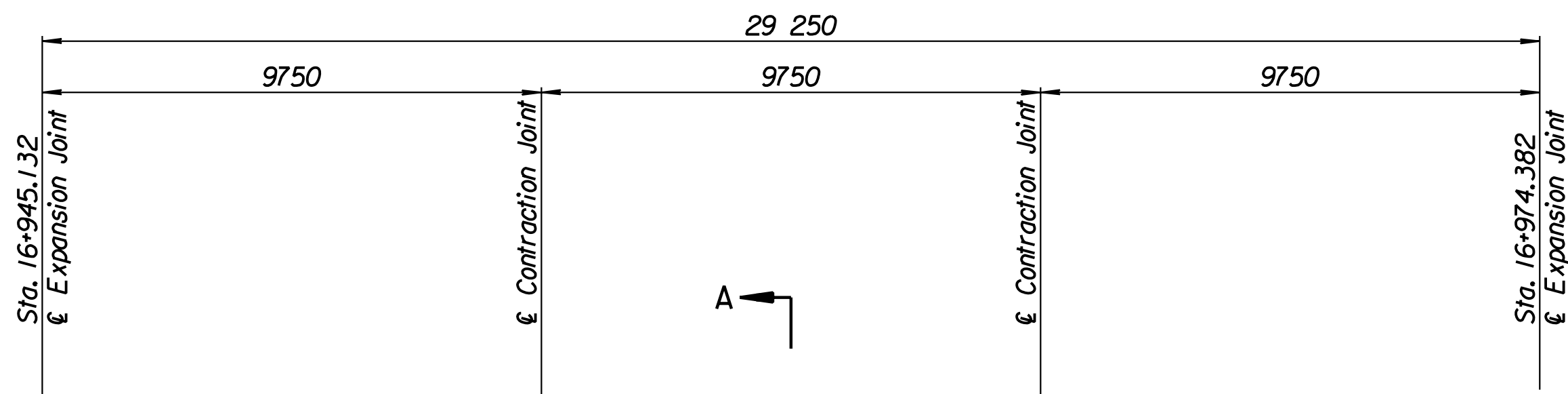
LAYOUT INFORMATION				
Point No.	North Coordinate	East Coordinate	Station	Offset
1	511824.006	492868.995	16+945.132	19.395 Rt.
2	511828.178	492867.057	16+945.132	14.795 Rt.
3	511840.500	492893.585	16+974.382	14.795 Rt.
4	511836.328	492895.523	16+974.382	19.395 Rt.

REINFORCING STEEL							
Straight Bars				Bent Bars			
Mark	Size	Number	Length	Mark	Size	Number	Length
M8-1	*16	99	4520	M8-4	*19	195	1520
M8-2	*19	147	4520	M8-5	*13	99	1200
M8-3	*13	60	14 960				
M8-6	*16	99	Varies				
M8-7	*13	99	Varies				
M8-8	*13	63	9650				

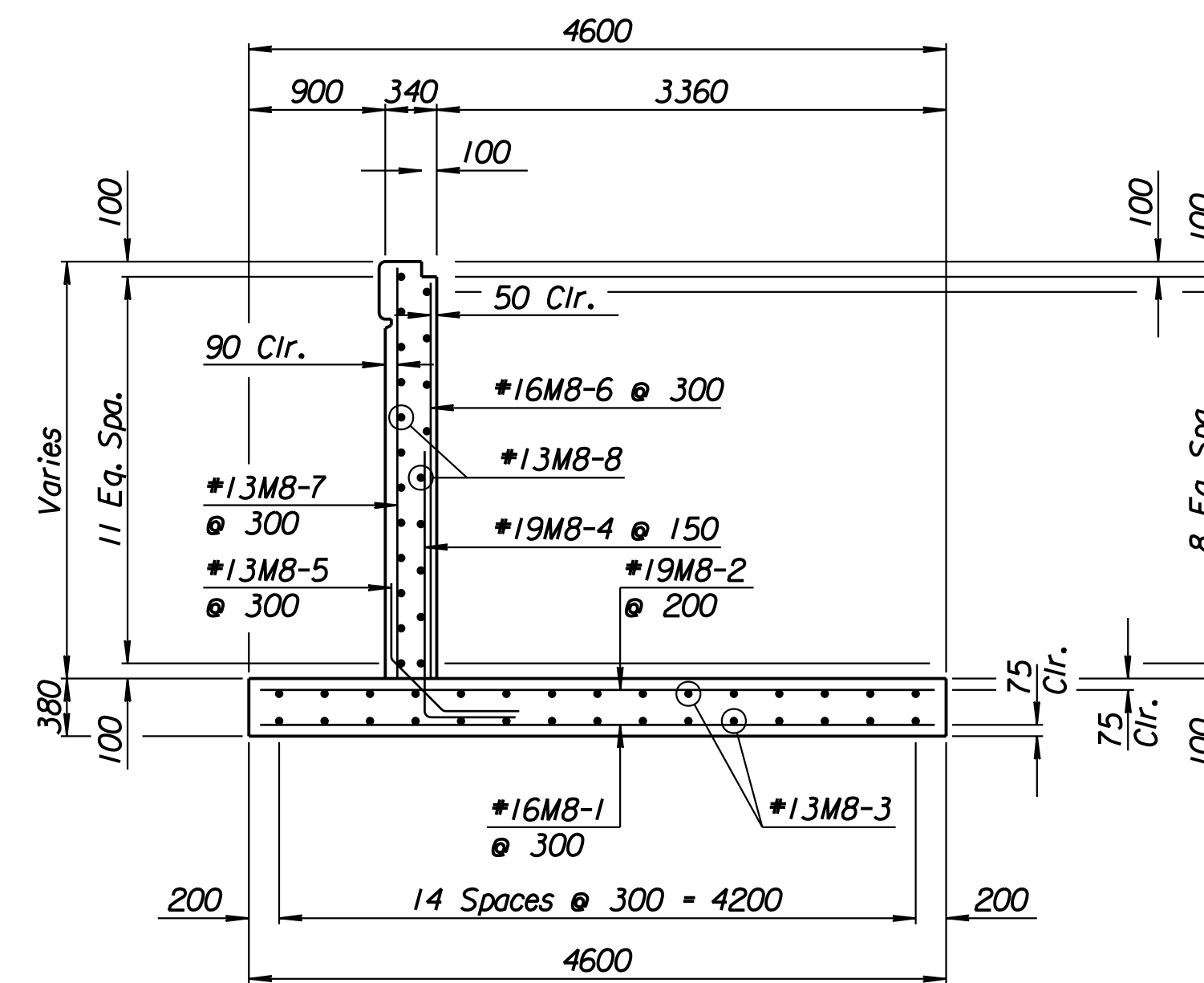
WALL QUANTITIES		
Item	Quantity	Unit
Concrete (Grade 30)(AE)	80.4	m ³
Reinforcing Steel (Grade 420)	5176	kg
Class III Excavation	225.2	m ³



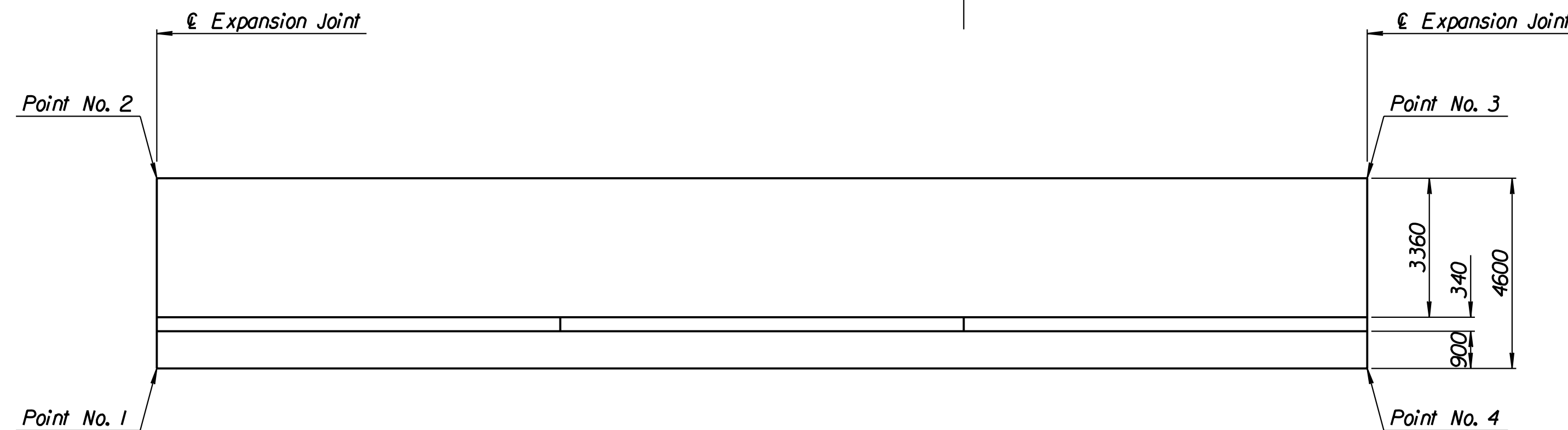
BENDING DIAGRAMS
All dimensions are out to out of bars.



ELEVATION



SECTION A-A



PLAN

Drawn by: wil
 Plotted by: drp
 3-25-2002
 I:/1997/97362/As-Built/dgn/s/Vol 2/Sh 362-Tyler-SWwall-12.dgn Last Rev: 8-24-07 By: gdr

RECORD DRAWING

1			
No.	Revisions	By	Date
CITY OF WICHITA			
TYLER SOUTHWEST WALL			
STA. 16+945.132 TO STA. 16+974.382			
SEDGWICK COUNTY			
Professional Engineering Consultants, P.A. <small>303 S. TOPEKA • WICHITA, KANSAS 67202 316-262-2691 • FAX 316-262-3003</small>			
Designed by	P.D.F.	Checked by	R.A.S.
Drawn by	W.L.L.	Date	April, 2002
		Job No.	97362