

STATE	PROJECT NO.	YEAR	SHEET NO.	TOTAL SHEETS
KANSAS	54-87 K-6657-01	2002	365	1122

**REINFORCING STEEL**

Straight Bars				Bent Bars			
Mark	Size	Number	Length	Mark	Size	Number	Length
F1	*16	175	1 120	F3	*13	66	900
F2	*16	594	1 420				
F4	*13	6	5 900	S1	*10	769	1 035
F5	*13	12	8 800				
F6	*13	35	10 000	V1	*16	20	1 500
F7	*13	28	10 400	V2	*16	27	1 880
F8	*13	21	10 900	V3	*16	27	1 980
F9	*13	35	11 600	V4	*16	27	2 060
F10	*13	18	11 000	V5	*16	27	2 120
				V6	*16	27	2 200
H1	*13	14	5 900	V7	*16	27	2 280
H2	*13	296	7 900	V8	*16	27	2 380
				V9	*16	27	2 460
W1	*13	20	920	V10	*16	27	2 240
W2	*13	27	1 300	V11	*16	27	2 340
W3	*13	27	1 400	V12	*16	27	2 420
W4	*13	27	1 480	V13	*16	27	2 480
W5	*13	27	1 540	V14	*16	27	2 540
W6	*13	27	1 620	V15	*16	27	2 260
W7	*13	27	1 700	V16	*16	27	2 260
W8	*13	27	1 800	V17	*16	27	2 260
W9	*13	27	1 880	V18	*16	27	2 220
W10	*13	27	1 660	V19	*16	27	2 480
W11	*13	27	1 760	V20	*16	27	2 400
W12	*13	27	1 840	V21	*16	27	2 320
W13	*13	27	1 900	V22	*16	27	2 200
W14	*13	27	1 960	V23	*16	27	2 080
W15	*13	27	1 680	V24	*16	27	1 920
W16	*13	27	1 680	V25	*16	27	1 760
W17	*13	27	1 680	V26	*16	27	1 920
W18	*13	27	1 640	V27	*16	27	1 760
W19	*13	27	1 900	V28	*16	27	1 620
W20	*13	27	1 820	V29	*16	20	1 500
W21	*13	27	1 740				
W22	*13	27	1 620				
W23	*13	27	1 500				
W24	*13	27	1 340				
W25	*13	27	1 180				
W26	*13	27	1 340				
W27	*13	27	1 180				
W28	*13	27	1 040				
W29	*13	20	920				

**\*16V WALL VERTICAL REINFORCING "A" DIMENSION**

*16V1	1 050	*16V20	1 950
*16V2	1 430	*16V21	1 870
*16V3	1 530	*16V22	1 750
*16V4	1 610	*16V23	1 630
*16V5	1 670	*16V24	1 470
*16V6	1 750	*16V25	1 310
*16V7	1 830	*16V26	1 470
*16V8	1 930	*16V27	1 310
*16V9	2 010	*16V28	1 170
*16V10	1 790	*16V29	1 050
*16V11	1 890		
*16V12	1 970		
*16V13	2 030		
*16V14	2 090		
*16V15	1 810		
*16V16	1 810		
*16V17	1 810		
*16V18	1 770		
*16V19	2 030		

**GENERAL NOTES:**

**CONCRETE:** Concrete (Grade 30)(AE) shall be used throughout. Chamfer exposed edges with a 20 mm triangular moulding. Exposed surfaces shall be given a rubbed finish.

**FORM LINER:** Architectural form liner panels shall match other wall patterns on this project. Add backup strips as recommended by the manufacturer.

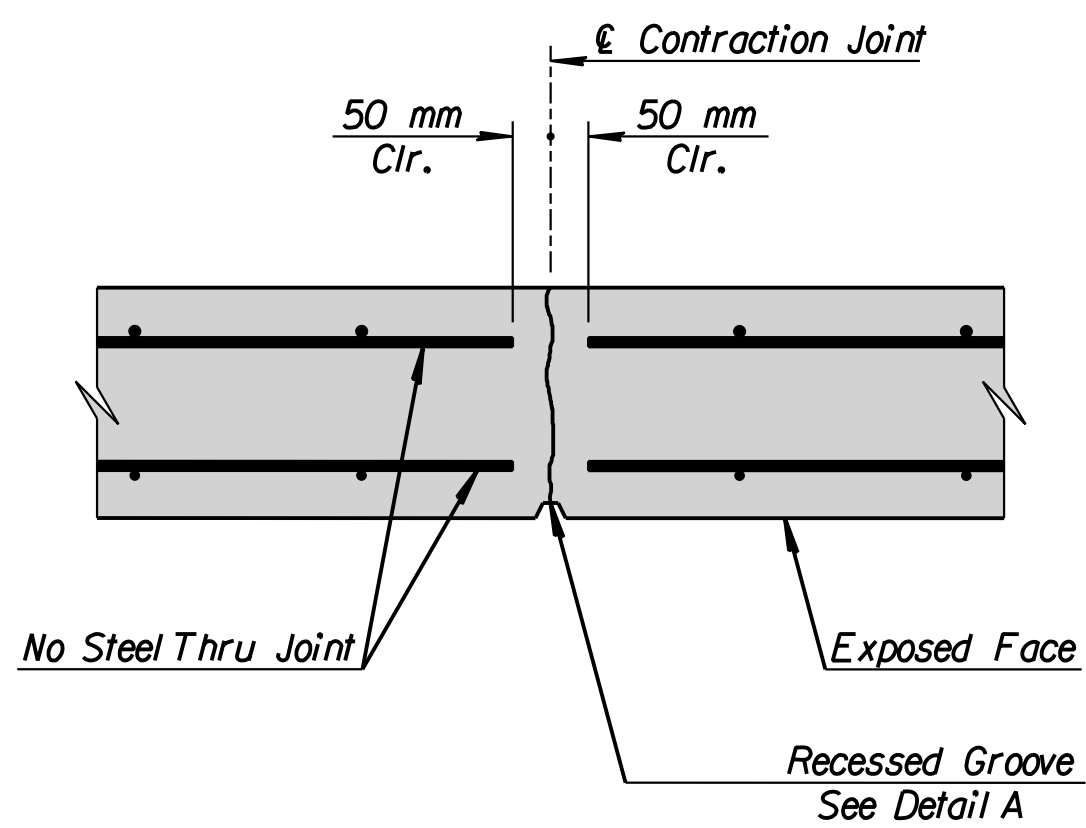
**REINFORCING:** All Reinforcing shall conform to ASTM A615M, Grade 420. All dimensions relative to reinforcing steel shall be to centerline of bar unless otherwise noted. Bar clearances shall be 40 mm unless otherwise noted.

**EXCAVATION:** All excavation for the retaining walls shall be Class III Excavation. Pay limits are from bottom of footing to 300 mm beyond each edge where in cut.

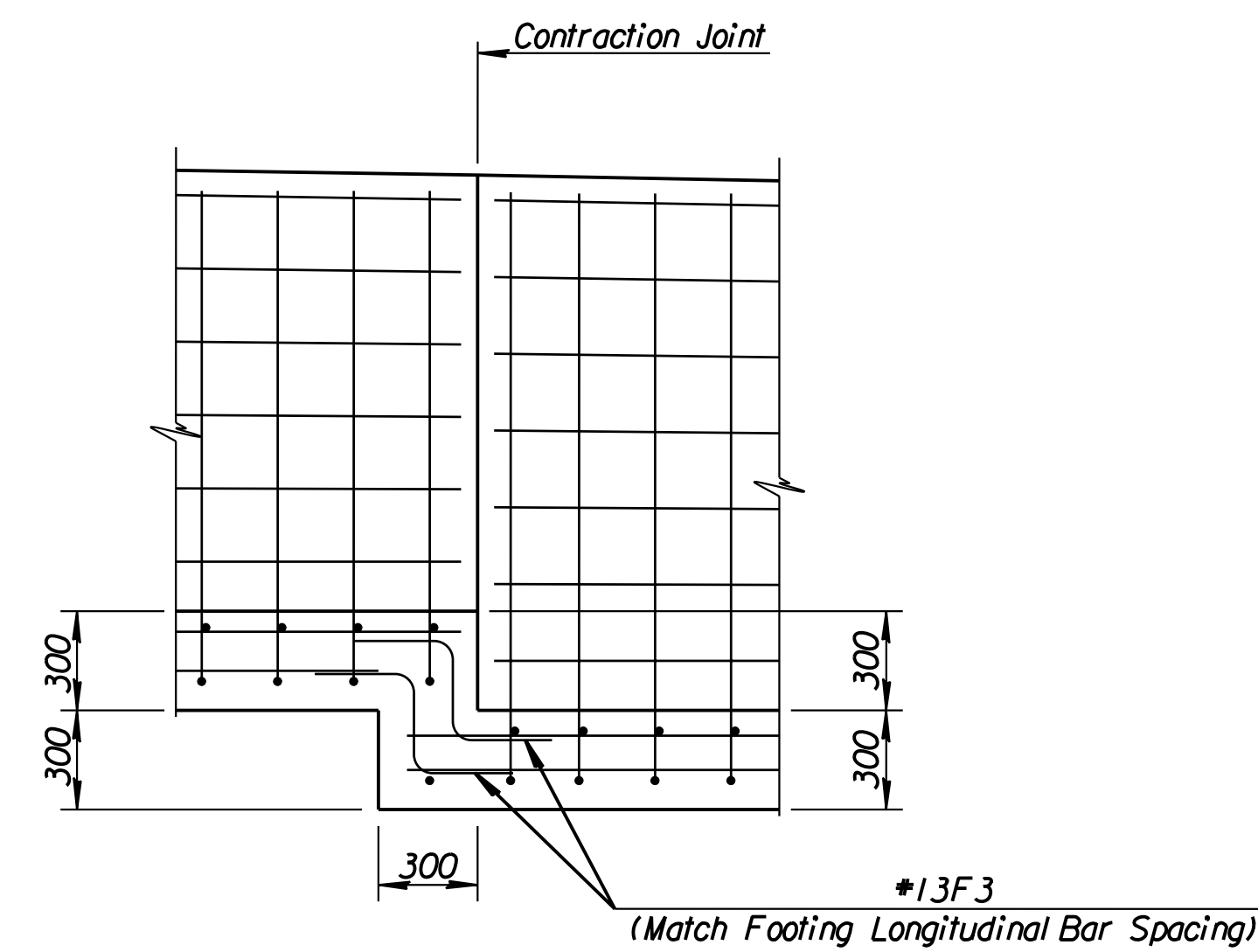
**COARSE AGGERATE FILL:** Coarse aggregate fill shall meet the requirements of Subsection 1102.02(a) for CA-4 or CA-5 of the Standard Specifications.

**COMPACTION:** Required compaction shall be made using small equipment which will not create additional stress against the retaining wall stem.

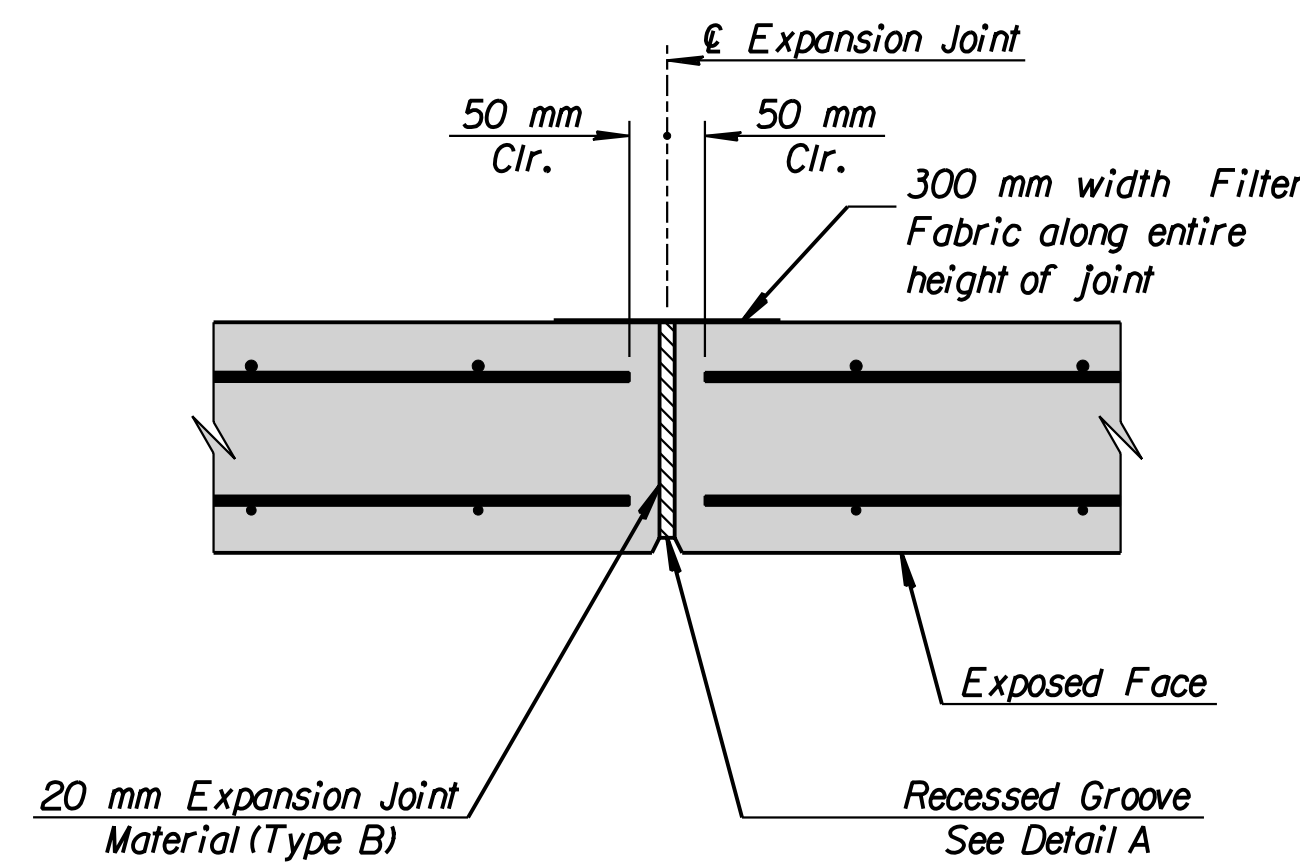
**EXPANSION JOINT MATERIAL:** Type B Expansion Joint Material shall conform to Section 1503 of the Standard Specifications. The Expansion Joint Material and 300 mm Filter Fabric shall be Subsidiary to the Bid Item "Concrete (Grade 30)(AE)".



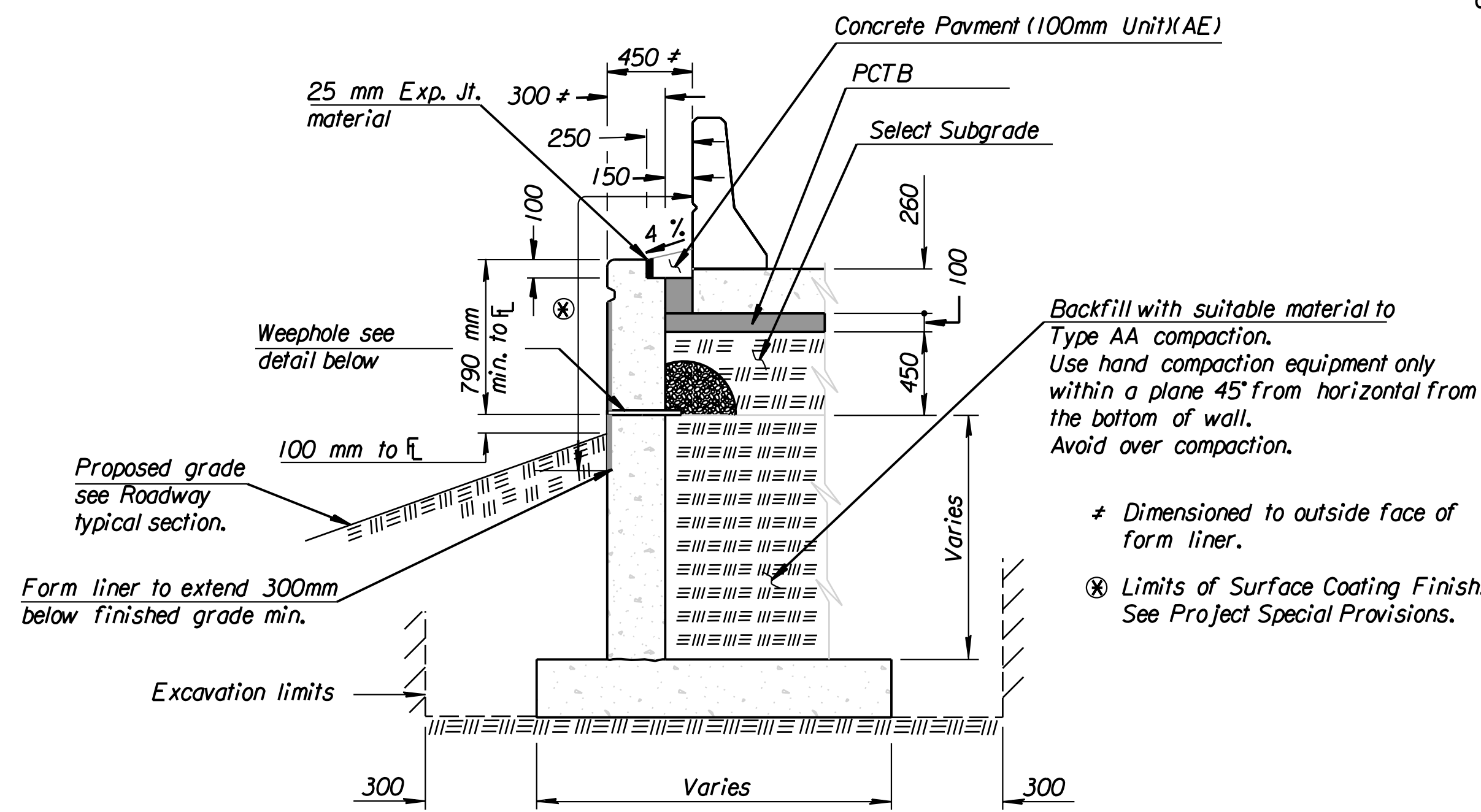
**CONTRACTION JOINT DETAIL**



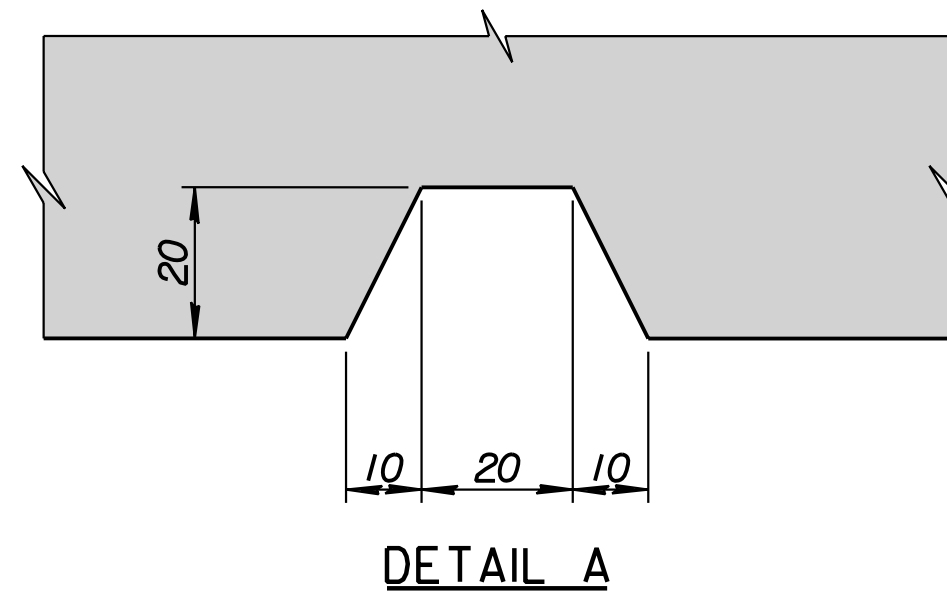
**FOOTING STEP ELEVATION**



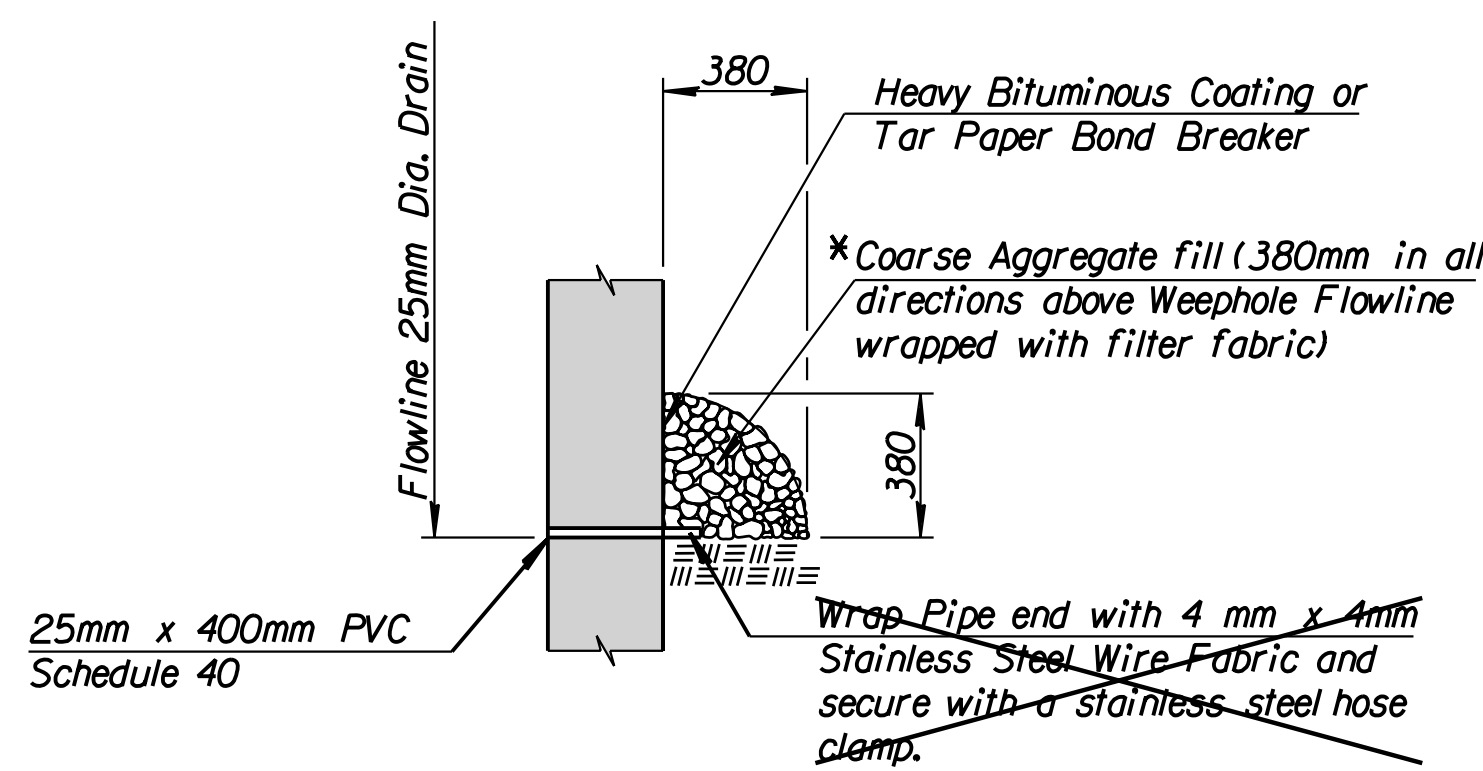
**EXPANSION JOINT DETAIL**



**SECTION THRU RETAINING WALL**



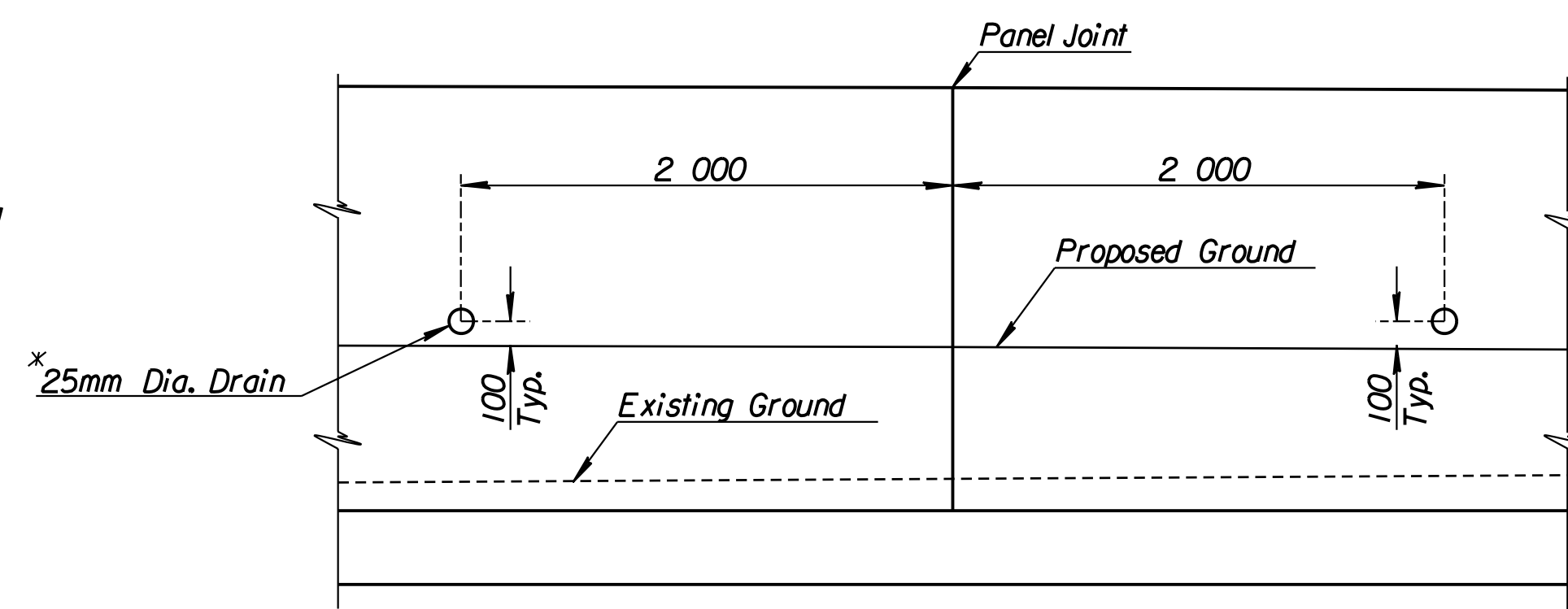
**DETAIL A**



**WEEPHOLE DETAIL**

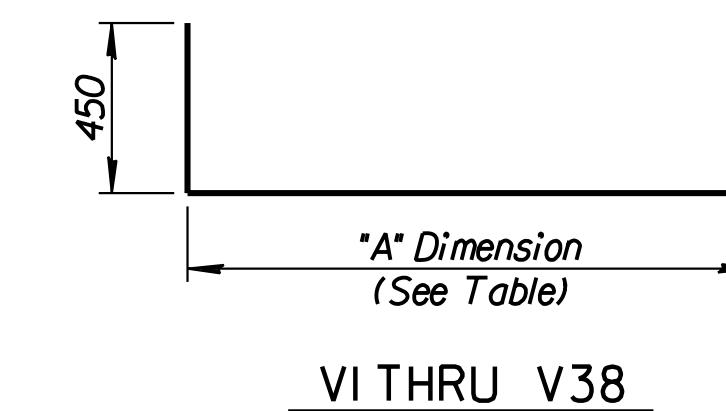
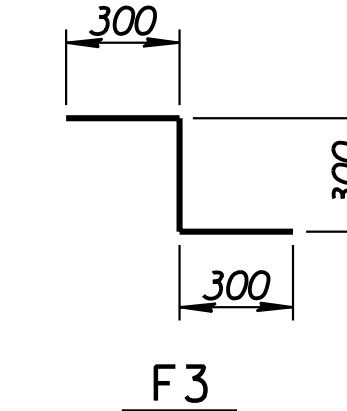
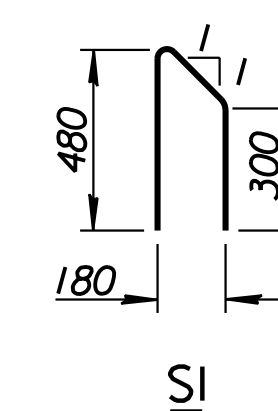
See weephole location detail for weep hole locations.

\* Filter fabric, PVC pipe, clamp, stainless steel wire fabric, and coarse aggregate fill shall be Subsidiary.



**WEEPHOLE LOCATION DETAIL**

( Use for sections 4 thru 22 )



**BENDING DIAGRAMS**

All Dimensions are out to out of bars.

**SUMMARY OF QUANTITIES**

Concrete (Grade 30)(AE)	212.0 m <sup>3</sup>
Reinforcing Steel (GR. 420)	9890 kg
Class III Excavation	27.3 m <sup>3</sup>
Surface Coating Finish	376.3 s.m.

No.	Revisions	By	Date
-----	-----------	----	------

**CITY OF WICHITA  
GENERAL NOTES AND  
REINFORCING DETAILS  
RETAINING WALL #9**

SEDGWICK COUNTY

**Professional Engineering Consultants, P.A.**  
303 S. TOPEKA - WICHITA, KANSAS 67202  
316-262-2691 • FAX 316-262-3003

Designed by	SET	Checked by	R.A.S.
Drawn by	DWK	Date	April, 2002
		Job No.	97362

**RECORD DRAWING**