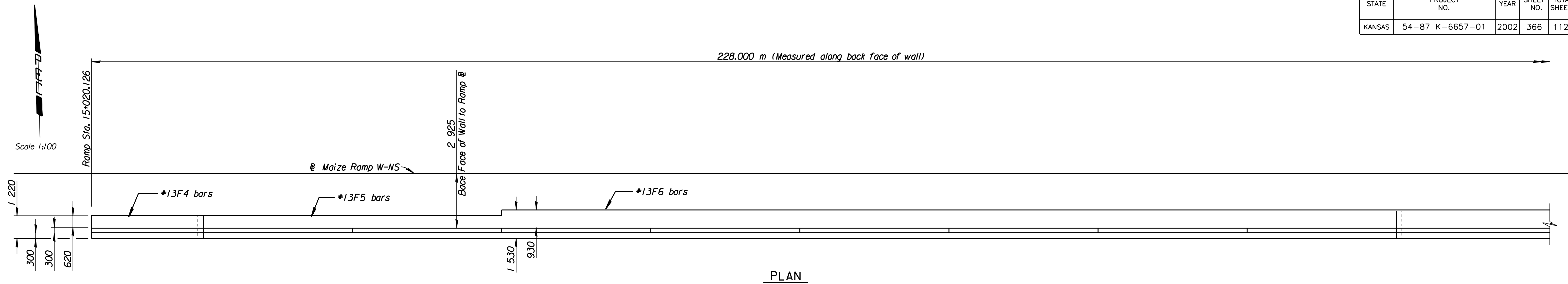
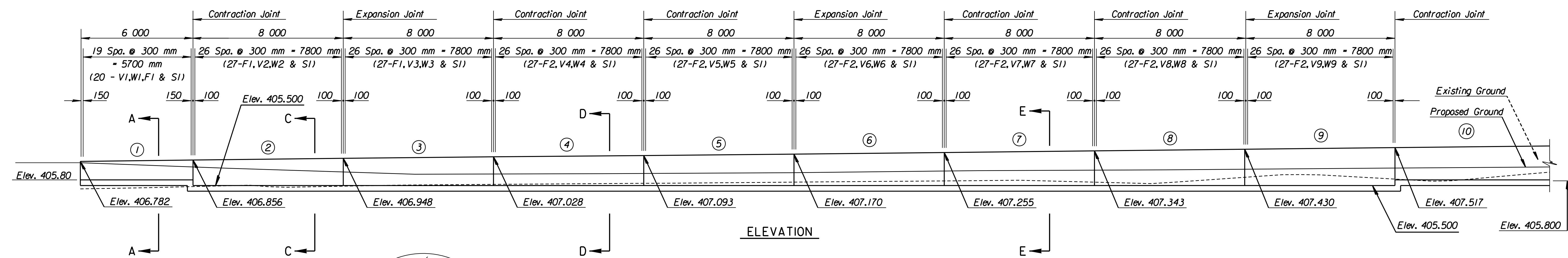


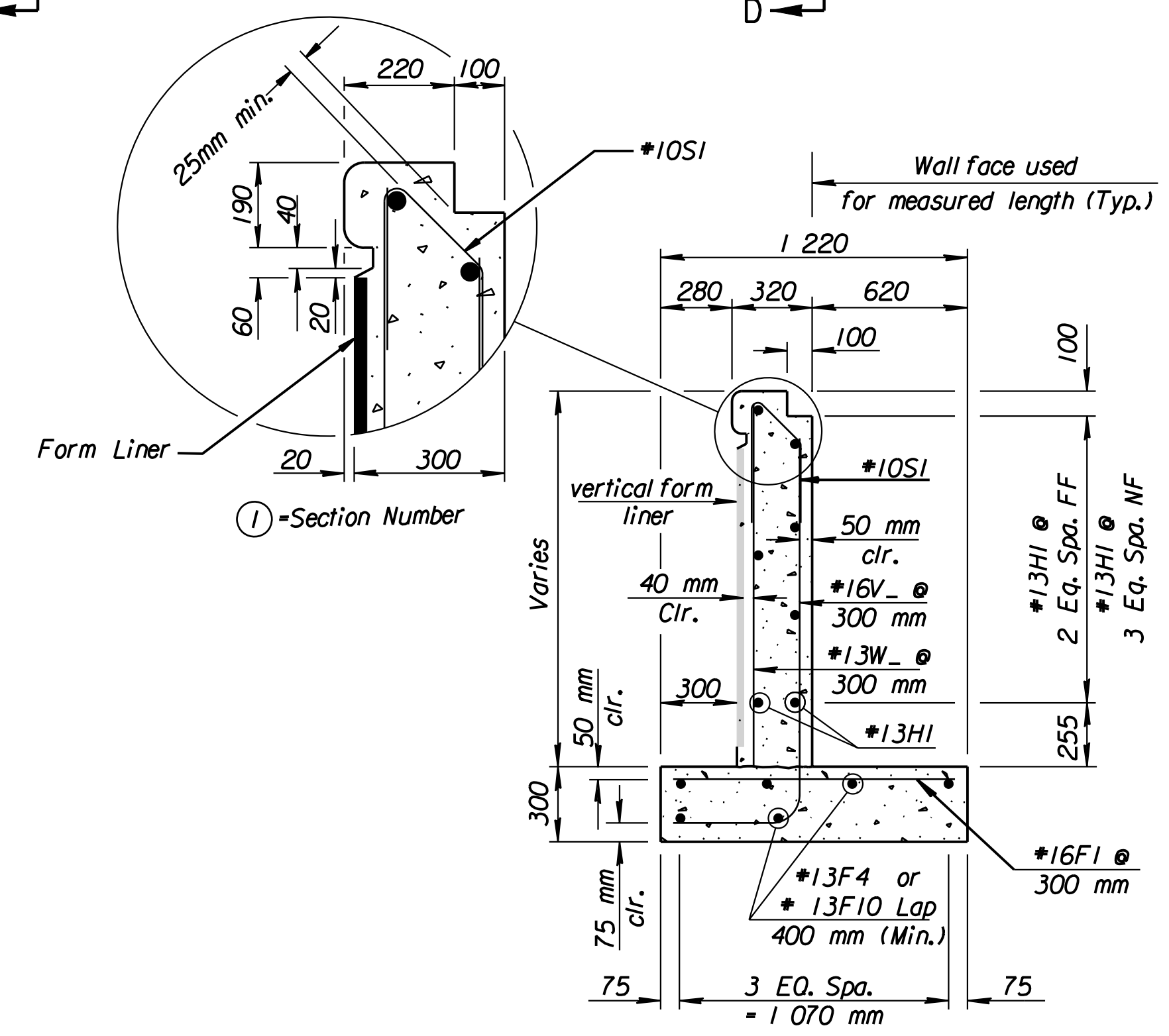
STATE	PROJECT NO.	YEAR	SHEET NO.	TOTAL SHEETS
KANSAS	54-87 K-6657-01	2002	366	1122



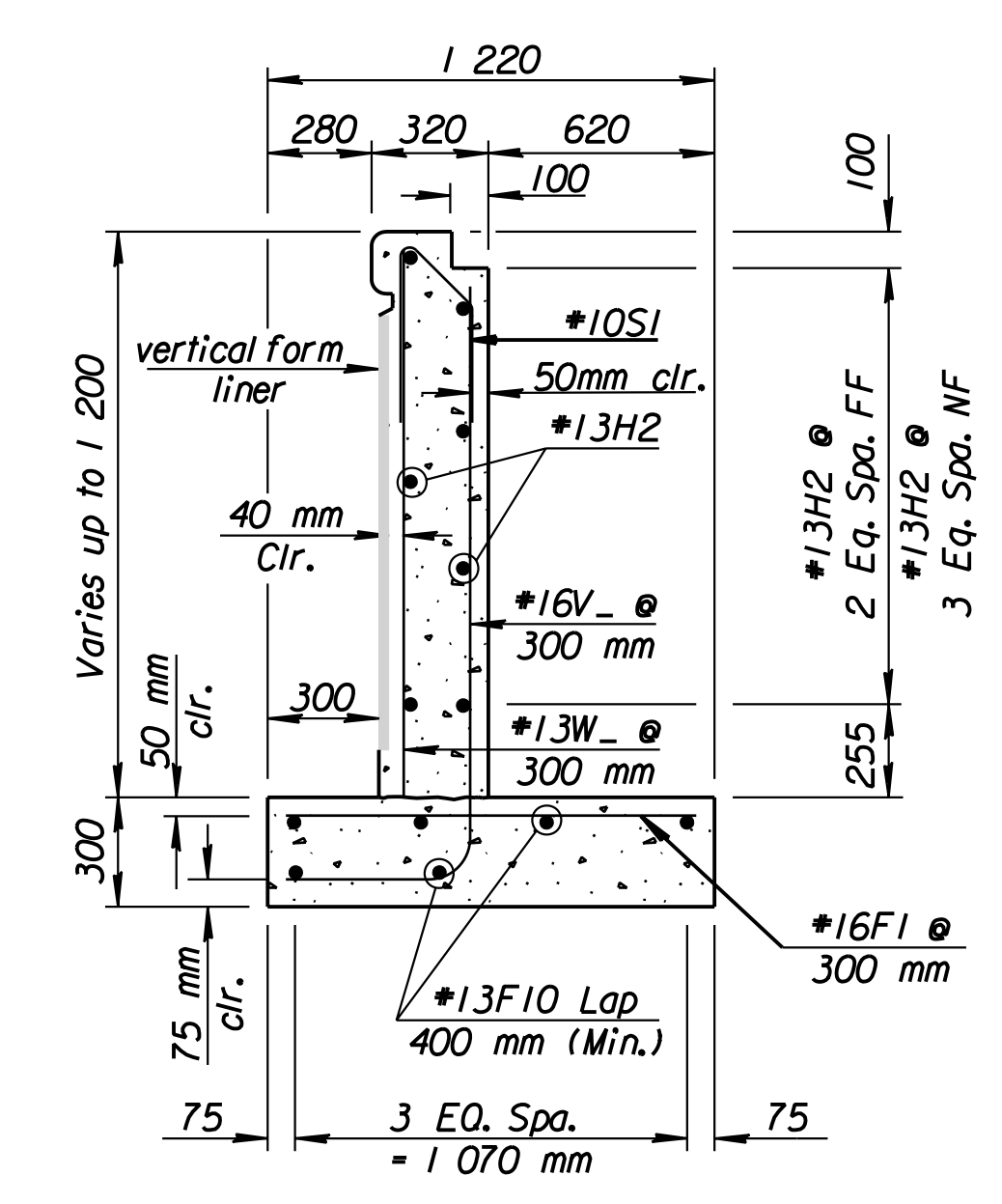
PLAN



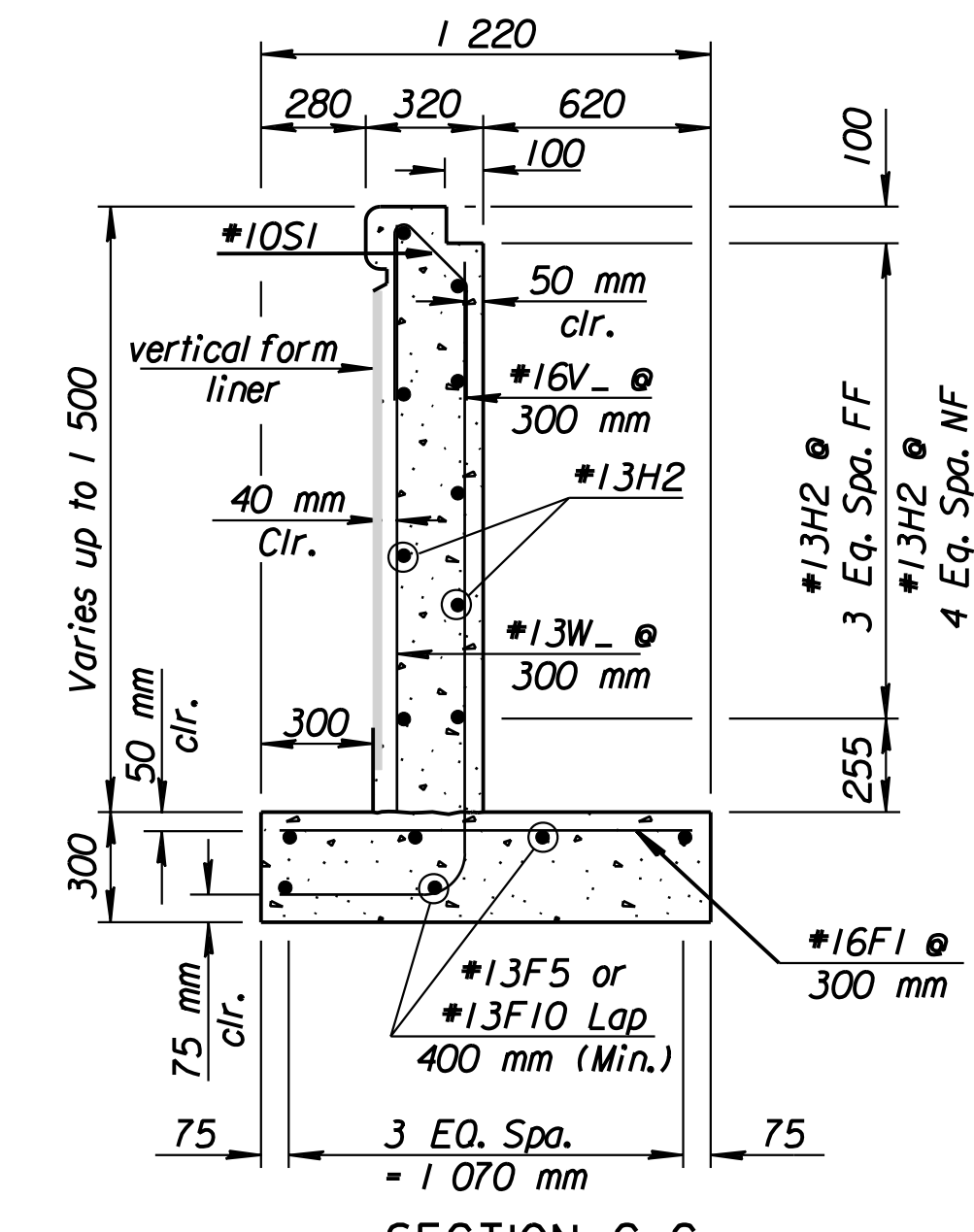
ELEVATION



SECTION A-A
(Use for 6m end Sections ① & ⑲)



SECTION B-B
(Use for Section ⑳)



SECTION C-C
(Use for Sections ② - ③ ⑳ - ㉓)

RECORD DRAWING

1	Revisions	By	Date
No.			
CITY OF WICHITA			
RETAINING WALL #9			
STA. 15+020 TO STA. 15+090			
SEDGWICK COUNTY			
Professional Engineering Consultants, P.A. 303 S. TOPEKA • WICHITA, KANSAS 67202 316-262-2691 • FAX 316-262-3003			
Designed by	SET	Checked by	
Drawn by	DWK	Date	April, 2002
		Job No.	97362

Plotted By: sub 3-25-02
 L:\1997\97362\As-Built\agr\366-wall_9.dgn Last Rev: 8-24-07 By: gdr