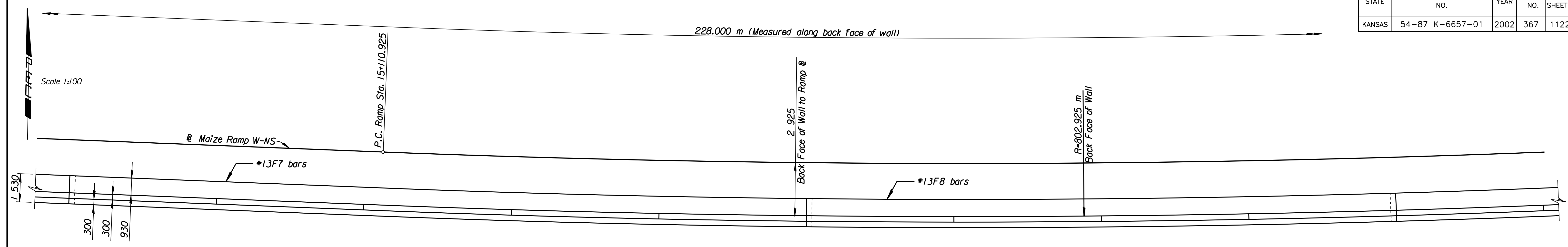
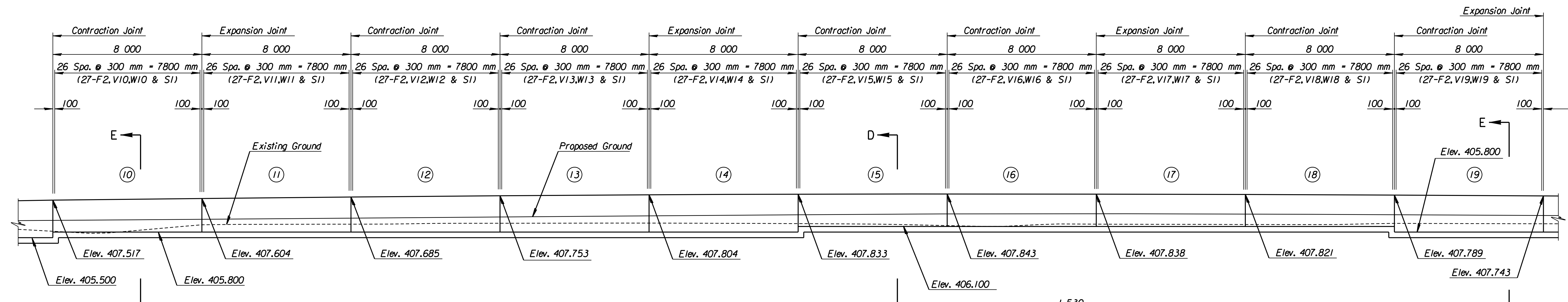


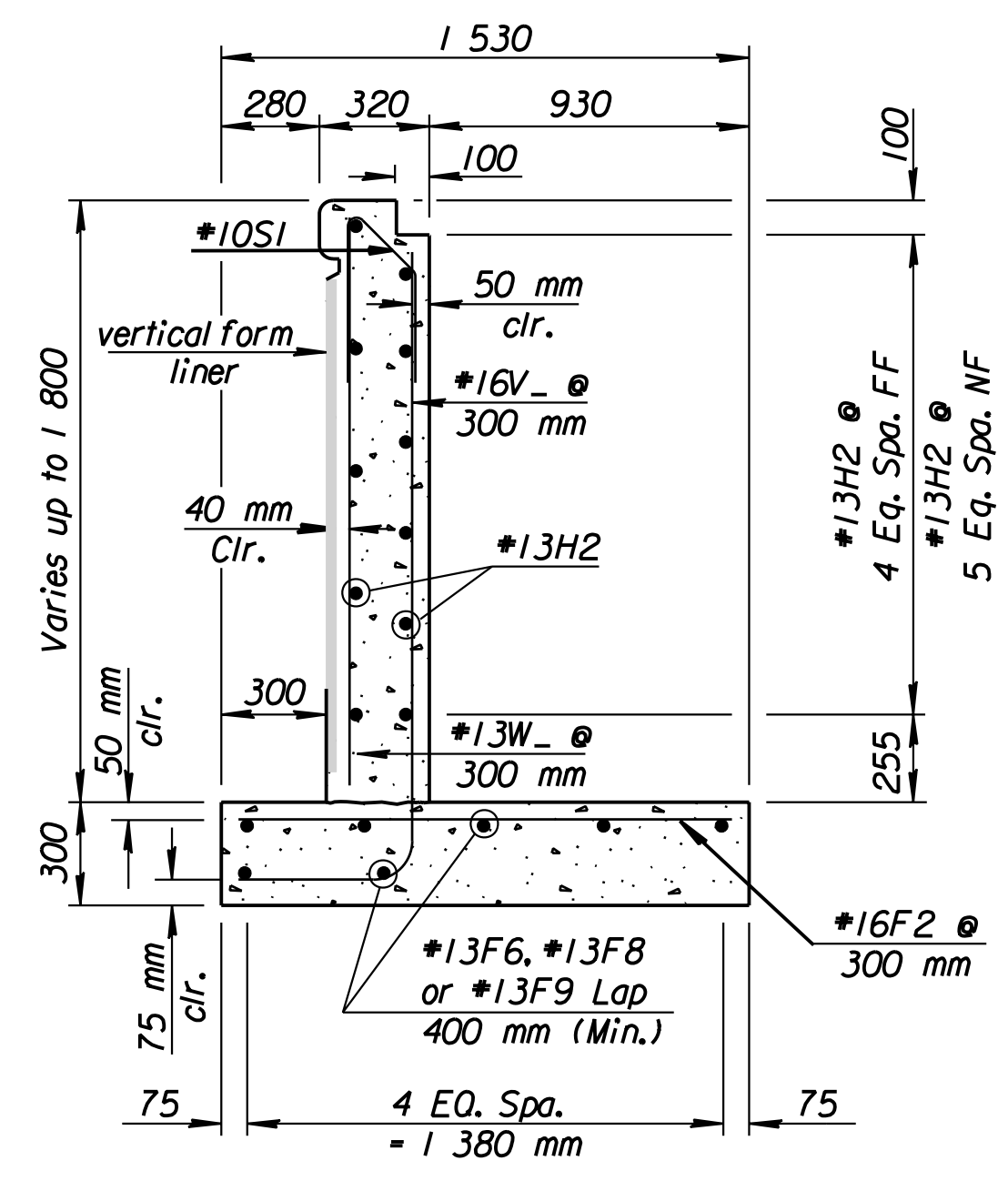
STATE	PROJECT NO.	YEAR	SHEET NO.	TOTAL SHEETS
KANSAS	54-87 K-6657-01	2002	367	1122



PLAN



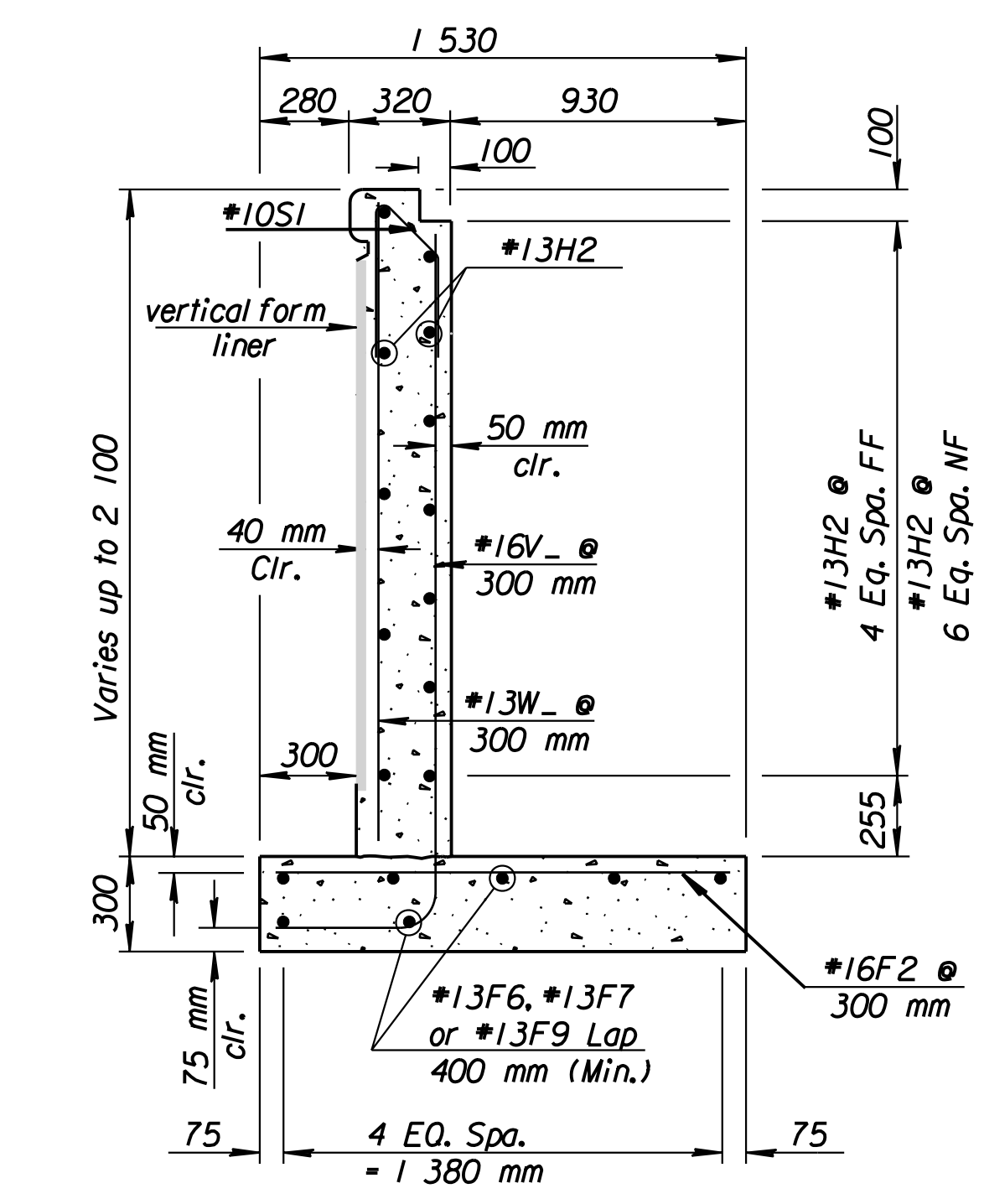
ELEVATION



SECTION D-D

(Use for Sections ④ ⑤ ⑥)

(⑮ - ⑱ ⑳ - ㉓)



SECTION E-E

(Use for Sections ⑦ - ⑭ ⑲ - ㉒)

RECORD DRAWING

1			
No.	Revisions	By	Date
CITY OF WICHITA			
RETAINING WALL #9			
STA. 15+090 TO STA. 15+170			
SEDGWICK COUNTY			
Professional Engineering Consultants, P.A. 303 S. TOPEKA • WICHITA, KANSAS 67202 316-262-2691 • FAX 316-262-3003			
Designed by	SET	Checked by	RAS
Drawn by	DWK	Date	April, 2002
		Job No.	97362

Plotted By: svb 3-25-02
 L:\1997\97362\As-Built\agr\vol 2\Sh 367-wall_9.dgn Last Rev: 8-24-07 By: gdr