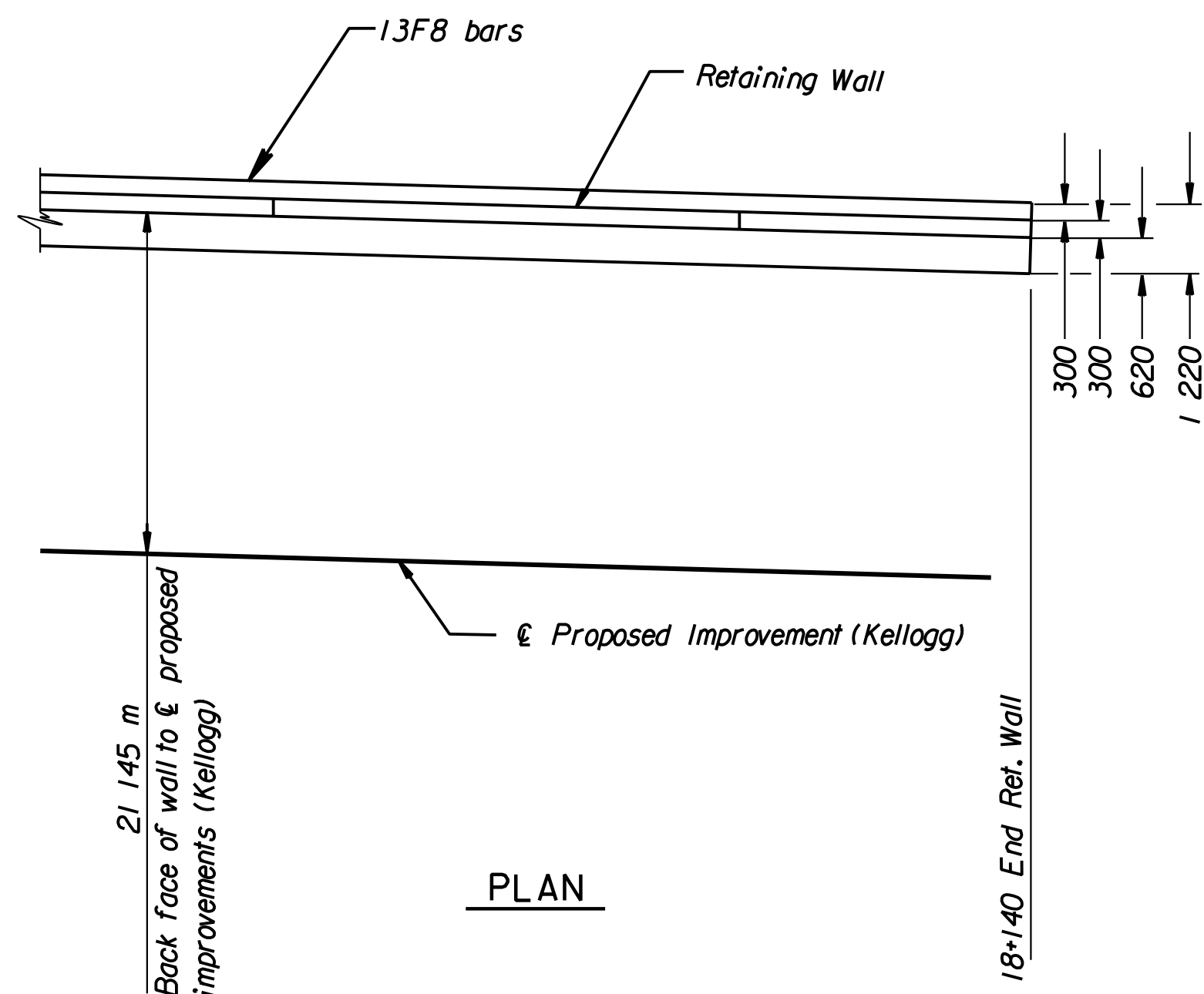
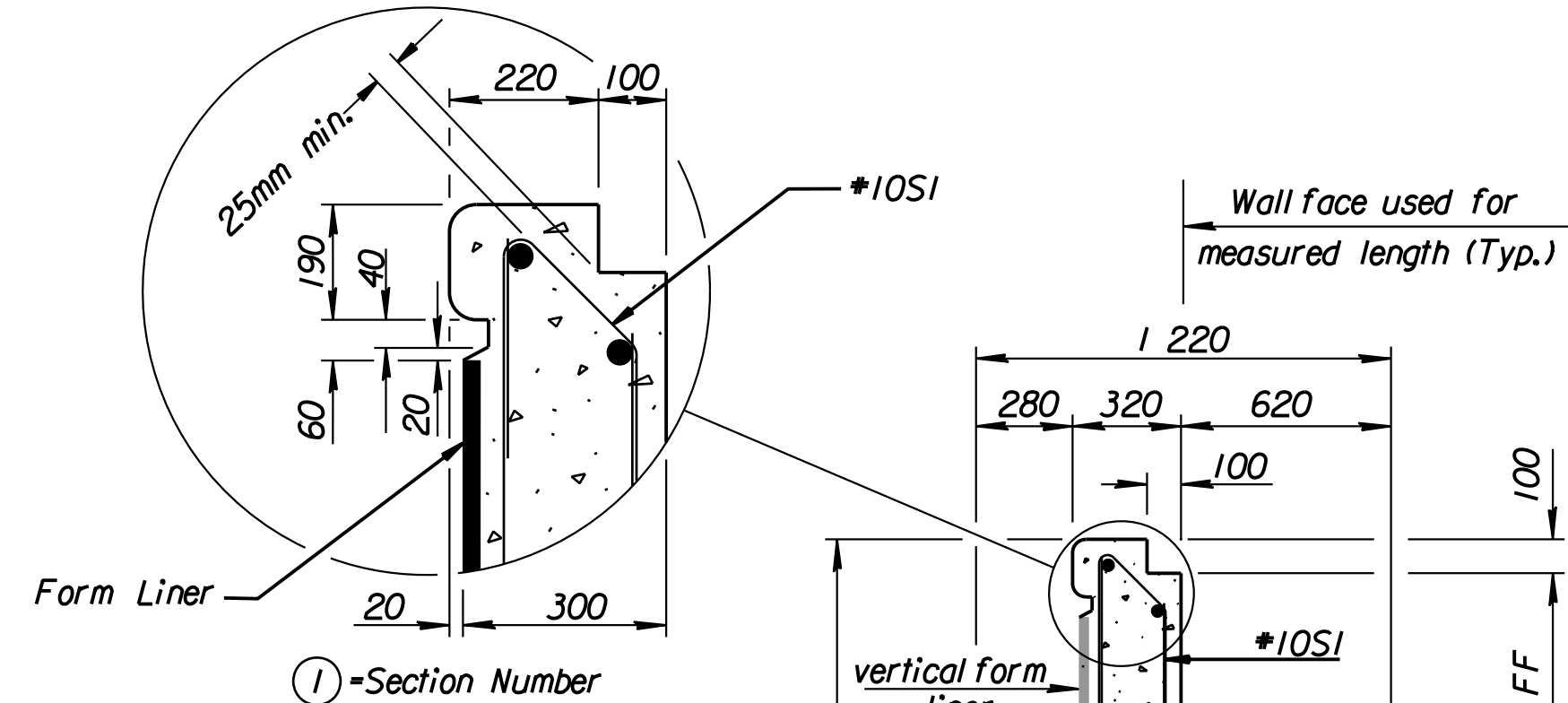


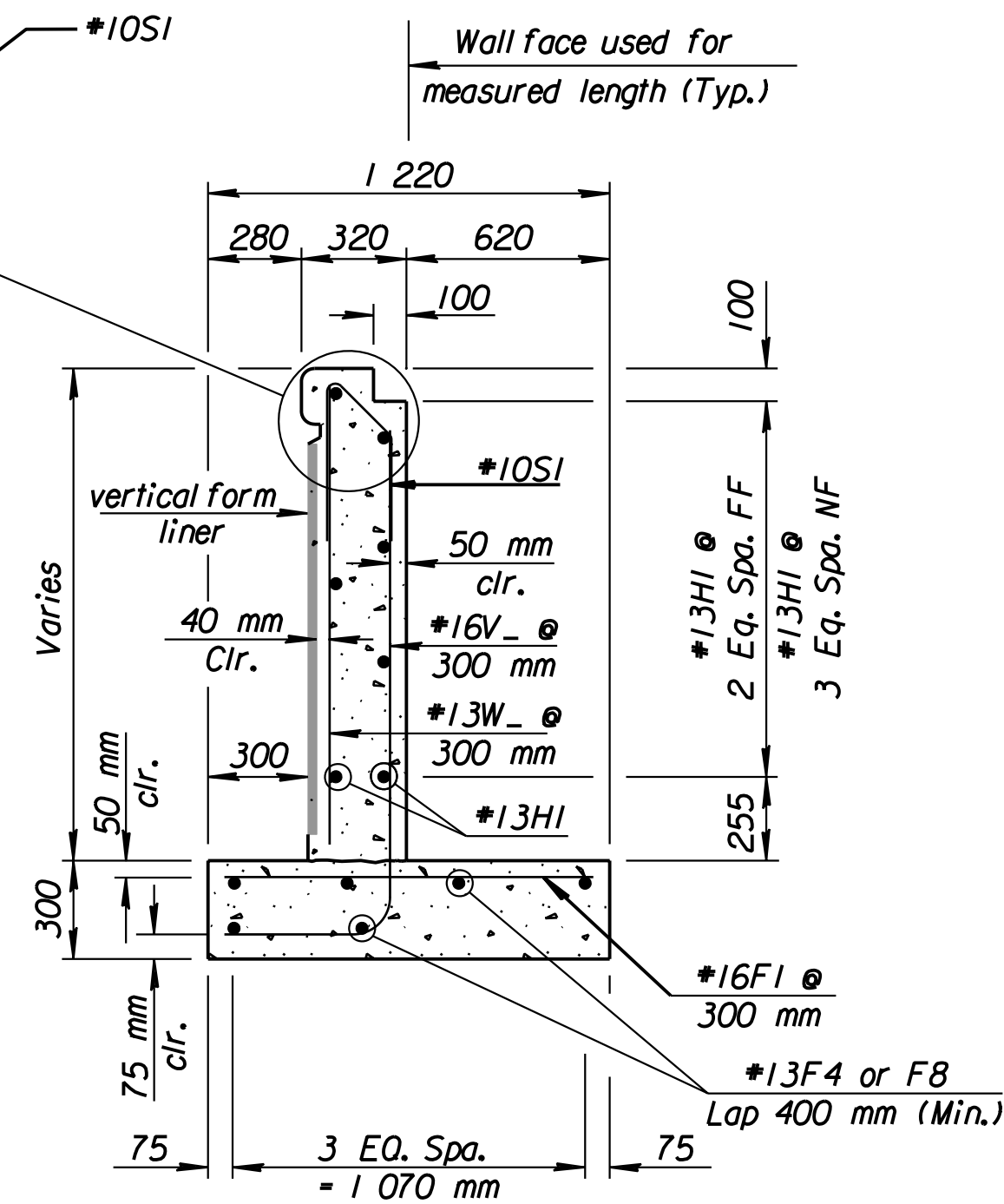
STATE	PROJECT NO.	YEAR	SHEET NO.	TOTAL SHEETS
KANSAS	54-87 K-6657-01	2002	374	1122

DATE	
BY	
REFERENCES NOTED	
REFERENCES CHECKED	

18+140 ξ Proposed Improvement (Kellogg) - End of wall
 N. 512,222.332 E. 493,986.334

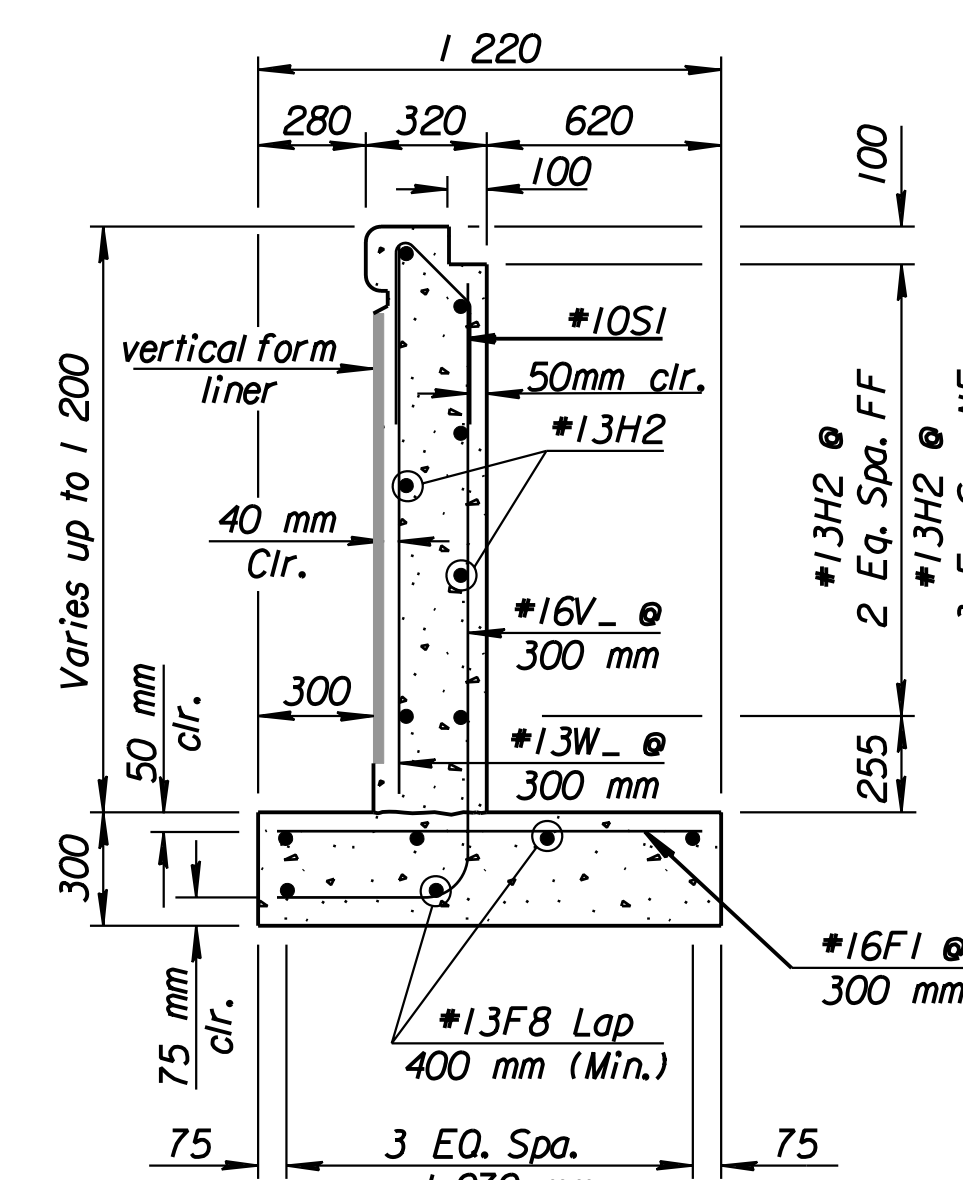


PLAN



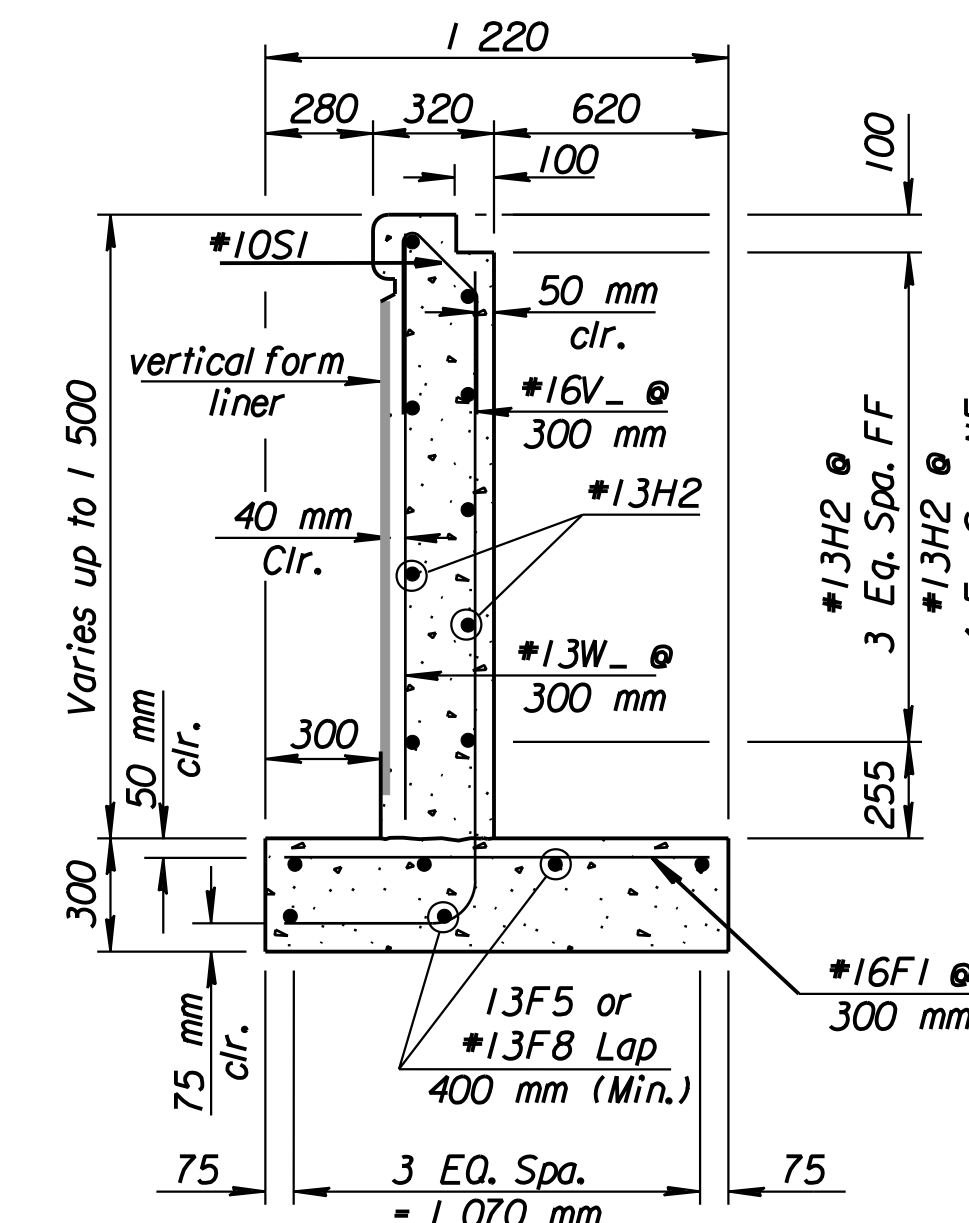
SECTION A-A

(Use for 5 m end Sections 1 - 38)



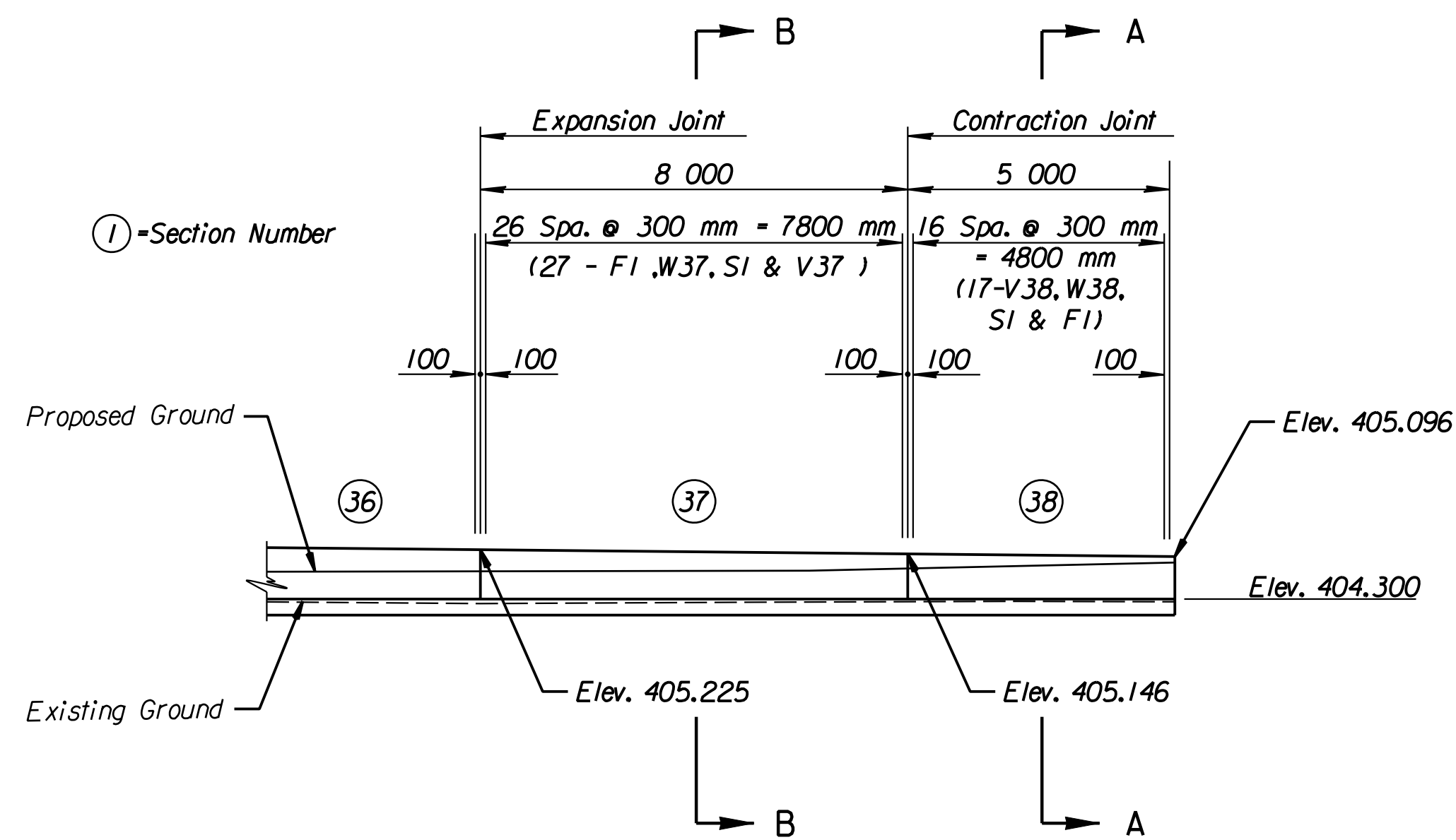
SECTION B-B

(Use for Sections 33 - 37)

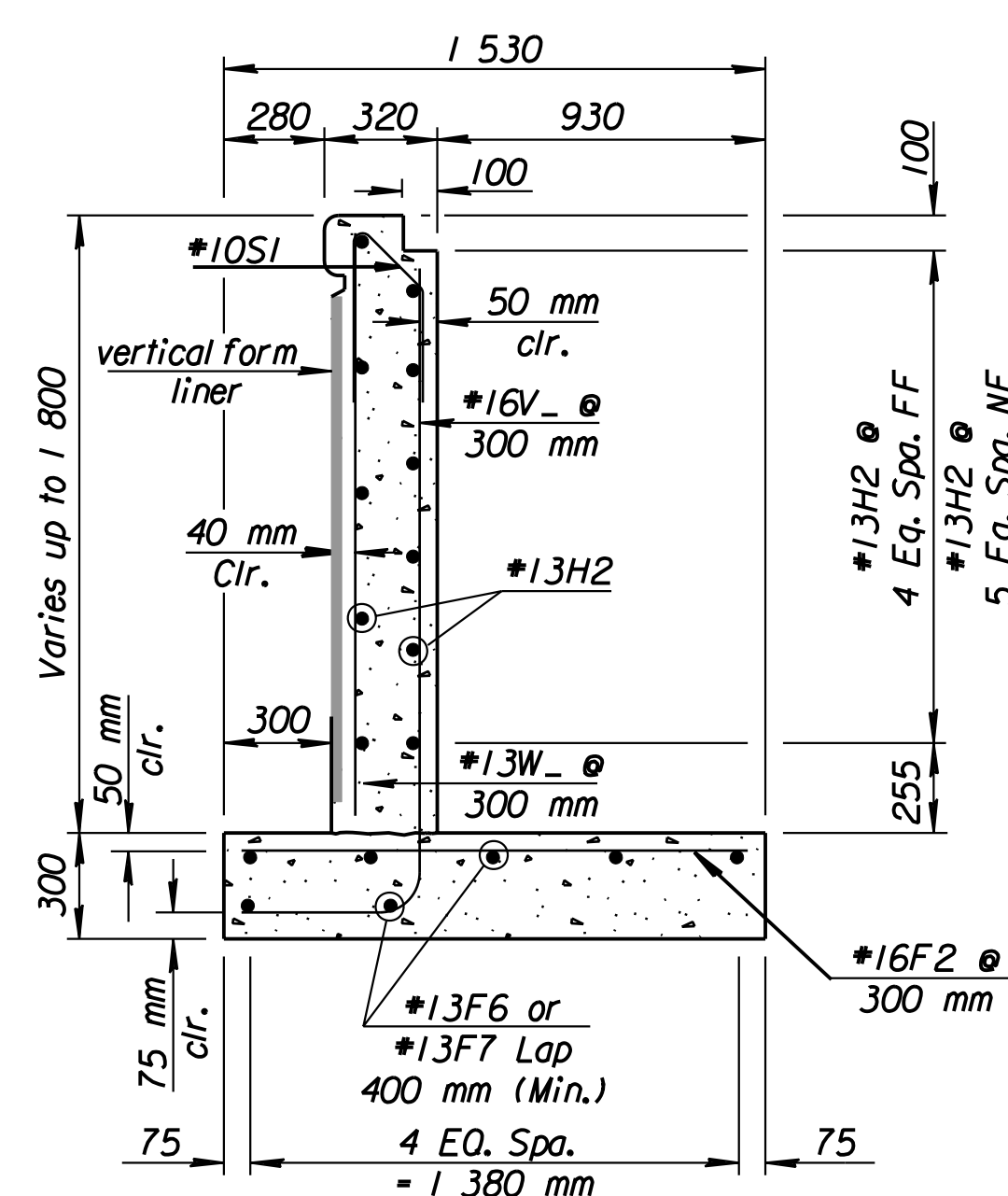


SECTION C-C

(Use for Sections 2, 27 - 32)

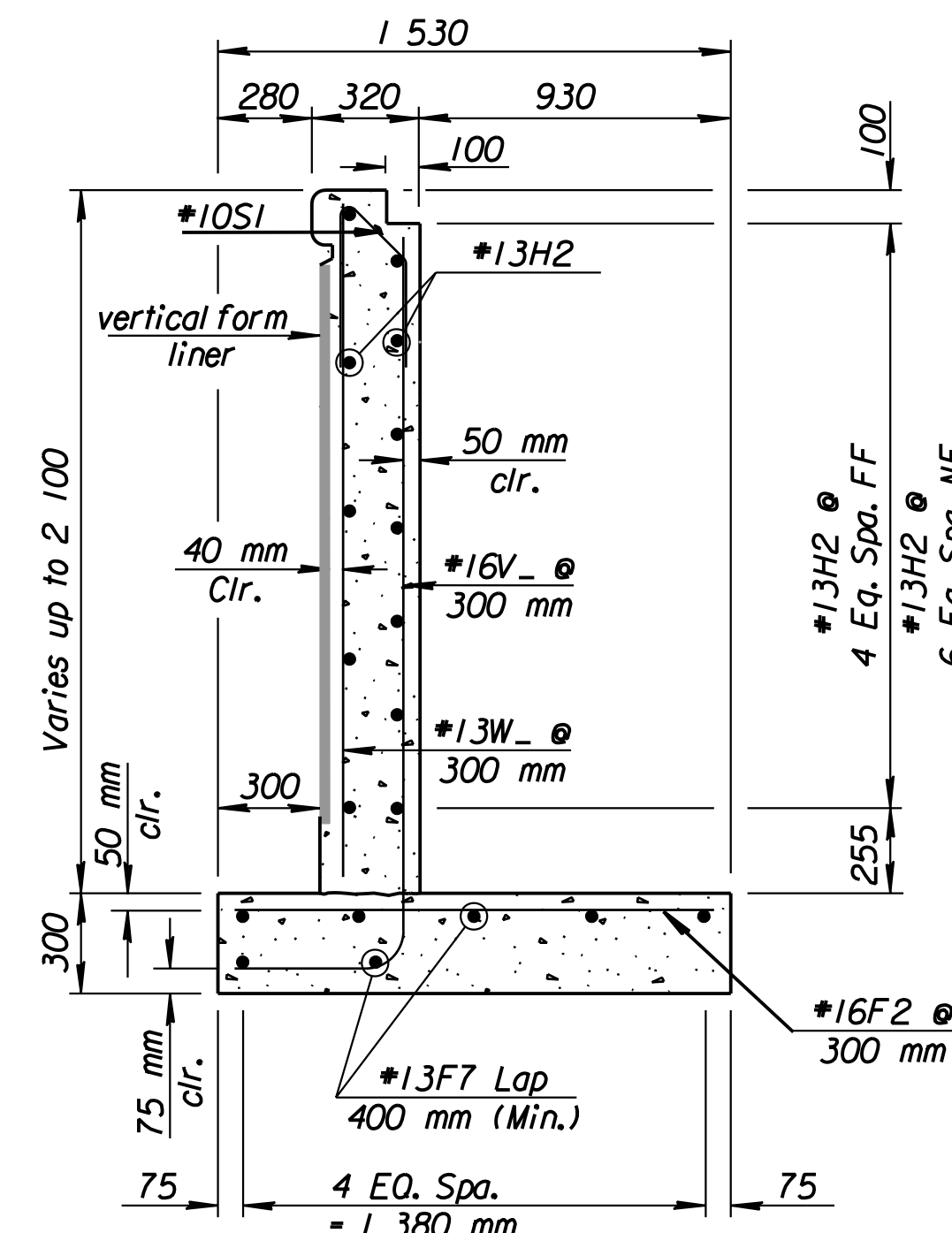


ELEVATION



SECTION D-D

(Use for Sections 3-6, 9-26)



SECTION E-E

(Use for Sections 7-8)

DSWR: SET OPER: JGP SCALE: 1:100
 i:/1997/97362/As-Builts/dgn's/Val 2/Sh 374-wall_10.dgn Last Rev: 8-24-07 By: gar

RECORD DRAWING

No.	Revisions	By	Date

CITY OF WICHITA

RETAINING WALL #10

STA. 18+128 TO STA. 18+140

SEDGWICK COUNTY

Professional Engineering Consultants, P.A.
 303 S. TOPEKA • WICHITA, KANSAS 67202
 316-262-2691 • FAX 316-262-3003

Designed by	SET	Checked by	RAS
Drawn by	DWK	Date	April, 2002
		Job No.	97362