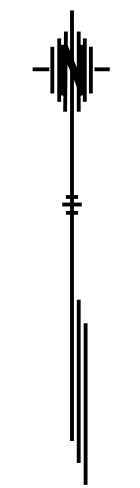


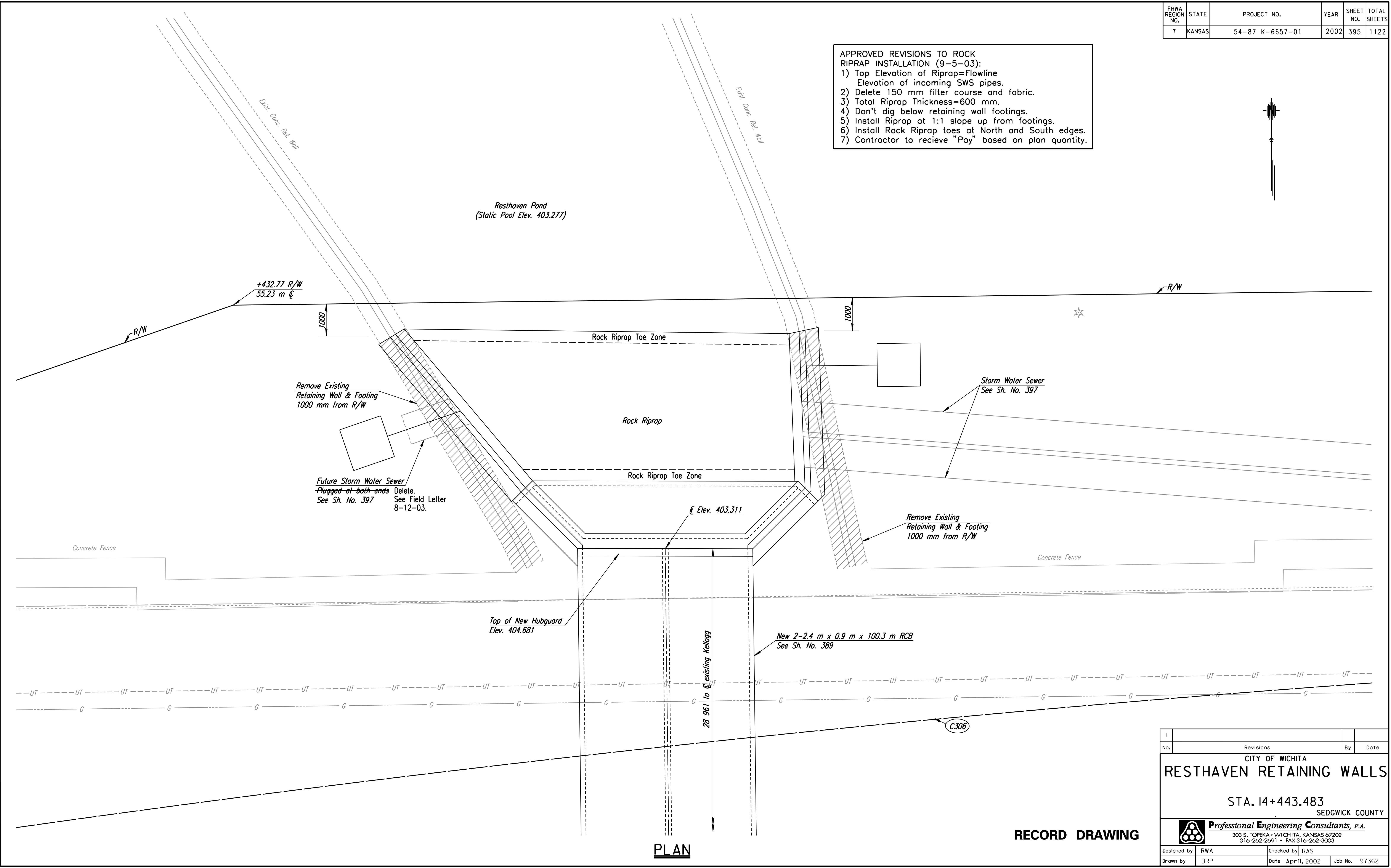
FHWA REGION NO.	STATE	PROJECT NO.	YEAR	SHEET NO.	TOTAL SHEETS
7	KANSAS	54-87 K-6657-01	2002	395	1122

- APPROVED REVISIONS TO ROCK RIPRAP INSTALLATION (9-5-03):
- 1) Top Elevation of Riprap=Flowline Elevation of incoming SWS pipes.
  - 2) Delete 150 mm filter course and fabric.
  - 3) Total Riprap Thickness=600 mm.
  - 4) Don't dig below retaining wall footings.
  - 5) Install Riprap at 1:1 slope up from footings.
  - 6) Install Rock Riprap toes at North and South edges.
  - 7) Contractor to receive "Pay" based on plan quantity.



DATE	BY	REFERENCES NOTED	REFERENCES CHECKED

DSNR: RWA OPER: DRP SCALE: 1:50  
 i:/1997/97362/As-Builts/dgn's/NoL2/Sh\_395--resthplan.dgn Last Rev.: 8-28-07 By: gdr



**PLAN**

**RECORD DRAWING**

1			
No.	Revisions	By	Date
<b>CITY OF WICHITA</b> <b>RESTHAVEN RETAINING WALLS</b> STA. 14+443.483 SEDGWICK COUNTY			
<b>Professional Engineering Consultants, P.A.</b> <small>303 S. TOPEKA • WICHITA, KANSAS 67202          316-262-2691 • FAX 316-262-3003</small>			
Designed by	RWA	Checked by	RAS
Drawn by	DRP	Date	April, 2002
		Job No.	97362