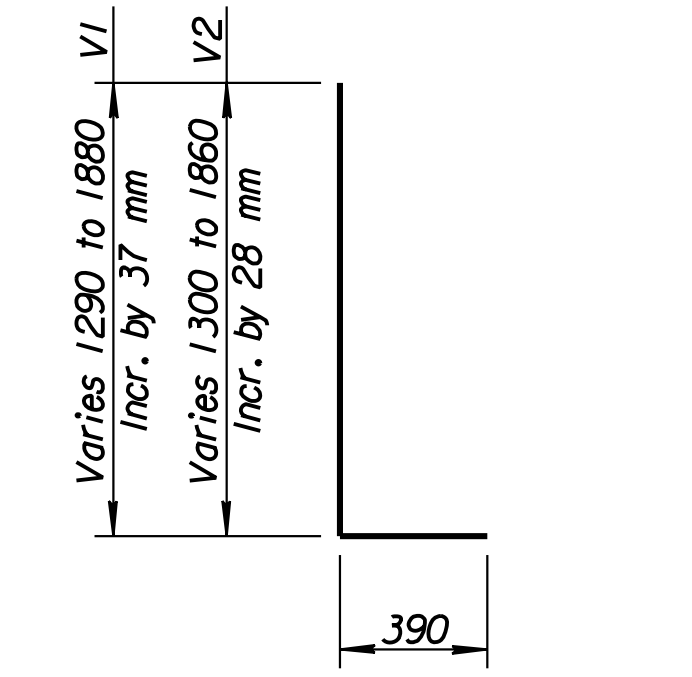


FHWA REGION NO.	STATE	PROJECT NO.	YEAR	SHEET NO.	TOTAL SHEETS
7	KANSAS	54-87 K-6657-01	2002	396	1122

REINFORCING STEEL							
STRAIGHT BARS				BENT BARS			
MARK	NO.	SIZE	LENGTH	MARK	NO.	SIZE	LENGTH
H1	3	12	4700	V1	17	12	Varies
H2	3	12	6050	V2	21	12	Varies
H3	1	12	4730				
H4	1	12	6080				
F1	38	12	800				
F2	4	12	4700				
F3	4	12	6050				
X1	12	12	1000				

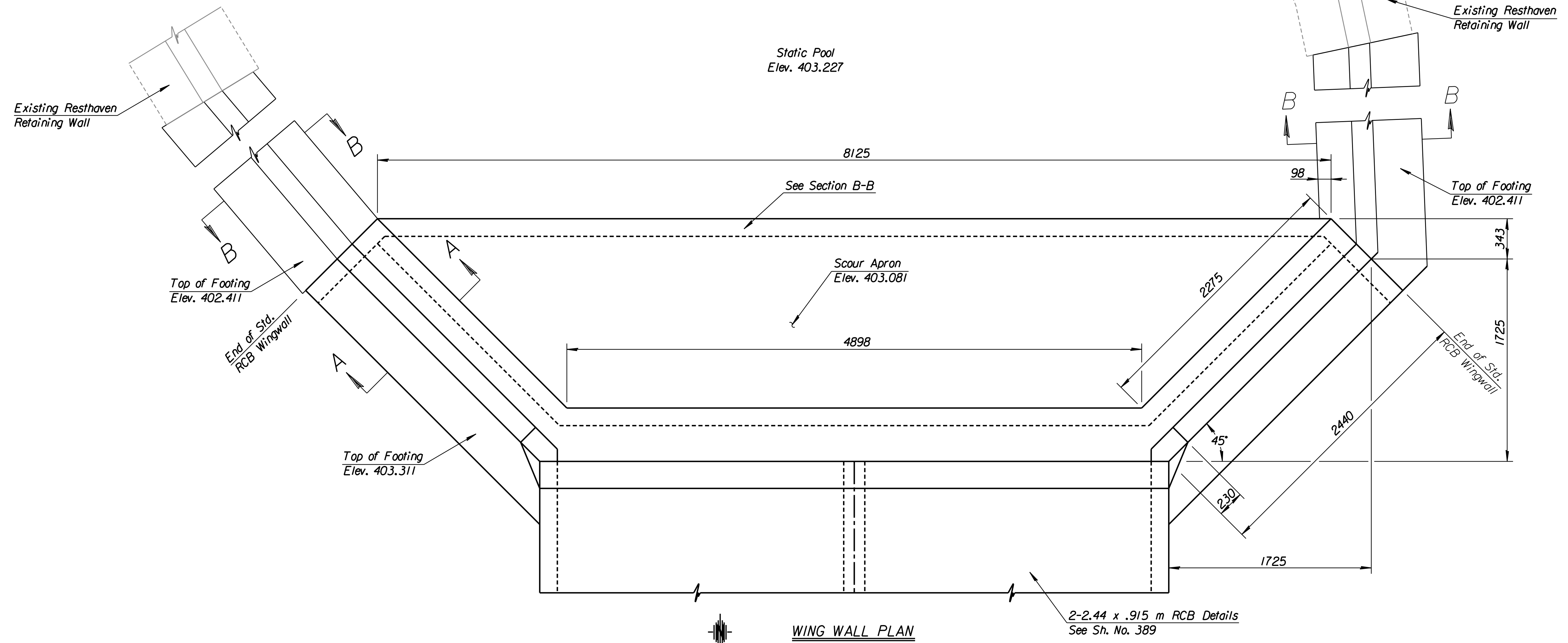
SUMMARY OF QUANTITIES		
Item	Quantity	Unit
AAA Concrete (AE)	5.1	m ³
Reinforcing Steel (Grade 60)	202	kg

See Sheet No. 389 for General Notes.



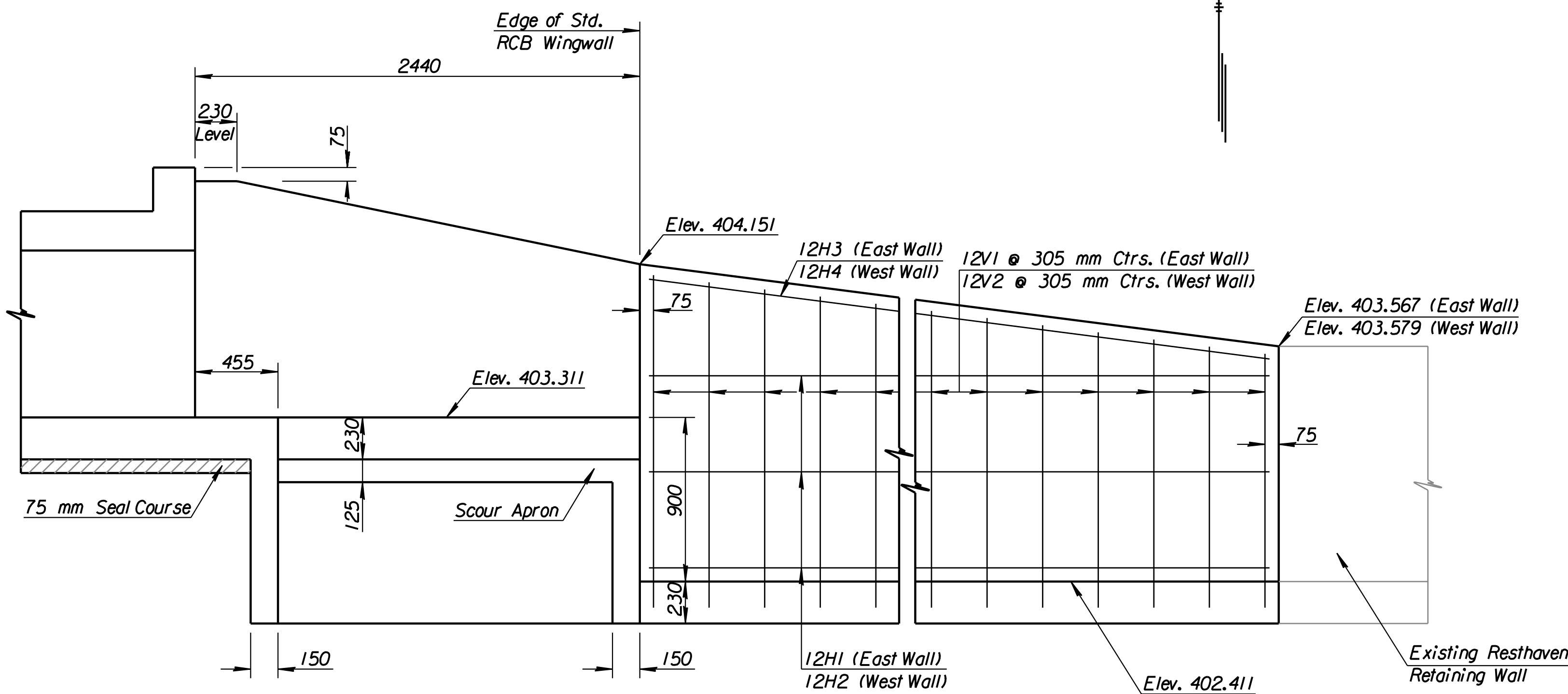
VI, V2
BENDING DIAGRAM
(All Dimensions are out to out of Bars)

DATE	
BY	
REFERENCES NOTED	
REFERENCES CHECKED	

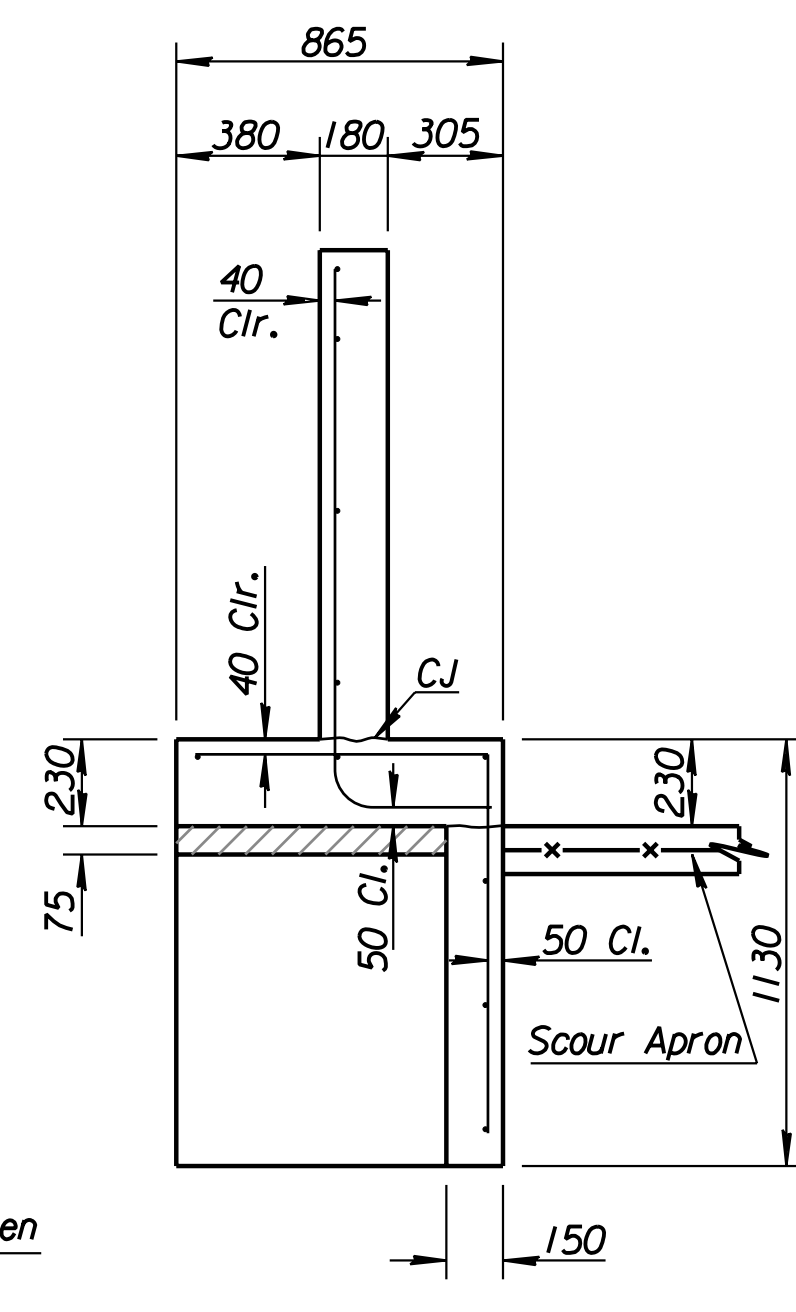


WING WALL PLAN

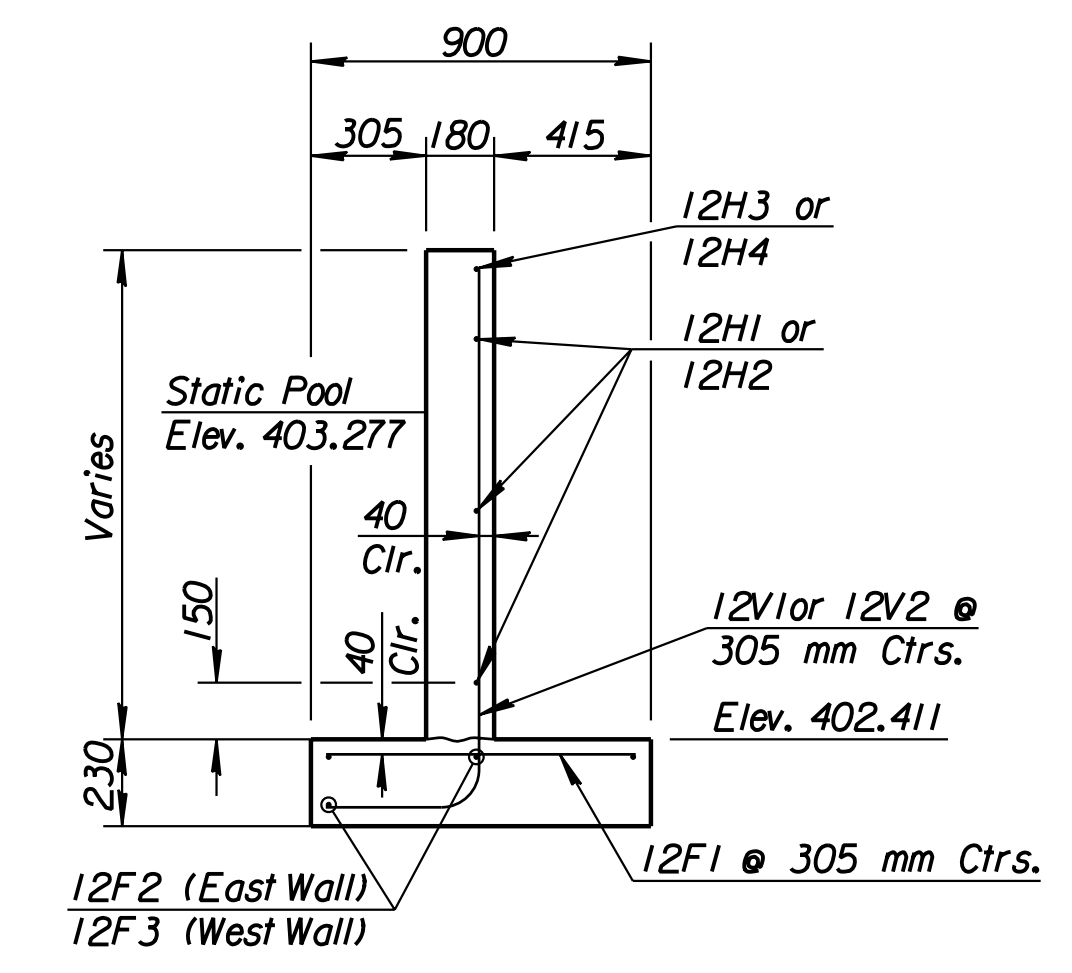
2-2.44 x .915 m RCB Details
See Sh. No. 389



ELEVATION OF WING WALL



SECTION A-A



SECTION B-B

Top of Wall Elev. Varies from 403.567 to 404.151 (East) 403.579 to 404.151 (West)

DSNR: RWA OPER: DRP SCALE: 1:20
 i:/1997/97362/As-Built/dgn's/VoL_2/Sh_396-WingDetail.dgn Last Rev.: 8-28-07 By: gdr

RECORD DRAWING

No.	Revisions	By	Date

KANSAS DEPARTMENT OF TRANSPORTATION
EXTENDED WING WALL DETAILS

PROJECT NO. 54-87 K-6657-01 SEDGWICK COUNTY

Professional Engineering Consultants, P.A.
 303 S. TOPEKA • WICHITA, KANSAS 67202
 316-262-2691 • FAX 316-262-3003

Designed by	RWA	Checked by	RAS
Drawn by	DRP	Date	Apr 11, 2002
		Job No.	97362