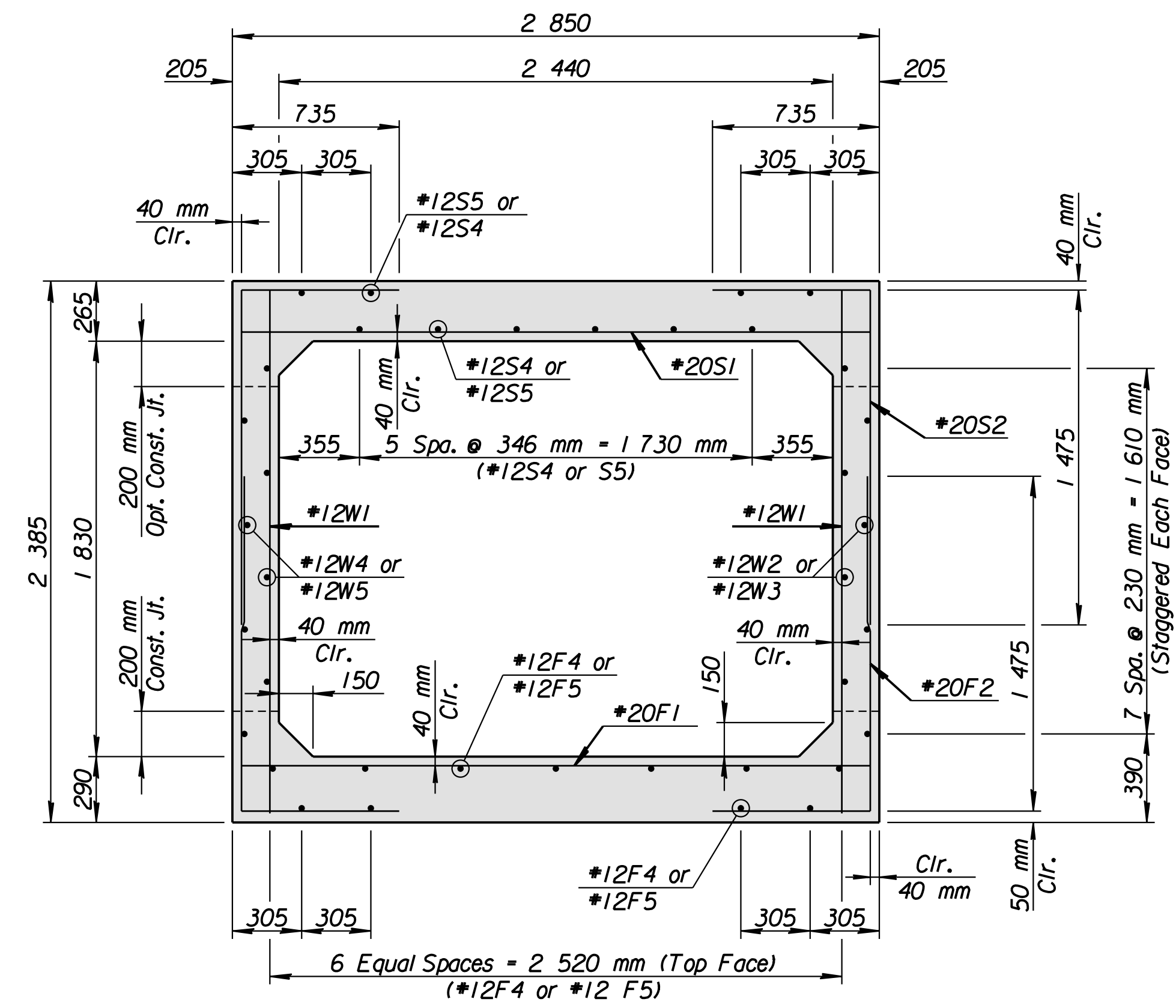
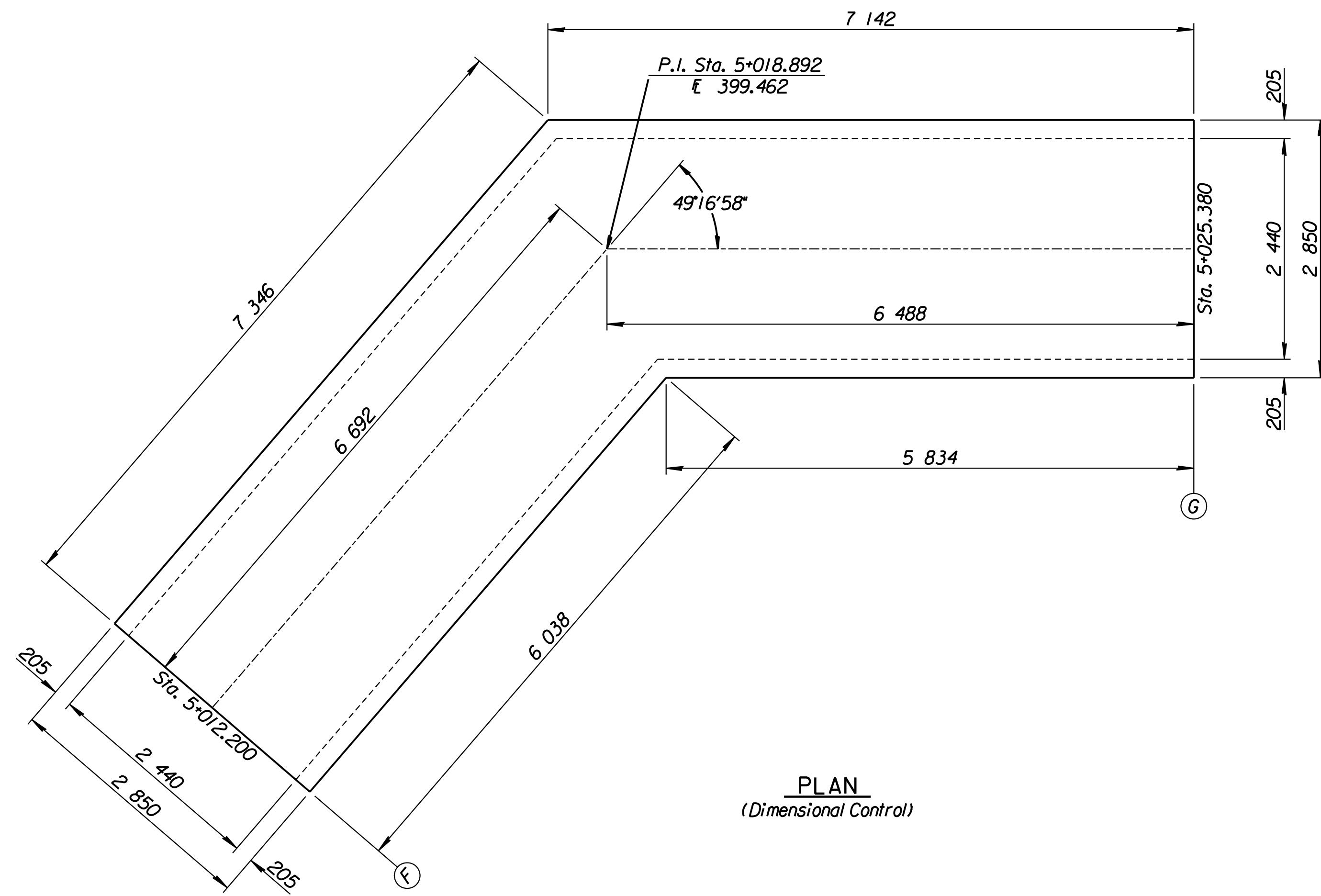
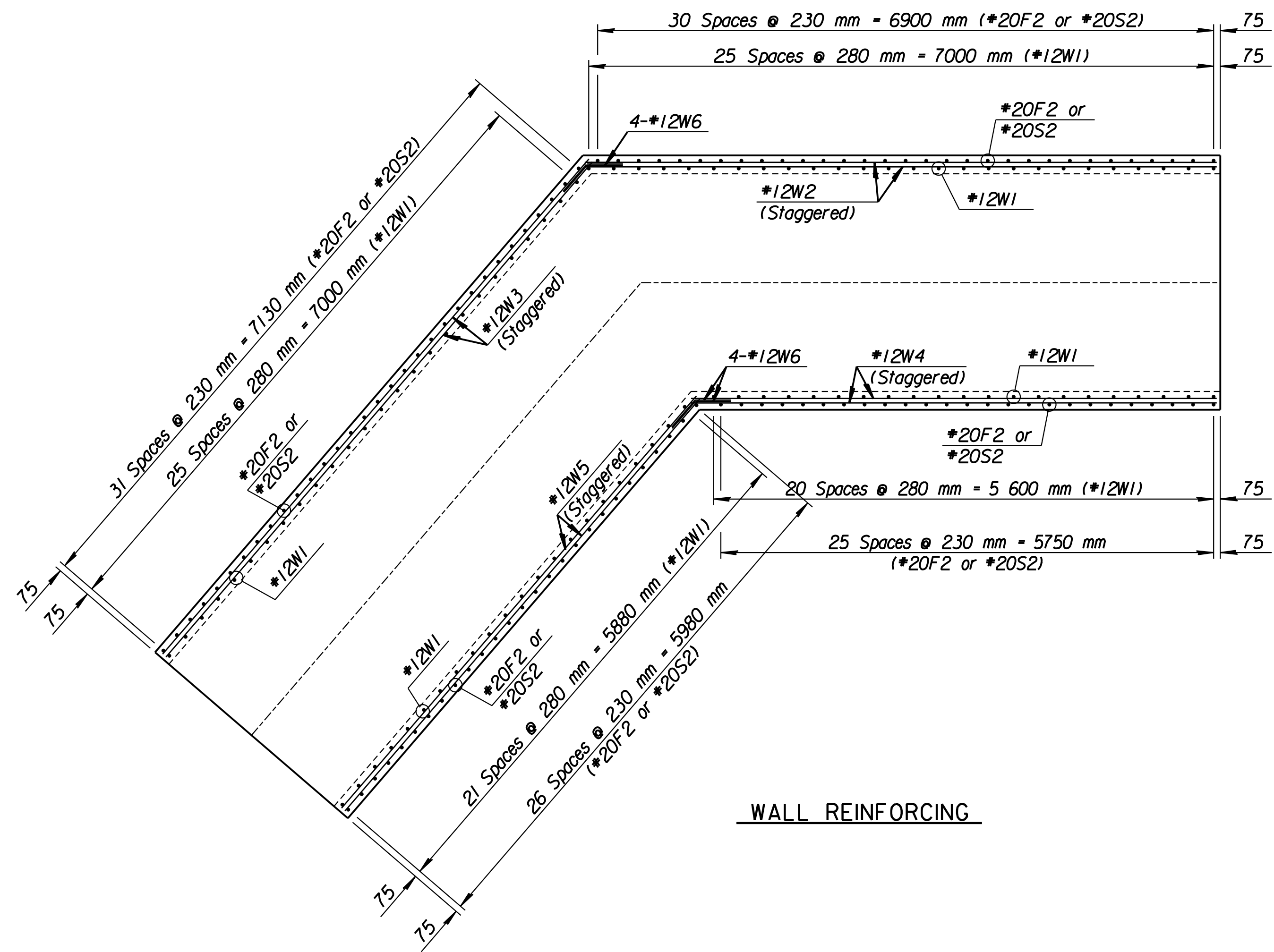


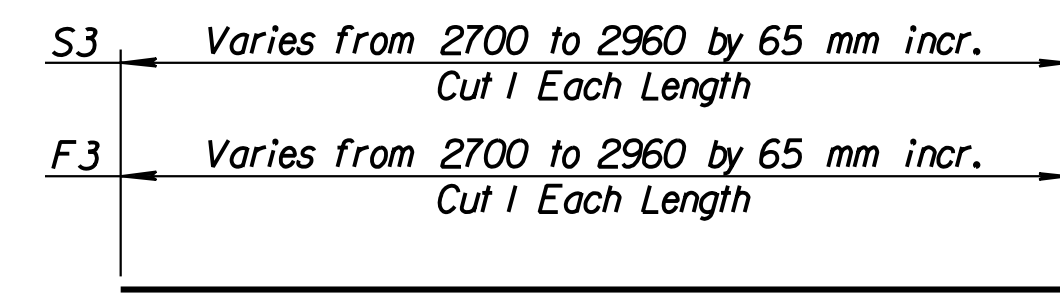
STATE	PROJECT NO.	YEAR	SHEET NO.	TOTAL SHEETS
KANSAS	54-87 K-6657-01	2002	404	1122



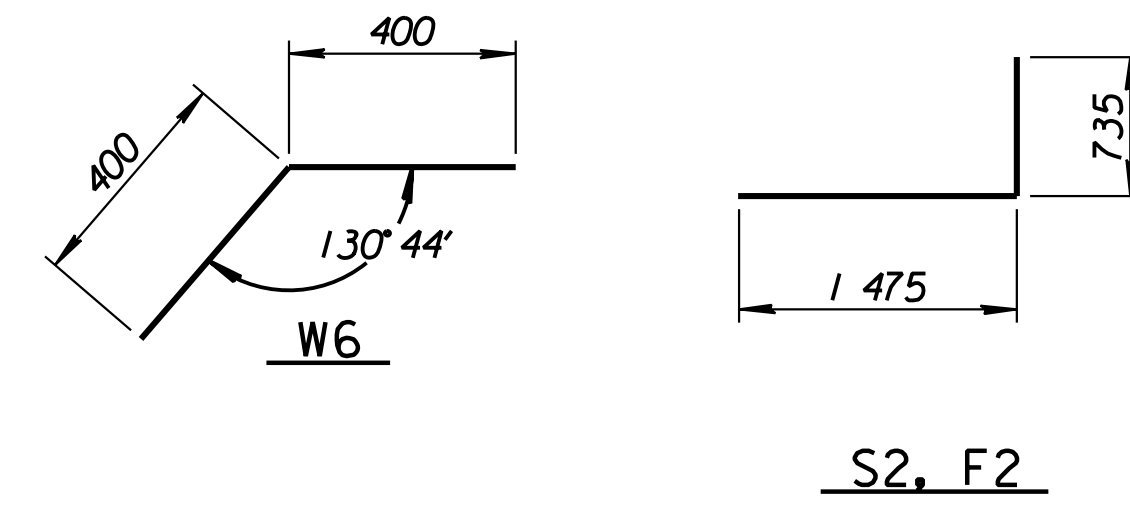
TYPICAL SECTION



WALL REINFORCING



BENDING DIAGRAM  
Dimensions are out to out of bars



S2, F2

REINFORCING STEEL							
Straight Bars			Bent Bars				
Mark	No.	Size	Length	Mark	No.	Size	Length
F1	83	*20	2 750	F2	116	*20	2210
F3	9	*20	Varies				
F4	11	*12	7 220				
F5	11	*12	7 080				
S1	83	*20	2 750	S2	116	*20	2210
S3	9	*20	Varies				
S4	10	*12	7 220				
S5	10	*12	7 080				
W1	95	*12	2 285	W6	16	*12	800
W2	8	*12	7 030				
W3	8	*12	7 250				
W4	8	*12	5 830				
W5	8	*12	6 050				

SUMMARY OF QUANTITIES		
Item	Quantity	Unit
Class AAA Concrete	31.4	m <sup>3</sup>
Reinforcing Steel (Grade 420)	3140	kg

Note:  
See Plan Profile Sheets for location of this R.C.B. Section.  
See Sheet No. 401 for General Note.

1			
No.	Revisions	By	Date
CITY OF WICHITA STA. 17+090.000			
<b>SPECIAL 2.4 x 1.8 x 13.2 m</b>			
<b>R.C.B. SECTION AT P.I.</b>			
KELLOGG (US-54)			
SEDGWICK COUNTY			
<b>Professional Engineering Consultants, P.A.</b>			
303 S. TOPEKA • WICHITA, KANSAS 67202			
316-262-2691 • FAX 316-262-3003			
Designed by	RWA	Checked by	RAS
Drawn by	GDR	Date	April 11, 2002
		Job No.	97362

RECORD DRAWING

Plotted by: ras 2-11-2002  
I:/1997/97362/As-Built/dgn/s/Vol\_2/Sh\_404-24bend.dgn Last Rev.: 8-28-07 By: gdr