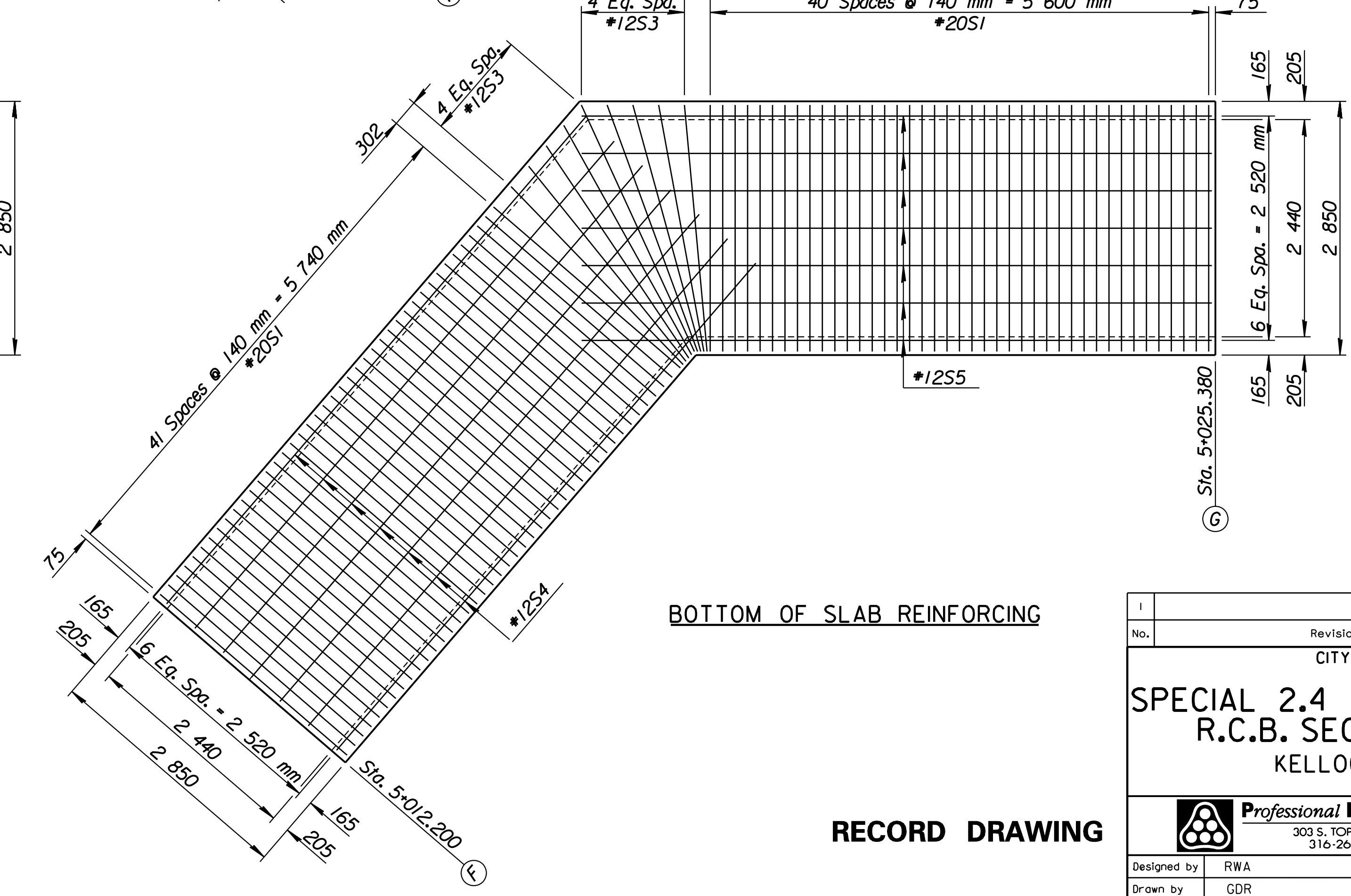
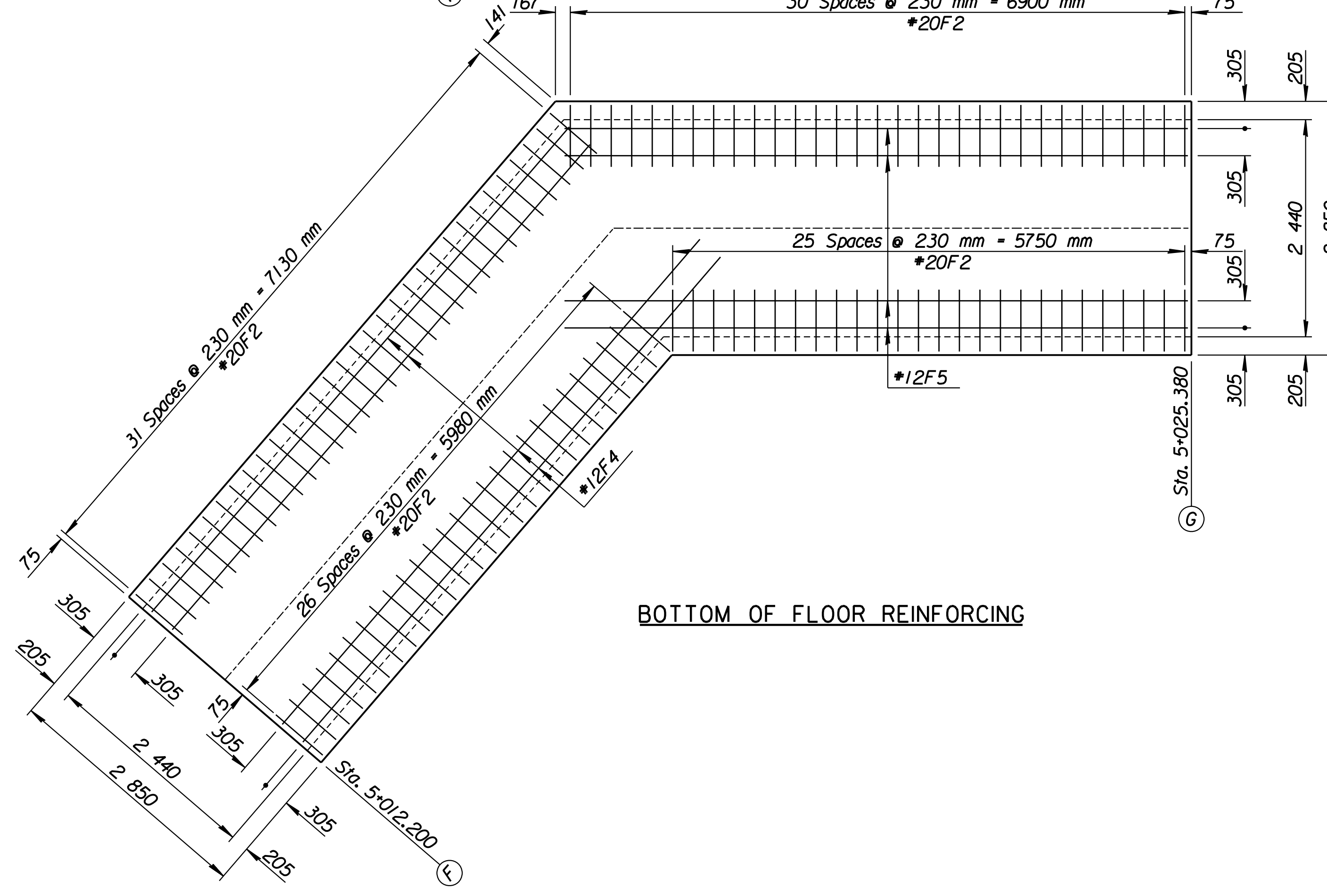
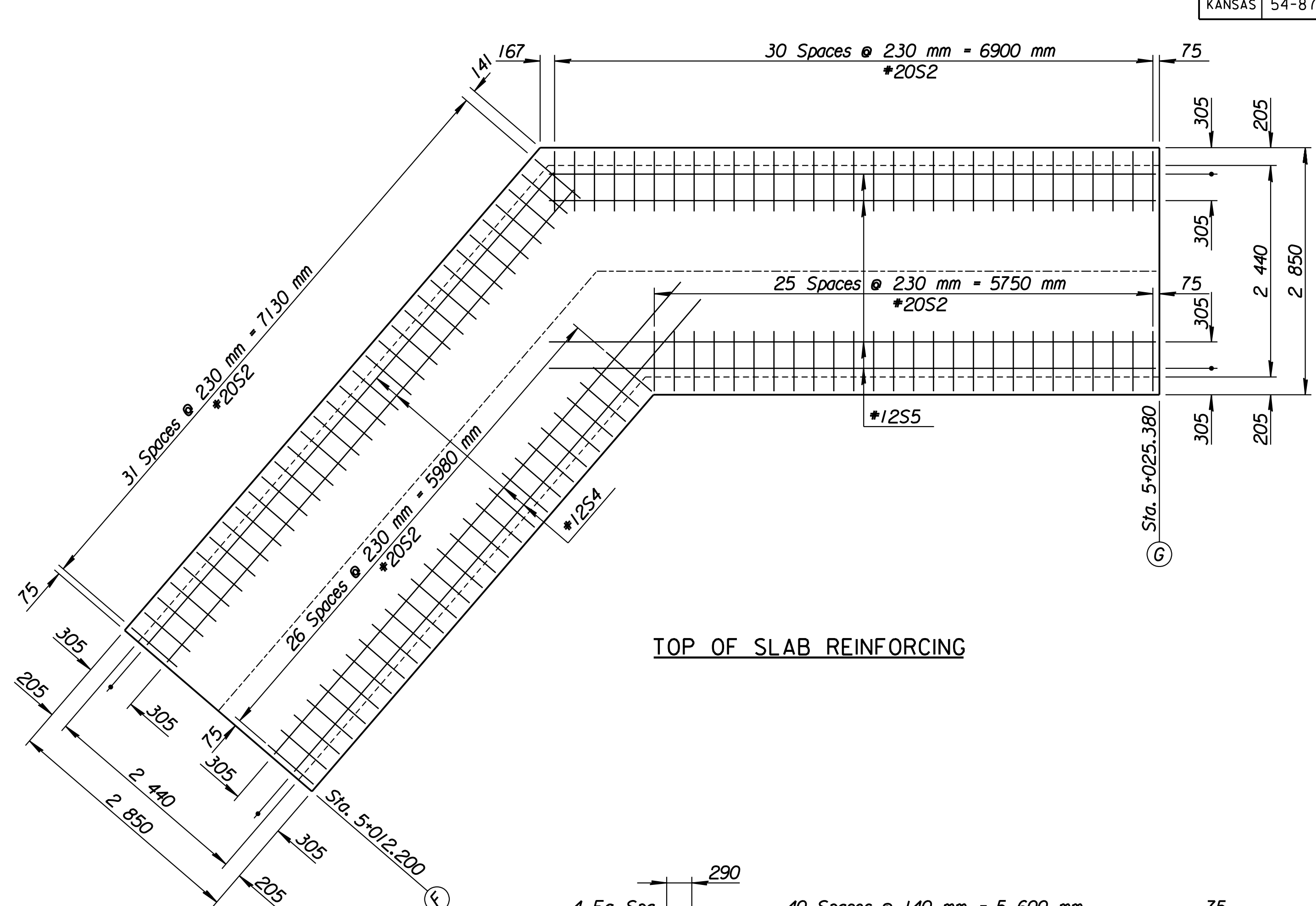
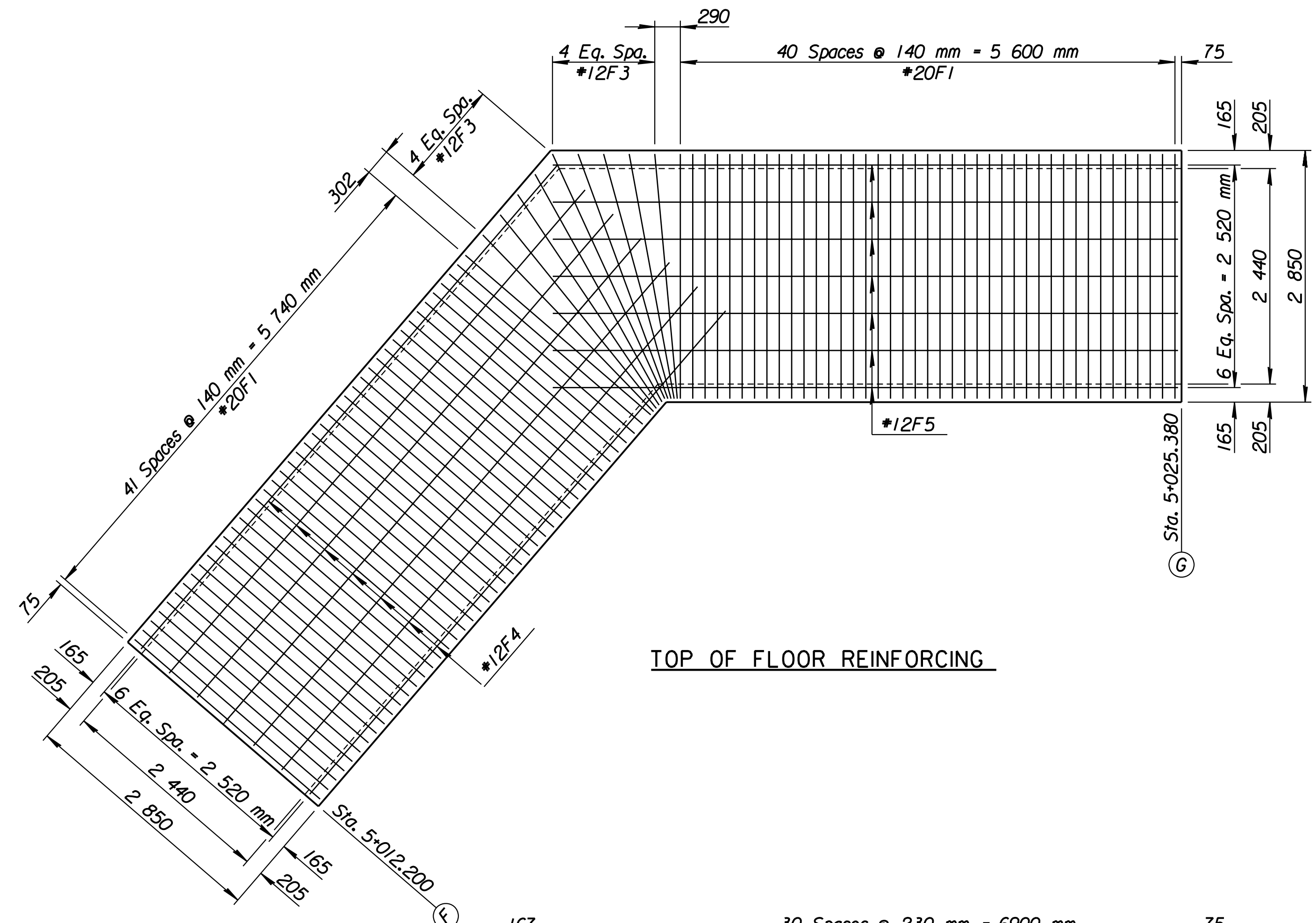


STATE	PROJECT NO.	YEAR	SHEET NO.	TOTAL SHEETS
KANSAS	54-87 K-6657-01	2002	405	1122



Plotted by: ras 2-11-2002
 I:/1997/97362/As-Built/dgn/s/Vol_2/Sh_405-24bend.dgn Last Rev.: 8-28-07 By: gdr

1	Revisions	By	Date
No.			
CITY OF WICHITA Sta. 17+090.000			
SPECIAL 2.4 x 1.8 x 13.2 m			
R.C.B. SECTION AT P.I.			
KELLOGG (US-54)			
SEDGWICK COUNTY			
Professional Engineering Consultants, P.A.			
303 S. TOPEKA • WICHITA, KANSAS 67202			
316-262-2691 • FAX 316-262-3003			
Designed by	RWA	Checked by	RAS
Drawn by	GDR	Date	April 11, 2002
		Job No.	97362

RECORD DRAWING