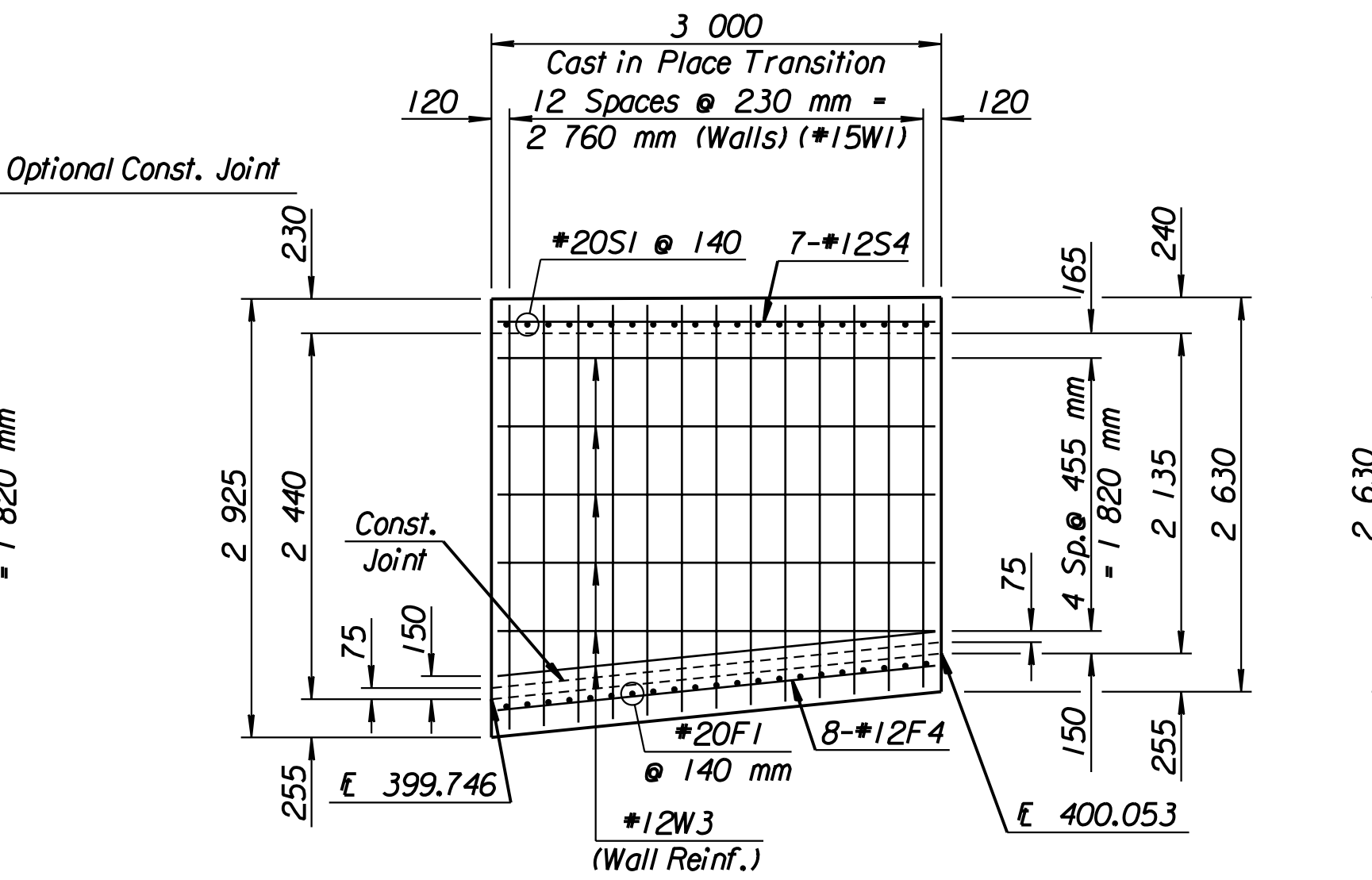
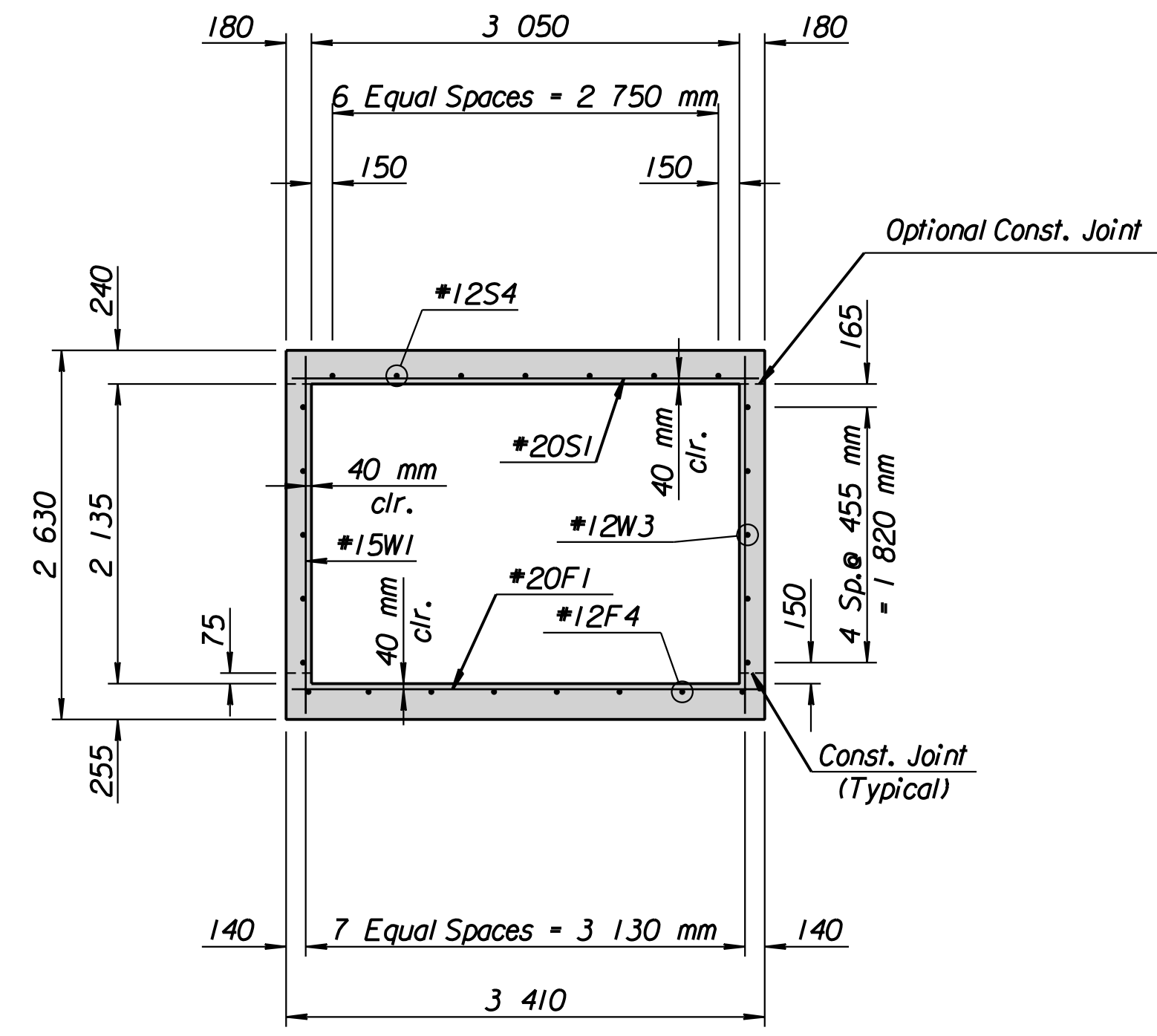


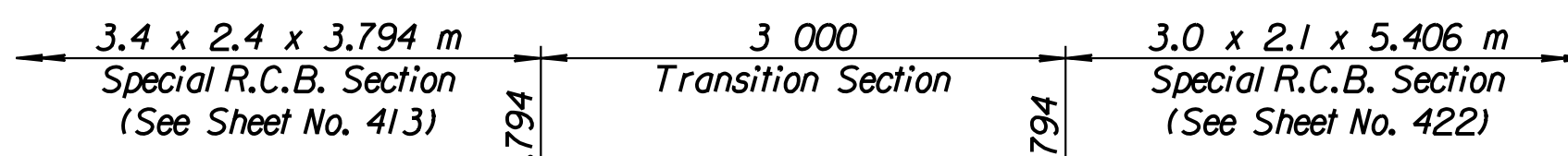
SECTION  
Sta. 0+308.794



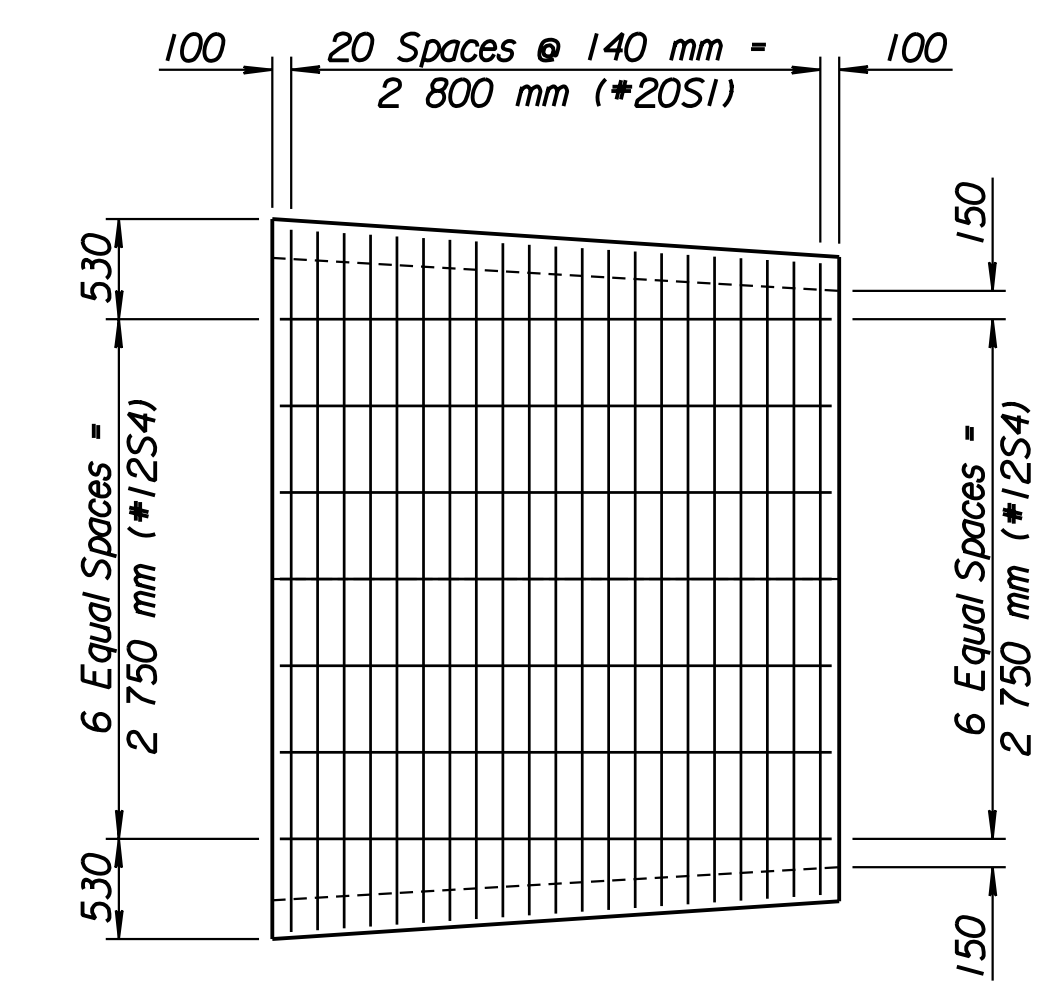
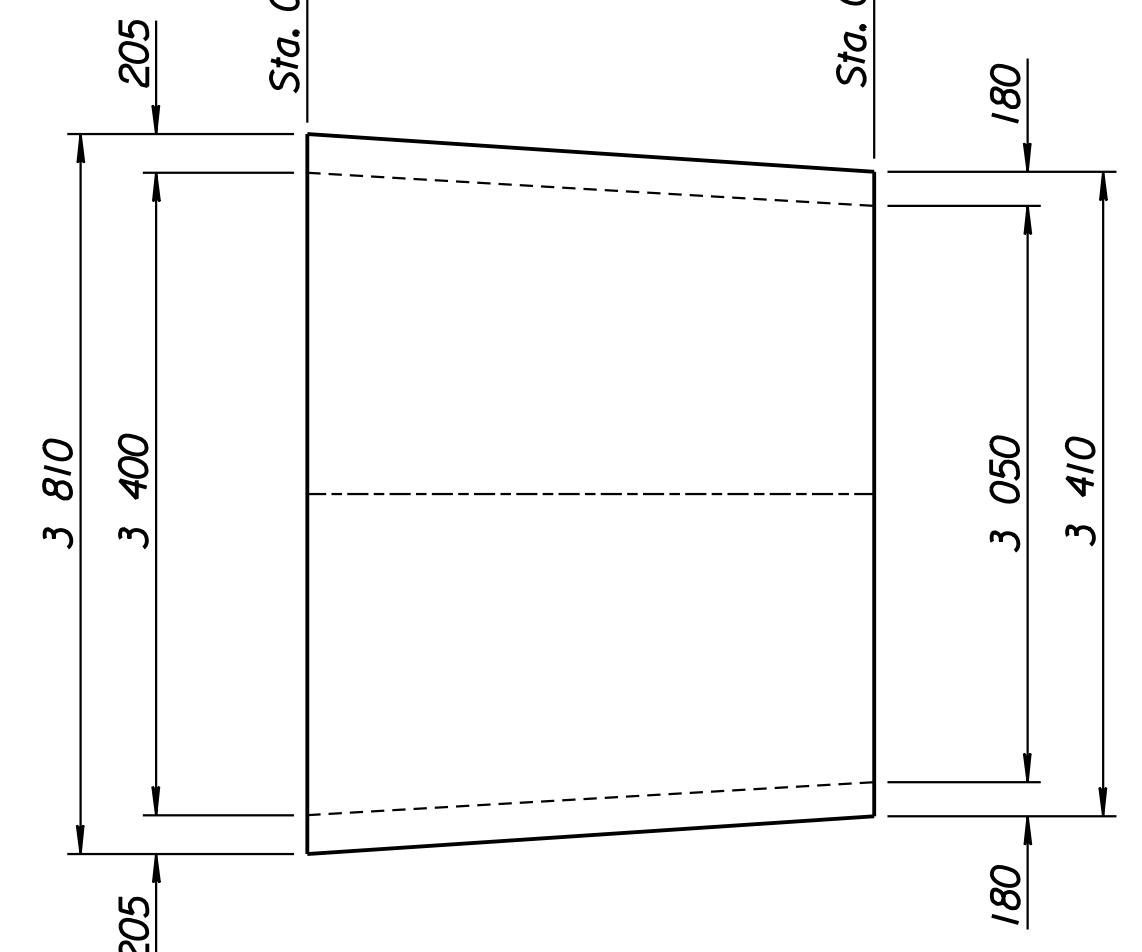
ELEVATION



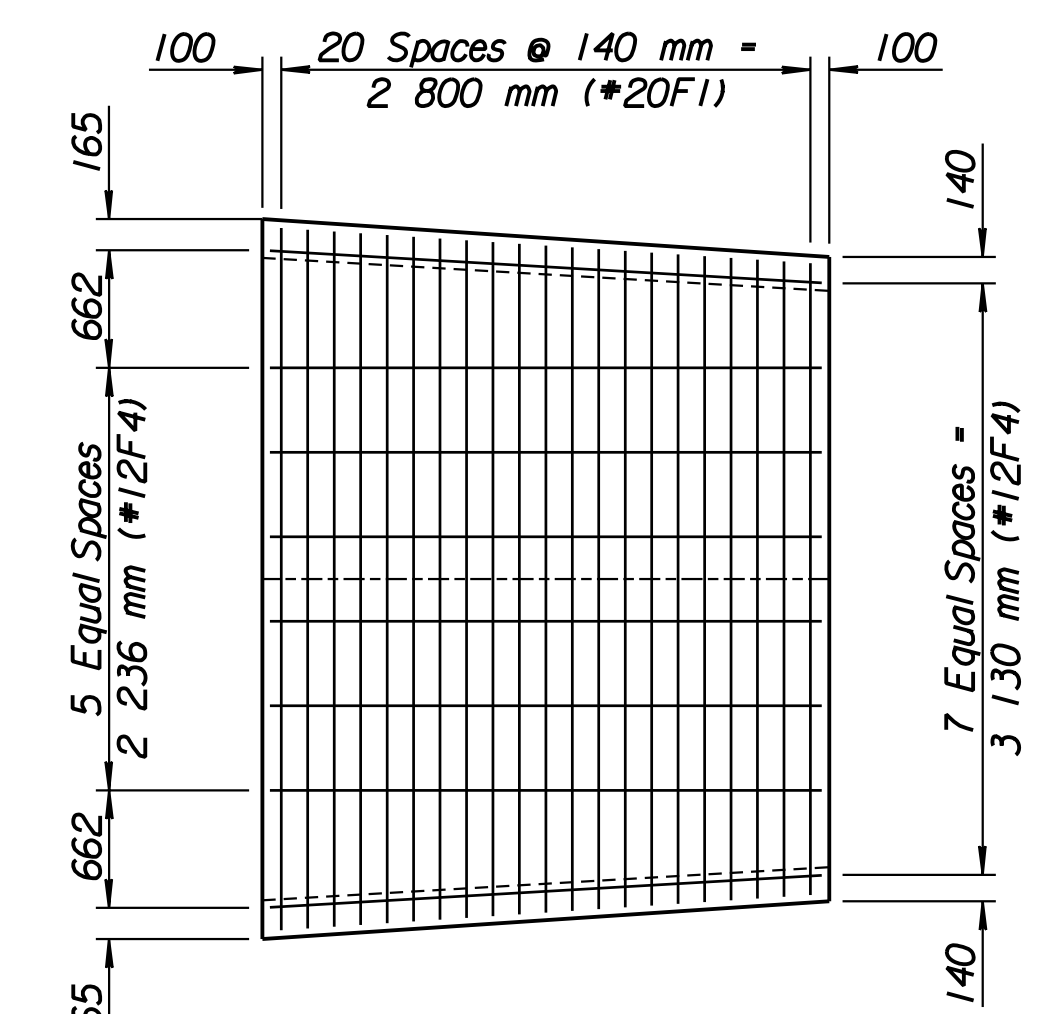
SECTION  
Sta. 0+311.794



PLAN



SLAB REINFORCING



FLOOR REINFORCING

SI	Varies from 3 310 to 3 730 by 21 mm incr. Cut 1 Each Length
FI	Varies from 3 310 to 3 730 by 21 mm incr. Cut 1 Each Length
WI	Varies from 2 520 to 2 820 by 25 mm incr. Cut 2 Each Length

REINFORCING STEEL						
Straight Bars				Bent Bars		
Mark	No.	Size	Length	Mark	No.	Size
SI	21	*20	Varies			
S4	7	*12	2 900			
FI	21	*20	Varies			
F4	8	*12	2 900			
WI	26	*15	Varies			
W3	12	*12	2 900			

SUMMARY OF QUANTITIES		
Item	Quantity	Unit
Class AAA Concrete	8.0	m <sup>3</sup>
Reinforcing Steel (Grade 420)	521	kg

Note:  
See Plan and Profile Sheets for location of this R.C.B. Transition Section.

See Sheet No. 413 for General Notes.

1			
No.	Revisions	By	Date
CITY OF WICHITA			
<b>3.4 x 2.4 m TO 3.0 x 2.1 m</b>			
<b>R.C.B. TRANSITION DETAILS</b>			
KELLOGG (US-54)			
SEDGWICK COUNTY			
Professional Engineering Consultants, P.A.			
303 S. TOPEKA • WICHITA, KANSAS 67202			
316-262-2691 • FAX 316-262-3003			
Designed by	RWA	Checked by	RAS
Drawn by	GDR	Date	April, 2002
		Job No.	97362

RECORD DRAWING