

FHWA REGION NO.	STATE	PROJECT NO.	YEAR	SHEET NO.	TOTAL SHEETS
7	KANSAS	54-87 K-6657-01	2002	434	1122

VOLUME I

VOLUME II

VOLUME III

VOLUME IV

VOLUME V

1	Title Sheet
2	Index of Sheets
3-6	Typical Section - Mainline
7-11	Typical Section - Sideroads
12	Foundation Treatment and Compaction of Earthwork
13-14	Superelevation and Cross-slope Transition Diagrams
15	General Notes
16-63	Plan, Geometric Coordinate, and Profile Sheets (US-54)
64-69	Plan and Profile Sheets (Maize Road)
70-75	Plan and Profile Sheets (Tyler Road)
76-81	Ramp Profiles
82-92	Intersection Details
93-116	Paving Plans
117-126	Concrete Bridge Approach Pavement Details
127-134	Pavement Details
135-146	Inlet and Manhole Details
147	Edge Drain Details (Deleted)
148-150	Headwall Details
151-162	Storm Sewer Plans
163-180	Storm Sewer Profiles
181-195	Storm Sewer Schedules
196-227	Waterline Plans, Profiles, and Details
228-233	Concrete Safety Barrier Details
234-236	QuadGuard Details
196-227	(Not included - previously submitted to Water Dept.)

237	Index of Sheets
238	Cast in Place Retaining Walls General Notes
238A	Planter Wall Details
239	Cast-in-place Retaining Walls Architectural Details
240-250	Retaining Wall and Planter Plans (Cast-In-Place)
251	Planter Wall Handrail Details
252-270	Retaining Wall and Planter Elevations (Cast-In-Place)
271-364	Retaining Wall and Planter Details (Cast-In-Place)
365-368	Retaining Wall #9 Details
369-374	Retaining Wall #10 Details
375-376	MSE Retaining Wall General Notes
377-386	MSE Retaining Wall Plans and Profiles
387	Metal End Section
388	Concrete End Sections
389-397	2-2.4x0.9 RCB Details (Sta 14+443.483)
398-399	1.8x0.9 RFB Details (Sta 15+407.000)
400-410	2.4x1.8 RFB Details (Sta 17+090.000)
411-417	3.4x2.4 RFB Details (Sta .17+121.754 to 17+420)
418	RCB Transition Details (3.4x2.4 to 3.0x2.1)
419-425	3.0x2.1RCB Details (Sta 17+423 to 17+776)
426-427	2.1x1.2 RCB Details (Maize Sta. 4+146)
428-429	2.1x1.2 RCB Details (Tyler Sta. 5+311)
430-433	RCB Standard Details

434	Index of Sheets
435-476	Bridge No. 54-87-19.05 (489) W.B. & Bridge No. 54-87-19.06(491) E.B.
477-498	Bridge No. 54-87-19.32(495) F.W.B.
499-531	Bridge No. 54-87-19.30(493) E.B. & Bridge No. 54-87-19.31(494) W.B.
532-564	Bridge No. 54-87-19.29(492) F.E.B.
565-606	Bridge No. 54-87-20.13(496) W.B. & Bridge No. 54-87-20.12(497) E.B.
607-611	Bridge Standards
612-623	Summary of Quantities
624	Earthwork Balances
625	Recapitulation of Quantities
626-631	Temporary Project Water Pollution Control (Soil Erosion)
632-654	Lighting Plans and Details
655-668	Traffic Signals

669	Index of Sheets
670-792	Signing and Pavement Marking
793-794	Construction Sequence
795-823	Traffic Control
823A	Traffic Control
824-846	Traffic Control
847-894	Landscaping and Irrigation Plans and Details
894A	Wetland Mitigation Plan
895-896	Drainage Maps

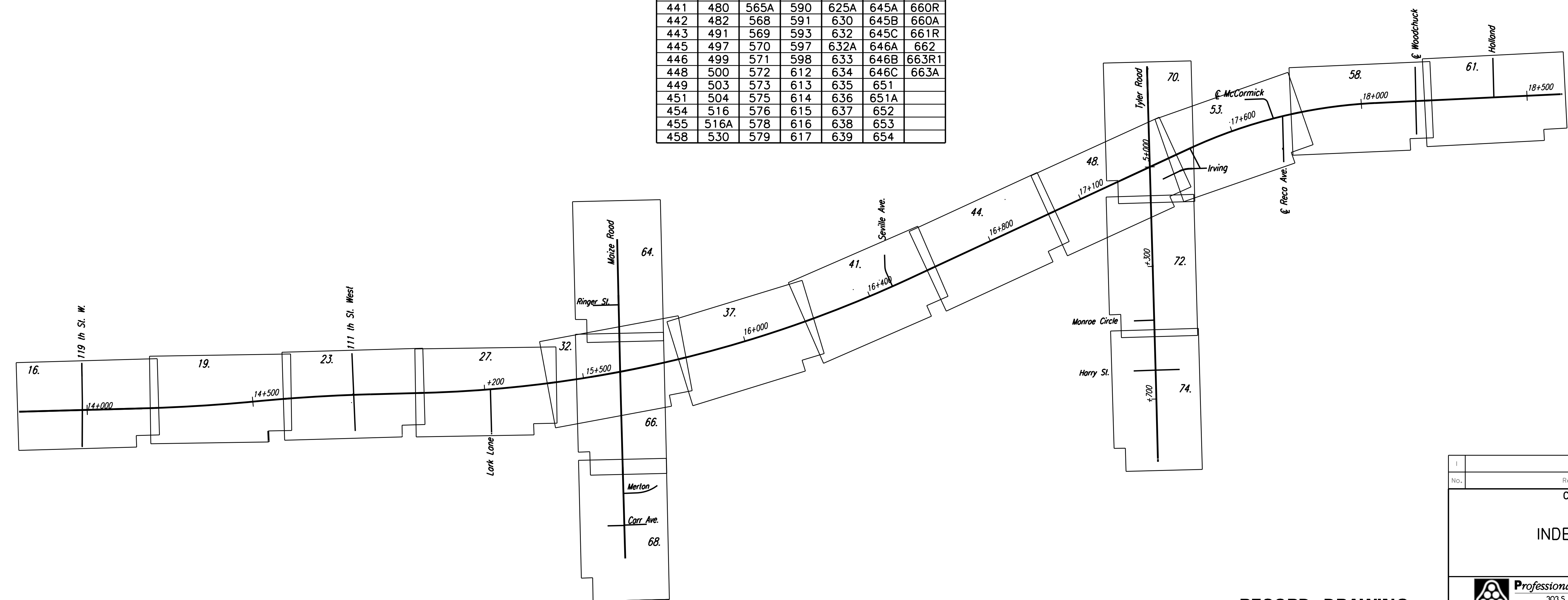
870 847-894  
871A-871N Replaces Sheet No. 847-869

897	Index of Sheets
898-1048	Cross Sections - Mainline and Frontage Roads
1049-1060	Cross Sections - Cowskin
1061-1081	Cross Sections - Maize Road
1082-1106	Cross Sections - Tyler Road
1107-1110	Cross Sections - Woodchuck
1111-1114	Cross Sections - Seville
1115	Cross Sections - Lark
1116	Cross Sections - Irving
1117-1118	Cross Sections - Holland
1119-1120	Cross Sections - Channel Change at Sta. 14+425
1121-1122	Cross Sections - Channel Change at Sta. 17+090

SHEET INDEX FOR RECORD DRAWING EDITS

WEST KELLOGG FREEWAY  
MAIZE AND TYLER ROAD INTERCHANGES PROJECT  
CITY OFF WICHITA PROJECT NUMBER 472-83533

VOLUME 3						
SHEET NUMBER						
434A	461	531	581	618	640	655
435	463	532	582	619	641	655A
435A	467	535	584	621	641A	657R
438	468	544	585	622	642	657A
439	477	562	588	623	643	658R
440	478	565	589	625	644	659
441	480	565A	590	625A	645A	660R
442	482	568	591	630	645B	660A
443	491	569	593	632	645C	661R
445	497	570	597	632A	646A	662
446	499	571	598	633	646B	663R1
448	500	572	612	634	646C	663A
449	503	573	613	635	651	
451	504	575	614	636	651A	
454	516	576	615	637	652	
455	516A	578	616	638	653	
458	530	579	617	639	654	



DSNR: WDH OPER: JGP SCALE: 1:1  
 i:/1997/97362/As-Builts/dgn s/Vol\_3/Sh 434-index.dgn Last Rev: 9-20-07 By: gdr

**RECORD DRAWING**

No.	Revisions	By	Date
CITY OF WICHITA			
INDEX OF SHEETS			
SEDGWICK COUNTY			
<b>Professional Engineering Consultants, P.A.</b> 303 S. TOPEKA • WICHITA, KANSAS 67202 316-262-2691 • FAX 316-262-3003			
Designed by	WDH	Checked by	
Drawn by	JGP	Date	April, 2002
		Job No.	97362