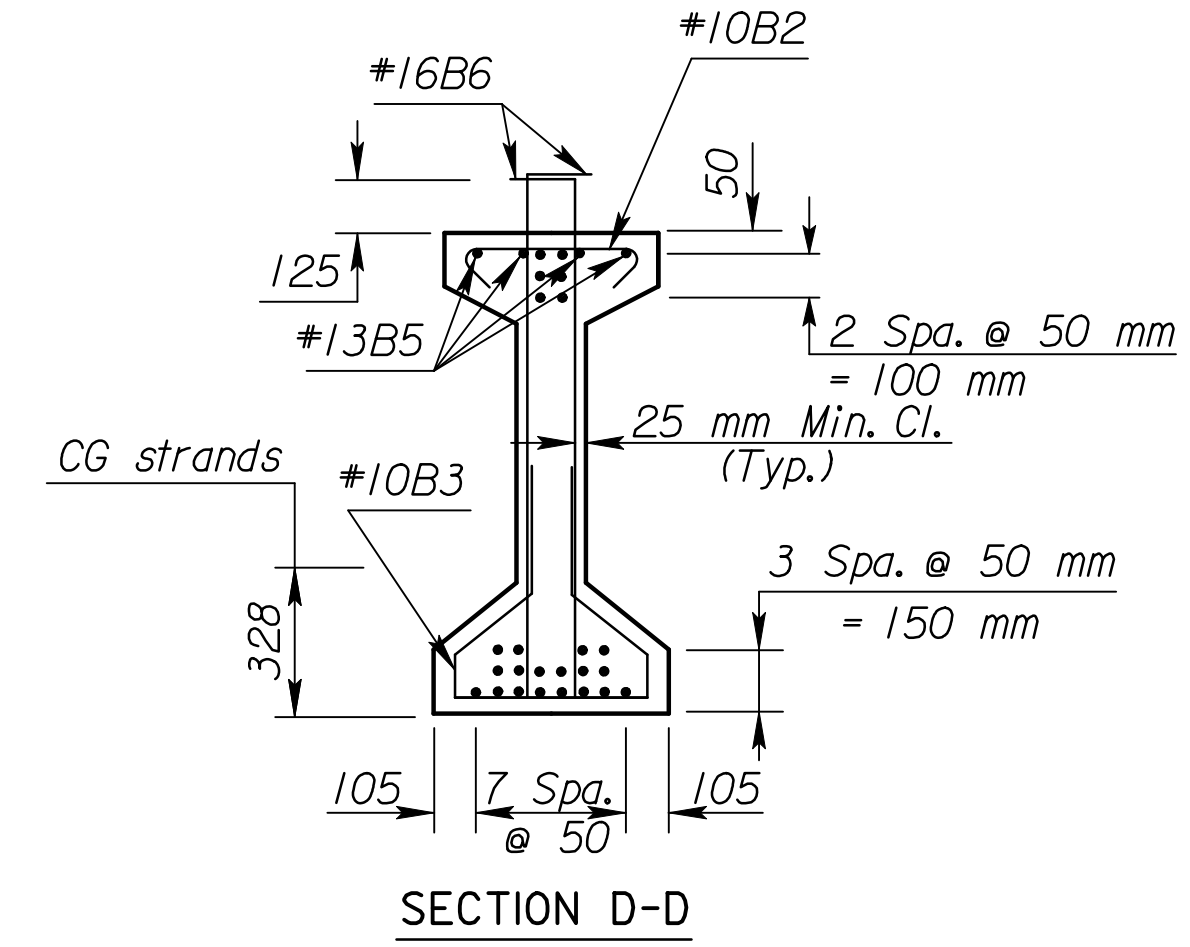
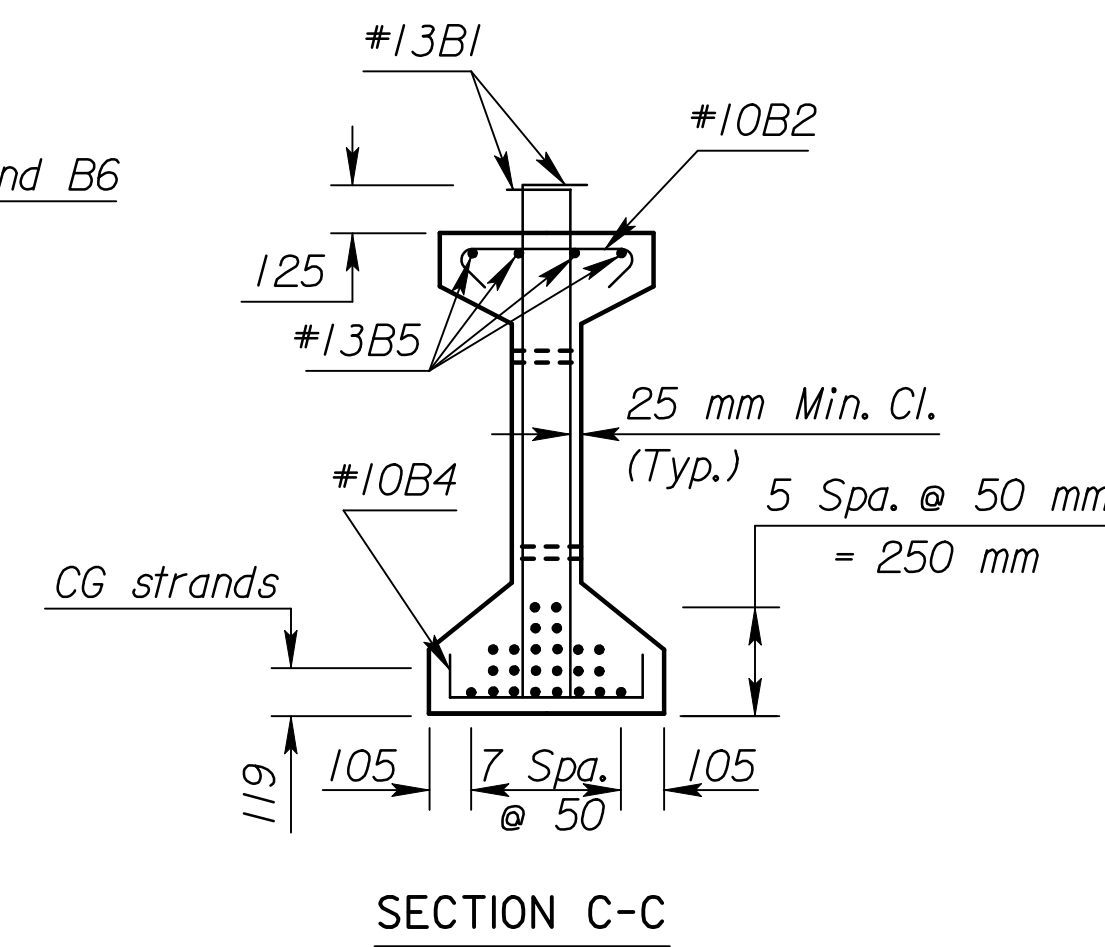
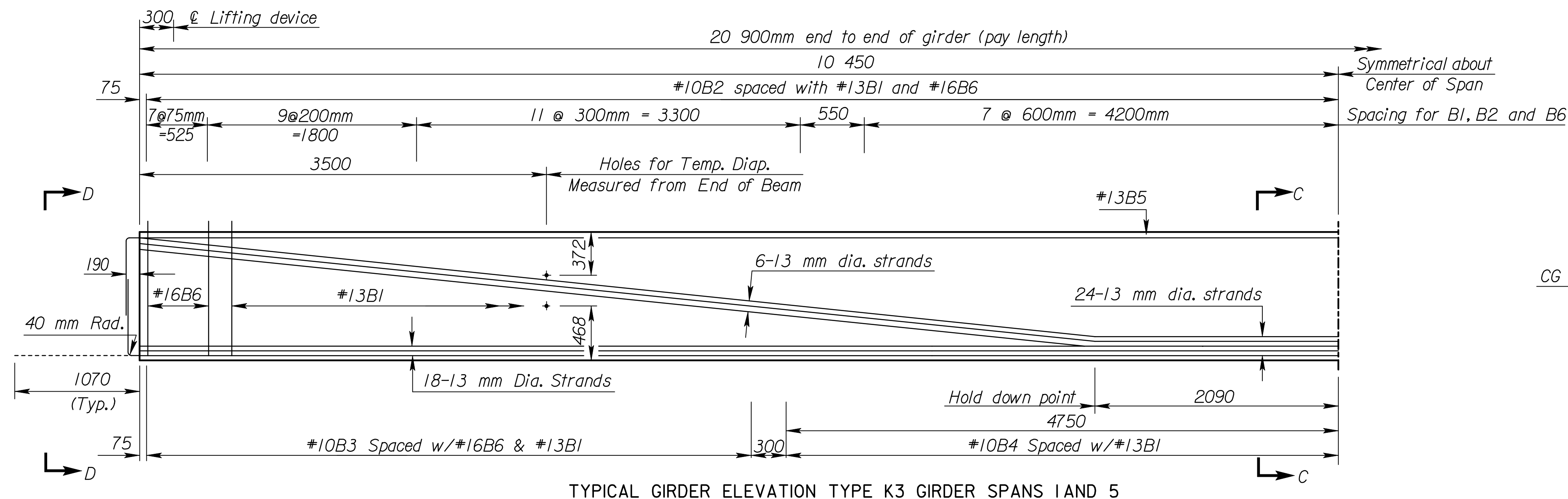
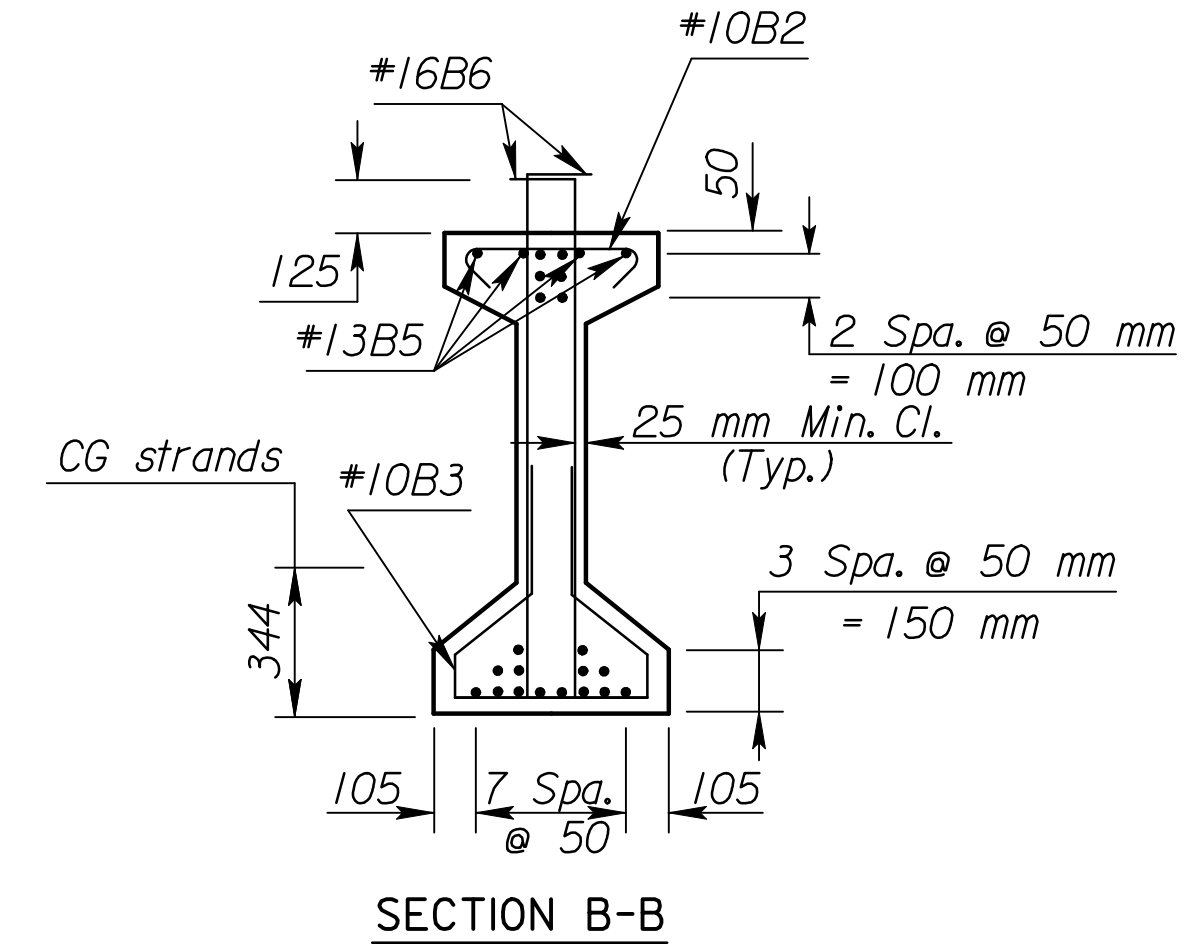
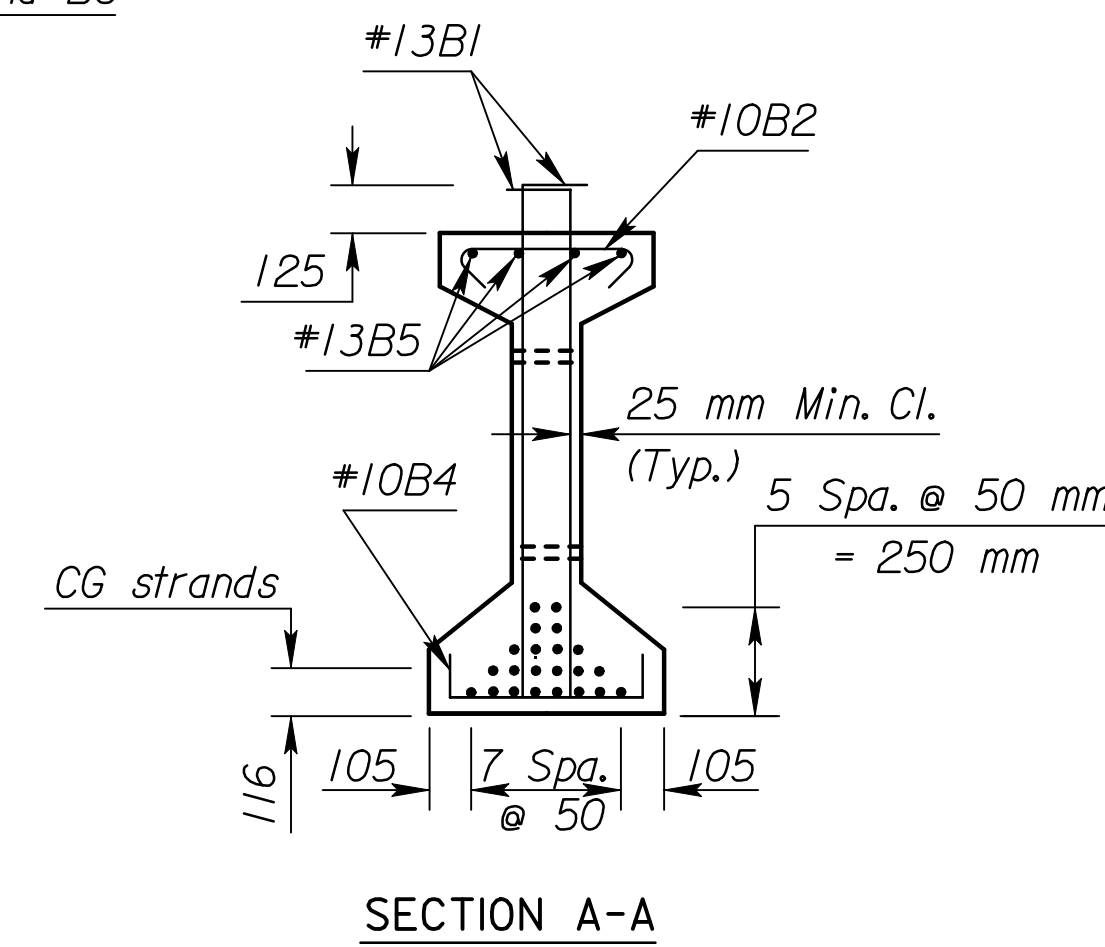
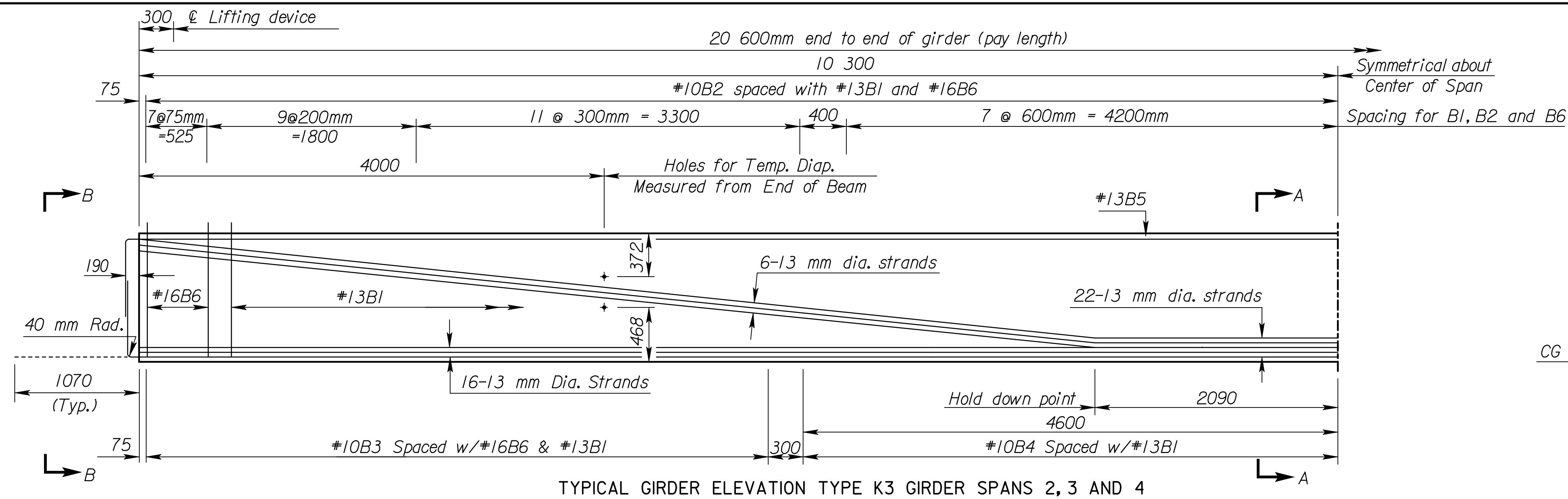


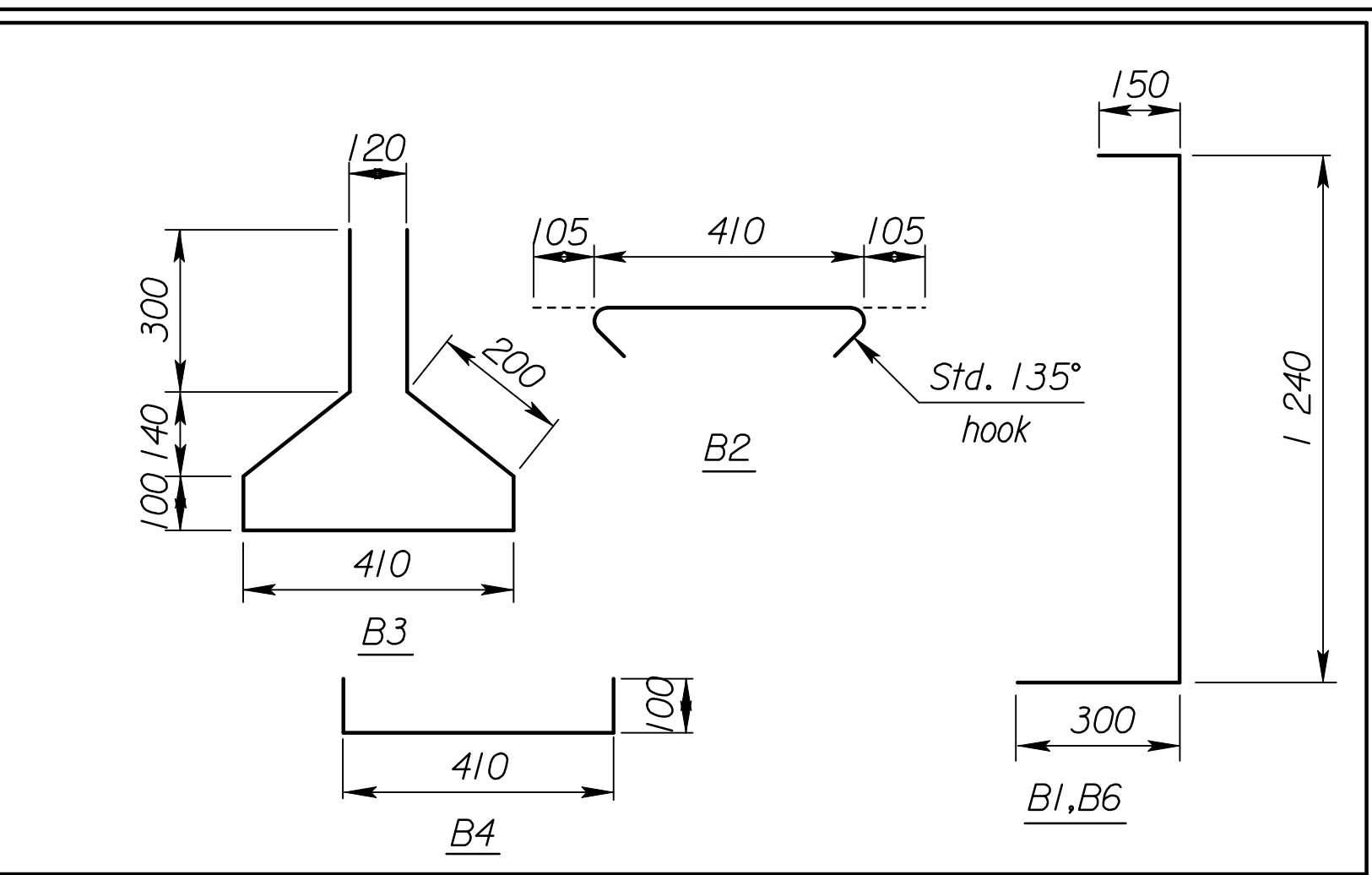
| | | | | |
|--------|-----------------|------|-----------|--------------|
| STATE | PROJECT NO. | YEAR | SHEET NO. | TOTAL SHEETS |
| KANSAS | 54-87 K-6657-01 | 2002 | 518 | 1122 |



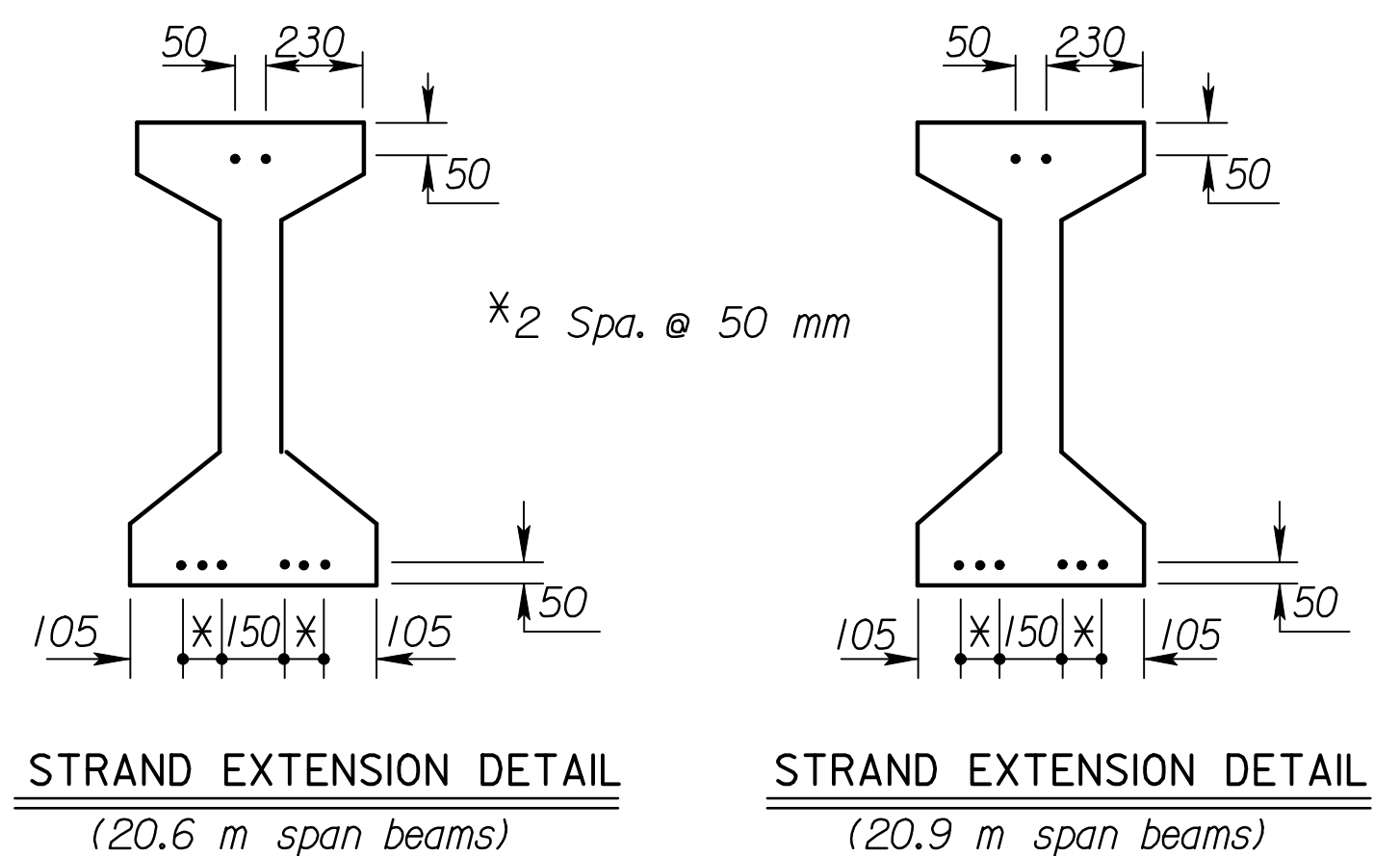
NOTE: During transportation and construction only, support beams on bearing points a maximum of 1520 mm from the beam end.
 The Fabricator shall show the proposed support locations on the shop drawings.
 NOTE: The hold down force at the harp points for 6 strands at 13.98 kN per strand = 83.9 kN total.
 NOTE: Epoxy coat all bars.

NOTE: Extend 8 strands 1070 mm beyond the end of the beam. Strands not shown shall be cut flush with the end of the beam. See "Strand Extension Details".

| BILL OF REINFORCING STEEL | | | | | | | |
|---|-----|------|--------|-----------|-----|------|--------|
| 20.9 m Girder (1 Listed-16 Req'd.) (End spans) | | | | | | | |
| Straight bars | | | | Bent bars | | | |
| Mark | No. | Size | Length | Mark | No. | Size | Length |
| B5 | 8 | #13 | 10 650 | B2 | 71 | #10 | 620 |
| | | | | B3 | 54 | #10 | 1 610 |
| | | | | B4 | 17 | #10 | 610 |
| | | | | B1 | 110 | #13 | 1 690 |
| | | | | B6 | 32 | #16 | 1 690 |
| 20.6 m Girder (1 Listed-24 Req'd.) (Interior spans) | | | | | | | |
| Straight bars | | | | Bent bars | | | |
| Mark | No. | Size | Length | Mark | No. | Size | Length |
| B5 | 8 | #13 | 10 500 | B2 | 71 | #10 | 620 |
| | | | | B3 | 54 | #10 | 1 610 |
| | | | | B4 | 17 | #10 | 610 |
| | | | | B1 | 110 | #13 | 1 690 |
| | | | | B6 | 32 | #16 | 1 690 |



| BILL OF MATERIAL | | |
|--|----------------|----------|
| Item | Unit | Quantity |
| Prestressed concrete beams (K3) End spans (16) | m | 334.4 |
| Prestressed concrete beams (K3) Interior spans (24) | m | 494.4 |
| The following quantities are given for information only and shall not be paid for directly but shall be made subsidiary to the bid item "Prestressed Concrete Beams" | | |
| Beam concrete (f'c = 40 MPa)(f'c = 30 MPa)(per end span beam) | m ³ | 7.08 |
| Beam concrete (f'c = 40 MPa)(f'c = 30 MPa)(per interior span beam) | m ³ | 6.98 |
| Approximate mass per 20 600 beam | t | 16.2 |
| Approximate mass per 20 900 beam | t | 16.4 |
| 13 mm Ø Prestressing strand (Gr. 1860 low relaxation) | m | 19 608 |
| Epoxy reinforcing steel (Gr 420) | kg | 17 274 |
| Elastomeric bearing pads (20 mm x 200 mm x 560 mm) | Each | 80 |
| 20 mm Dia. Coil tie inserts (NC Thread) | Each | — |
| 20 mm Dia. x 450 mm Threaded coil rods | Each | — |
| Lifting devices | Each | 80 |
| Bearing plates (12 mm x 375 mm x 560 mm) | Each | 80 |



RECORD DRAWING

| 3 | | | | |
|---|---------|-----------------|------------|----------|
| 2 | | | | |
| 1 | 4-18-99 | Current release | | |
| NO. | DATE | REVISIONS | BY | APP'D |
| CITY OF WICHITA | | | | |
| Br. No. 54-87-19.31(494) W.B. S+a. 16+011.650 | | | | |
| K3 PRESTRESSED CONCRETE BEAM DETAILS | | | | |
| WESTBOUND KELLOGG (US-54) | | | | |
| Sedgwick Co. | | | | |
| SHEET NO. | OF | DATE | APP'D | |
| DESIGNED | | DETAILED | QUANTITIES | CADD |
| DESIGN CK. | | DETAIL CK. | QUAN. CK. | CADD CK. |

Std. Base File : /usr2/stand/si/br302bsi.dgn
 Plot File : /1/1997/97362/As-Builts/dgn/Vol_3/SP 518-KDOT_ST-D-K3BE-MWB.dgn Last Rev: 9-4-07 By: gdr
 Plotted By : gdr
 Plot Date : Sept. 07