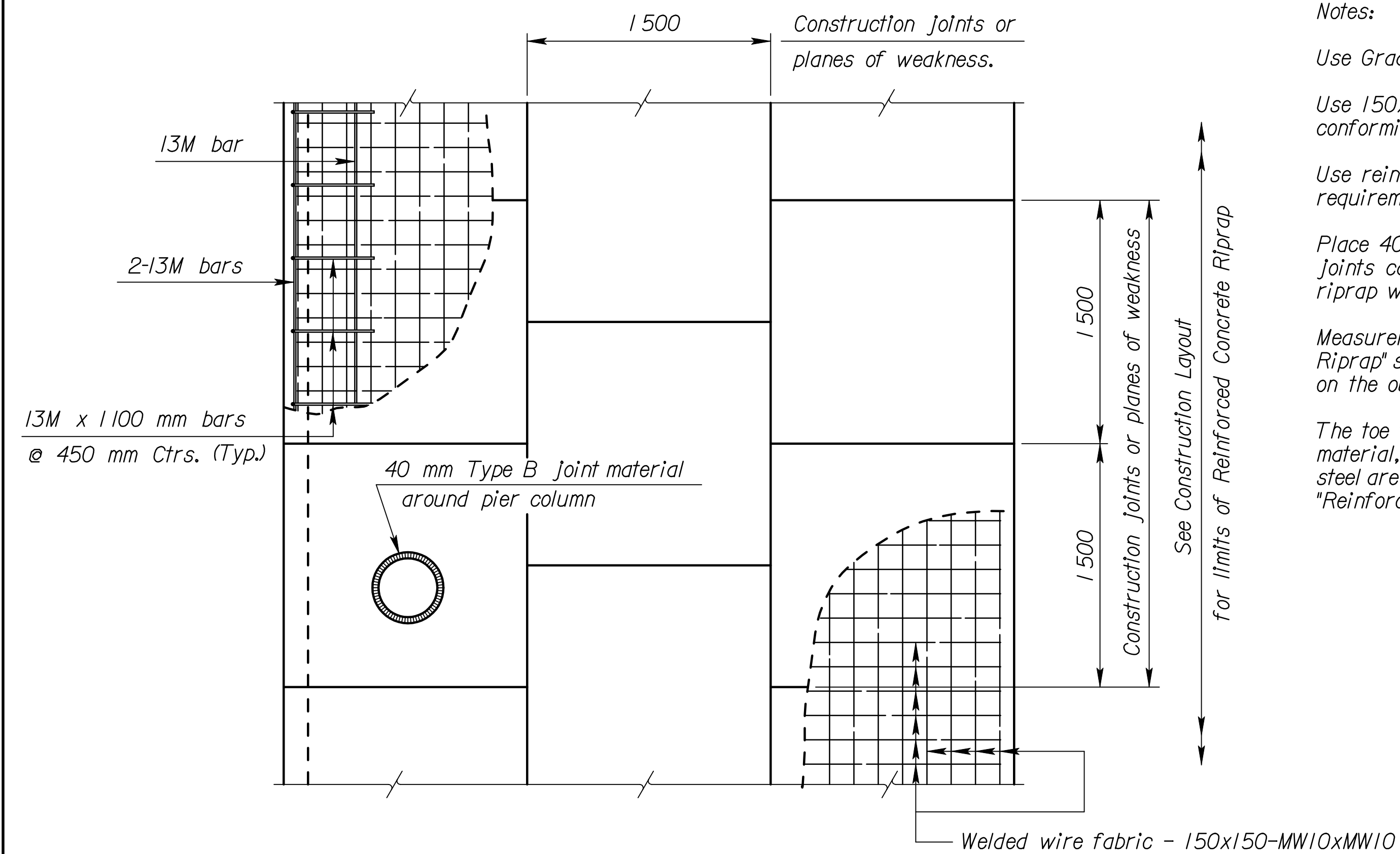


STATE	PROJECT NO.	YEAR	SHEET NO.	TOTAL SHEETS
KANSAS	54-87 K-6657-01	2002	610	1122



**PLAN**  
(Showing Joint Layout)

Notes:

Use Grade 25 concrete for the riprap.

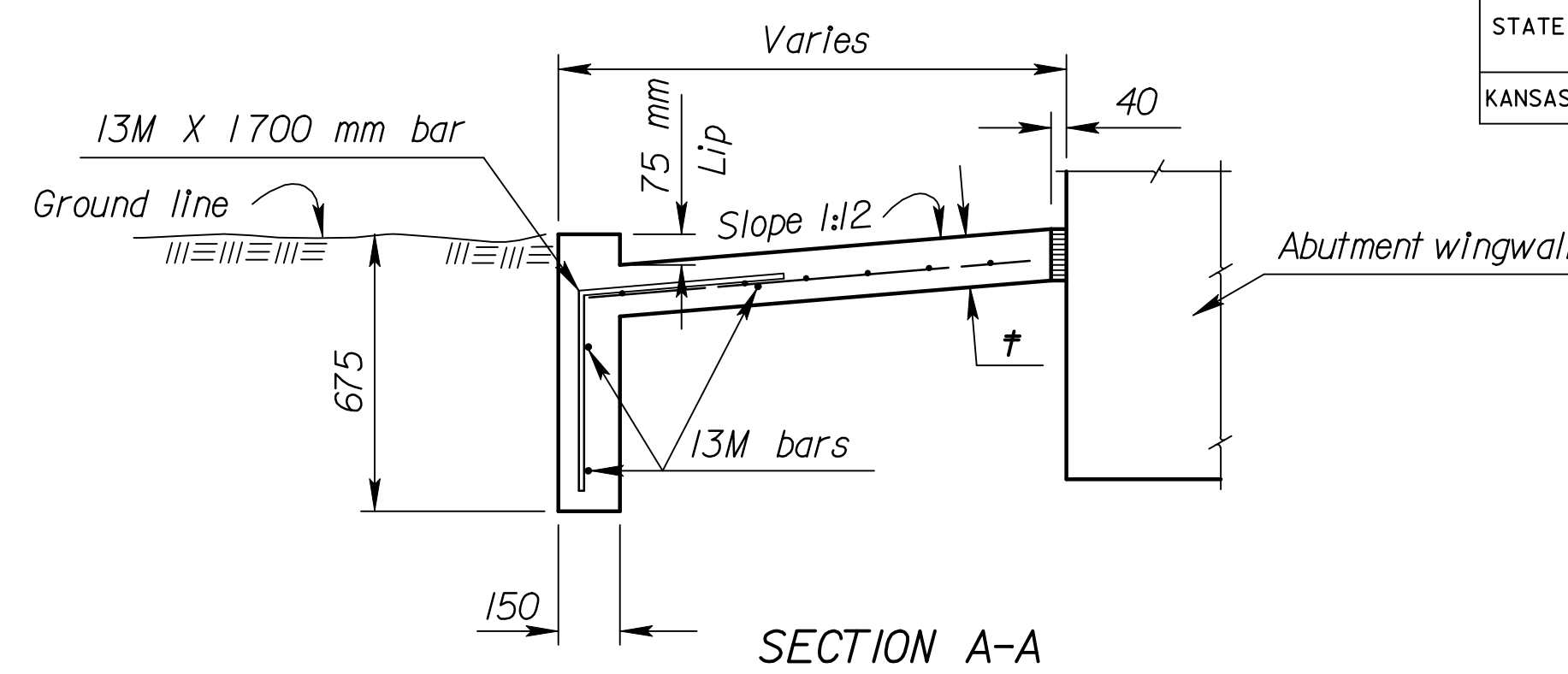
Use 150x150-MW10xMW10 welded wire fabric conforming to the requirements of ASTM A185M.

Use reinforcing steel conforming to the requirements of ASTM A615M-96, Grade 420.

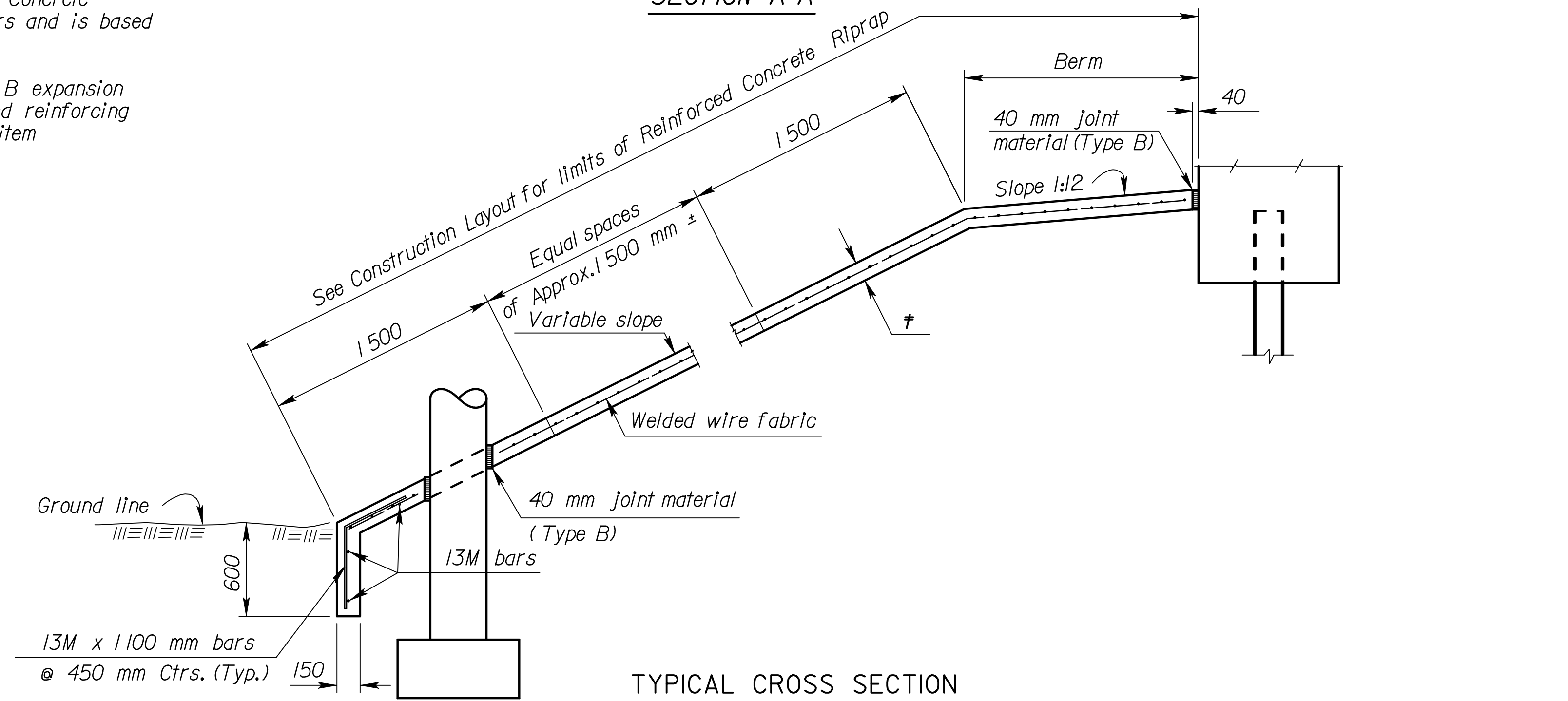
Place 40 mm Type B expansion material in the joints caused by any intersection of the riprap with the abutment, wings, or columns.

Measurement of the "Reinforced Concrete Riprap" shall be in square meters and is based on the outside surface area.

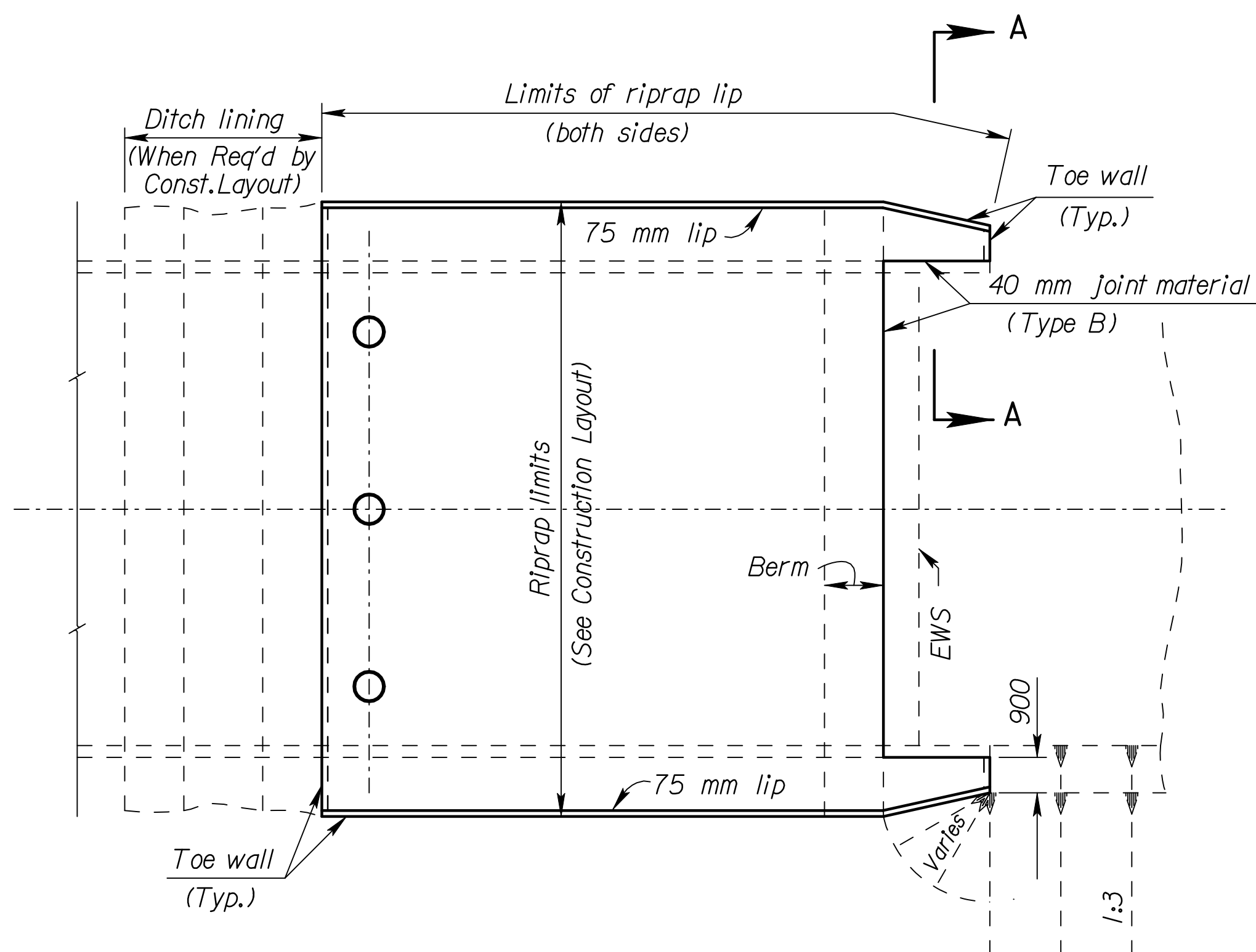
The toe walls, 75 mm lip, Type B expansion material, welded wire fabric, and reinforcing steel are subsidiary to the bid item "Reinforced Concrete Riprap".



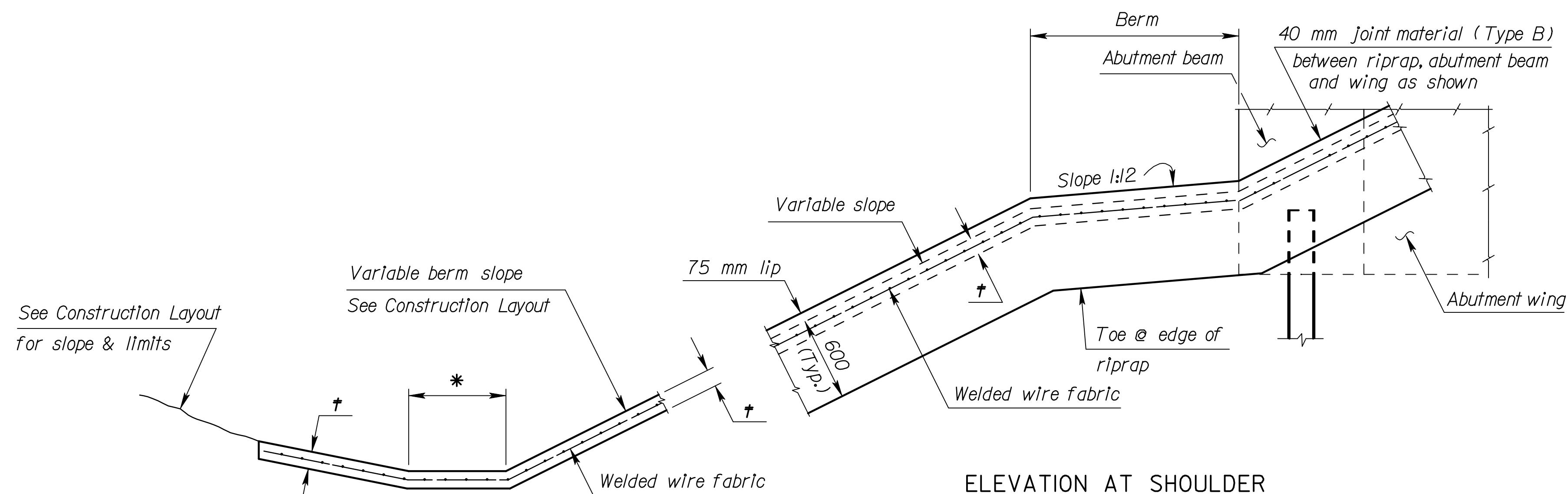
**SECTION A-A**



**TYPICAL CROSS SECTION**



**TYPICAL PLAN**



**ELEVATION AT SHOULDER**

\* See Construction Layout for this dimension (300 mm Min.).

† See Construction Layout for thickness.

**DITCH BOTTOM**

(When Required by Construction Layout sheet)

**RECORD DRAWING**

Plotted By : gdr  
 Plot File : I:\1997\97362\As-Builts\dgrs\Vol\_3\SH 610-KDOT STD-BRI30SI.dgn  
 Plot Date : Sept. 07  
 Last Rev: 9-7-07 By: gdr

NO.	DATE	REVISIONS	BY	APP'D
2	6-23-97	Change resteelgrade	LRR	KFH
1	3-27-96	ASTM A615M-96 Changes	LRR	KFH

KANSAS DEPARTMENT OF TRANSPORTATION			
REINFORCED CONCRETE RIPRAP			
BRI30 SI			
DESIGNED	7-9-97	APP'D	KENNETH F. HURST
DESIGN CK.	DETAIL CK.	LRR QUAN. CK.	CADD CK.