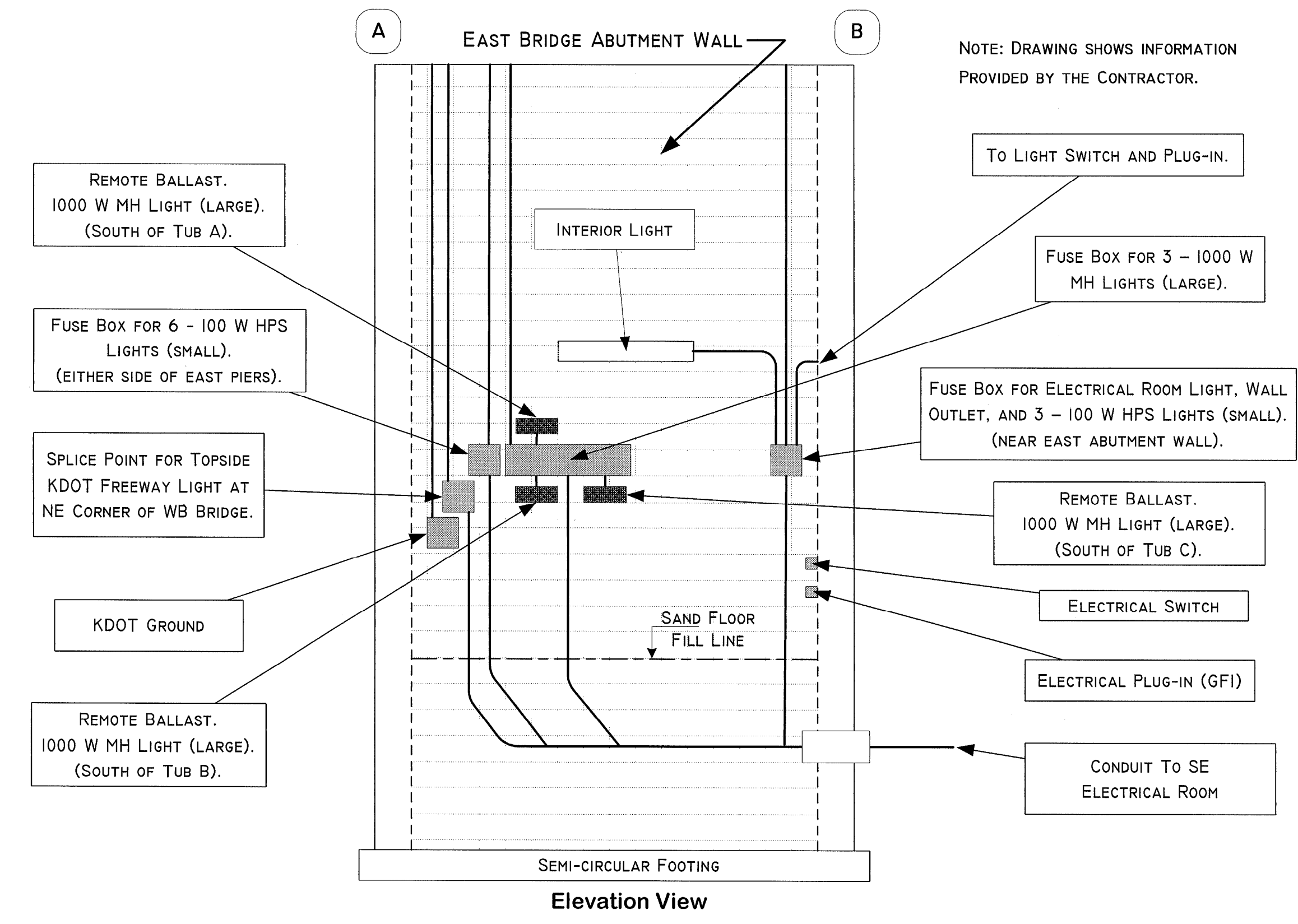
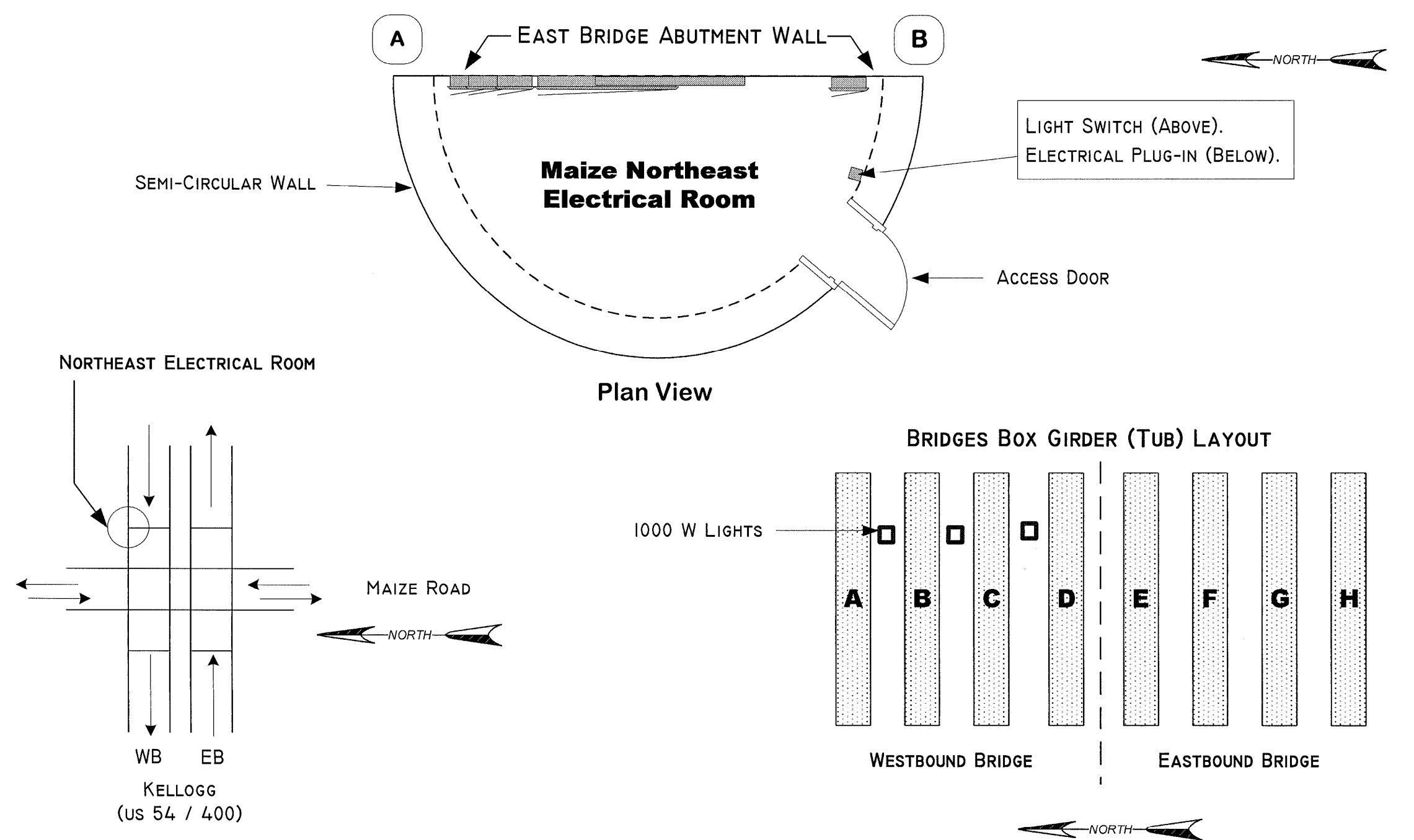


FHWA REGION NO.	STATE	PROJECT NO.	YEAR	SHEET NO.	TOTAL SHEETS
7	KANSAS	54-87 K-6657-01	2002	645c	1122

BRIDGE ELECTRICAL ROOM LAYOUT @ MAIZE ROAD

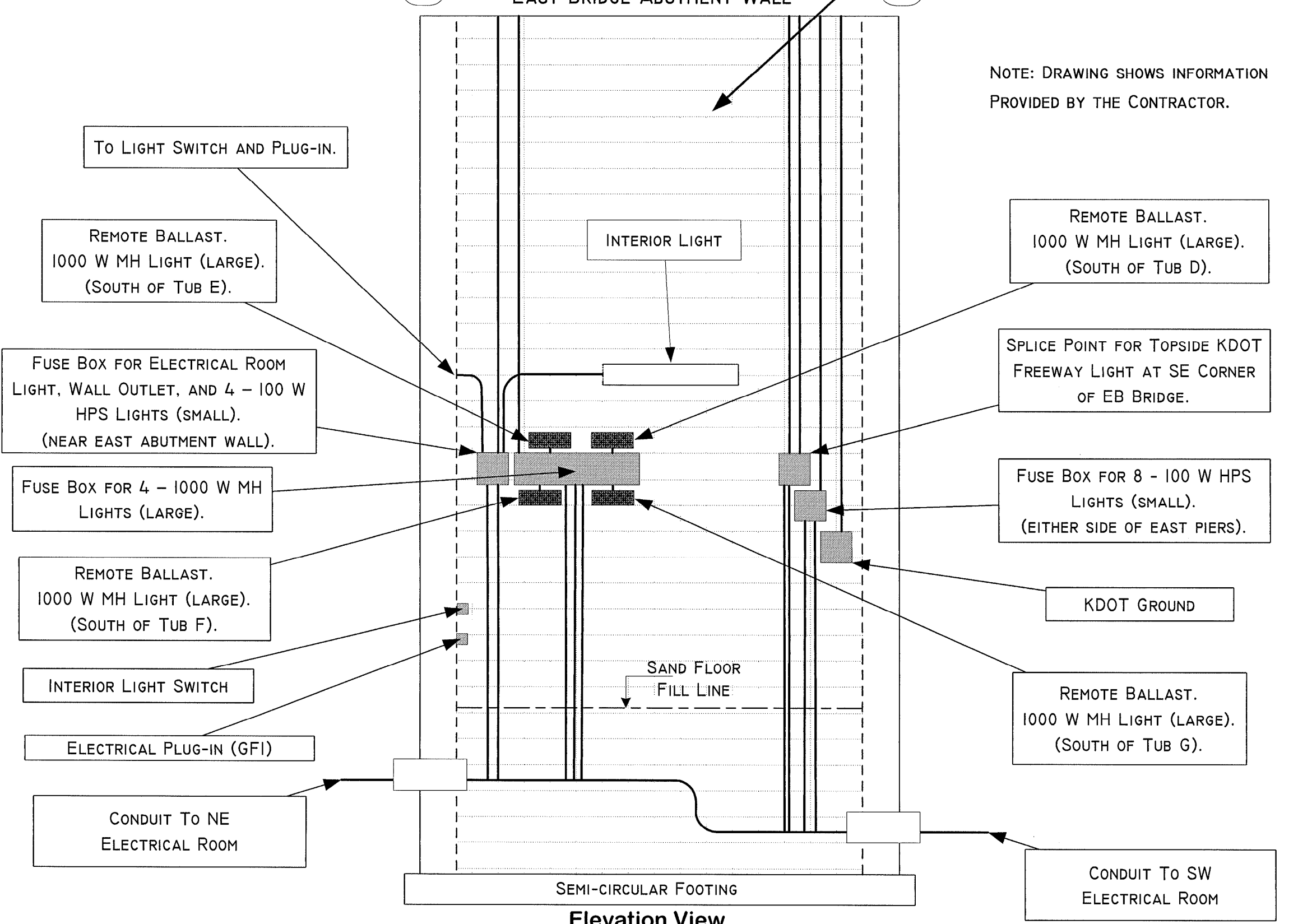
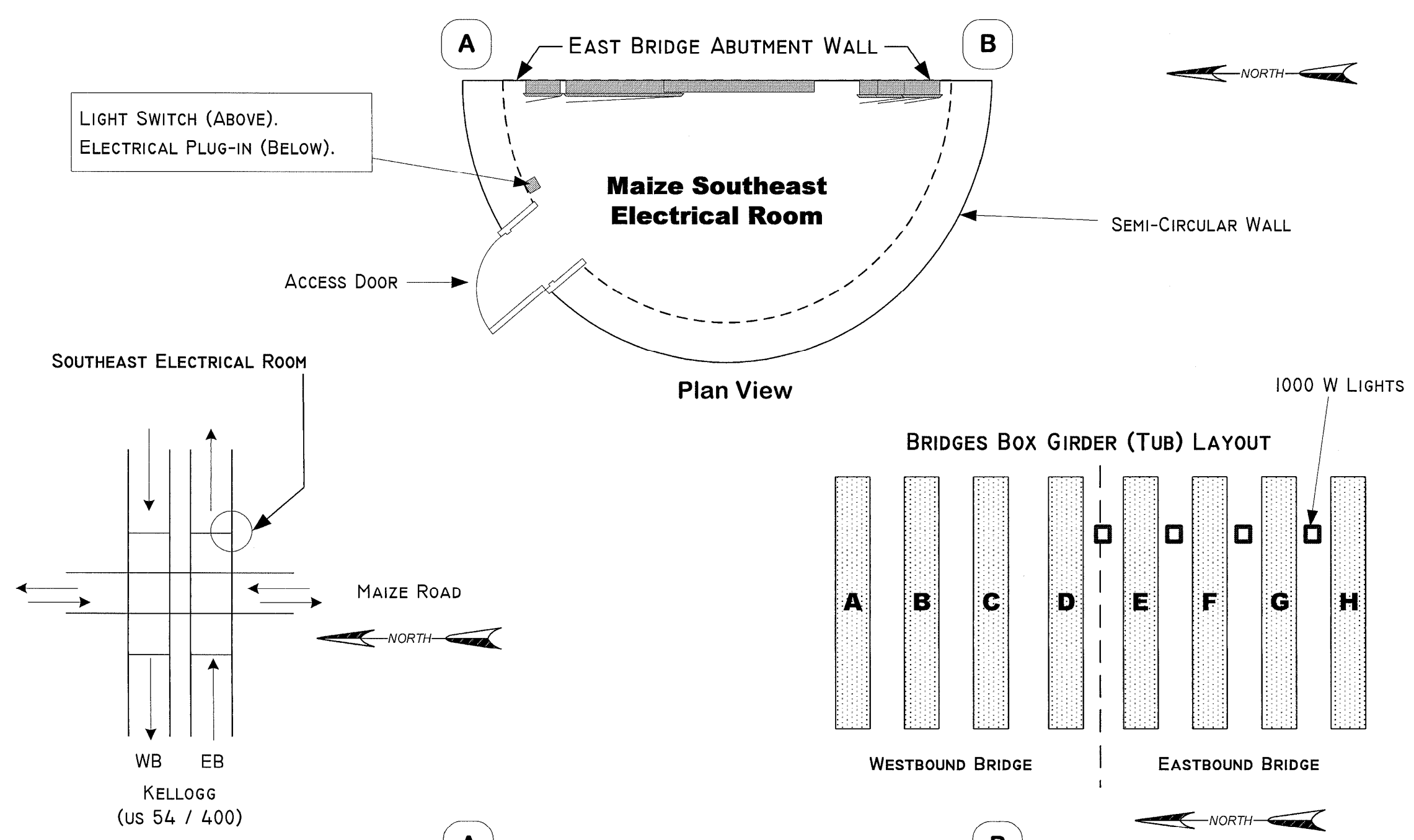
WEST KELLOGG FREEWAY – MAIZE AND TYLER ROAD INTERCHANGES
 CITY OF WICHITA PROJECT NO: 472 – 83533
 K.D.O.T. PROJECT NO: 54 – 87 K 6657 - 01



NOTE: 1000 W MH AND 100 W HPS LIGHTS ARE "UNDER BRIDGE LIGHTS" BELOW EAST HALF OF BRIDGE No. 54 – 87 – 19.05 (489) WB KELLOGG.

BRIDGE ELECTRICAL ROOM LAYOUT @ MAIZE ROAD

WEST KELLOGG FREEWAY – MAIZE AND TYLER ROAD INTERCHANGES
 CITY OF WICHITA PROJECT NO: 472 – 83533
 K.D.O.T. PROJECT NO: 54 – 87 K 6657 - 01



NOTE: 1000 W MH AND 100 W HPS LIGHTS ARE "UNDER BRIDGE LIGHTS" BELOW EAST HALF OF BRIDGE No. 54 – 87 – 19.06 (491) EB KELLOGG.

RECORD DRAWING

No.	Revisions	By	Date
CITY OF WICHITA			
BRIDGE ELECTRICAL ROOM LAYOUT MAIZE ROAD			
SEDGWICK COUNTY			
Professional Engineering Consultants, P.A. 303 S. TOPEKA - WICHITA, KANSAS 67202 316-262-2691 • FAX 316-262-3003			
Designed by	Checked by		
Drawn by	Date	Job No.	97362

DSNR: WDH OPER: JGP SCALE: i:/1997/97362/As-Builts/dgn/s/Vol_3/V8_Files_With_Rasters/Sh_645c-Maize_Elec_Room.dgn Last Rev: 9-18-07 By: gdr