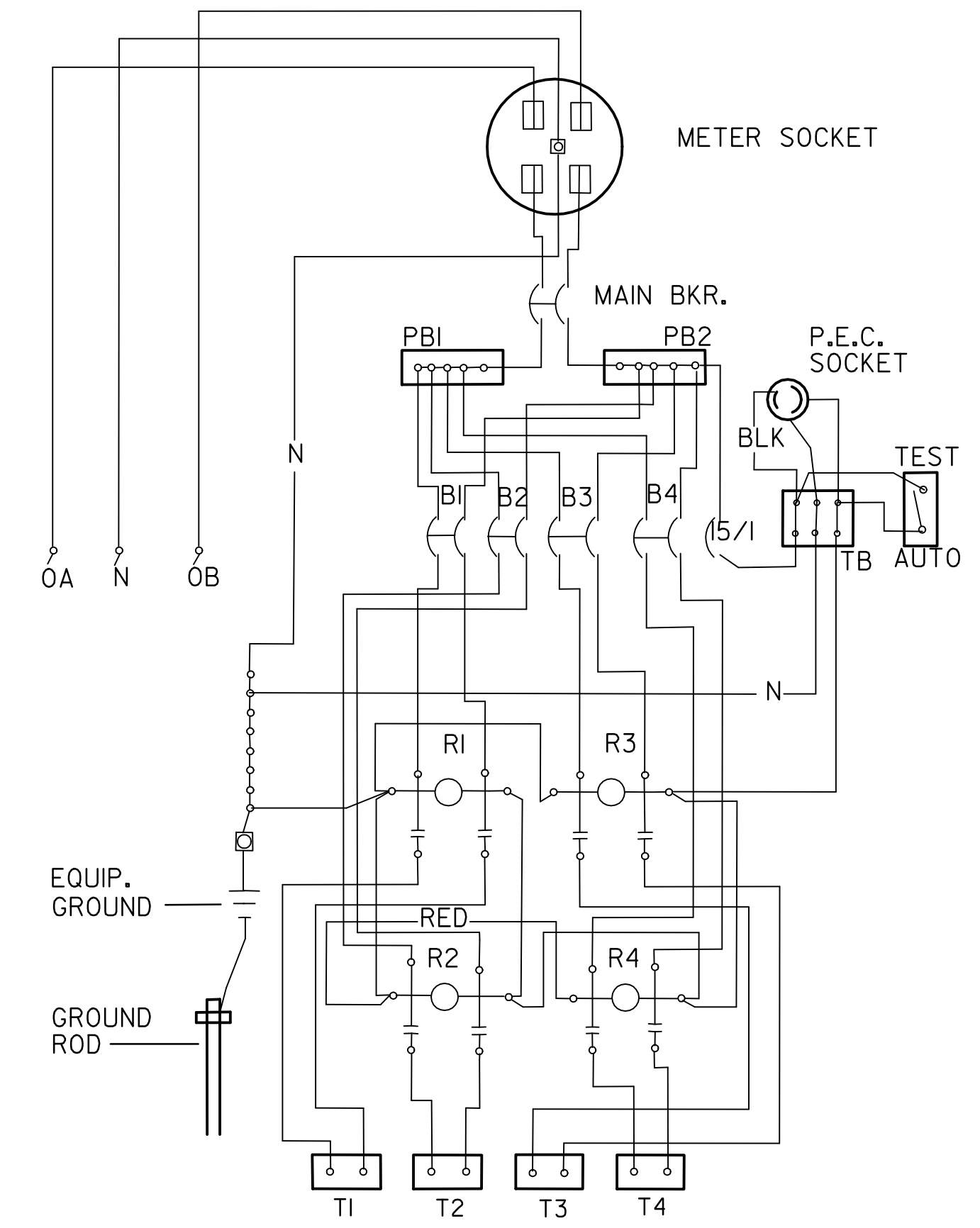
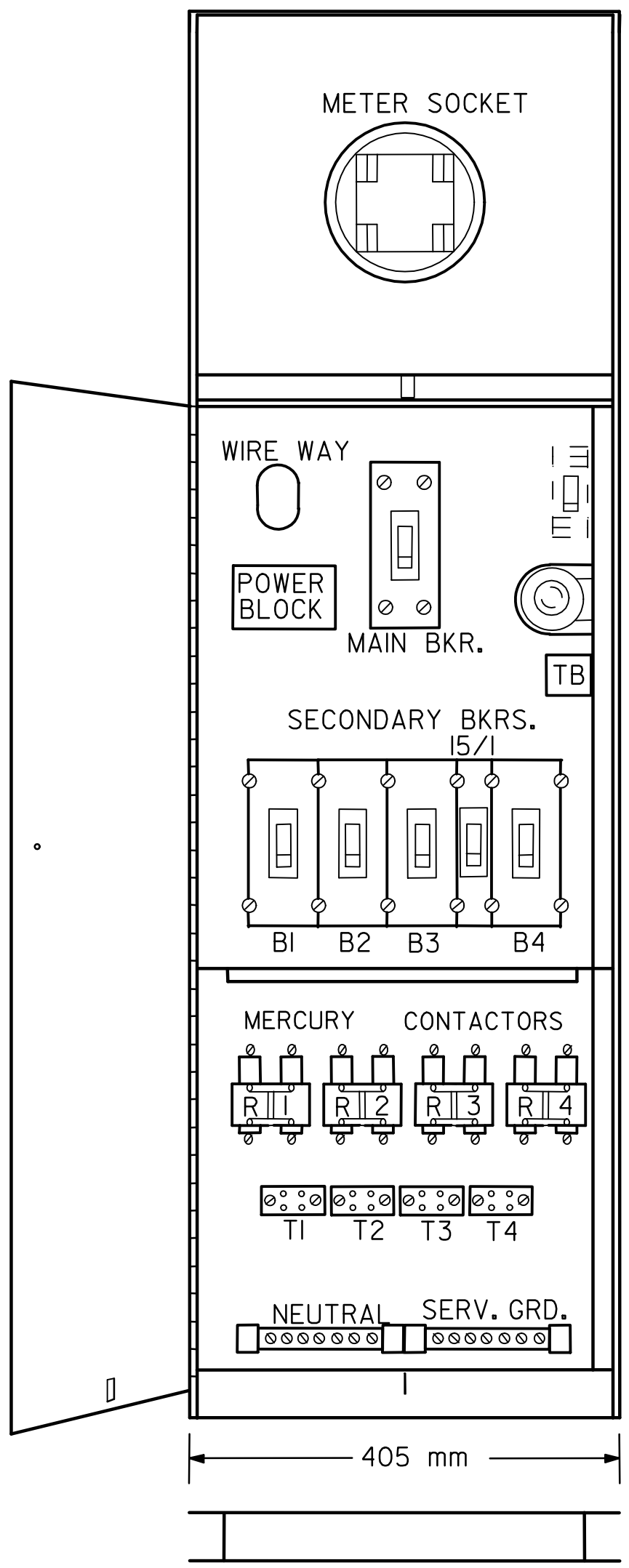


FHWA REGION NO.	STATE	PROJECT NO.	YEAR	SHEET NO.	TOTAL SHEETS
7	KANSAS	54-87 K-6657-01	2002	649	1122

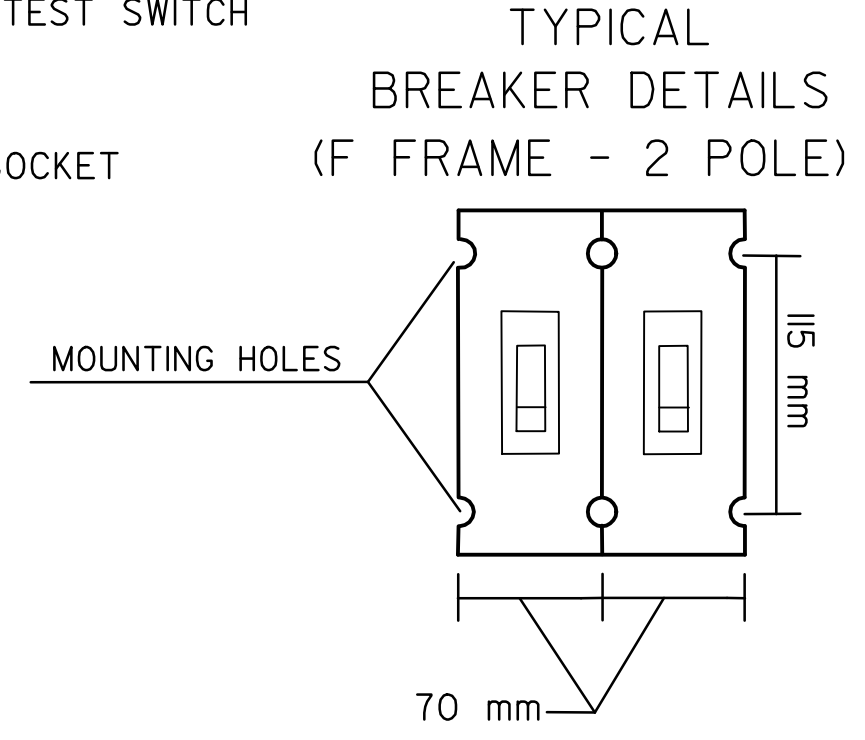
NOTE:
DIMENSIONS WILL INCREASE IN WIDTH AS REQUIRED FOR 5 OR MORE CIRCUIT BREAKERS & MERCURY CONTACTORS.



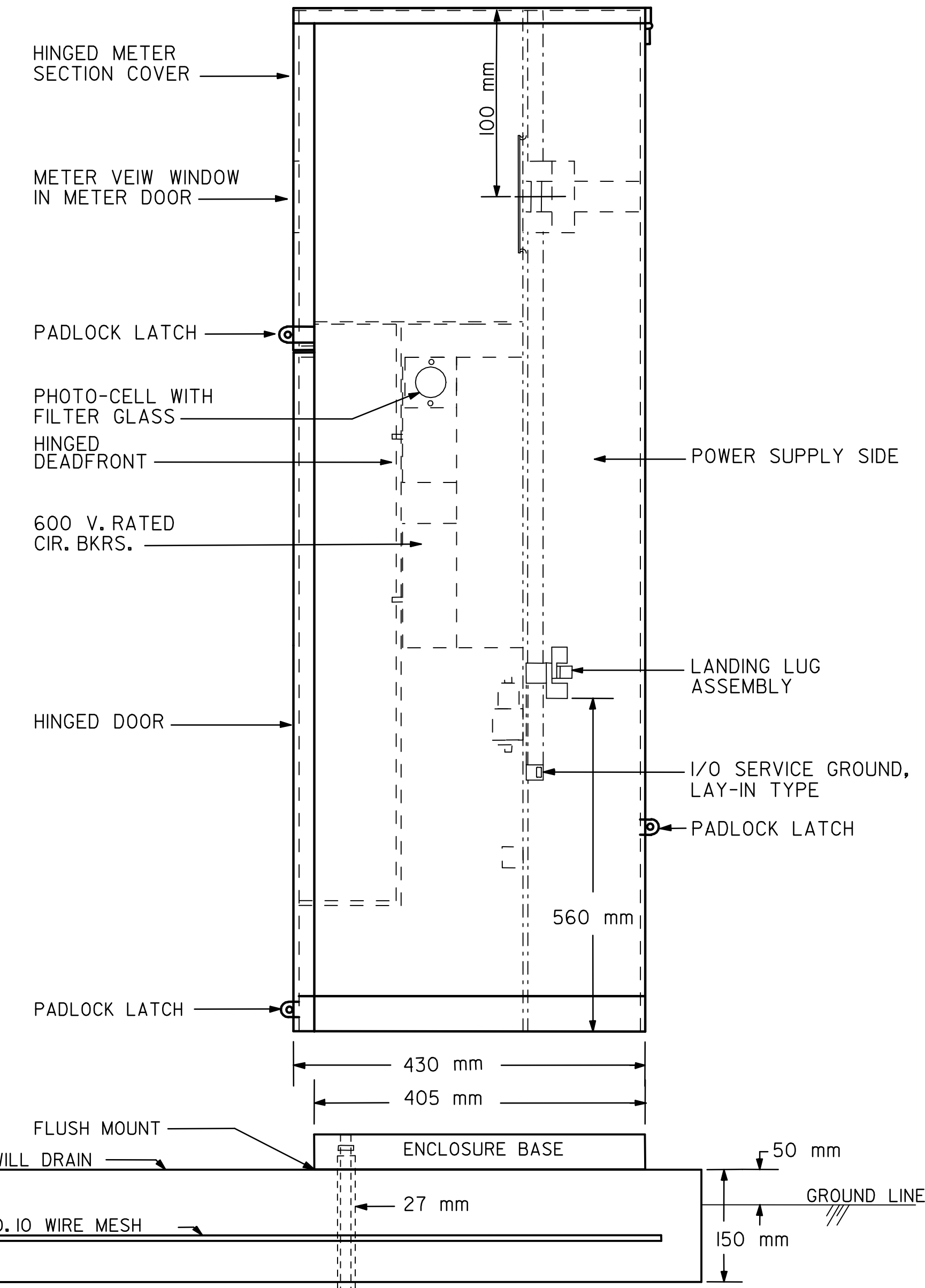
WIRING DIAGRAM



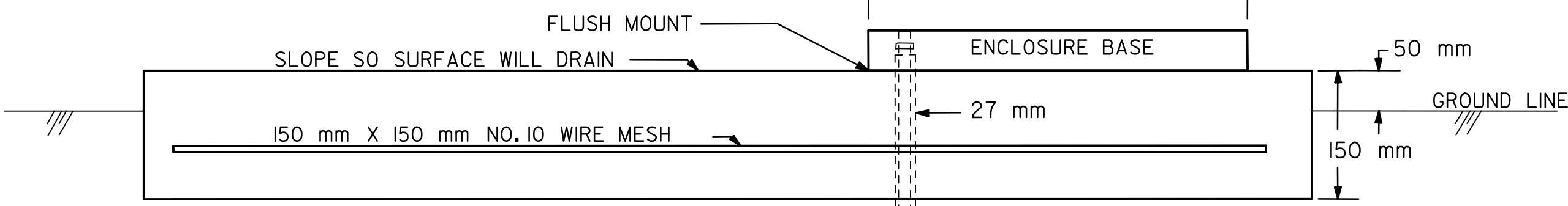
FRONT VIEW



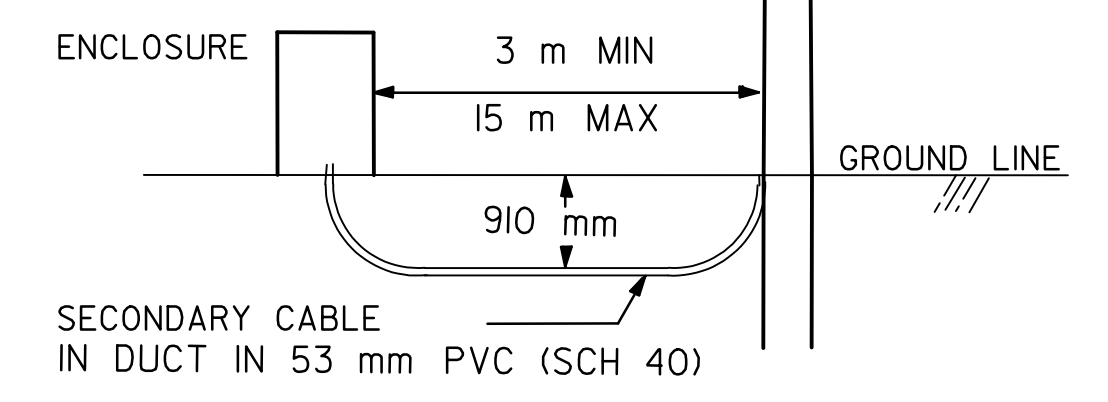
TYPICAL BREAKER DETAILS (F FRAME - 2 POLE)



SIDE VIEW



NOTE: GROUND ROD SHALL EXTEND 50 mm ABOVE THE CONCRETE PAD INSIDE OF ENCLOSURE BASE.



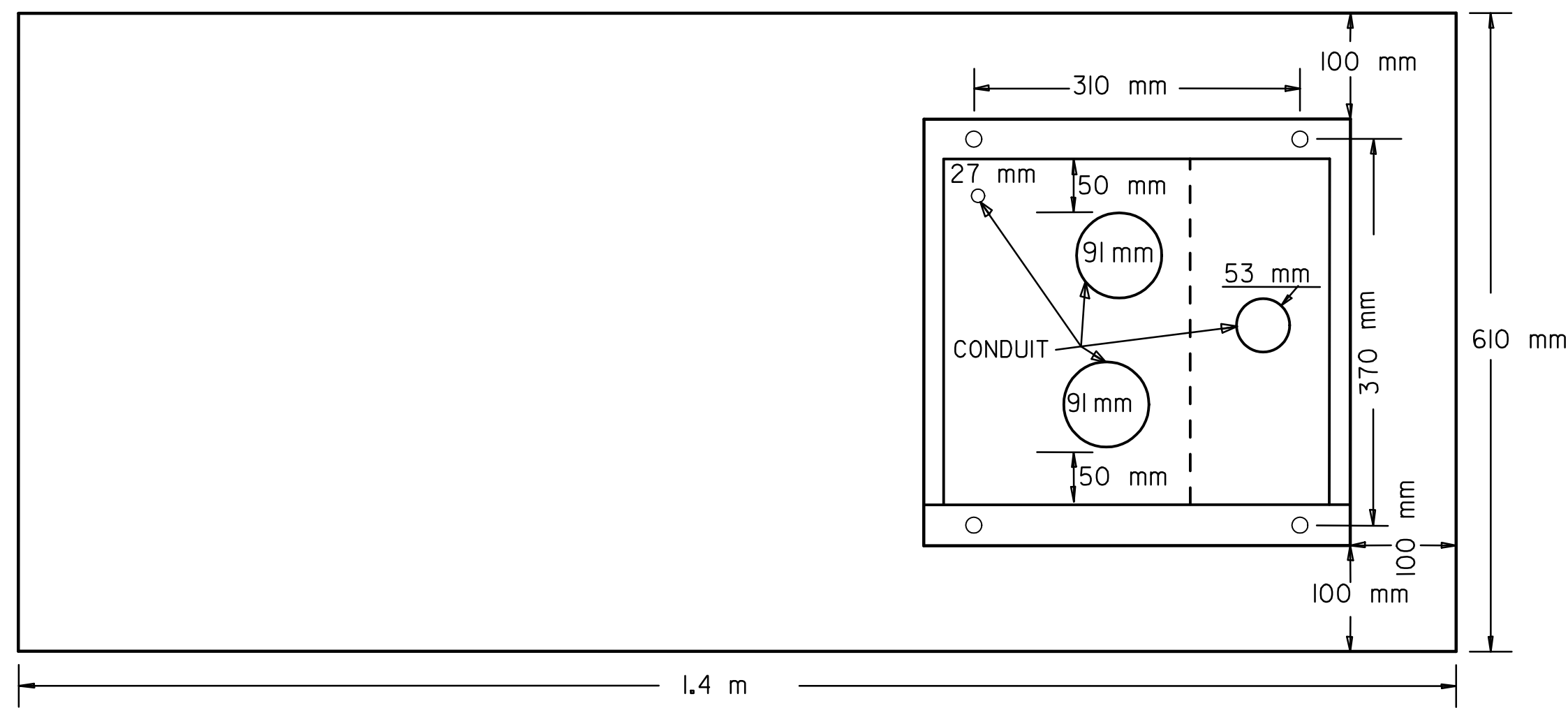
POWER ARRANGEMENT

NOTE: POWER ARRANGEMENT SHALL MEET THE LOCAL UTILITY COMPANIES SPECIFICATIONS.

NOTE: THE DUCT FOR SECONDARY CABLE SHALL EXTEND 25 mm PAST THE END OF THE CONDUIT BEND.

NOTE: 90 mm CONDUIT TO EXTEND 25 mm MIN. ABOVE CONCRETE SURFACE.

PAD DIMENSIONS SHALL BE ADJUSTED ACCORDINGLY FOR THE WIDTH OF THE ENCLOSURE TO BE INSTALLED.



TOP VIEW

NOTES:

THE ENCLOSURE CABINET SHALL BE CONSTRUCTED OF 5052 ALLOY ALUMINUM 3 mm THICK. THE CABINET SHALL BE OF CLEAN CUT DESIGN HAVING NO SHARP EDGES, CORNERS OR PROJECTIONS.

THE CUSTOMER DOOR SHALL BE HINGED THE FULL LENGTH OF THE DOOR AND HAVE SUITABLE MEANS OF HOLDING THE DOOR IN THE FULLY OPEN POSITION.

THE DEAD FRONT DOOR SHALL BE HINGED AND HAVE 3/4 TURN CLIPS OR OTHER SUITABLE MEANS OF LOCKING.

SERVICE ENTRANCE IN BACK OF ENCLOSURE SHALL HAVE A HINGED OR A LIFT OFF COVER WITH PADLOCK PROVISIONS.

THE SECONDARY BREAKER FOR THE PHOTO-CELL CIRCUIT SHALL BE 277 VOLT, 15 AMP SINGLE POLE. THE SECONDARY BREAKER FOR THE PHOTO-CELL CIRCUIT FOR THE UNDER BRIDGE LIGHT ENCLOSURES SHALL BE 120 VOLT, 15 AMP SINGLE POLE. PROVIDE ASTRONOMICAL TIMECLOCK IN ADDITION TO THE PHOTO-CELL FOR THE UNDER BRIDGE LIGHTING ENCLOSURES.

THE WIRING FROM PBI AND PB2 TO T1 THROUGH T4 SHALL BE NO. 6 A.W.G. THW.

THE WIRING FOR THE LOAD AND LINE SIDE OF THE MAIN BREAKER SHALL BE THE SAME SIZE WITH THW WIRE.

THE WIRING FOR THE P.E.C. CIRCUIT SHALL BE NO. 12 A.W.G. THW.

SEE LIGHTING PLAN SHEETS FOR CIRCUIT BREAKER AND CONTACTOR SIZES.

DSMR: WAN OPER: WAN SCALE: 500 12/1997/97362/As-Built/s/dgn's/VoL3/Sh 649-KDOT STD-WK4649.dgn Last Rev: 9-18-07 By: gdr

3					
2					
1					
NO.	DATE	REVISION	BY	APP'D	

KANSAS DEPARTMENT OF TRANSPORTATION
TYPICAL ENCLOSURE DETAILS

TE202S1					
DESIGNED	KG	8/16/94	APP'D	LINDA G. VOSS	TRACED
DESIGN CK.	KG	DETAIL CK.	QUAN. CK.	TRACED CK.	

RECORD DRAWING