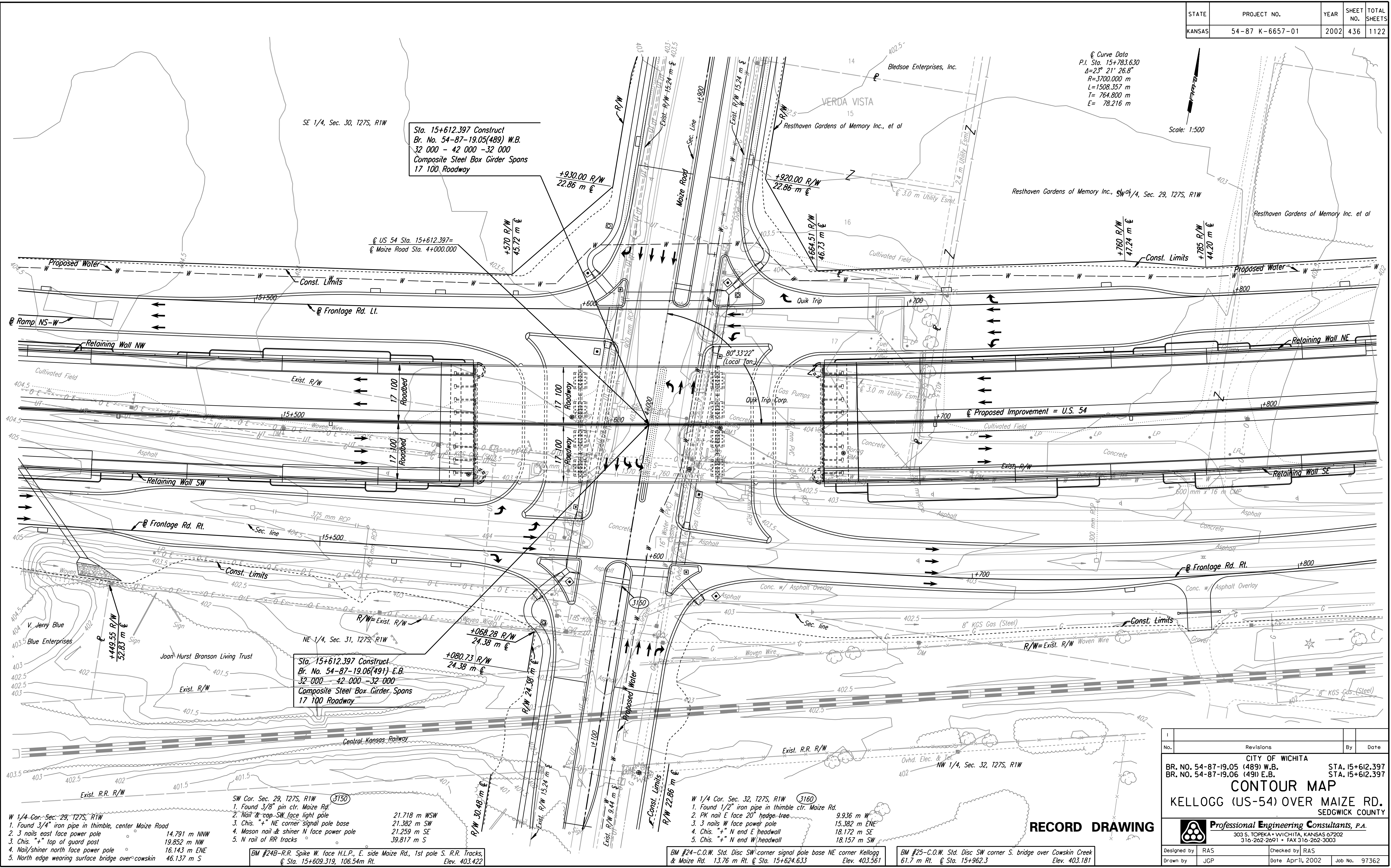


STATE	PROJECT NO.	YEAR	SHEET NO.	TOTAL SHEETS
KANSAS	54-87-K-6657-01	2002	436	1122

DATE	
BY	
REFERENCES NOTED	
REFERENCES CHECKED	



Curve Data
 P.I. Sta. 15+783.630
 $\Delta=23^\circ 21' 26.8''$
 $R=3700.000\text{ m}$
 $L=1508.357\text{ m}$
 $T=764.800\text{ m}$
 $E=78.216\text{ m}$

Scale: 1:500

Sta. 15+612.397 Construct
 Br. No. 54-87-19.05(489) W.B.
 32 000 - 42 000 - 32 000
 Composite Steel Box Girder Spans
 17 100 Roadway

Sta. 15+612.397 Construct
 Br. No. 54-87-19.06(491) E.B.
 32 000 - 42 000 - 32 000
 Composite Steel Box Girder Spans
 17 100 Roadway

- W 1/4 Cor. Sec. 29, T27S, R1W
1. Found 3/4" iron pipe in thimble, center Maize Road 14.791 m NNW
 2. 3 nails east face power pole 19.852 m NW
 3. Chis. "+" top of guard post 16.143 m ENE
 4. Nail/shiner north face power pole 16.143 m ENE
 5. North edge wearing surface bridge over cowskin 46.137 m S

- SW Cor. Sec. 29, T27S, R1W (3150)
1. Found 3/8" pin clt. Maize Rd. 21.718 m WSW
 2. Nail & cap SW face light pole 21.382 m SW
 3. Chis. "+" NE corner signal pole base 21.259 m SE
 4. Mason nail & shiner N face power pole 39.817 m S
 5. N rail of RR tracks 39.817 m S

- W 1/4 Cor. Sec. 32, T27S, R1W (3160)
1. Found 1/2" iron pipe in thimble clt. Maize Rd. 9.936 m W
 2. PK nail E face 20" hedge-tree 15.382 m ENE
 3. 3 nails W face power pole 18.172 m SE
 4. Chis. "+" N end E headwall 18.157 m SW
 5. Chis. "+" N end W headwall 18.157 m SW

- BM #24-C.O.W. Std. Disc SW corner signal pole base NE corner Kellogg & Maize Rd. 13.76 m Rt. @ Sta. 15+624.633 Elev. 403.561

- BM #25-C.O.W. Std. Disc SW corner S. bridge over Cowskin Creek 61.7 m Rt. @ Sta. 15+962.3 Elev. 403.181

RECORD DRAWING

No.	Revisions	By	Date

CITY OF WICHITA
 BR. NO. 54-87-19.05 (489) W.B. STA. 15+612.397
 BR. NO. 54-87-19.06 (491) E.B. STA. 15+612.397

CONTOUR MAP
 KELLOGG (US-54) OVER MAIZE RD.
 SEDGWICK COUNTY

Professional Engineering Consultants, P.A.
 303 S. TOPEKA • WICHITA, KANSAS 67202
 316-262-2691 • FAX 316-262-3003

Designed by: RAS
 Drawn by: JGP

Checked by: RAS
 Date: April, 2002
 Job No.: 97362

DSMR: RAS OPER: MLL SCALE: 1:500
 I:/1997/97362/As-Builts/dgn's/Vol_3/Sh 436-MAIZECON.dgn Last Rev. 8-29-07 By: gdr