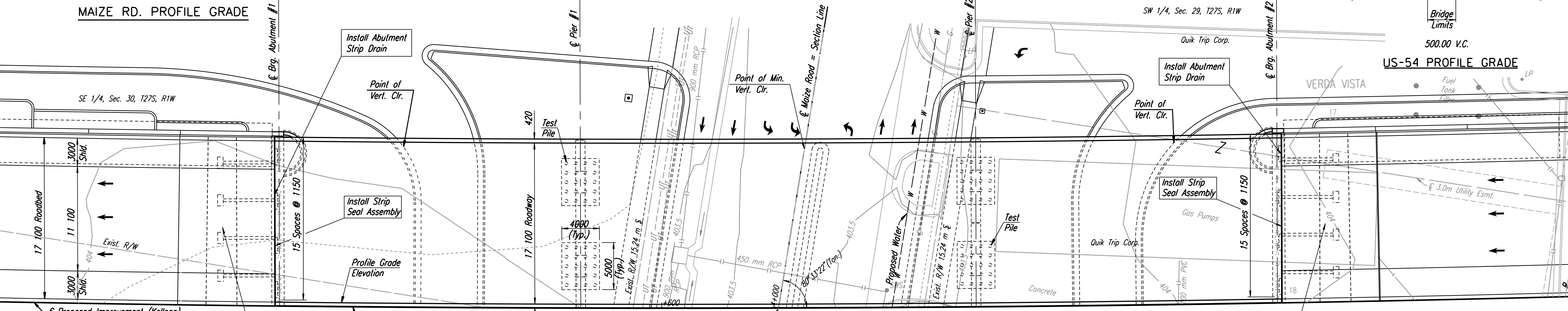
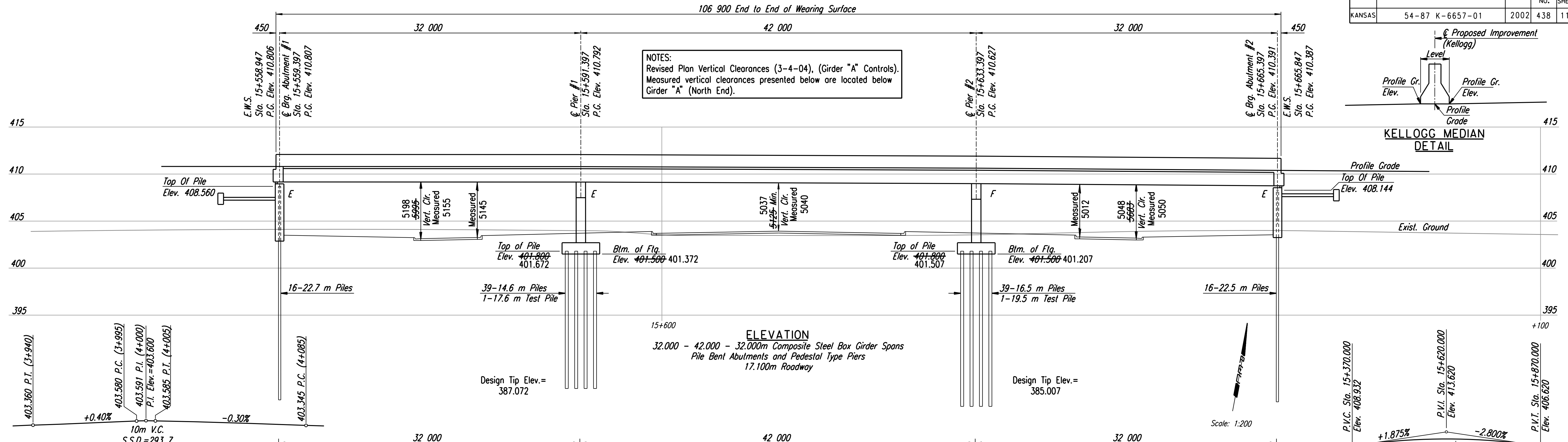
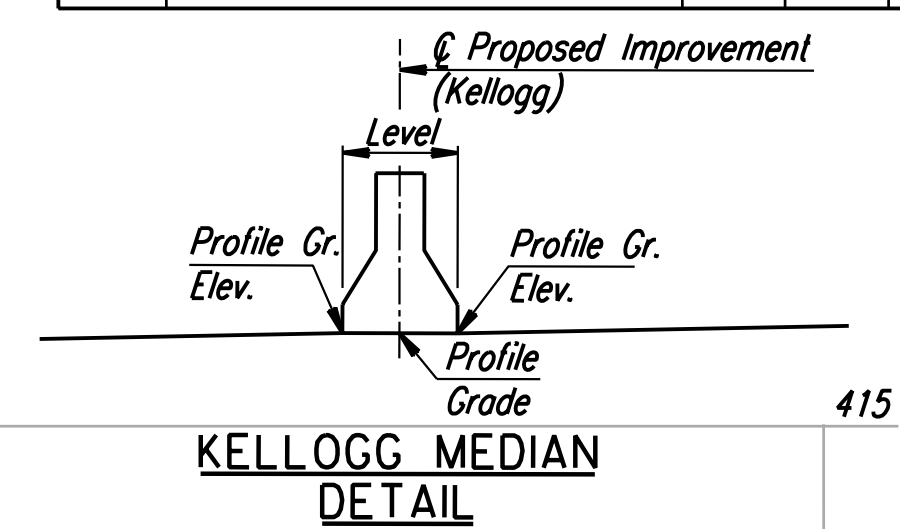


STATE	PROJECT NO.	YEAR	SHEET NO.	TOTAL SHEETS
KANSAS	54-87 K-6657-01	2002	438	1122

DATE	
BY	
REFERENCES NOTED	
REFERENCES CHECKED	

NOTES:  
 Revised Plan Vertical Clearances (3-4-04), (Girder "A" Controls).  
 Measured vertical clearances presented below are located below Girder "A" (North End).



Note:  
 The thermal movement at the Abutment #1 and Abutment #2 is +/- 26mm.

Revisions		By	Date
1			

CITY OF WICHITA  
 BR. NO. 54-87-19.05 (489)W.B. STA. 15+612.397  
**CONSTRUCTION LAYOUT**  
**KELLOGG (US-54)**  
**OVER MAIZE ROAD**  
 SEDGWICK COUNTY

**Professional Engineering Consultants, P.A.**  
 303 S. TOPEKA • WICHITA, KANSAS 67202  
 316-262-2691 • FAX 316-262-3003

Designed by	RAS	Checked by	RAS
Drawn by	JGP	Date	April, 2002
		Job No.	97362

**RECORD DRAWING**

**PLAN**

Drawn by: wil  
 Plotted by: drp 3-22-2002  
 1:1997:59:362/As-Bulldoz/dgn/s/Vol\_3/Sh\_438-MAZ-LAYWB.dgn Last Rev: 8-30-07 By: gar

BM #24B-RR Spike west face Power pole, E. of Maize Rd., 1st pole S of RR tracks. 106.5 m Rt. @ Sta. 15+609.3 Elev. 403.422

BM #24-C.O.W. Std. Disc SW corner signal pole base NE corner Kellogg & Maize Rd. 13.7 m Rt. @ Sta. 15+624.6 Elev. 403.361

BM #25-C.O.W. Std. Disc SW corner S. bridge over Cowskin Creek 61.7 m Rt. @ Sta. 15+962.3 Elev. 403.181