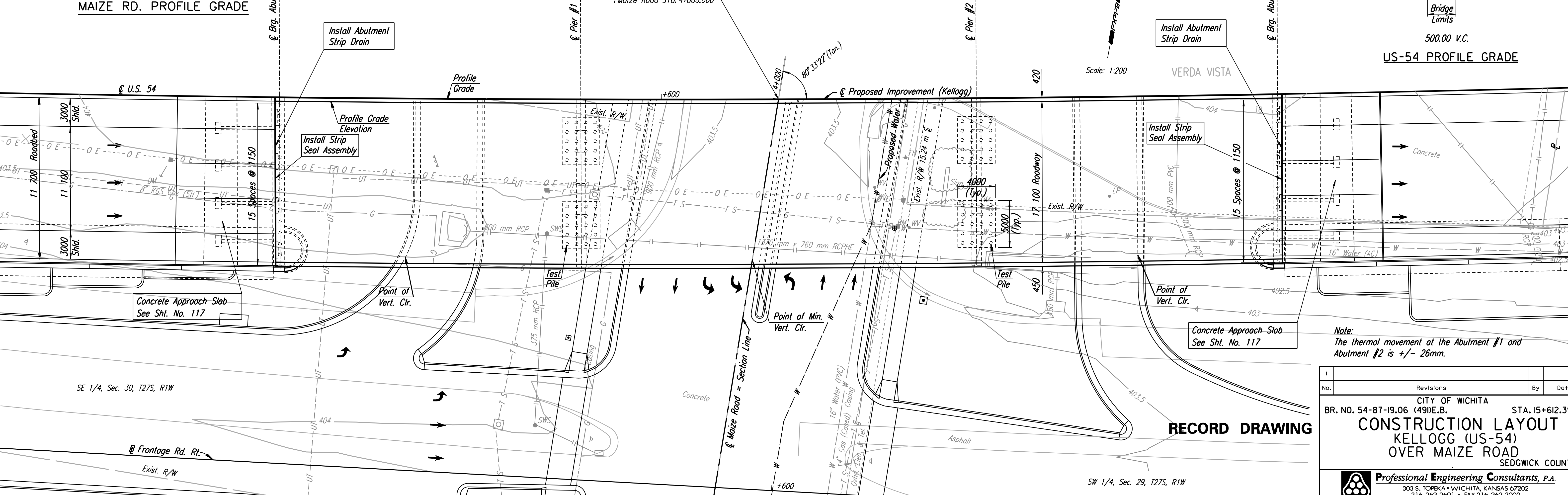
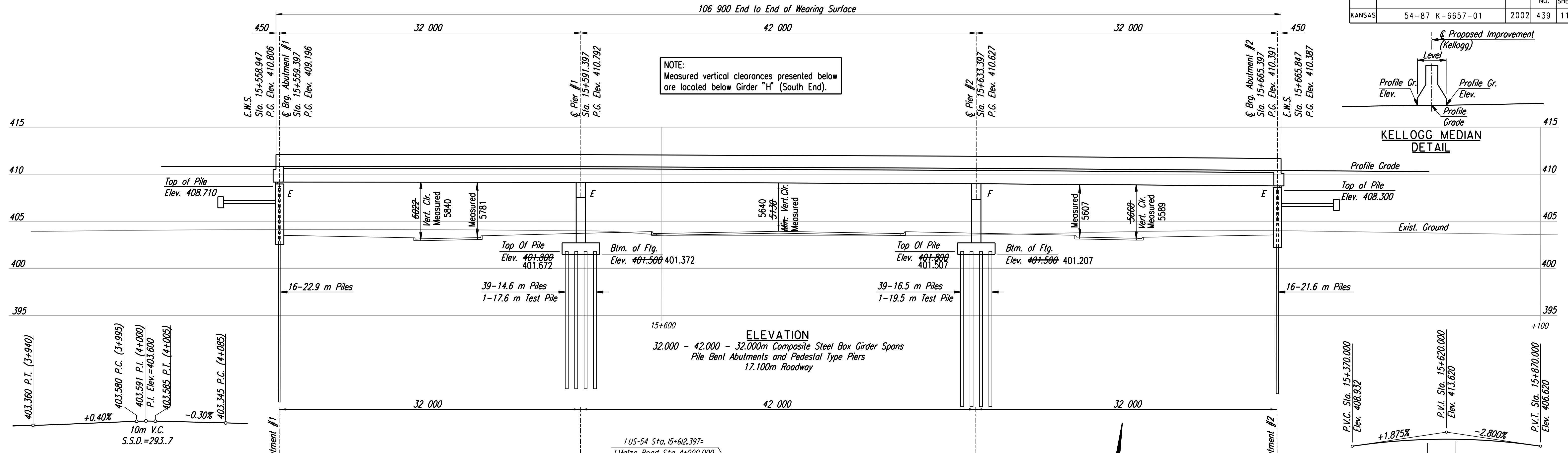
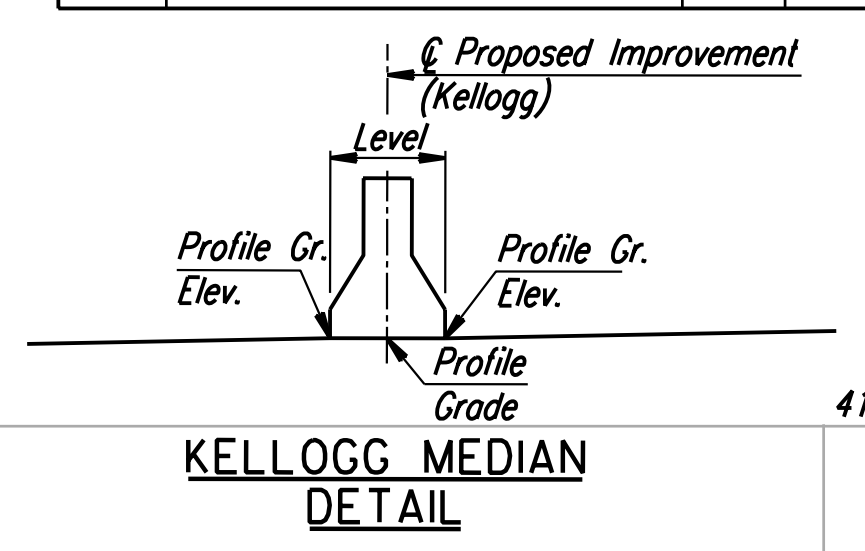


STATE	PROJECT NO.	YEAR	SHEET NO.	TOTAL SHEETS
KANSAS	54-87 K-6657-01	2002	439	1122

DATE	
BY	
REFERENCES NOTED	
REFERENCES CHECKED	

NOTE:
Measured vertical clearances presented below are located below Girder "H" (South End).



Note:
The thermal movement at the Abutment #1 and Abutment #2 is +/- 26mm.

Revisions		By	Date
CITY OF WICHITA BR. NO. 54-87-19.06 (49)E.B. STA. 15+612.397			
CONSTRUCTION LAYOUT			
KELLOGG (US-54)			
OVER MAIZE ROAD			
SEDCWICK COUNTY			
Professional Engineering Consultants, P.A.			
303 S. TOPEKA • WICHITA, KANSAS 67202 316-262-2691 • FAX 316-262-3003			
Designed by	RAS	Checked by	RAS
Drawn by	JGP	Date	Apr 11, 2002
		Job No.	97362

Drawn by: wil
 Plotted by: drp
 3-21-2002
 1:1997:59:362/As-Built/dgn/s/Vol_3/Sh_439-MAZLAYE.dgn
 Last Rev: 8-30-07 By: gdr

BM #24B-RR Spike west face Power pole, E. of Maize Rd., 1st pole S of RR tracks. 106.5 m Rt. @ Sta. 15+609.3 Elev. 403.422
 BM #24-C.O.W. Std. Disc SW corner signal pole base NE corner Kellogg & Maize Rd. 13.7 m Rt. @ Sta. 15+624.6 Elev. 403.561
 BM #25-C.O.W. Std. Disc SW corner S. bridge over Cowskin Creek 61.7 m Rt. @ Sta. 15+962.3 Elev. 403.181