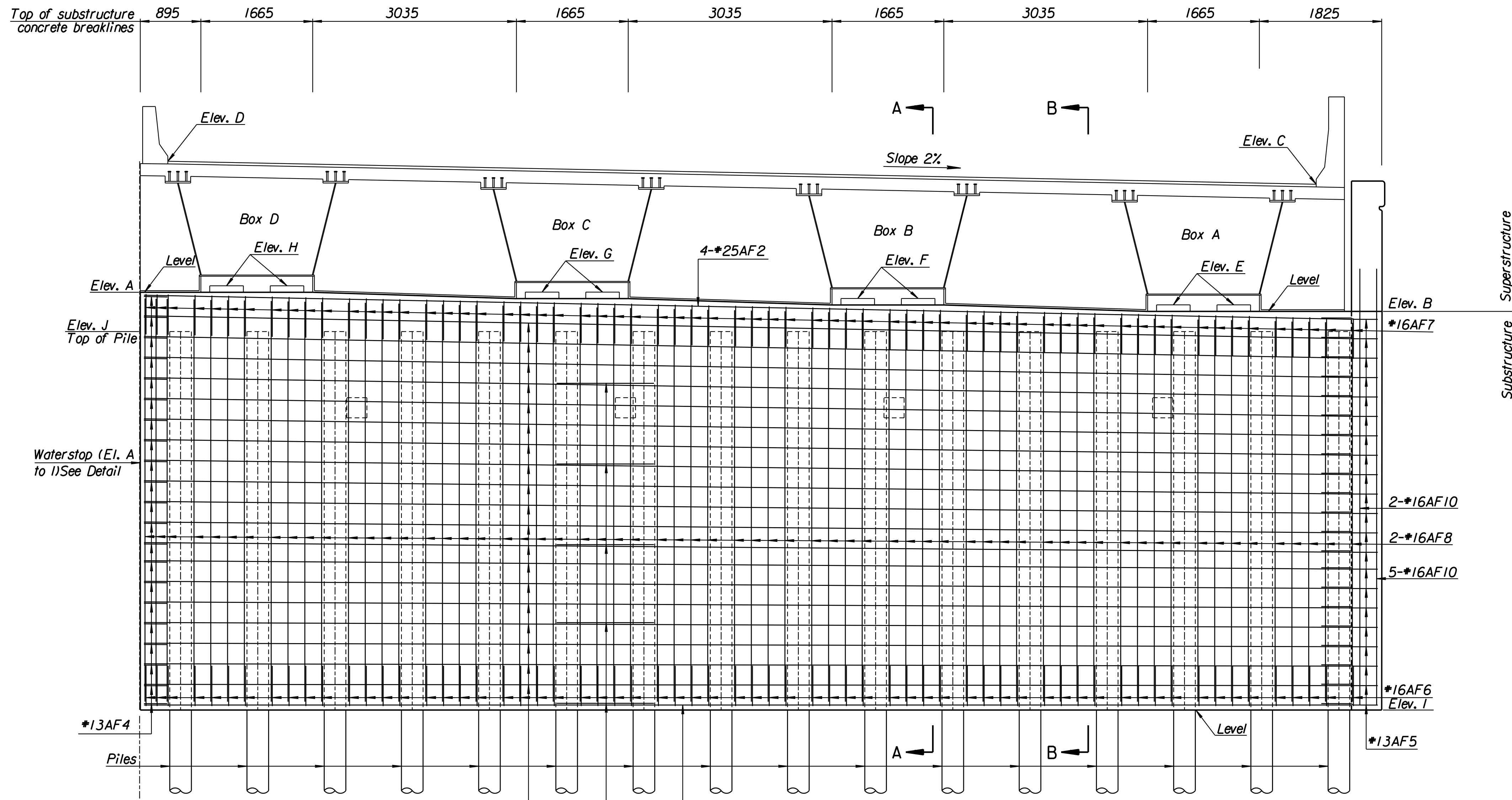
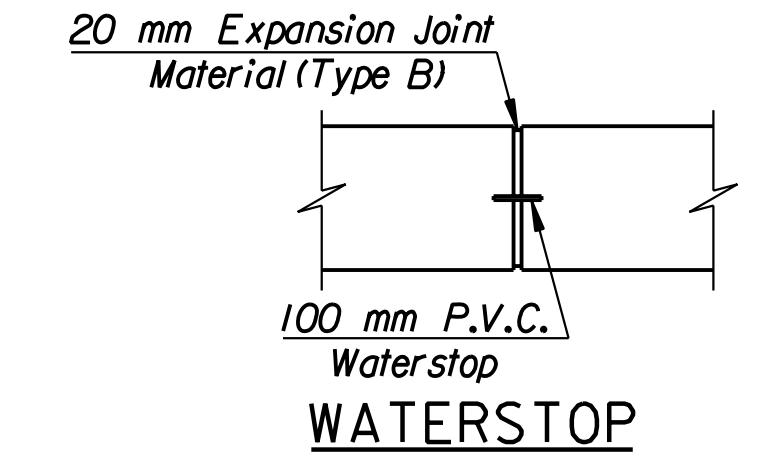


STATE	PROJECT NO.	YEAR	SHEET NO.	TOTAL SHEETS
KANSAS	54-87 K-6657-01	2002	442	1122



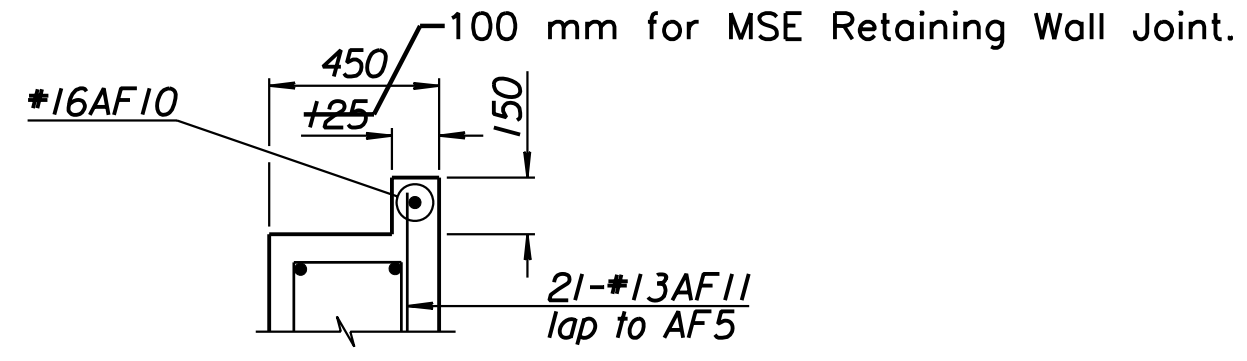
ELEVATION

Abutment No. 1 shown looking backstation
Abutment No. 2 similar mirrored about & Brg.



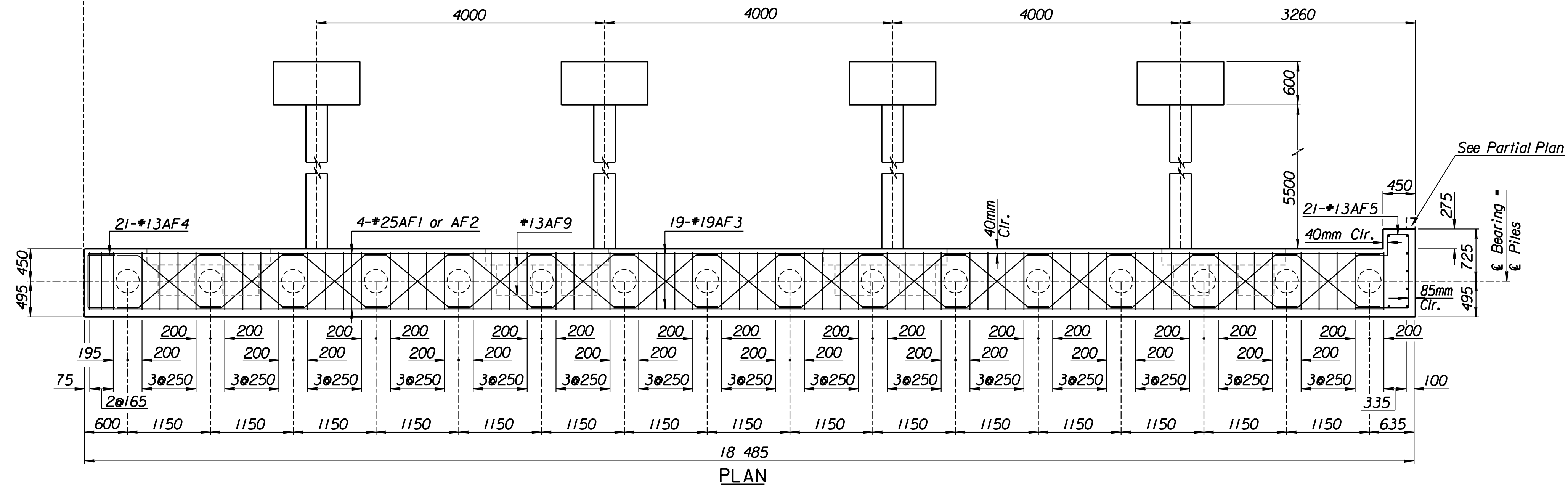
WATERSTOP

LEGEND:
N.F. = Near Face
F.F. = Far Face
E.F. = Each Face



PARTIAL PLAN

This detail complies with the Alt. No. 2.
NOTE: For Alt. No. 1 detail see plan this sheet.
Additional reinforcing required for Alt. No. 2 bid is 1-#16AF10 and 21-#13AF11. Additional concrete and reinforcing are considered subsidiary.



PLAN

TABLE OF ELEVATIONS

	Abut. #1	Abut. #2	
Location	Elevation	Elevation	
Elev. A	408.854	408.438	
Elev. B	408.571	408.155	
Elev. C	410.464	410.048	
Elev. D	410.807	410.391	
408.653 Elev. E	408.668	408.252	408.237
408.748 Elev. F	408.763	408.346	408.331
408.842 Elev. G	408.857	408.441	408.426
408.936 Elev. H	408.951	408.535	408.520
Elev. I	402.636	402.220	
Elev. J	408.560	408.144	

Abutment Pile Loadings (kN)

Group I Loading	Actual	Allowable
	415	440

No.	Revisions	By	Date
CITY OF WICHITA			
BR. NO. 54-87-19.05(489) W.B.		STA. 15+612.397	
KELLOGG OVER MAIZE ROAD ABUTMENT DETAILS			
SEDGWICK COUNTY			
Professional Engineering Consultants, P.A. 303 S. TOPEKA • WICHITA, KANSAS 67202 316-262-2691 • FAX 316-262-3003			
Designed by	RAS	Checked by	RAS
Drawn by	RAS	Date	April, 2002
		Job No.	97362

RECORD DRAWING

Drawn By: ras
 I:/1997/97362/As-Builts/dgn's/Vol_3/Sh 442-ABMTWB.dgn Last Rev: 8-30-07 By: gdr