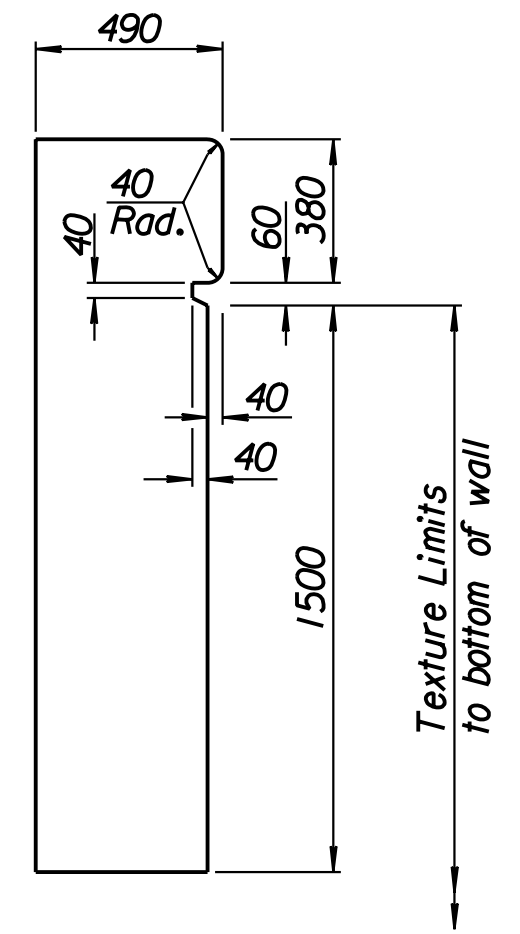
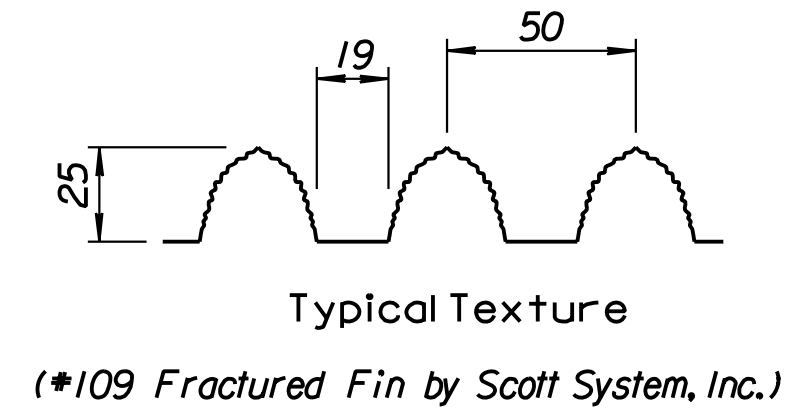
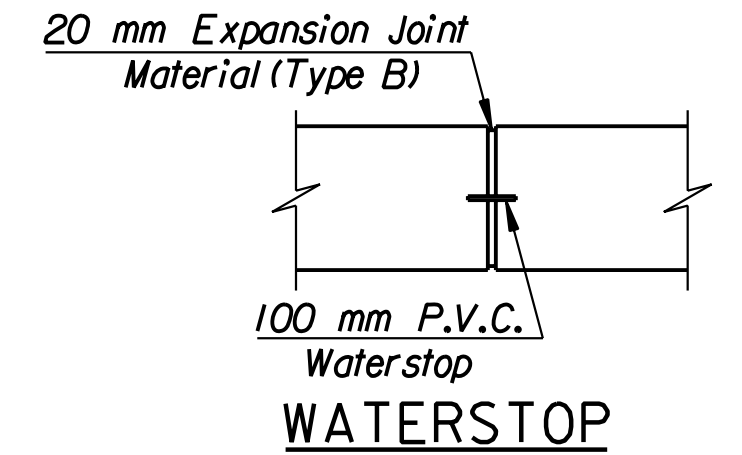


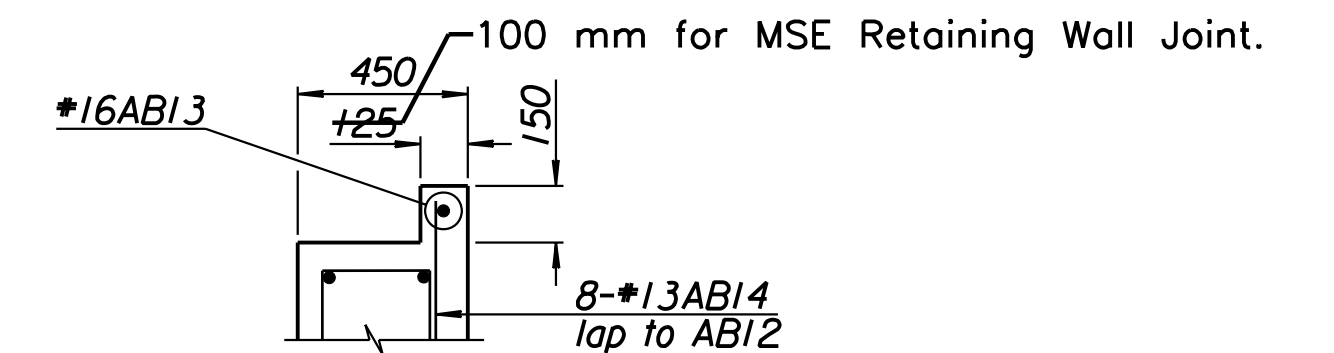
STATE	PROJECT NO.	YEAR	SHEET NO.	TOTAL SHEETS
KANSAS	54-87 K-6657-01	2002	443	1122



SUPERSTRUCTURE DETAIL A

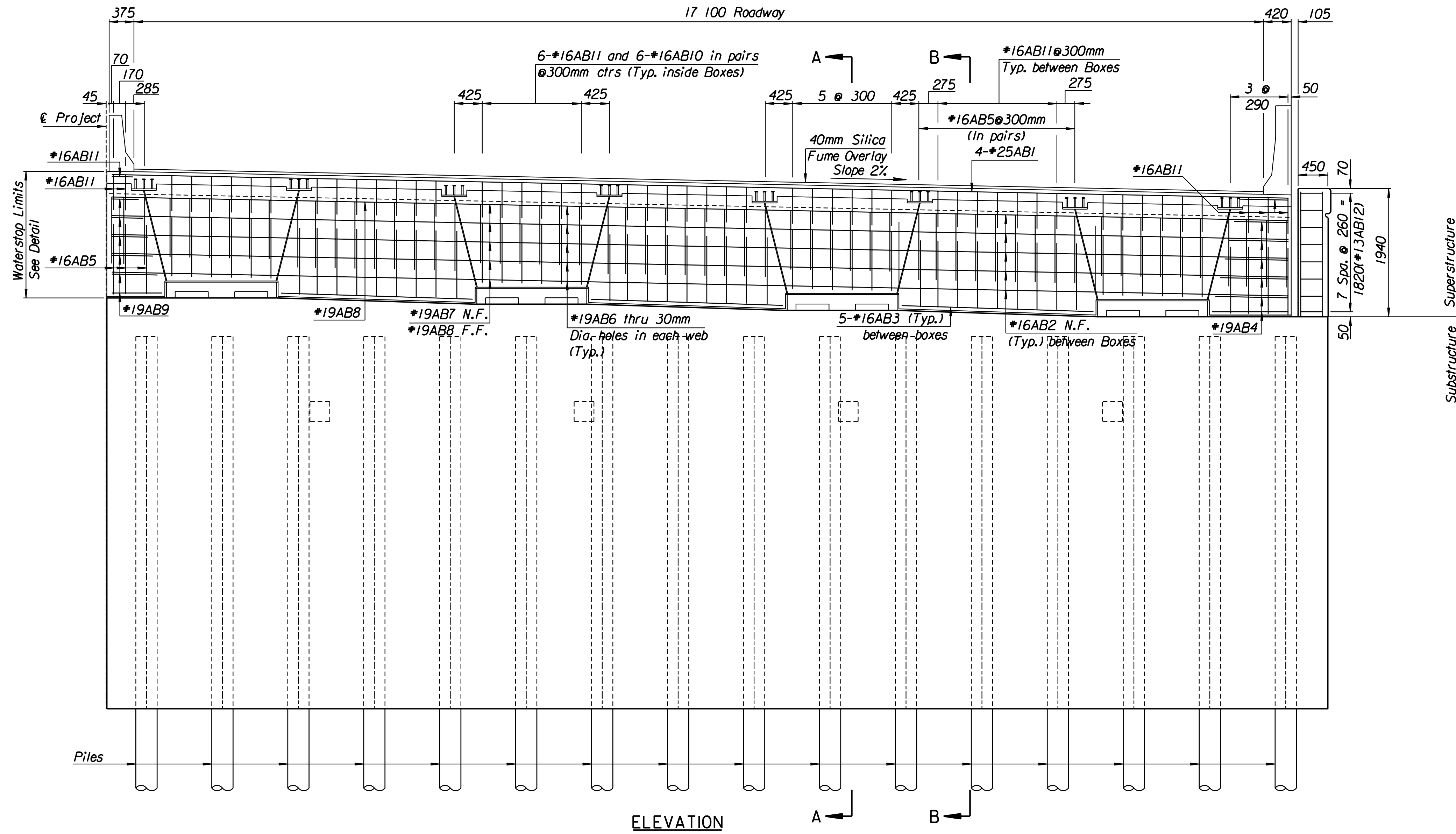


LEGEND:  
 N.F. = Near Face  
 F.F. = Far Face  
 E.F. = Each Face

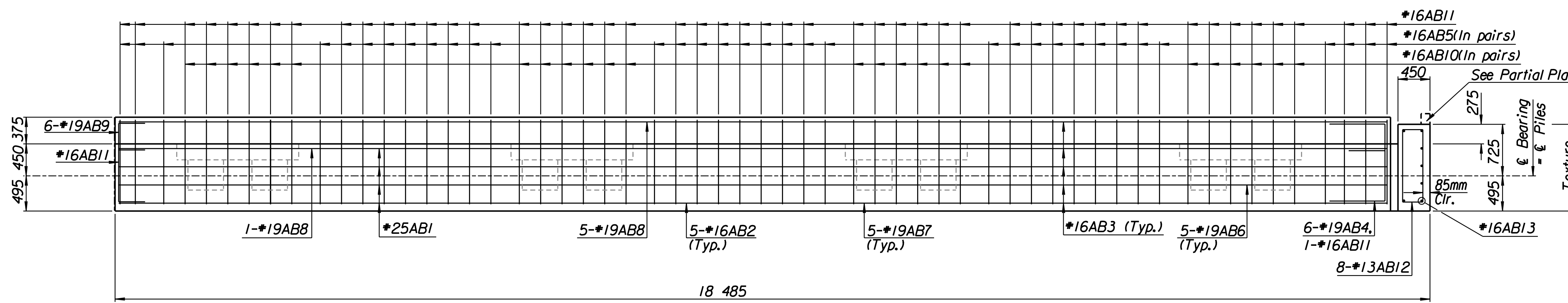


PARTIAL PLAN

This detail complies with the Alt. No. 2.  
 NOTE: For Alt. No. 1 detail see plan this sheet.  
 Additional reinforcing required for Alt. No. 2 bid is 1-#16AB13 and 8-#13AB14. Additional concrete and reinforcing are considered subsidiary.



Abutment No. 1 shown looking backstation  
 Abutment No. 2 similar mirrored about & Brg.



PLAN

RECORD DRAWING

No.	Revisions	By	Date
CITY OF WICHITA			
BR. NO. 54-87-19.05(489) W.B.		STA. 15+612.397	
<b>KELLOGG OVER MAIZE ROAD ABUTMENT DETAILS</b>			
SEDGWICK COUNTY			
<b>Professional Engineering Consultants, P.A.</b>			
303 S. TOPEKA • WICHITA, KANSAS 67202 316-262-2691 • FAX 316-262-3003			
Designed by	RAS	Checked by	RAS
Drawn by	RAS	Date	April, 2002
		Job No.	97362

Drawn By: ros  
 I:/1997/97362/As-Builts/dgn's/Vol\_3/Sh 443-ABMTWB.dgn Last Rev: 8-30-07 By: gdr