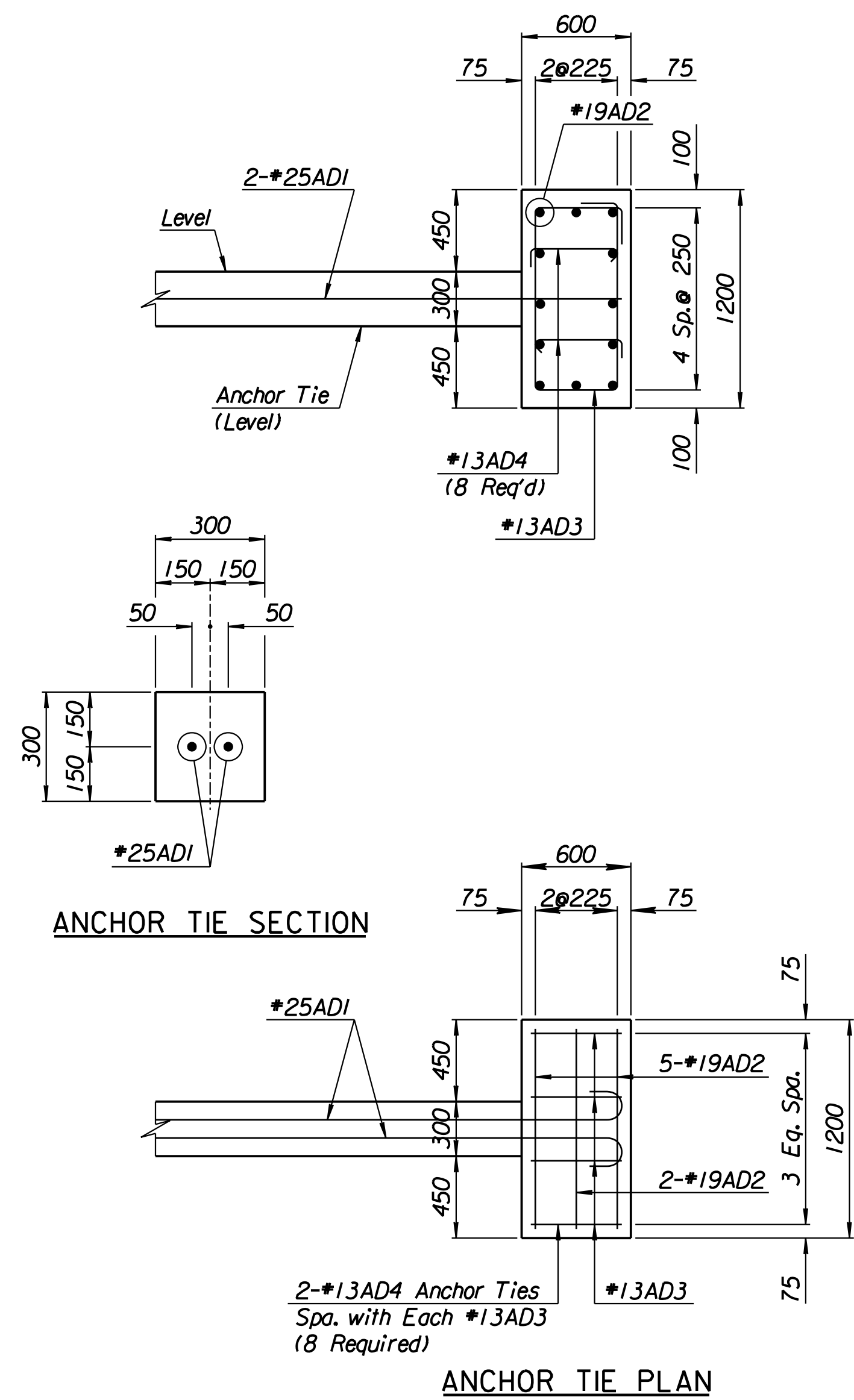
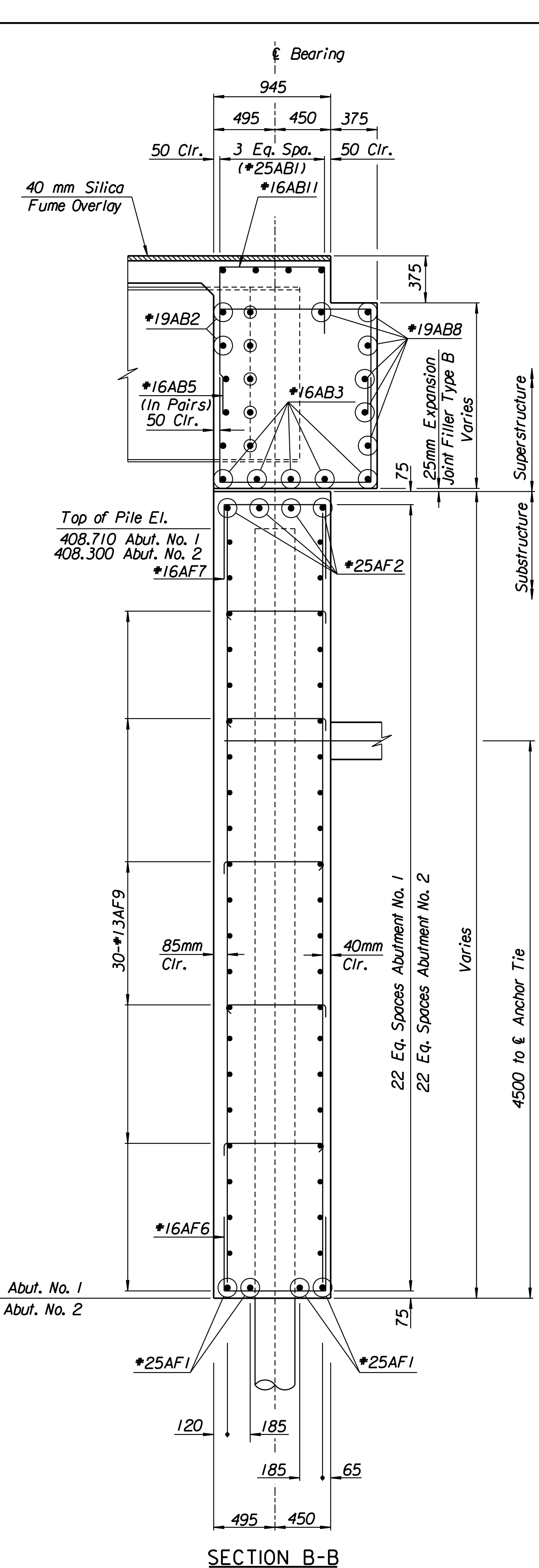
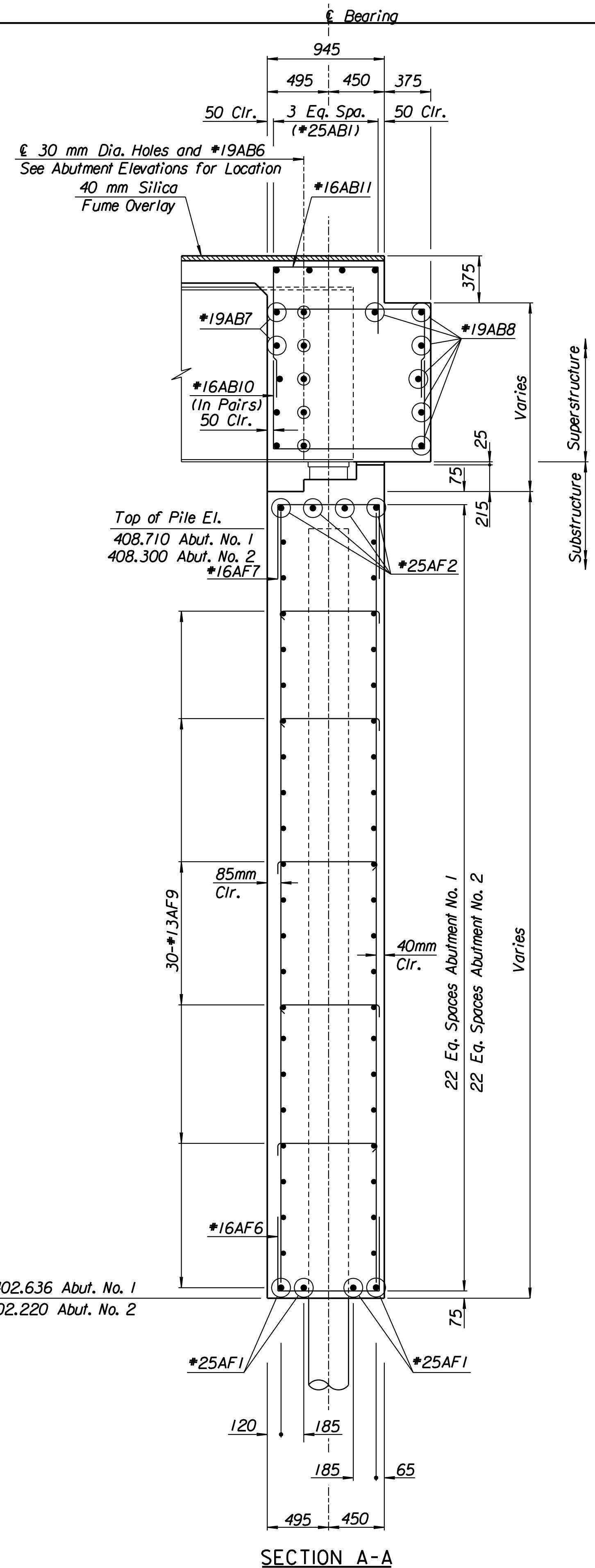


STATE	PROJECT NO.	YEAR	SHEET NO.	TOTAL SHEETS
KANSAS	54-87 K-6657-01	2002	447	1122



RECORD DRAWING

Drawn By: ros  
 I:/1997/97362/As-Builts/dgn's/Vol\_3/Sh 447-abmteb.dgn Last Rev: 8-30-07 By: gdr

No.	Revisions	By	Date

CITY OF WICHITA  
BR. NO. 54-87-19.06(491) E.B. STA. 15+612.397

KELLOGG OVER MAIZE ROAD  
ABUTMENT SECTIONS

SEDGWICK COUNTY

Professional Engineering Consultants, P.A.  
303 S. TOPEKA - WICHITA, KANSAS 67202  
316-262-2691 • FAX 316-262-3003

Designed by	RAS	Checked by	RAS
Drawn by	RAS	Date	April, 2002
		Job No.	97362