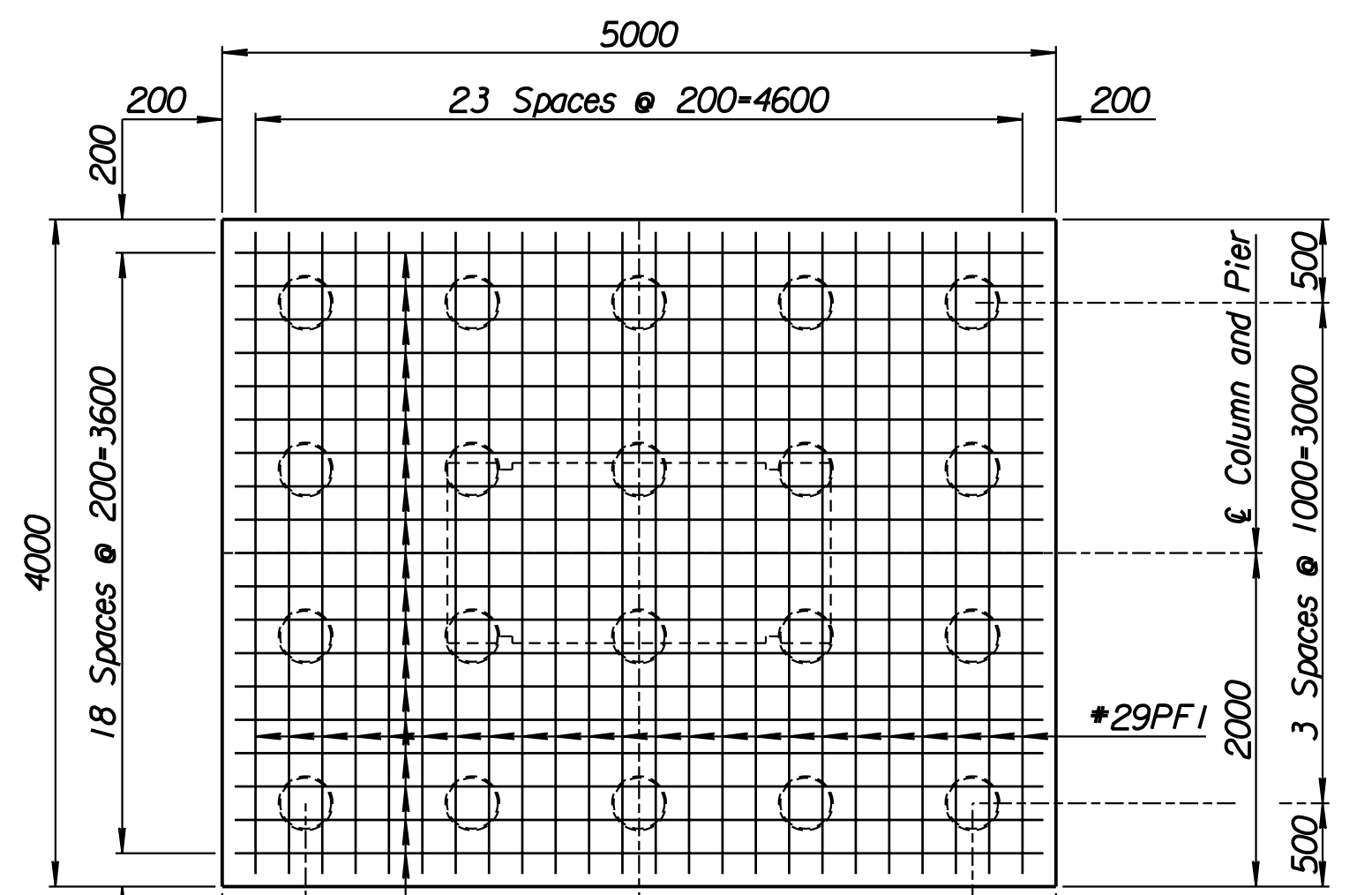
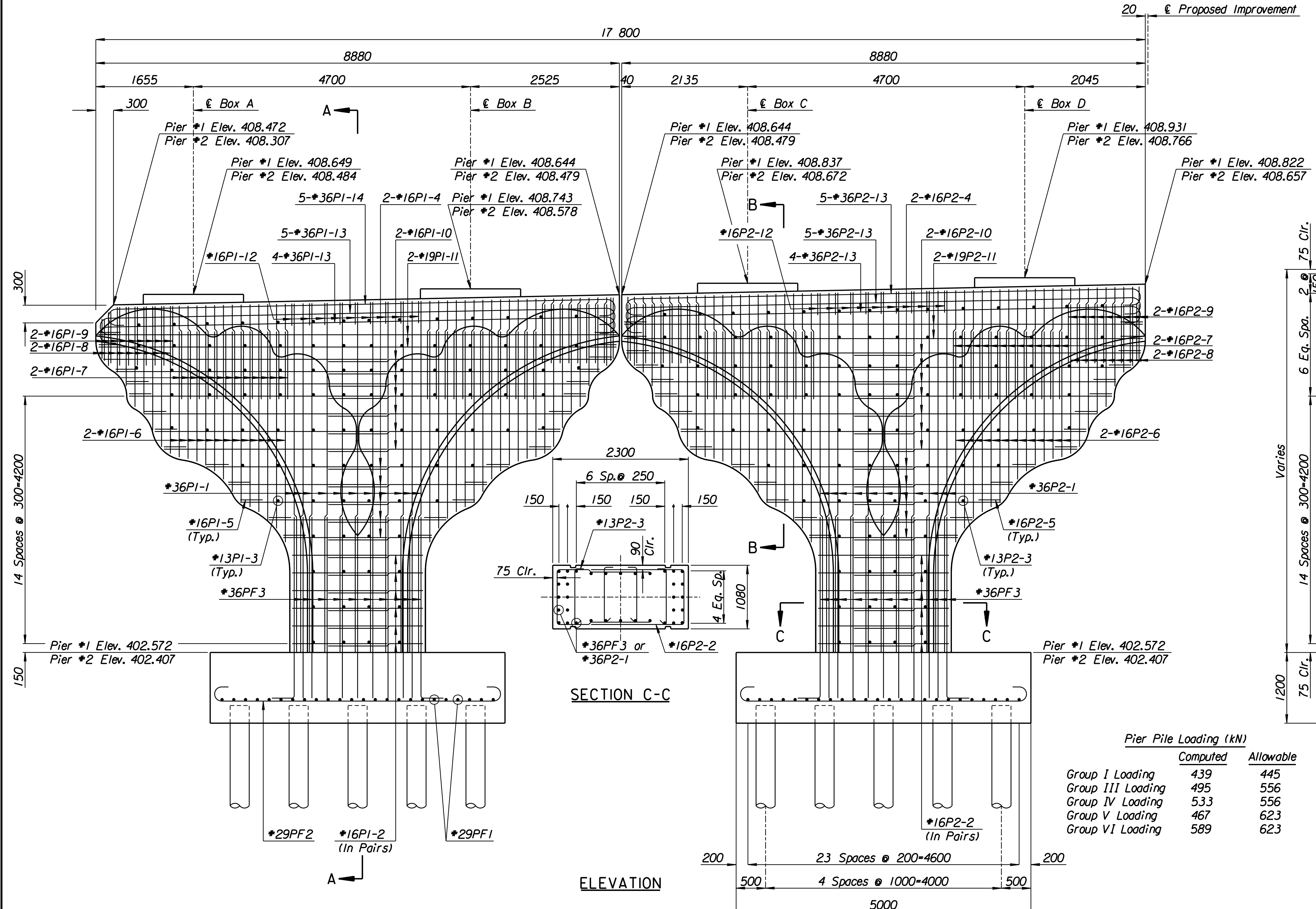


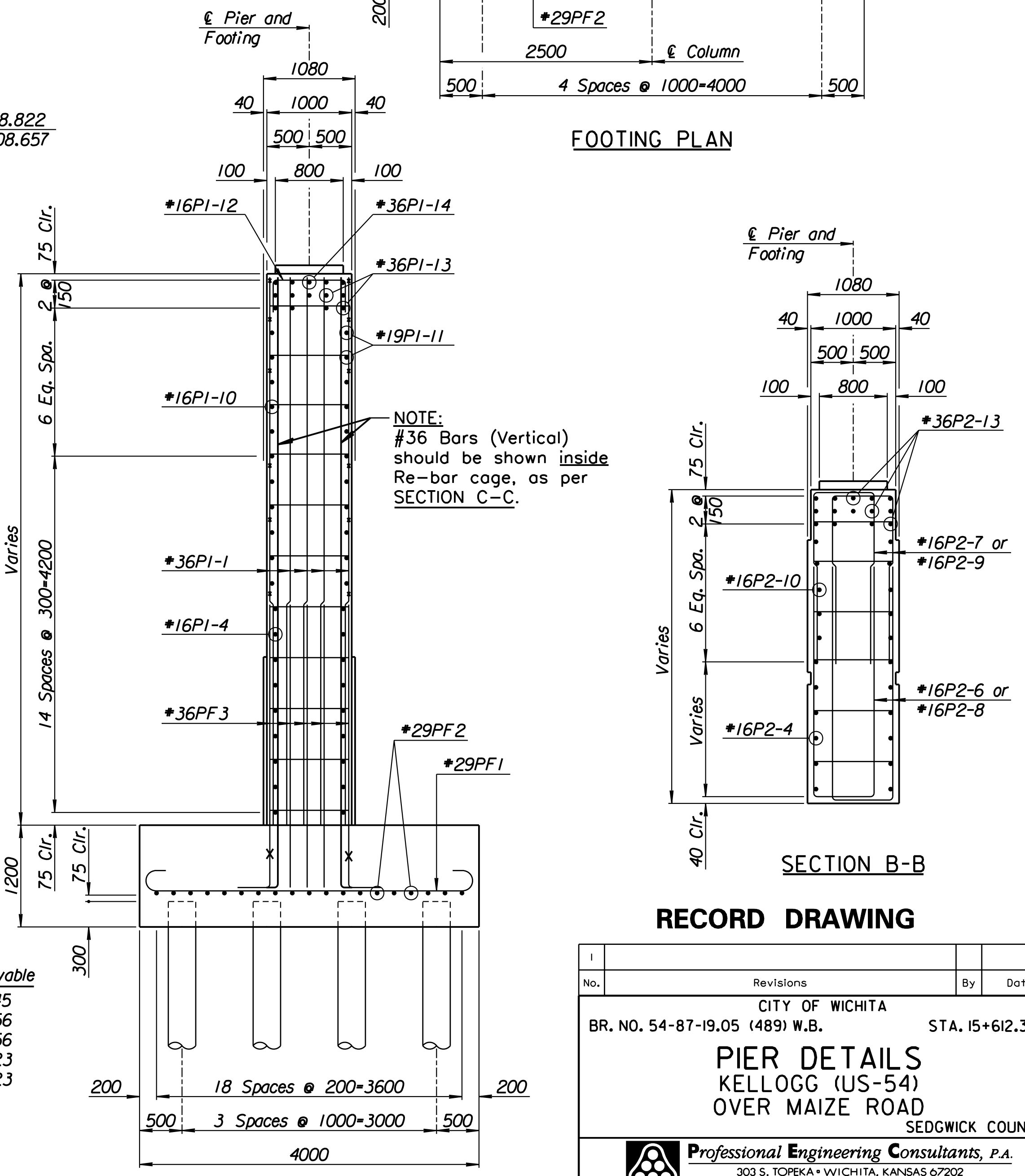
PLAN



FOOTING PLAN



ELEVATION



SECTION A-A

SECTION B-B

Pier Pile Loading (kN)

	Computed	Allowable
Group I Loading	439	445
Group III Loading	495	556
Group IV Loading	533	556
Group V Loading	467	623
Group VI Loading	589	623

NOTE:
#36 Bars (Vertical)
should be shown inside
Re-bar cage, as per
SECTION C-C.

RECORD DRAWING

1			
No.	Revisions	By	Date
CITY OF WICHITA			
BR. NO. 54-87-19.05 (489) W.B.		STA. 15+612.397	
PIER DETAILS			
KELLOGG (US-54)			
OVER MAIZE ROAD			
SEDGWICK COUNTY			
Professional Engineering Consultants, P.A.			
303 S. TOPEKA • WICHITA, KANSAS 67202			
316-262-2691 • FAX 316-262-3003			
Designed by	P.D.F.	Checked by	R.A.S.
Drawn by	W.L.L.	Date	April 11, 2002
		Job No.	97362

Drawn by: will
 Scale: 40
 I:/1997/97362/As-Built/dgn/s/Vol_3/Sh_454-pier.dgn Last Rev: 8-30-07 By: gdr