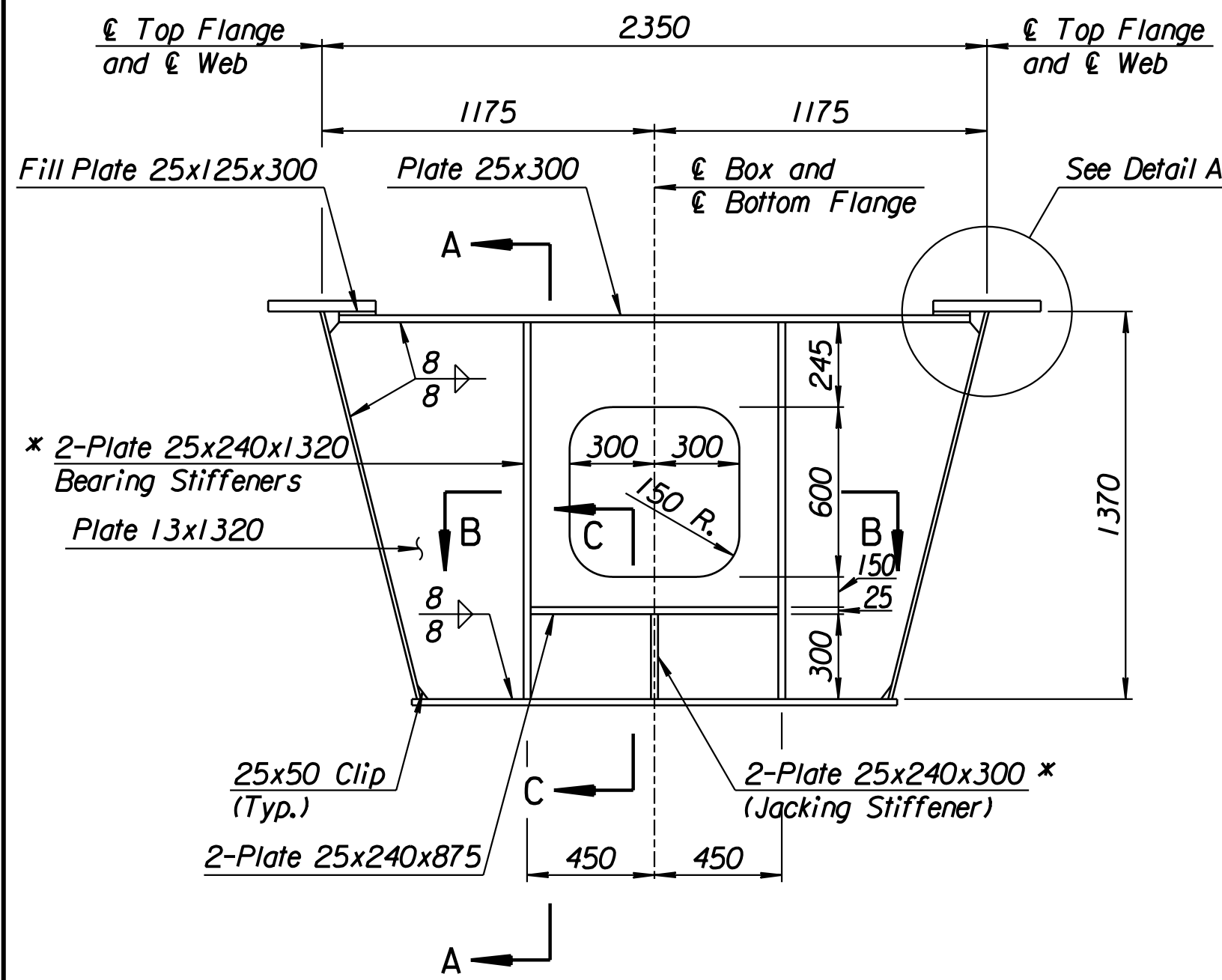
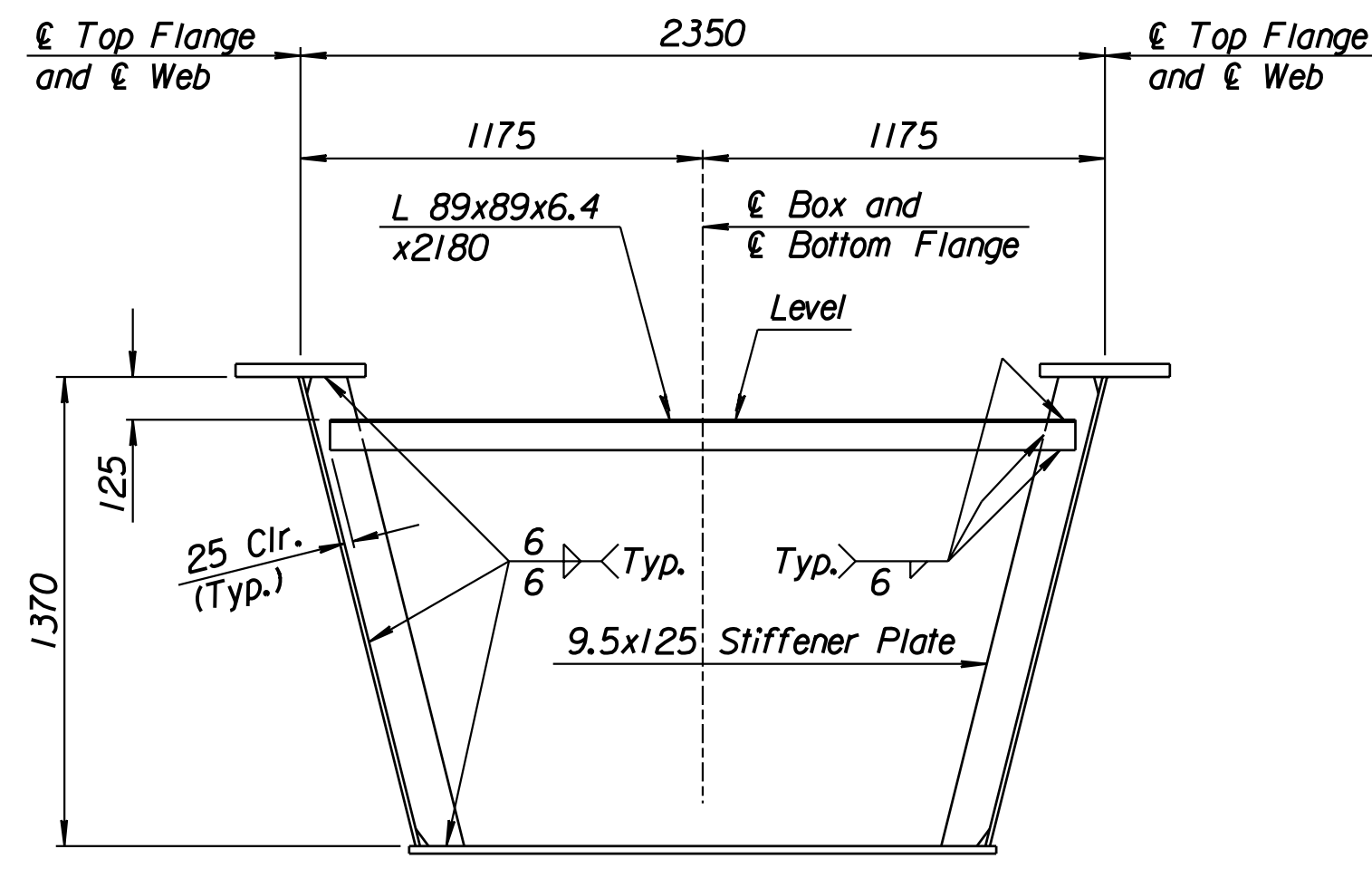


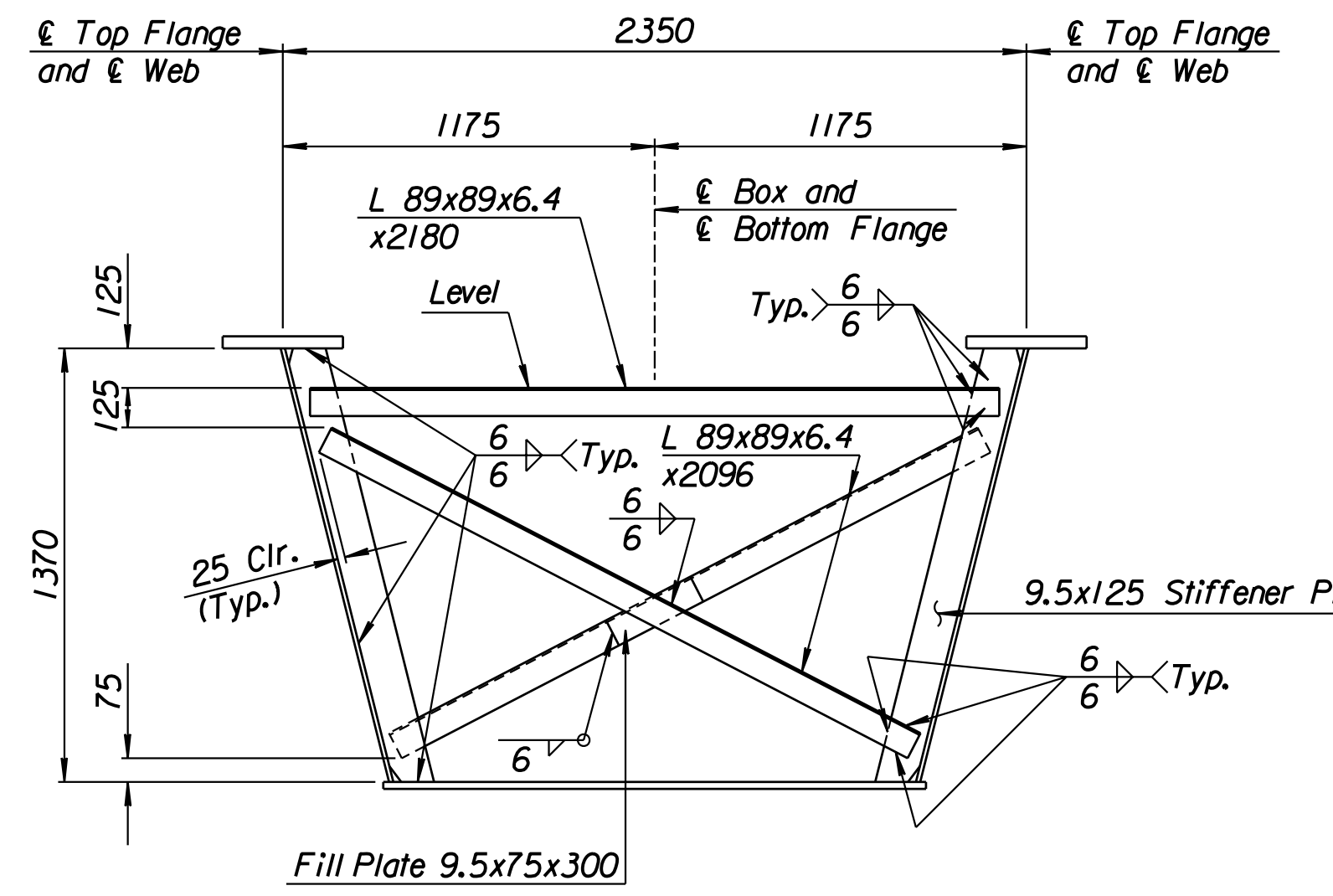
STATE	PROJECT NO.	YEAR	SHEET NO.	TOTAL SHEETS
KANSAS	54-87 K-6657-01	2002	460	1122



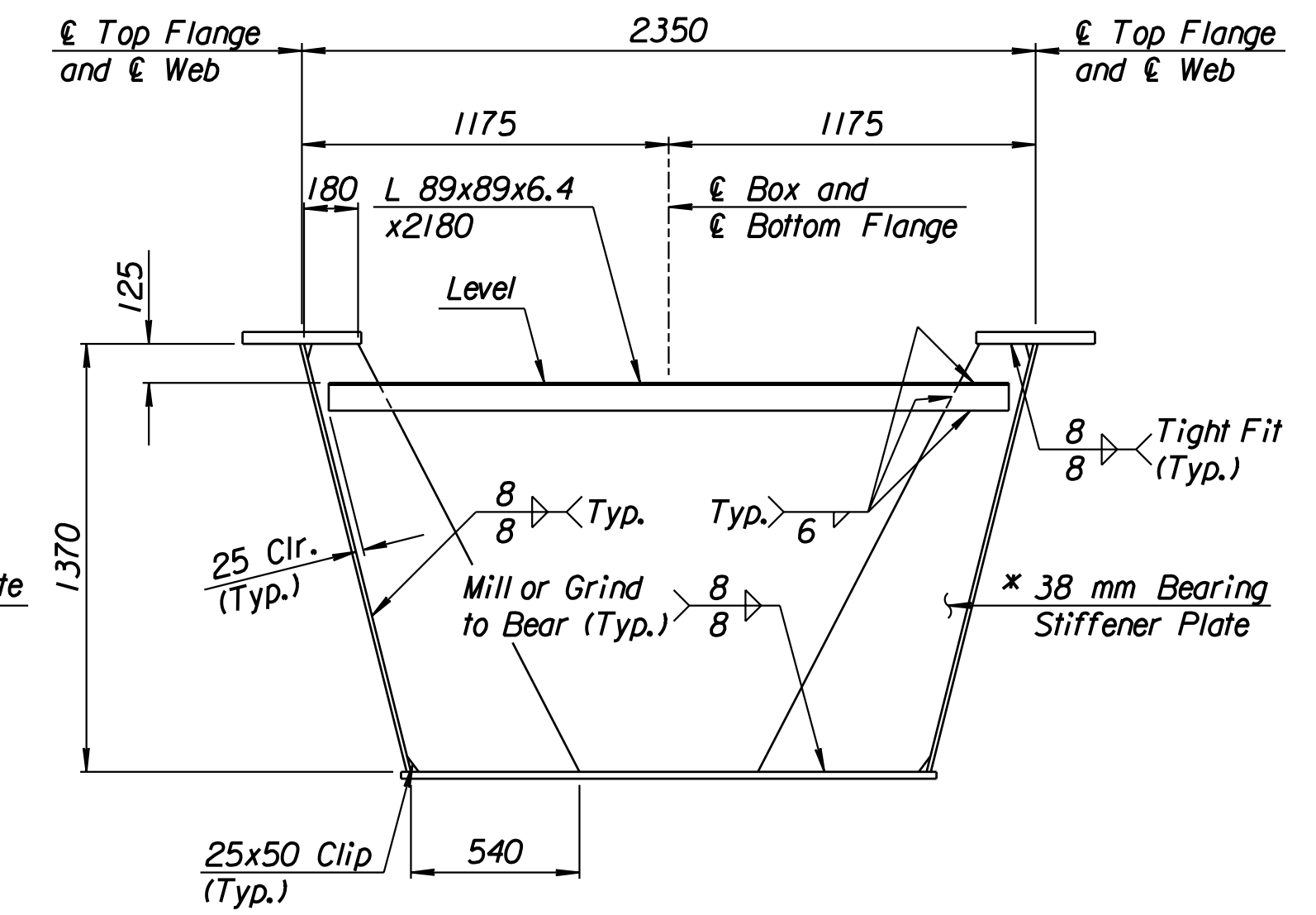
PIER DIAPHRAGM
(8 Required per Bridge)



TYPE D-2 DIAPHRAGM
(52 Required per Bridge)

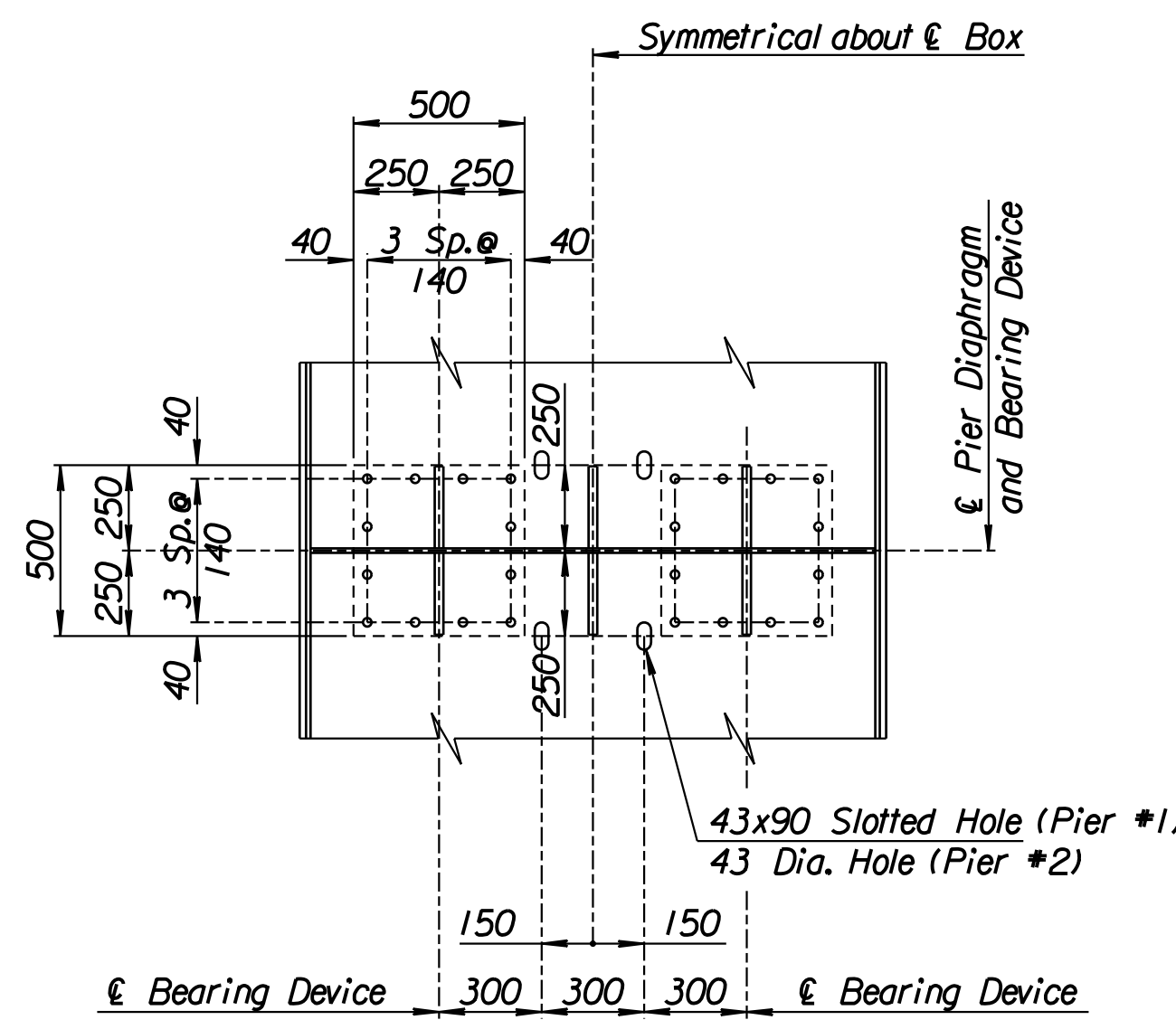


TYPE D-1 DIAPHRAGM
(80 Required per Bridge)

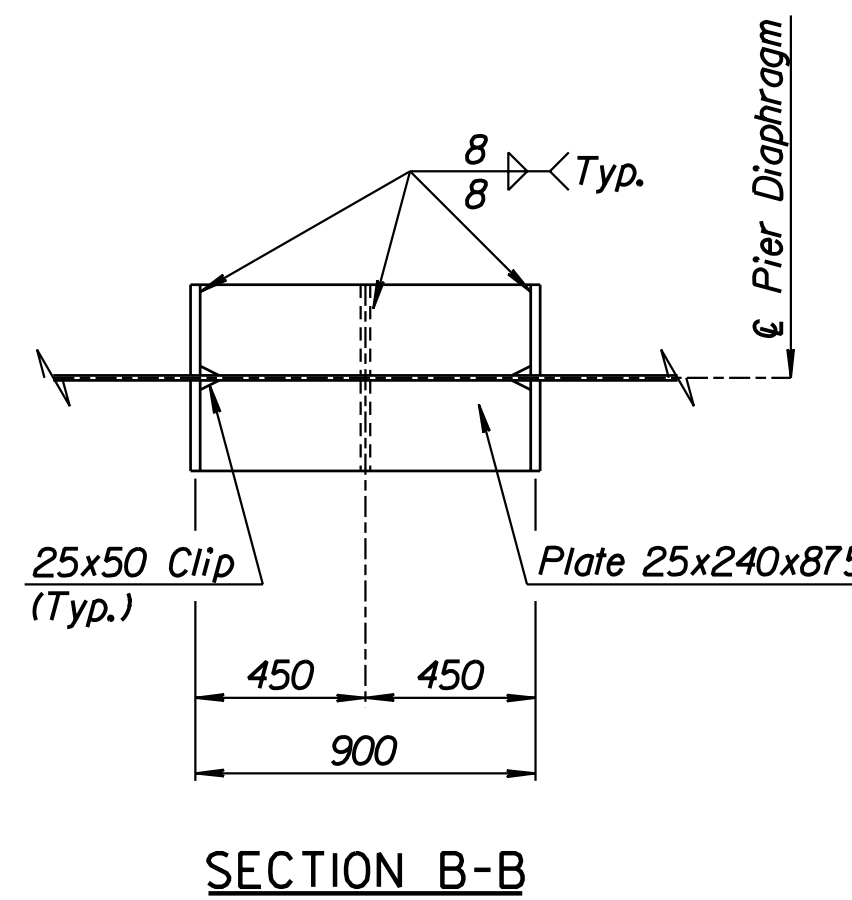


ABUTMENT DIAPHRAGM
(8 Required per Bridge)

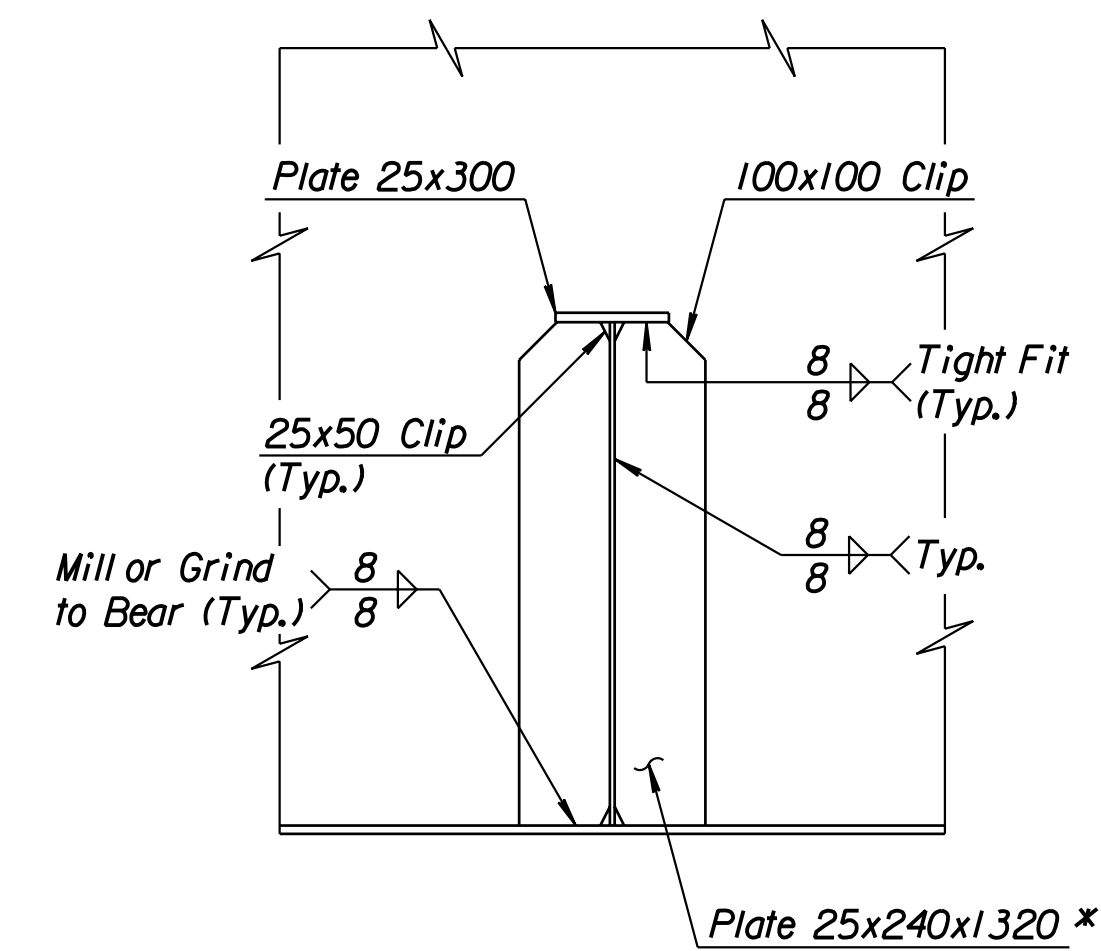
* M270M Grade 345 T2



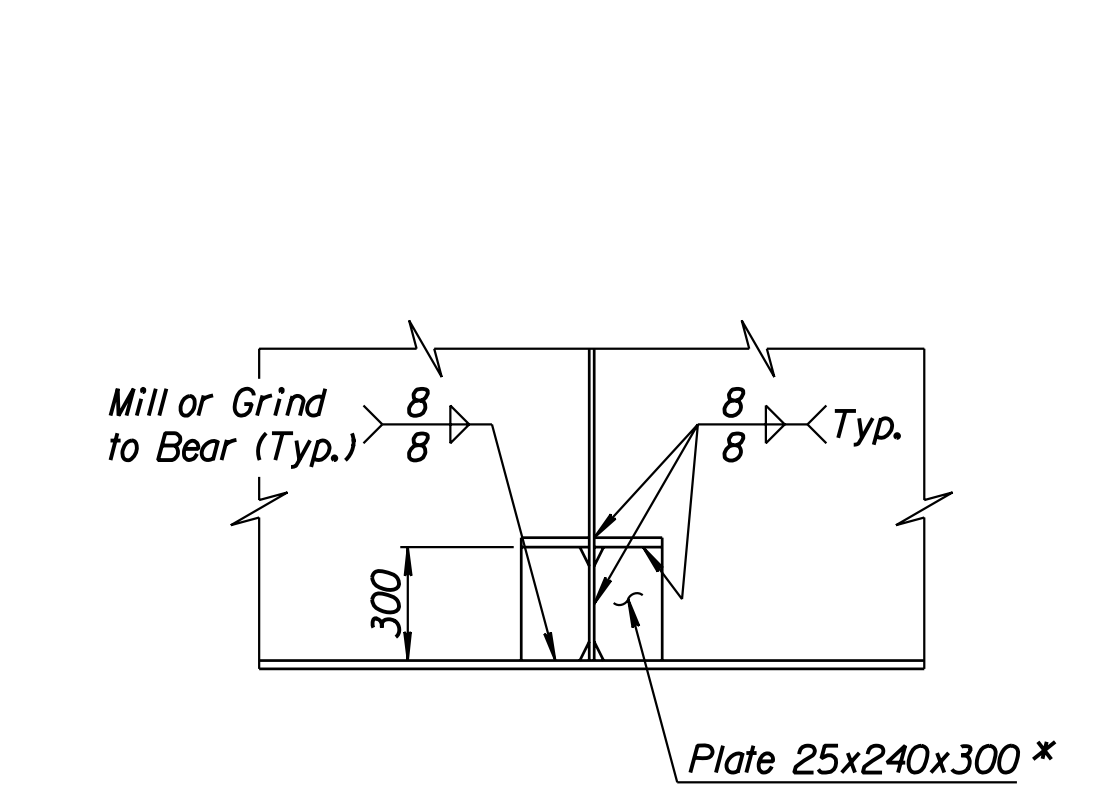
PLAN AT PIER BEARING



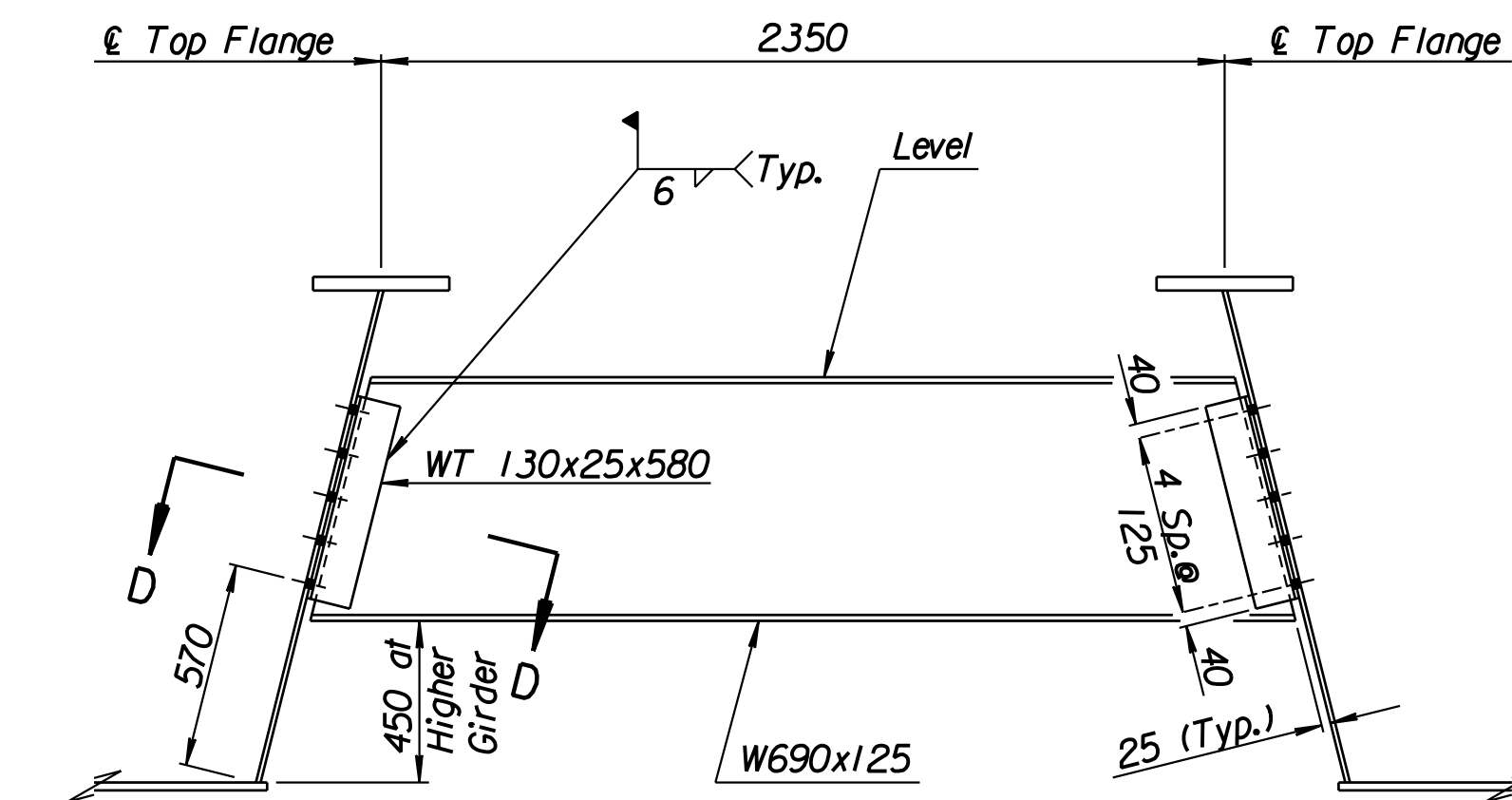
SECTION B-B



SECTION A-A

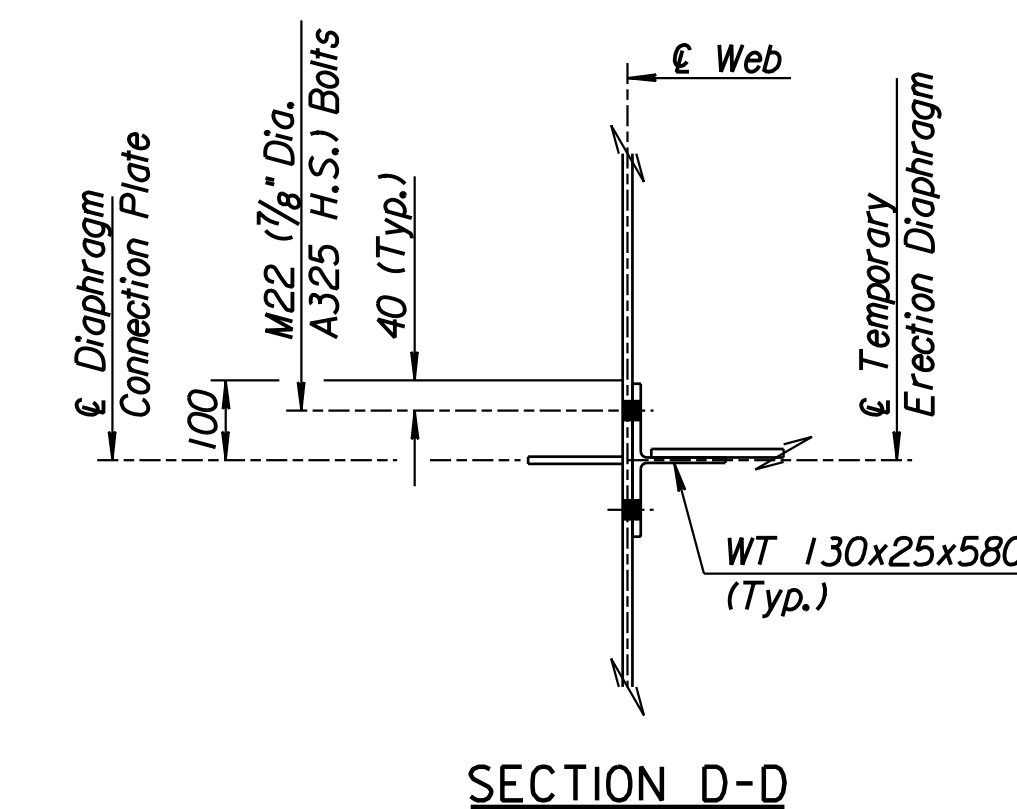


SECTION C-C

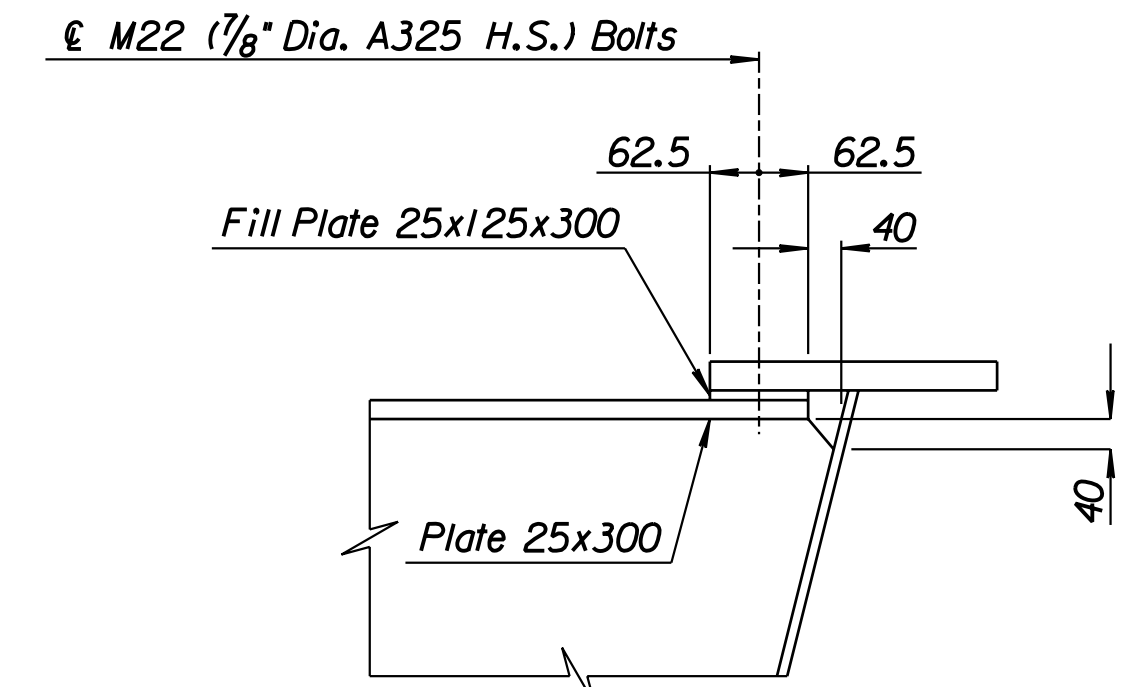


TEMPORARY ERECTION DIAPHRAGM
(51 Required per Bridge)

Note:
The Temporary Erection Diaphragms shall be in place during placement and curing of the deck, after which they shall be removed with the exception of the M22 (7/8" Dia. A325 H.S.) Bolts through the Web, which shall be reinserted in the holes and tightened.
Temporary Erection Diaphragms, WT Shapes and Bolts shall not be paid for directly, but shall be subsidiary to the bid item "Structural Steel A709M (Gr. 250)". After removal they shall become the property of the Contractor.

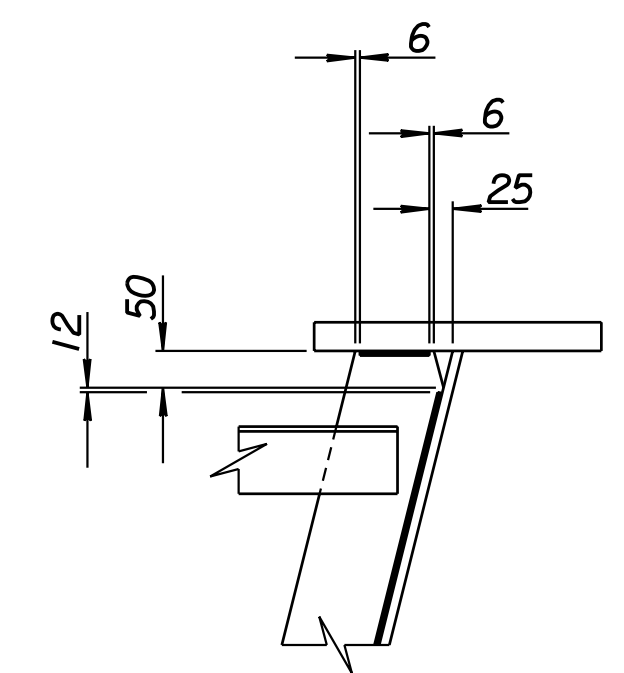


SECTION D-D



DETAIL A

Note:
Bolt Hole Spacing for the Fill Plate is shown on the Lateral Bracing Detail.



TYPICAL CLIP AND WELD DETAIL

1			
No.	Revisions	By	Date
CITY OF WICHITA			
BR. NO. 54-87-19.05 (489) W.B.		STA. 15+612.397	
BR. NO. 54-87-19.06 (491) E.B.		STA. 15+612.397	
DIAPHRAGM DETAILS			
KELLOGG (US-54) OVER MAIZE ROAD SEDGWICK COUNTY			
Professional Engineering Consultants, P.A.			
303 S. TOPEKA • WICHITA, KANSAS 67202 316-262-2691 • FAX 316-262-3003			
Designed by	P.D.F.	Checked by	R.A.S.
Drawn by	W.L.L.	Date	April 2002
		Job No.	97362

RECORD DRAWING

Drawn by: wll
 Scale: 500
 I:/1997/97362/As-Built/dgn/s/Vol_3/Sh_460-diaphragm.dgn Last Rev: 8-31-07 By: gdr