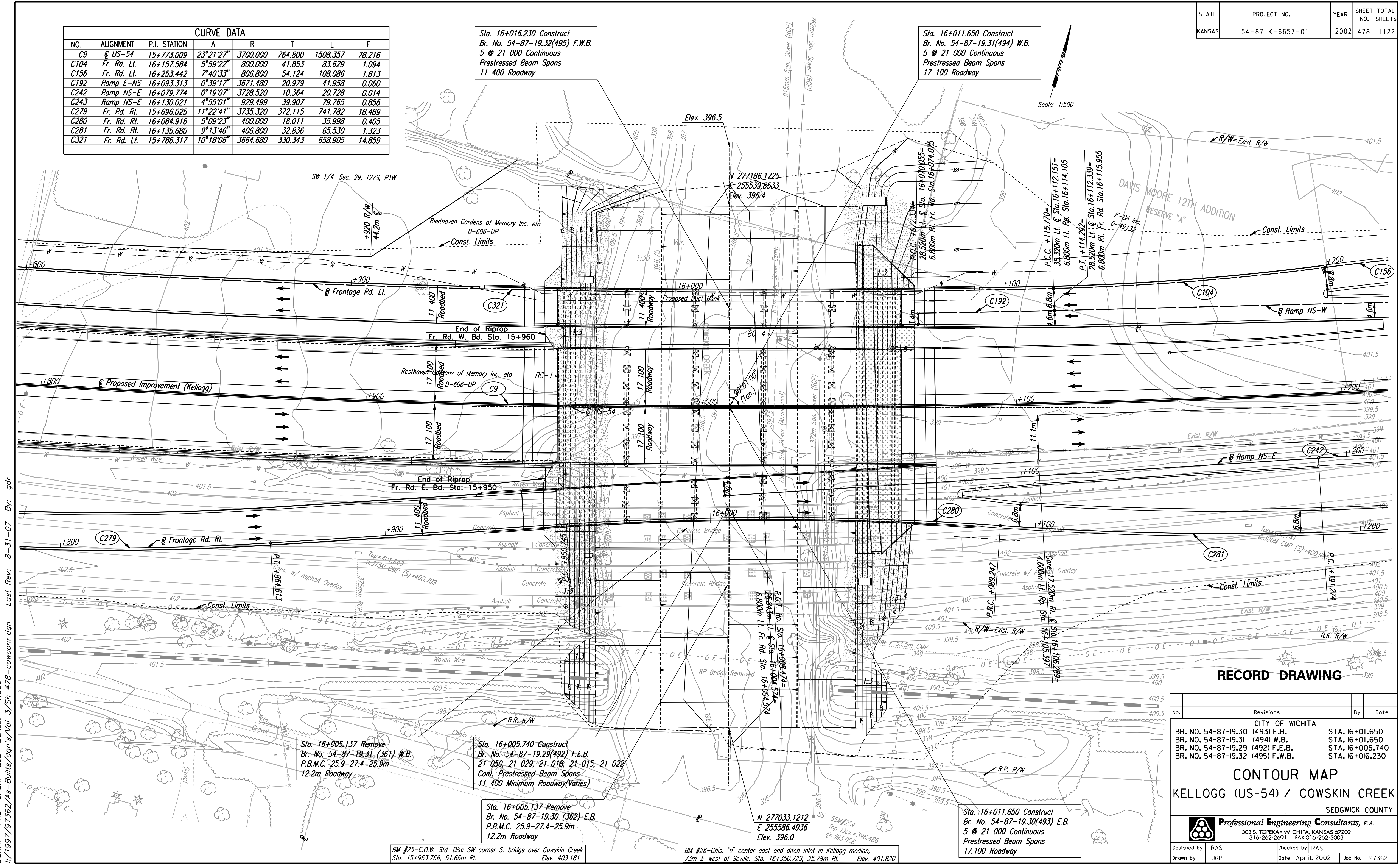


STATE	PROJECT NO.	YEAR	SHEET NO.	TOTAL SHEETS
KANSAS	54-87-K-6657-01	2002	478	1122

CURVE DATA							
NO.	ALIGNMENT	P.I. STATION	Δ	R	T	L	E
C9	US-54	15+773.009	23°21'27"	3700.000	764.800	1508.357	78.216
C104	Fr. Rd. Lt.	16+157.584	5°59'22"	800.000	41.853	83.629	1.094
C156	Fr. Rd. Lt.	16+253.442	7°40'33"	806.800	54.124	108.086	1.813
C192	Ramp E-NS	16+093.313	0°39'17"	3671.480	20.979	41.958	0.060
C242	Ramp NS-E	16+079.774	0°19'07"	3728.520	10.364	20.728	0.014
C243	Ramp NS-E	16+130.021	4°55'01"	929.499	39.907	79.765	0.856
C279	Fr. Rd. Rt.	15+696.025	11°22'41"	3735.320	372.115	741.782	18.489
C280	Fr. Rd. Rt.	16+084.916	5°09'23"	400.000	18.011	35.998	0.405
C281	Fr. Rd. Rt.	16+135.680	9°13'46"	406.800	32.836	65.530	1.323
C321	Fr. Rd. Lt.	15+786.317	10°18'06"	3664.680	330.343	658.905	14.859

Sta. 16+016.230 Construct
Br. No. 54-87-19.32(495) F.W.B.
5 @ 21 000 Continuous
Prestressed Beam Spans
11 400 Roadway

Sta. 16+011.650 Construct
Br. No. 54-87-19.31(494) W.B.
5 @ 21 000 Continuous
Prestressed Beam Spans
17 100 Roadway



Sta. 16+005.137 Remove
Br. No. 54-87-19.31 (361) W.B.
P.B.M.C. 25.9-27.4-25.9m
12.2m Roadway

Sta. 16+005.740 Construct
Br. No. 54-87-19.29(492) F.E.B.
21 050, 21 029, 21 018, 21 015, 21 022
Cont. Prestressed Beam Spans
11 400 Minimum Roadway (Varies)

Sta. 16+005.137 Remove
Br. No. 54-87-19.30 (362) E.B.
P.B.M.C. 25.9-27.4-25.9m
12.2m Roadway

BM #25-C.O.W. Sta. Disc SW corner S. bridge over Cowskin Creek
Sta. 15+963.766, 61.66m Rt. Elev. 403.181

BM #26-Chis. "u" center east end ditch inlet in Kellogg median,
73m ± west of Seville. Sta. 16+350.729, 25.78m Rt. Elev. 401.820

Sta. 16+011.650 Construct
Br. No. 54-87-19.30(493) E.B.
5 @ 21 000 Continuous
Prestressed Beam Spans
17 100 Roadway

RECORD DRAWING

No.	Revisions	By	Date
1	CITY OF WICHITA		
2	BR. NO. 54-87-19.30 (493) E.B.		STA. 16+011.650
3	BR. NO. 54-87-19.31 (494) W.B.		STA. 16+011.650
4	BR. NO. 54-87-19.29 (492) F.E.B.		STA. 16+005.740
5	BR. NO. 54-87-19.32 (495) F.W.B.		STA. 16+016.230

CONTOUR MAP
KELLOGG (US-54) / COWSKIN CREEK
SEDGWICK COUNTY

Professional Engineering Consultants, P.A.
303 S. TOPEKA • WICHITA, KANSAS 67202
316-262-2691 • FAX 316-262-3003

Designed by	RAS	Checked by	RAS
Drawn by	JGP	Date	April, 2002
		Job No.	97362

DSNR: RAS OPER: BUS SCALE: 1:500
 1:/1997/97362/As-Built/dgn's/Vol_3/Sh_478-cowconcr.dgn Last Rev: 8-31-07 By: gdr