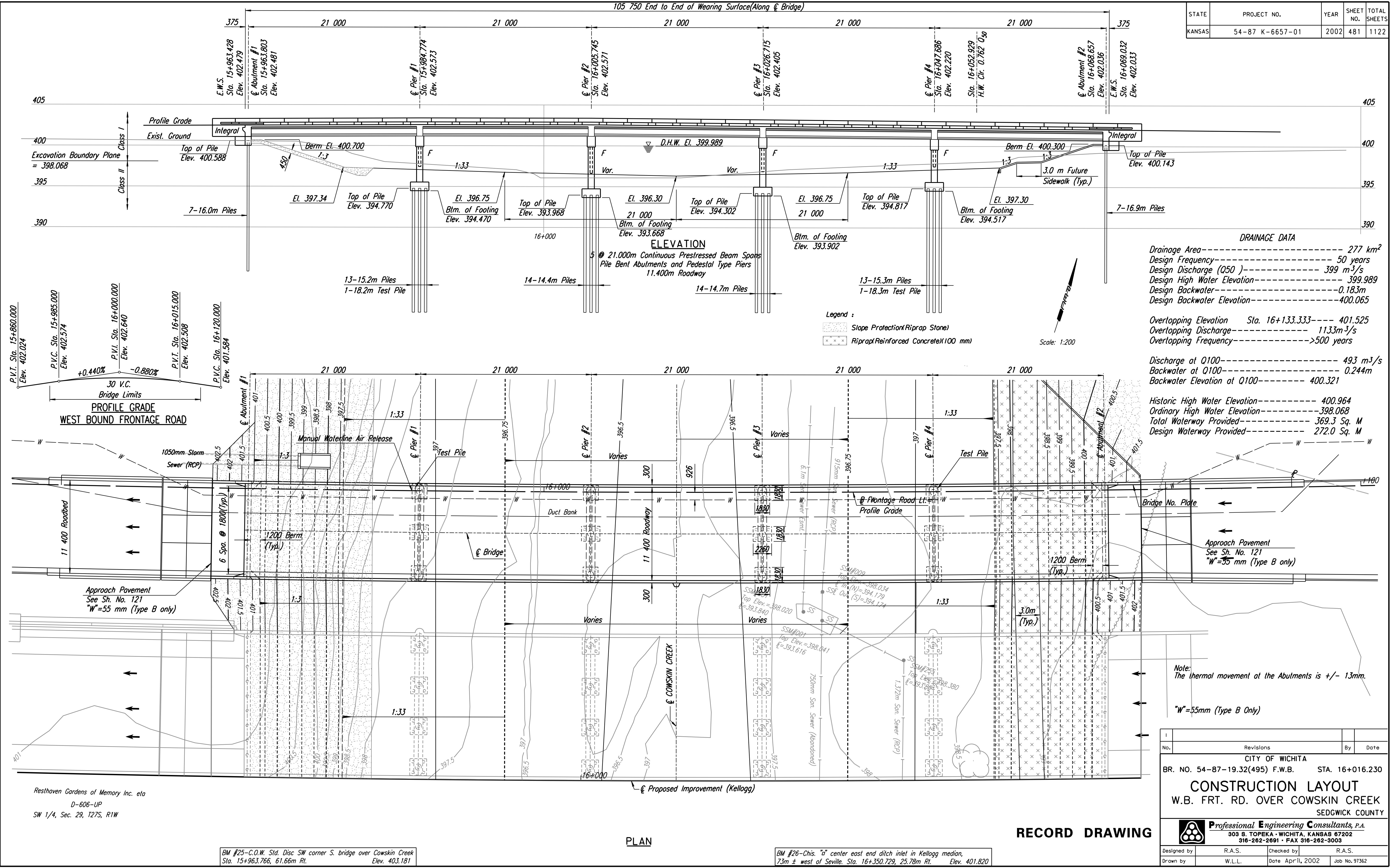


STATE	PROJECT NO.	YEAR	SHEET NO.	TOTAL SHEETS
KANSAS	54-87 K-6657-01	2002	481	1122



**DRAINAGE DATA**

Drainage Area----- 277 km<sup>2</sup>  
 Design Frequency----- 50 years  
 Design Discharge (Q50)----- 399 m<sup>3</sup>/s  
 Design High Water Elevation----- 399.989  
 Design Backwater----- 0.183m  
 Design Backwater Elevation----- 400.065

Overtopping Elevation Sta. 16+133.333----- 401.525  
 Overtopping Discharge----- 1133m<sup>3</sup>/s  
 Overtopping Frequency----- >500 years

Discharge at Q100----- 493 m<sup>3</sup>/s  
 Backwater at Q100----- 0.244m  
 Backwater Elevation at Q100----- 400.321

Historic High Water Elevation----- 400.964  
 Ordinary High Water Elevation----- 398.068  
 Total Waterway Provided----- 369.3 Sq. M  
 Design Waterway Provided----- 272.0 Sq. M

Note:  
The thermal movement at the Abutments is +/- 13mm.

"W"=55mm (Type B Only)

No.		Revisions	By	Date
CITY OF WICHITA				
BR. NO. 54-87-19.32(495) F.W.B.		STA. 16+016.230		
<b>CONSTRUCTION LAYOUT</b>				
W.B. FRT. RD. OVER COWSKIN CREEK				
SEDGWICK COUNTY				
<b>Professional Engineering Consultants, P.A.</b>				
303 S. TOPEKA • WICHITA, KANSAS 67202				
316-262-2691 • FAX 316-262-3003				
Designed by	R.A.S.	Checked by	R.A.S.	
Drawn by	W.L.L.	Date	Apr 11, 2002 Job No. 97362	

DSWR: RAS OPER: BUS SCALE: 1:200  
 i:/1997/97362/As-Builts/dgn s/VoL\_3/Sh 481-LAYOUT.dgn Last Rev: 8-31-07 By: gdr

Resthaven Gardens of Memory Inc. eto  
 D-606-UP  
 SW 1/4, Sec. 29, T27S, R1W

BM #25-C.O.W. Std. Disc SW corner S. bridge over Cowskin Creek  
 Sta. 15+963.766, 61.66m Rt. Elev. 403.181

BM #26-Chis. "u" center east end ditch inlet in Kellogg median,  
 73m ± west of Seville. Sta. 16+350.729, 25.78m Rt. Elev. 401.820

PLAN

RECORD DRAWING