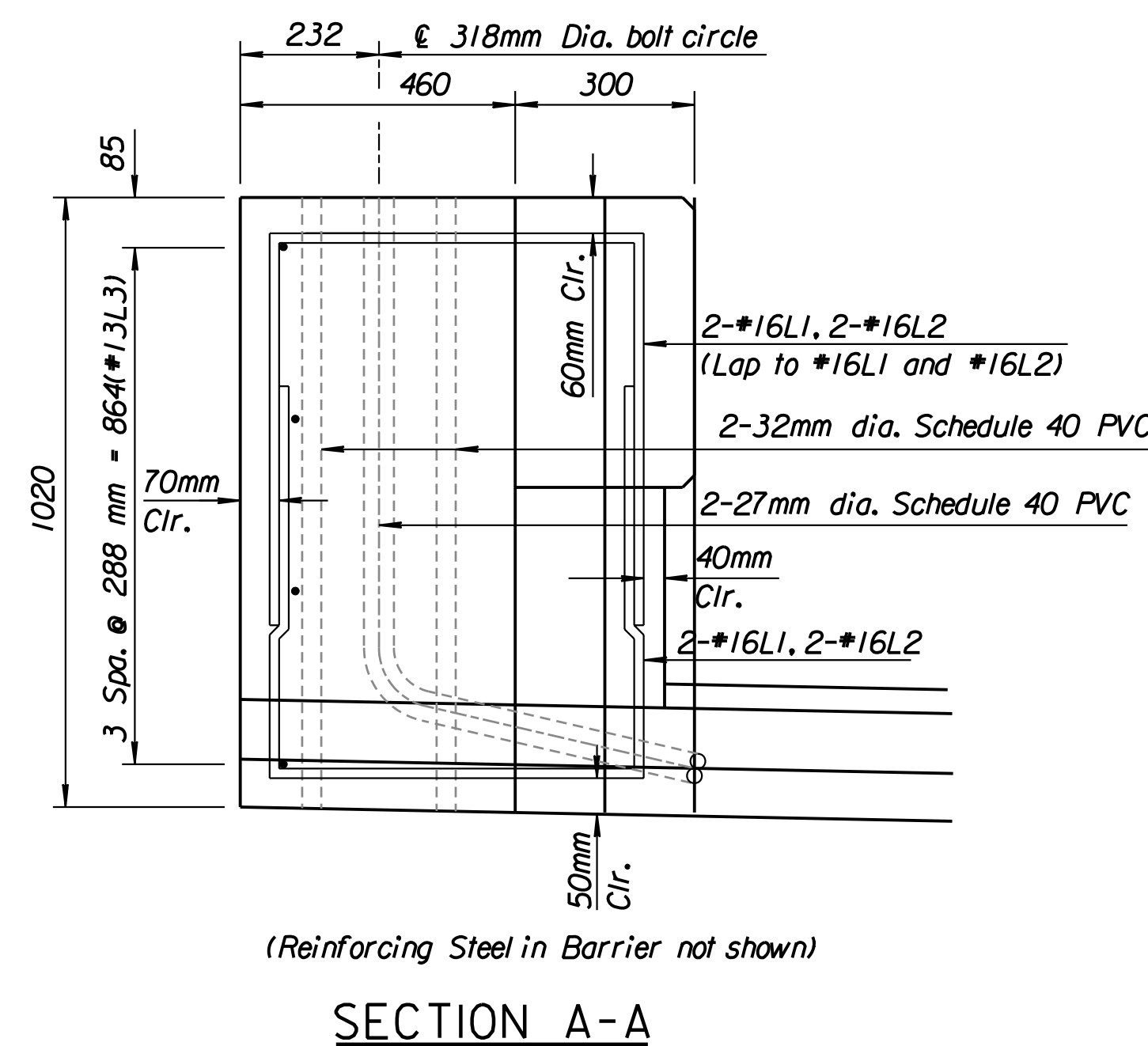
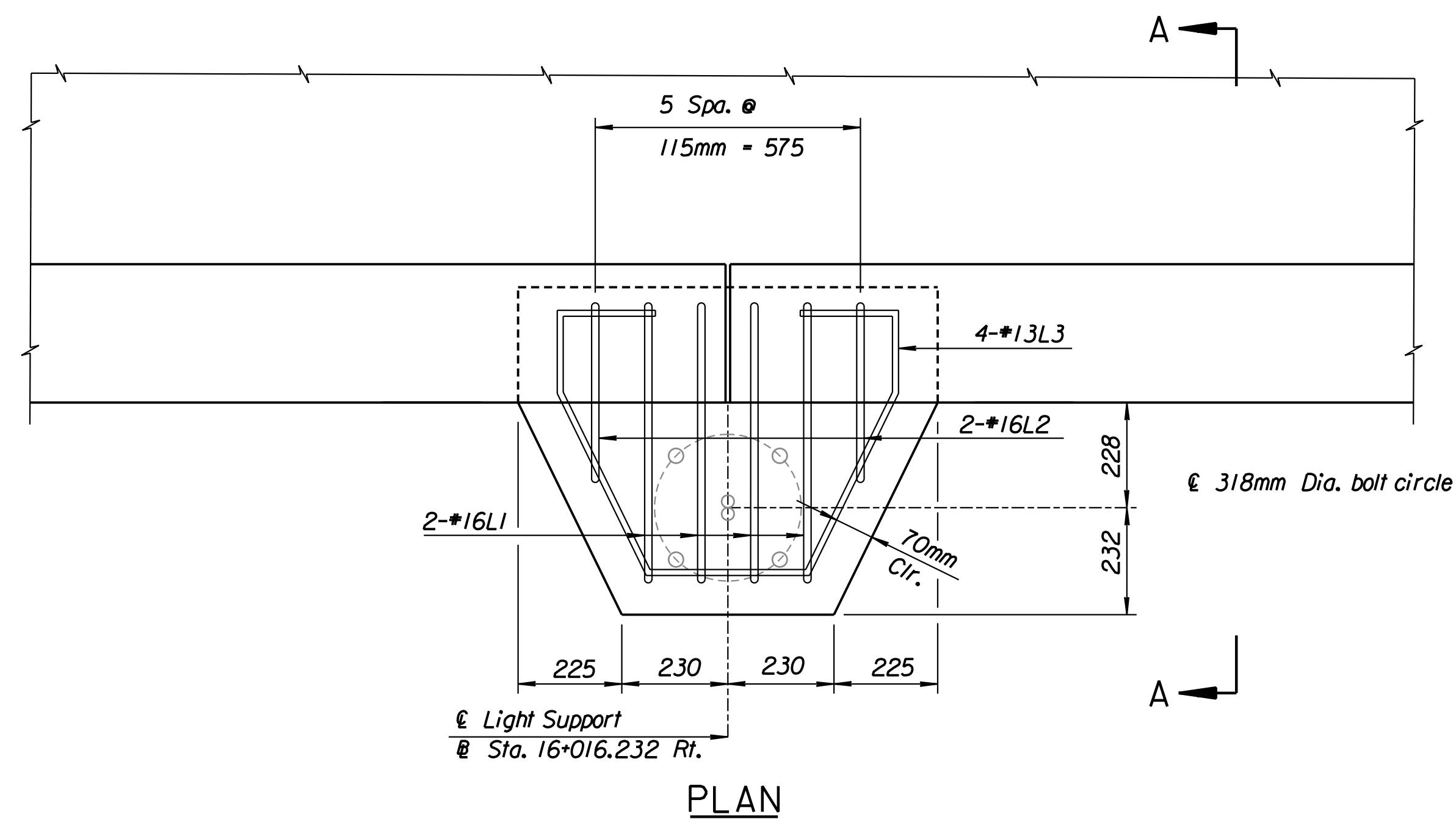


STATE	PROJECT NO.	YEAR	SHEET NO.	TOTAL SHEETS
KANSAS	54-87 K-6657-01	2002	497	1122



NOTE:
25 mm Dia.-900 mm x 100 mm Anchor Bolts approved for all bridges. See Anchor Bolt Detail on Sheet No. 651.

Note: 1-27mm dia. PVC for conductor use
1-27mm dia. PVC for ground use
See Lighting Details for location.
(Sheet No. 638).

Drawn by: ras
 Plotted by: gdr
 It: 1997.09.30 3:52 / As-Built: dgn/s/Vol...3/Sh 497-LIGHT FWB.dgn Last Rev: 9-4-07 By: gdr

RECORD DRAWING

1			
No.	Revisions	By	Date
CITY OF WICHITA BR. NO. 54-87-19.32 (495) F.W.B. STA. 16+016.230			
MISCELLANEOUS RAIL DETAIL KELLOGG (US-54) OVER COWSKIN CREEK SEDGWICK COUNTY			
Professional Engineering Consultants, P.A. 303 S. TOPEKA • WICHITA, KANSAS 67202 316-262-2691 • FAX 316-262-3003			
Designed by	RAS	Checked by	RAS
Drawn by	BJS	Date	April, 2002
		Job No.	97362