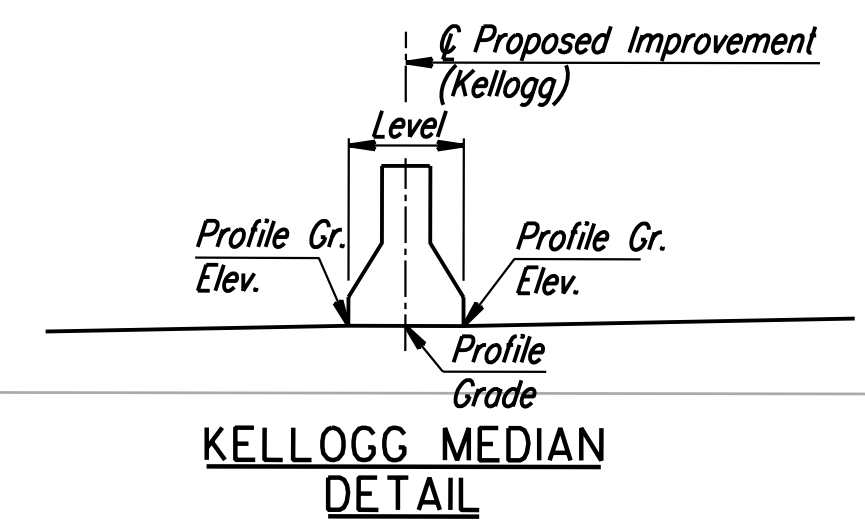
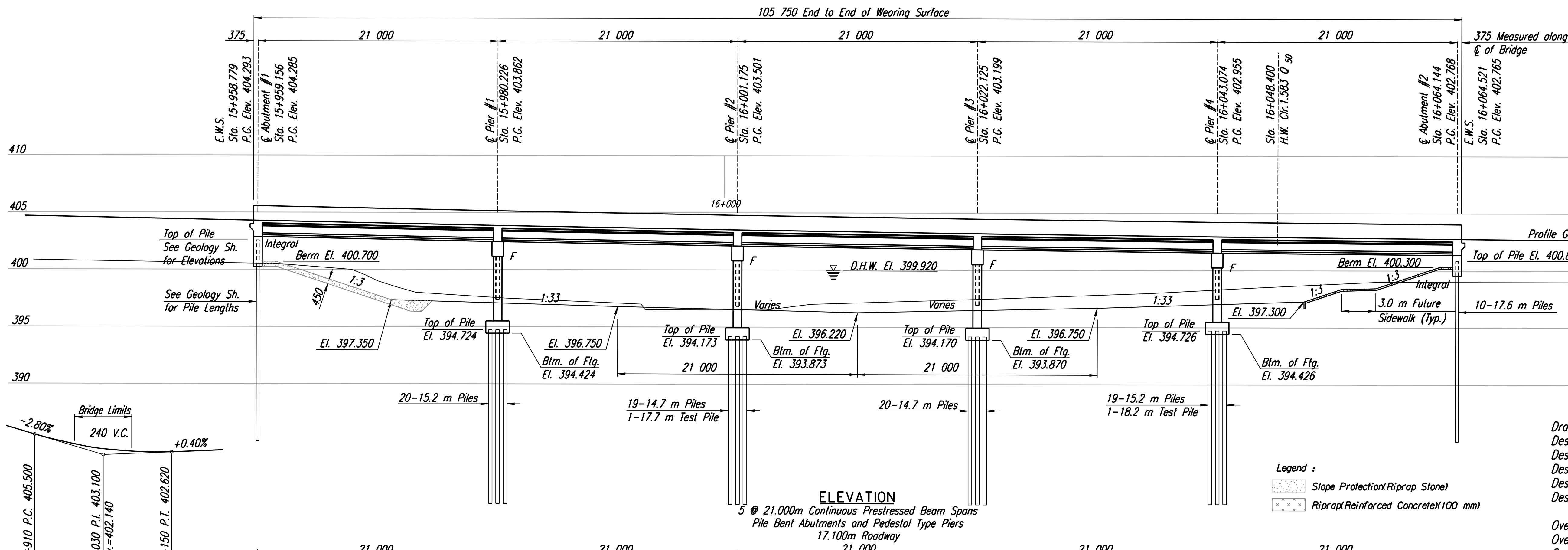


STATE	PROJECT NO.	YEAR	SHEET NO.	TOTAL SHEETS
KANSAS	54-87 K-6657-01	2002	502	1122

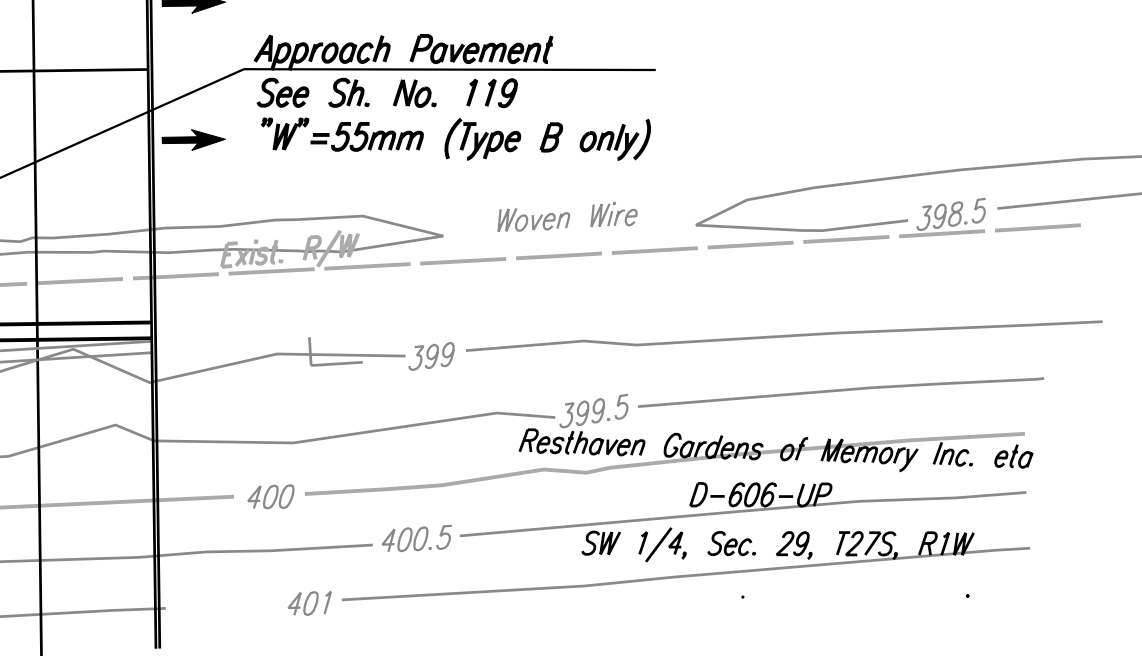


DRAINAGE DATA

Drainage Area	277km ²
Design Frequency	50 years
Design Discharge (Q50)	399 m ³ /s
Design High Water Elevation	399.920
Design Backwater	0.183m
Design Backwater Elevation	400.065

Overtopping Elevation	Sta. 16+120.000	402.560
Overtopping Discharge		1330 m ³ /s
Overtopping Frequency		>500 years
Discharge at Q100		493 m ³ /s
Backwater at Q100		0.244m
Backwater Elevation at Q100		400.321
Historic High Water Elevation		400.964
Ordinary High Water Elevation		398.068
Total Waterway Provided		467.9 Sq. M
Design Waterway Provided		271.7 Sq. M

Note: The thermal movement at the Abutments is +/- 13mm.



No.	Revisions	By	Date
CITY OF WICHITA BR. NO. 54-87-19.30 (493) E.B. STA. 16+011.650			
CONSTRUCTION LAYOUT			
EAST BOUND KELLOGG (US-54)			
OVER COWSKIN CREEK			
SEDGWICK COUNTY			
Professional Engineering Consultants, P.A.			
303 S. TOPEKA • WICHITA, KANSAS 67202 316-262-2691 • FAX 316-262-3003			
Designed by	RAS	Checked by	RAS
Drawn by	WLL/BJ/S	Date	April, 2002
		Job No.	97362

Drawn by: wll/bjs
 Plotted by: gdr
 1/1997 57 362 / As-Built / dgm/s/Vol. 3 / Sh. 502COWLANVEB.dgn Last Rev: 9-4-07 By: gdr

BM #25-C.O.W. Std. Disc SW corner S. bridge over Cowskin Creek
 Sta. 15+963.766, 61.66m RL. Elev. 403.181

BM #26-Chis. "a" center east end ditch inlet in Kellogg median,
 73m ± west of Seville. Sta. 16+350.729, 25.78m RL. Elev. 401.820

RECORD DRAWING