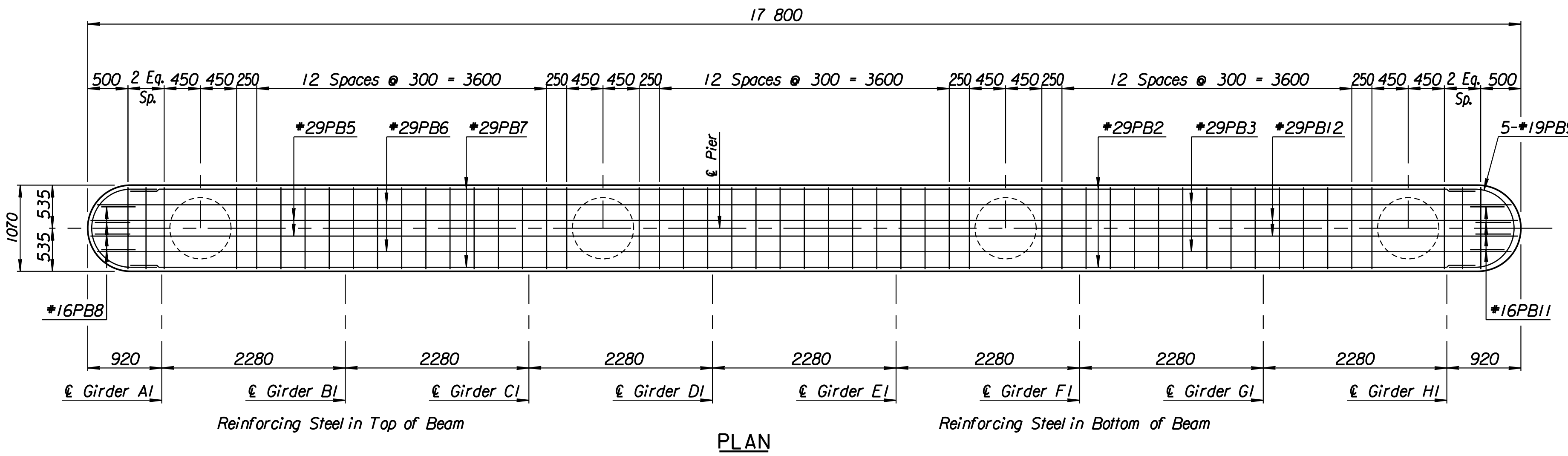
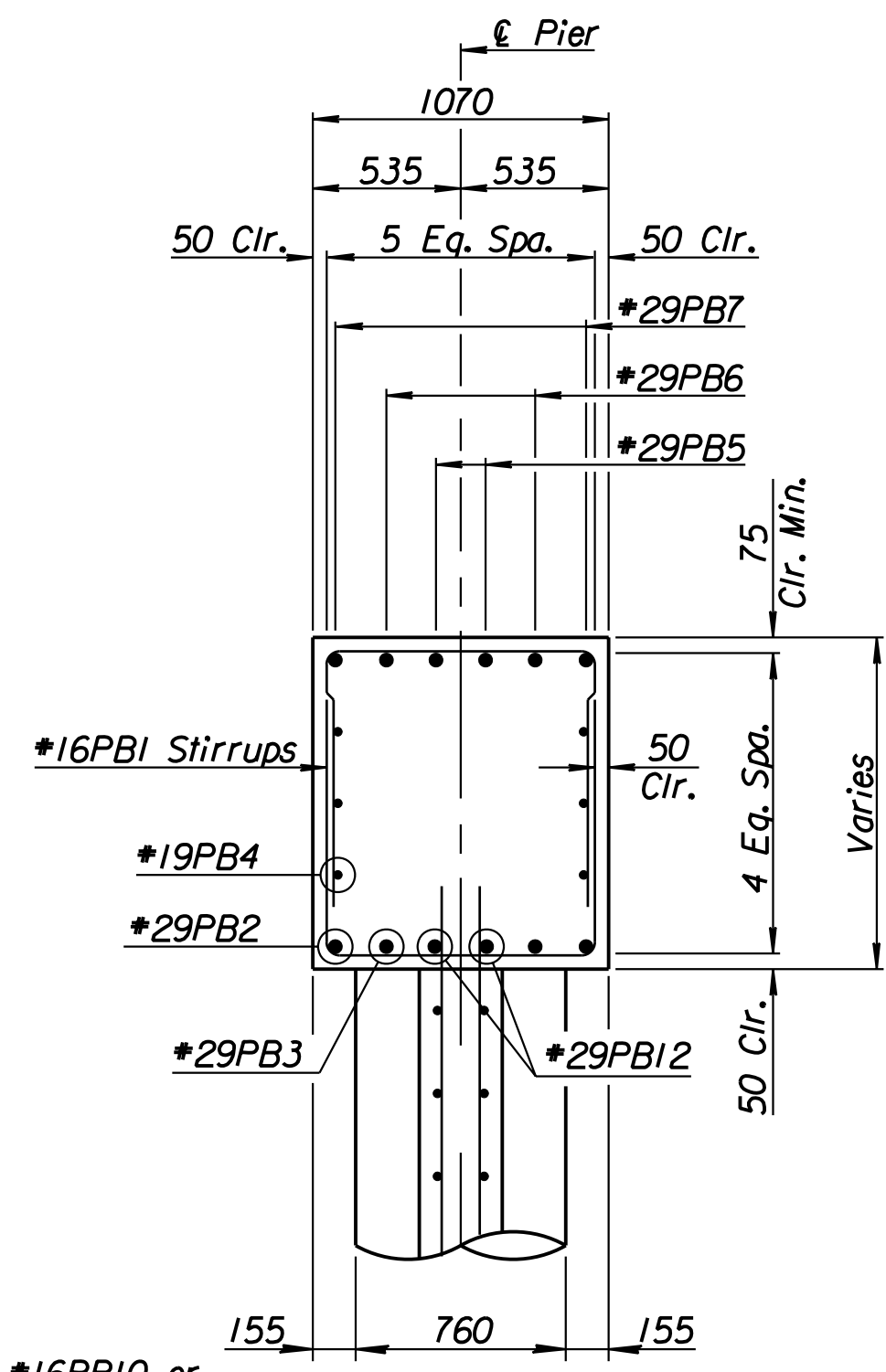


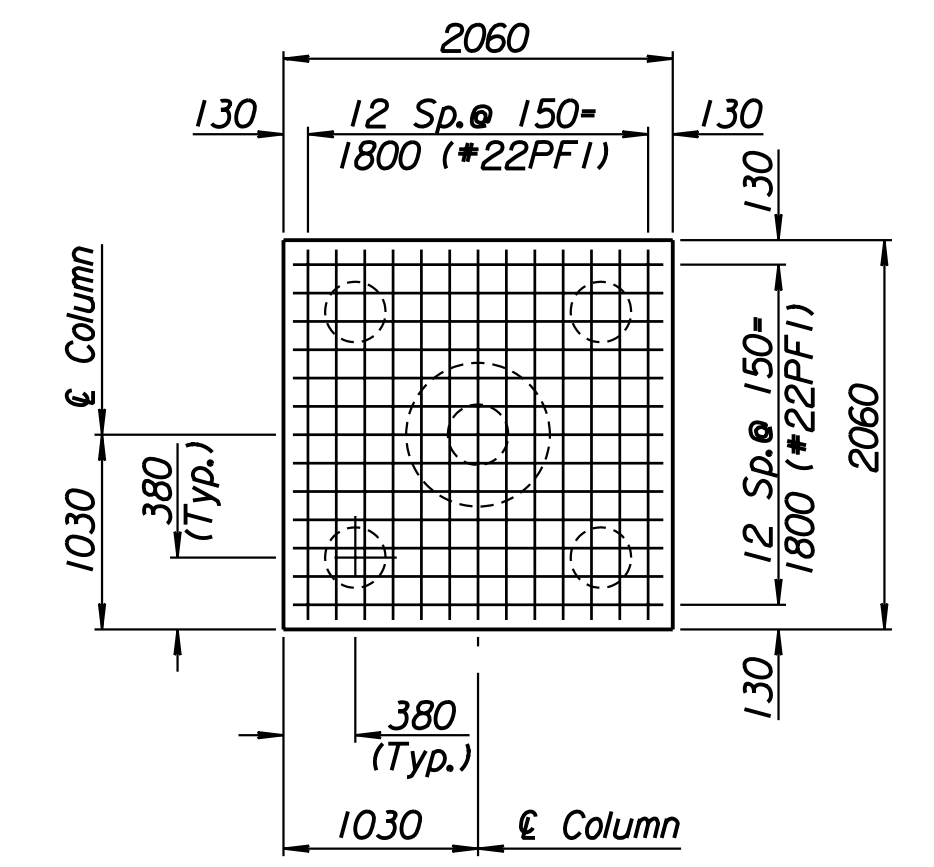
STATE	PROJECT NO.	YEAR	SHEET NO.	TOTAL SHEETS
KANSAS	54-87 K-6657-01	2002	515	1122



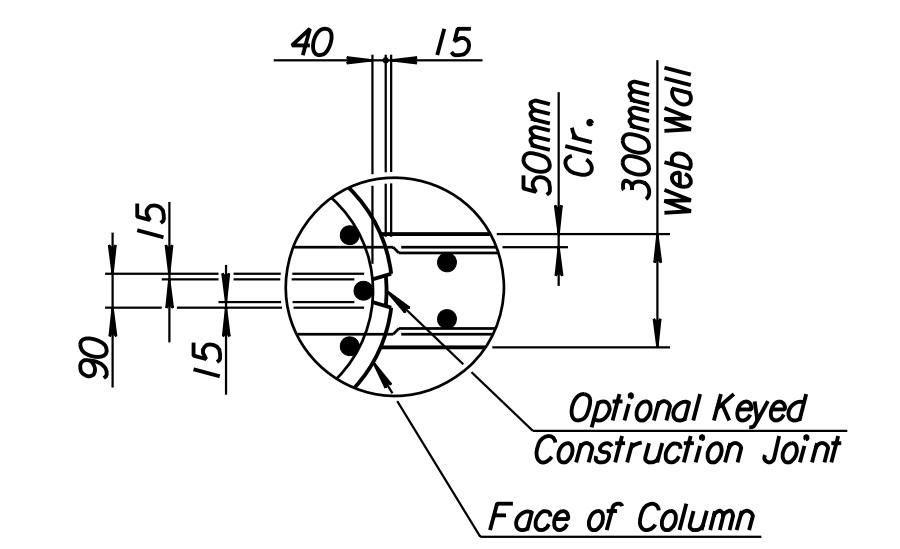
PLAN



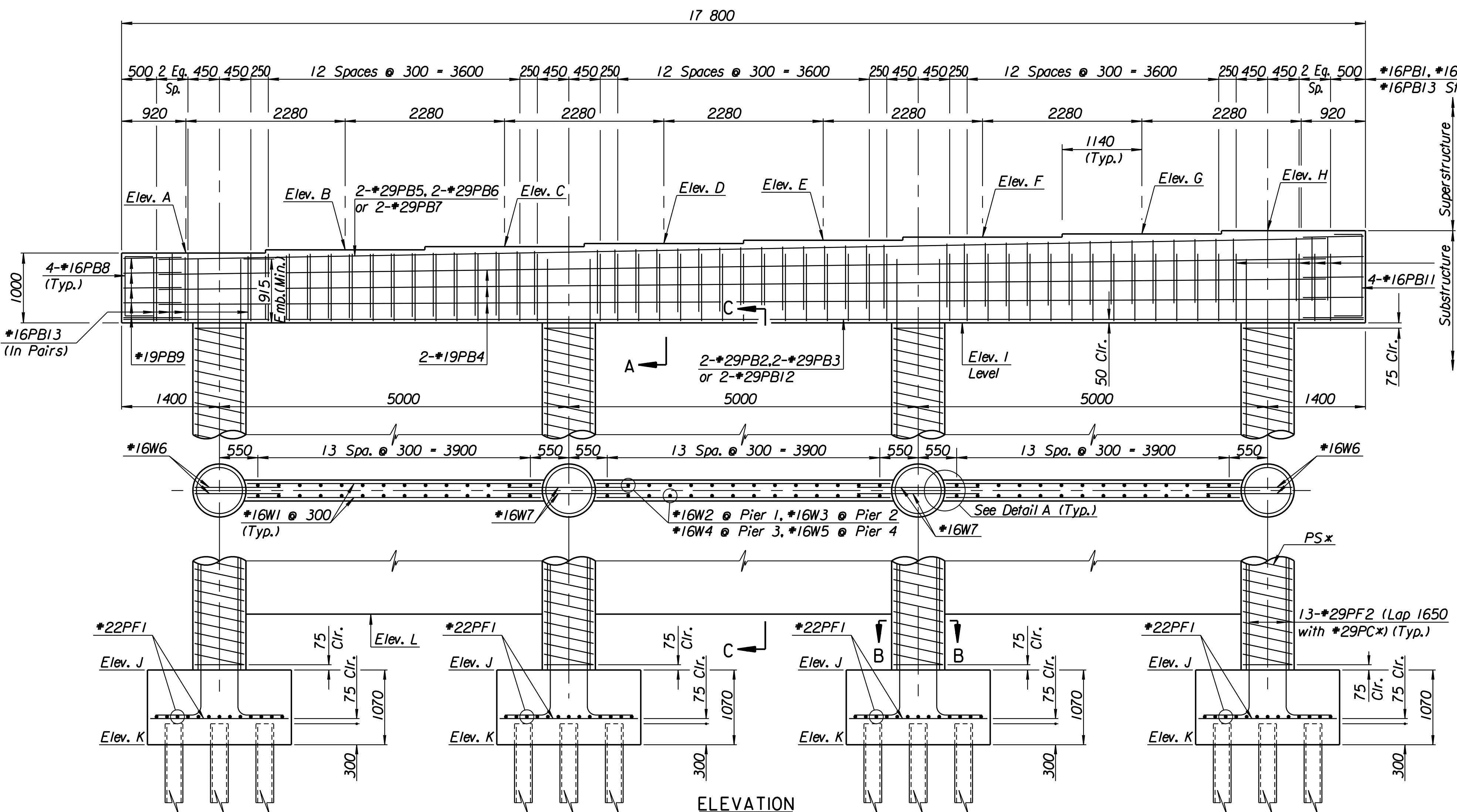
SECTION A-A



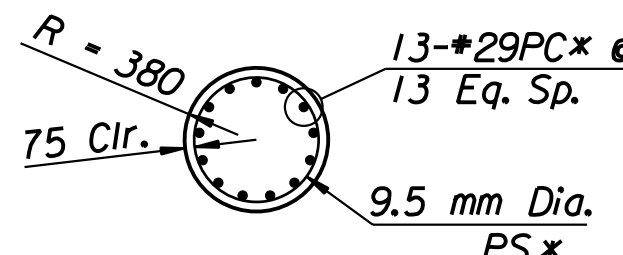
FOOTING PLAN



DETAIL A

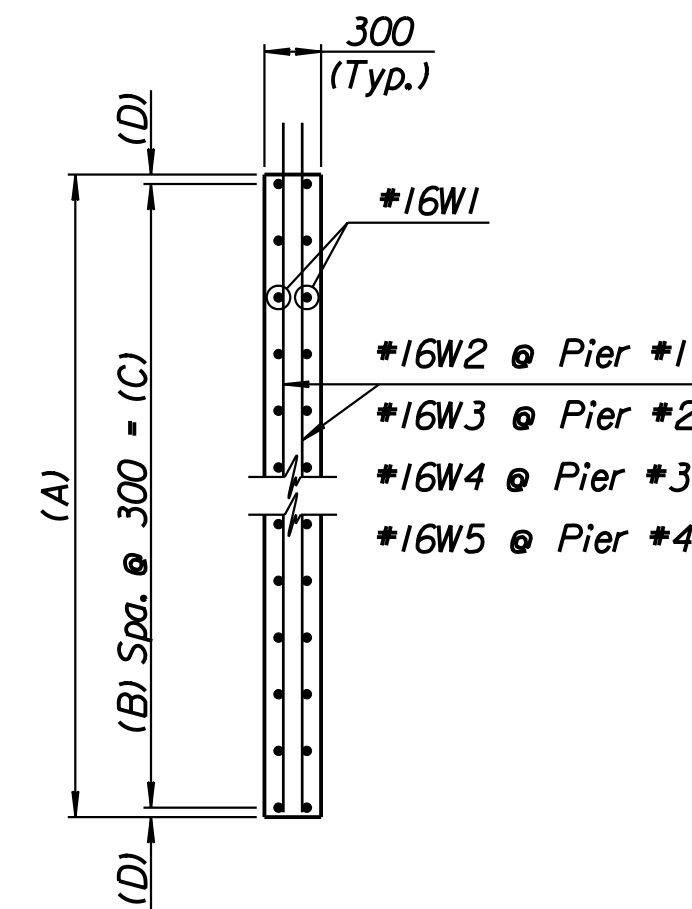


ELEVATION



SECTION B-B

(Web Wall not Shown - See Elevation)



SECTION C-C

TABLE OF ELEVATIONS - 19.31 (6II) (W.B.)

Location	Elev. A	Elev. B	Elev. C	Elev. D	Elev. E	Elev. F	Elev. G	Elev. H	Elev. I	Elev. J	Elev. K	Elev. L
Pier #1	402.094	402.140	402.186	402.231	402.277	402.322	402.368	402.414	401.094	395.404	394.334	397.294
Pier #2	401.731	401.777	401.822	401.868	401.914	401.959	402.005	402.050	400.731	394.841	393.771	396.731
Pier #3	401.427	401.473	401.518	401.564	401.609	401.655	401.701	401.746	400.427	394.837	393.767	396.727
Pier #4	401.182	401.228	401.273	401.319	401.364	401.410	401.456	401.501	400.182	395.392	394.322	397.282

Note: Either cast the columns and pier web monolithically or cast the columns separately using keyed joint as shown in Detail A. If the columns are cast separately, use threaded deformed bars in lieu of W6 & W7 dowel bars. Bar diameter and embedment length into the web wall shall be as designated. The inserts shall develop the full yield strength of the bars. No change in compensation is allowed with the use of inserts. Coil inserts are not allowed.

COLUMN REINFORCING

Location	PSx	PCx
Pier #1	PS1	PC1
Pier #2	PS2	PC2
Pier #3	PS3	PC3
Pier #4	PS4	PC4

Pier Pile Loading (kN)

	Computed	Allowable
Group I Loading	429	440
Group III Loading	550	550
Group IV Loading	549	550
Group V Loading	561	616

Note: See Diaphragm Detail Sheet for Number and Location of *19PB14 bars.

WEB WALL INFORMATION

Location	A	B	C	D
Pier #1	3800	12	3600	100
Pier #2	4000	13	3900	50
Pier #3	3700	12	3600	50
Pier #4	2900	9	2700	100

RECORD DRAWING

CITY OF WICHITA			
BR. NO. 54-87-19.31(494)(W.B.)		STA. 16+011.650	
PIER DETAILS			
WEST KELLOGG (US-54)			
OVER COWSKIN CREEK			
SEDGWICK COUNTY			
Professional Engineering Consultants, P.A.			
303 S. TOPEKA - WICHITA, KANSAS 67202			
316-262-2691 • FAX 316-262-3003			
Designed by	R.W.A.	Checked by	R.A.S.
Drawn by	D.R.P.	Date	April 11, 2002
		Job No.	97362

DSNR: RWA OPER: DRP SCALE: 40
 i:/1997/97362/As-Built/dgn's/Vol_3/Sh 515-pierdetail.dgn Last Rev: 9-4-07 By: gdr