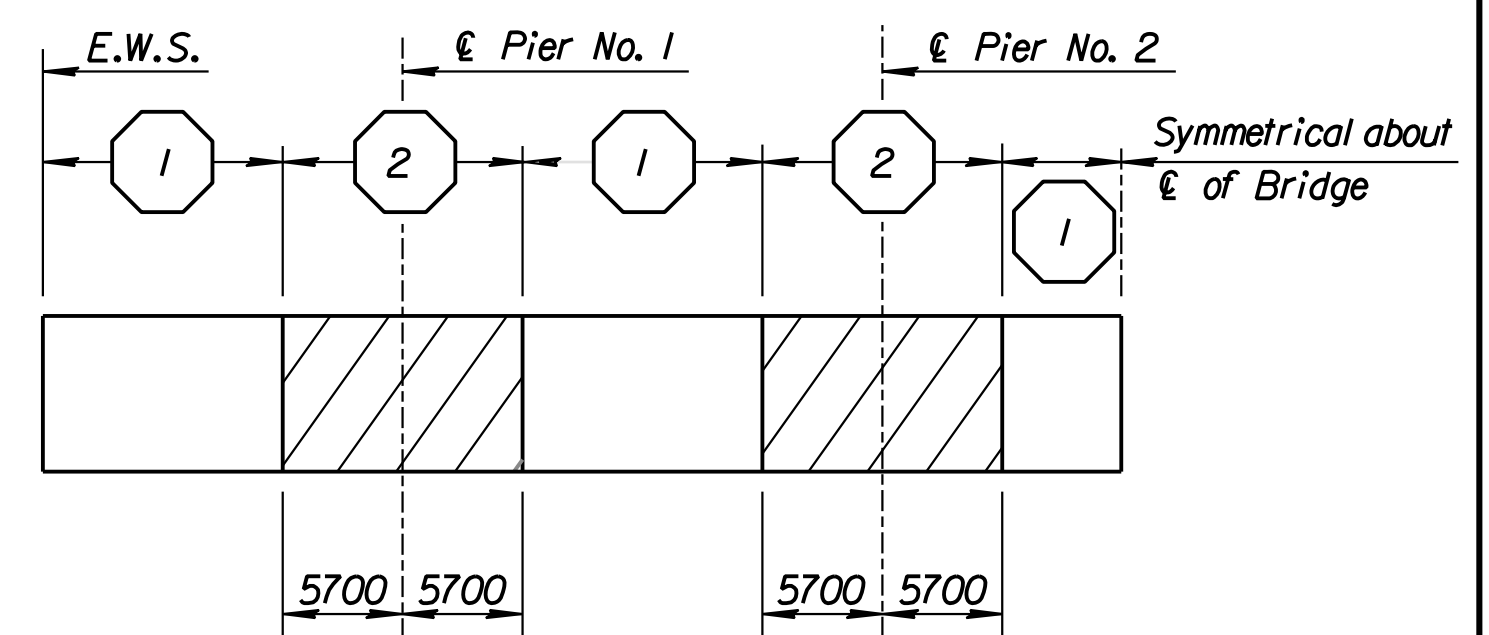
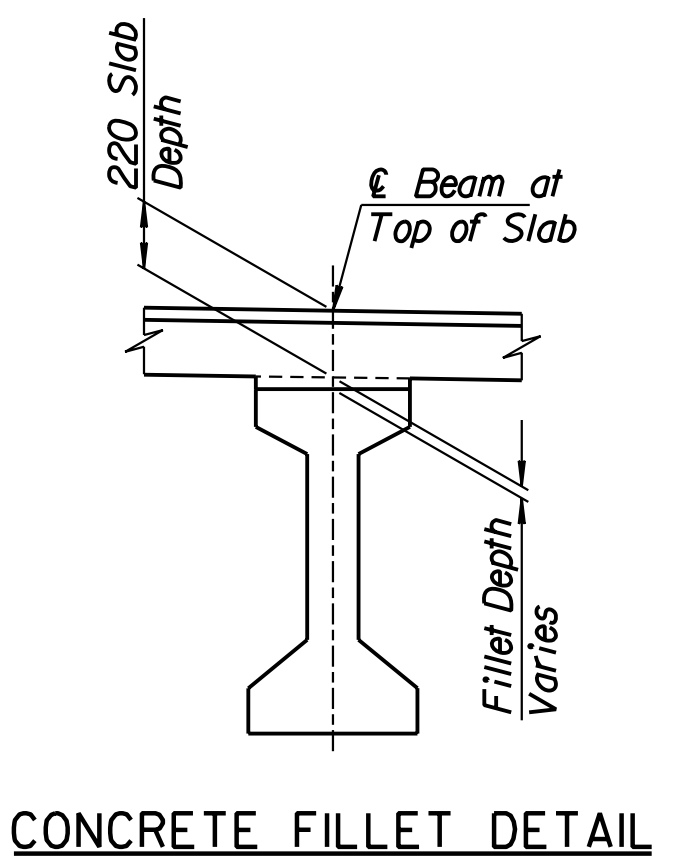
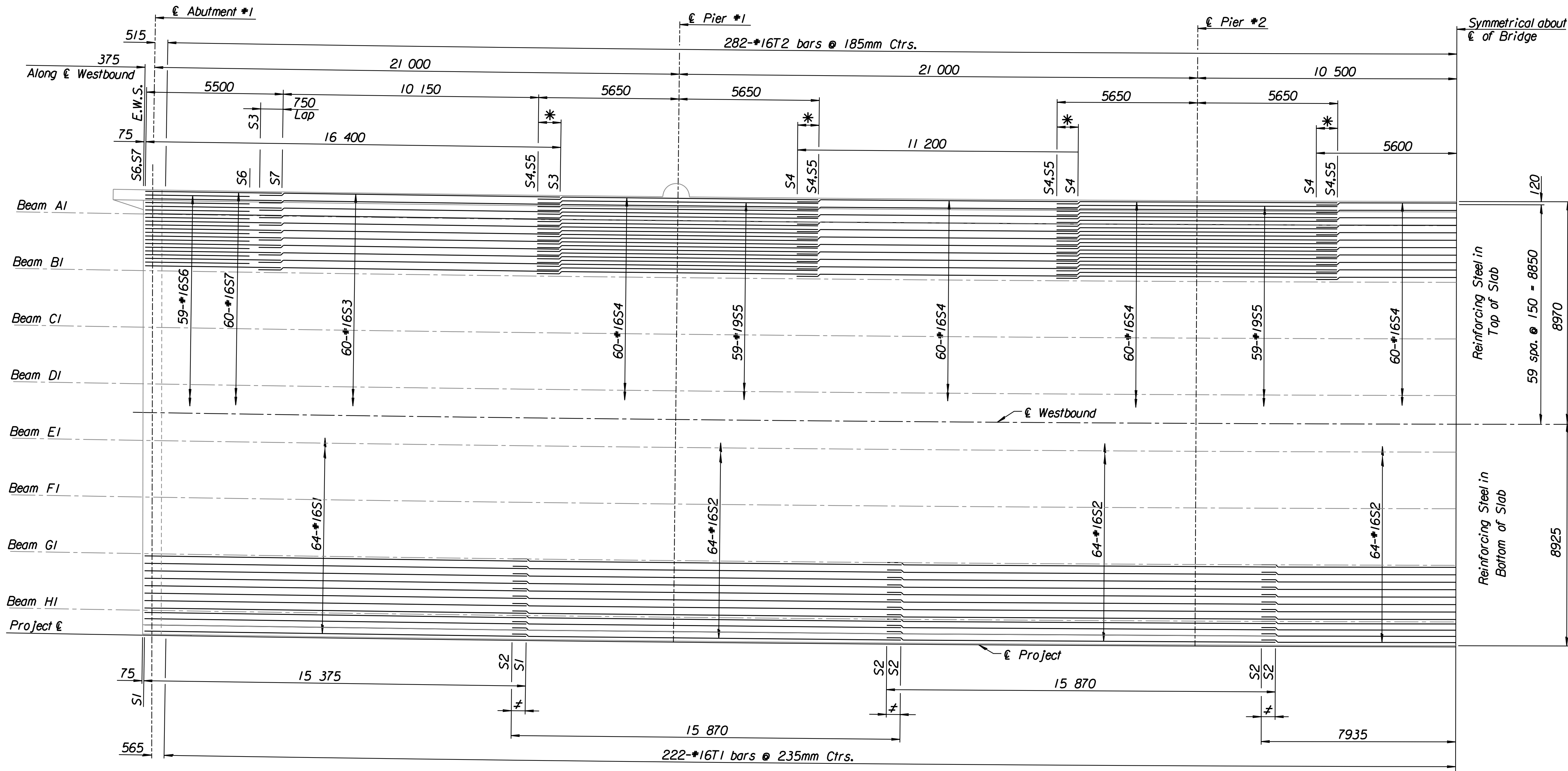
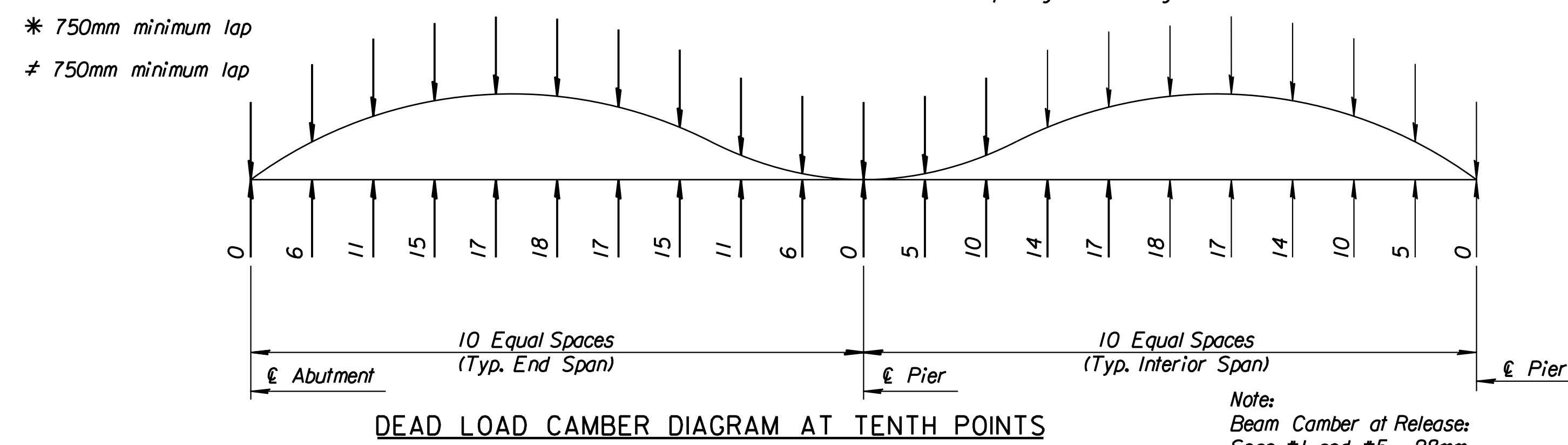


STATE	PROJECT NO.	YEAR	SHEET NO.	TOTAL SHEETS
KANSAS	54-87 K-6657-01	2002	522	1122



HALF PLAN
See Section for Spacing on Framing Plan Sheet.



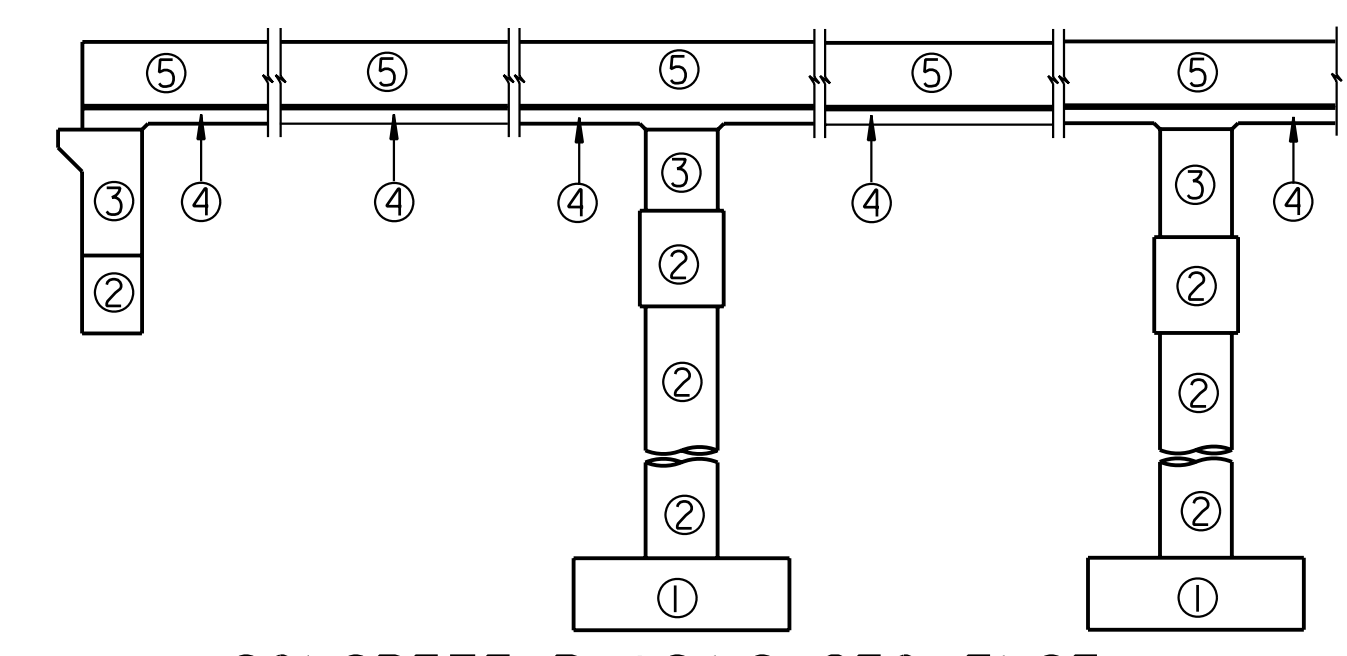
* 750mm minimum lap
750mm minimum lap

Note:
Beam Camber at Release:
Span #1 and #5 28mm
Span #2, #3 and #4 25mm

Beam Camber at 50 days
Span #1 and #5 49mm
Span #2, #3 and #4 44mm

Note:
Dead Load Deflections are downward.

CAMBER: Construct the finished deck to plan grade by varying the depth of the fillet over the beam to provide for prestress camber, concrete dead load deflection and, if necessary, vertical curvature. After the prestressed beams are erected measure the camber in the field by taking a profile of each beam. Correct any variation between the actual camber and concrete dead load deflection shown in the plans by varying the depth of the concrete fillets over the beam so that the finished floor is constructed to the theoretical grade. The minimum depth of the slab over the beam shall be 230 mm. The theoretical amount of concrete required for the fillets is 15.3 m³. This amount of concrete is included in the summary of quantities. Any additional concrete required to construct the fillets will be Subsidiary.



- CONCRETE PLACING SEQUENCE**
- 1 Substructure (Footings) - Concrete (Grade 30)(AE).
 - 2 Substructure - Concrete (Grade 30)(AE).
 - 3 Superstructure - Concrete (Grade 30)(AE)(SA), Abutment and Pier Diaphragms above the Bridge Seats shall be placed and hand vibrated to the bottom of deck elevation just prior to the normal Paving Train Operations for, 4, the work shall be accomplished in a manner to avoid cold joints in either the Slab or in the Diaphragms. See Slab Concrete Placing Sequence for placing sequence of the Deck Slab.
 - 5 Superstructure - Concrete (Grade 30)(AE)(SA) Curbs.

Note:
T1 and T2 bars placed parallel to € Abutments and Piers.

RECORD DRAWING

No.		Revisions		By	Date
CITY OF WICHITA BR. NO. 54-87-19.31(494)W.B. STA. 16+011.650 SUPERSTRUCTURE DETAILS WESTBOUND KELLOGG (US-54) OVER COWSKIN CREEK SEDGWICK COUNTY					
Professional Engineering Consultants, P.A. 303 S. TOPEKA • WICHITA, KANSAS 67202 316-262-2691 • FAX 316-262-3003					
Designed by	RAS	Checked by	RAS		
Drawn by	BJS	Date	April, 2002	Job No.	97362

Drawn by: bjs
 Plotted by: gdr
 11/1997 57 362 / as-Bulins/dgn/s/Vol_3/Sh 522-suplaywbdgn Last Rev: 9-4-07 By: gdr